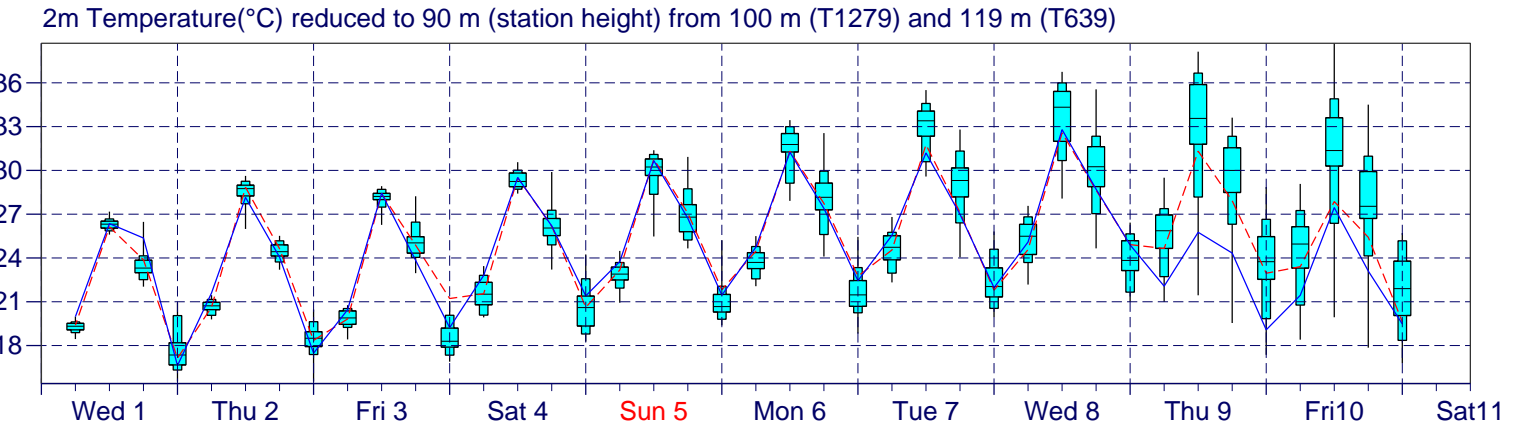
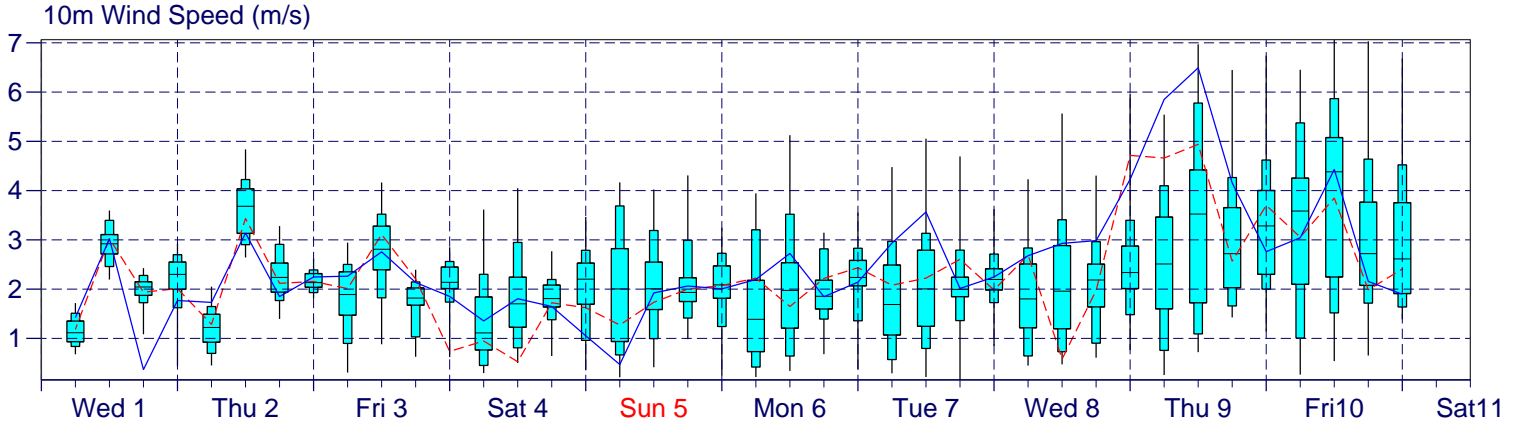
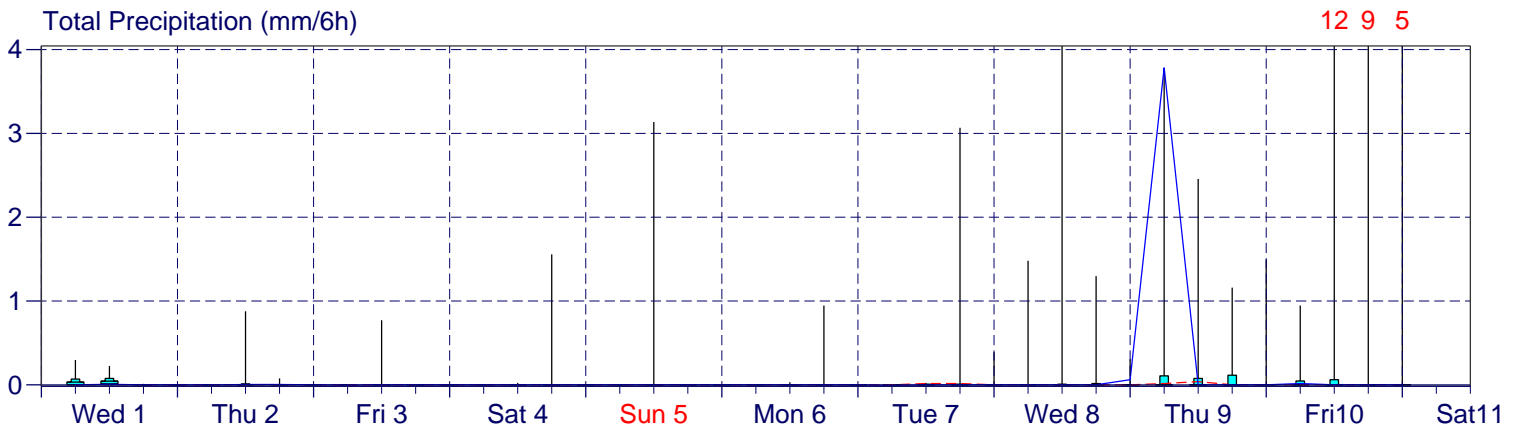
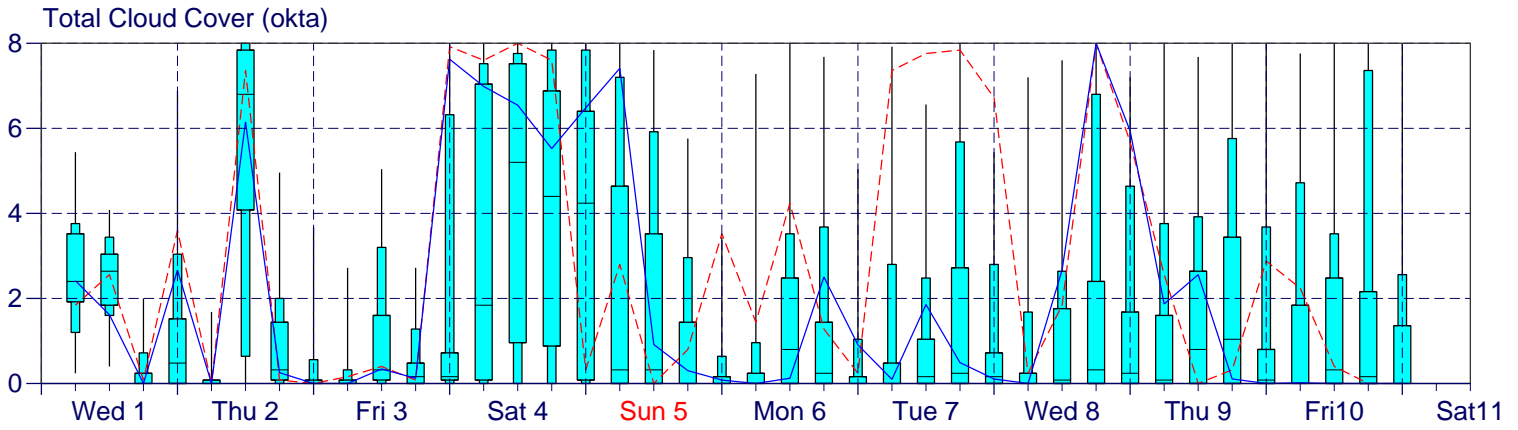


EPS Meteorogram

Belgrade, Serbia 44.82°N 20.63°E (EPS land point) 90 m

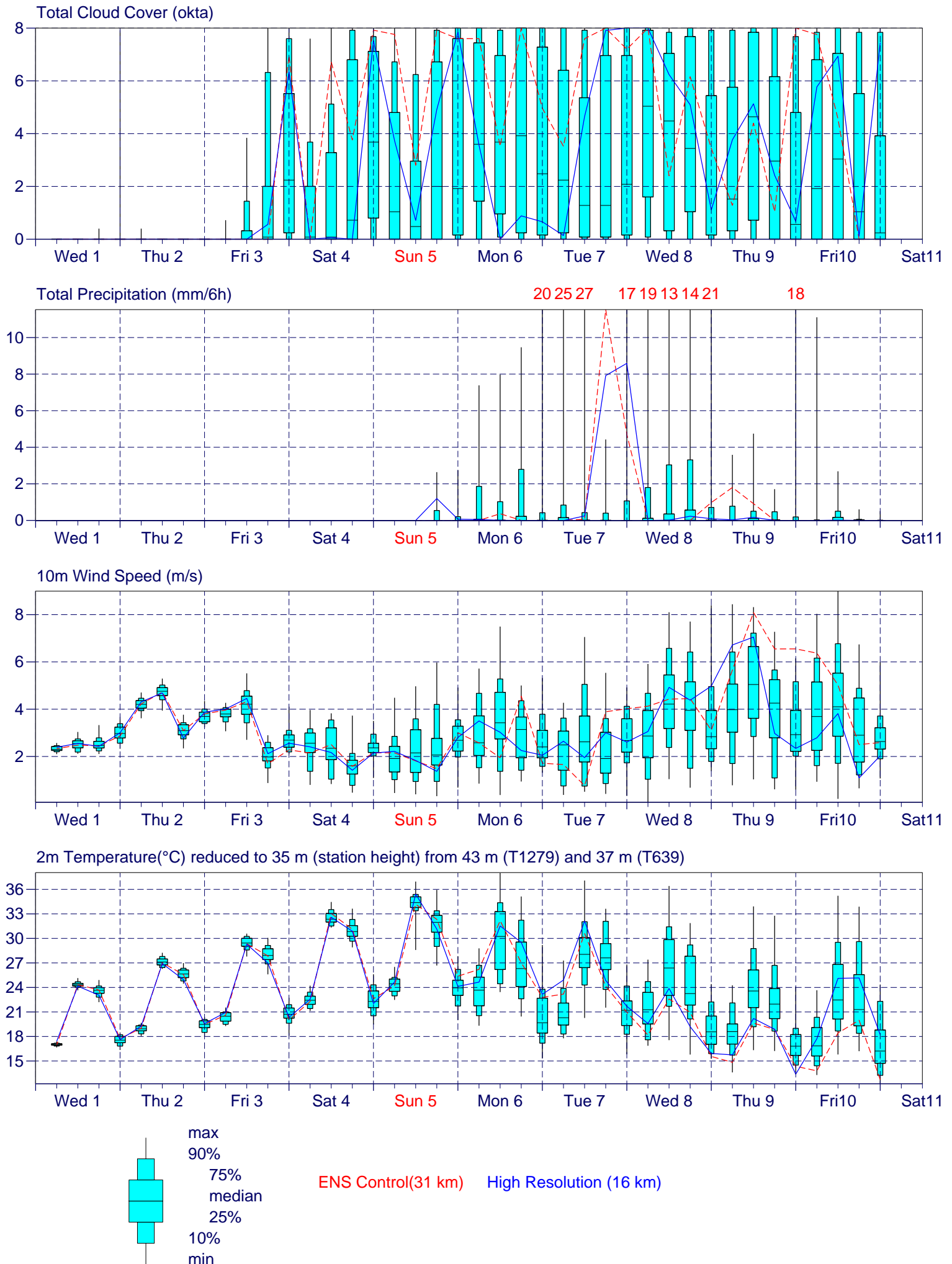
HRES Forecast and ENS Distribution Wednesday 1 July 2015 00 UTC



EPS Meteorogram

Berlin, Germany 52.41°N 13.33°E (EPS land point) 35 m

HRES Forecast and ENS Distribution Wednesday 1 July 2015 00 UTC

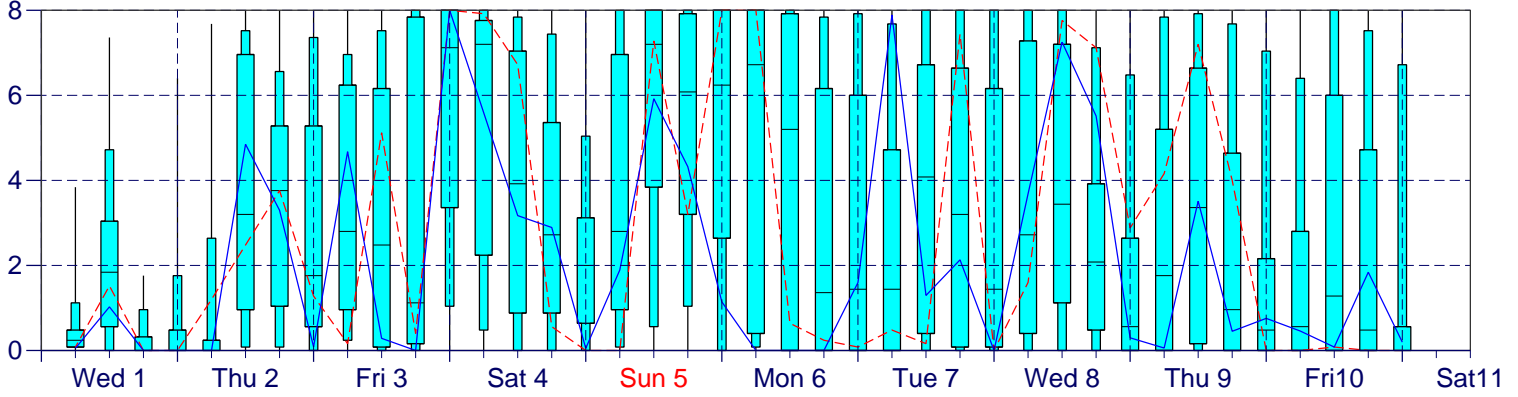


EPS Meteorogram

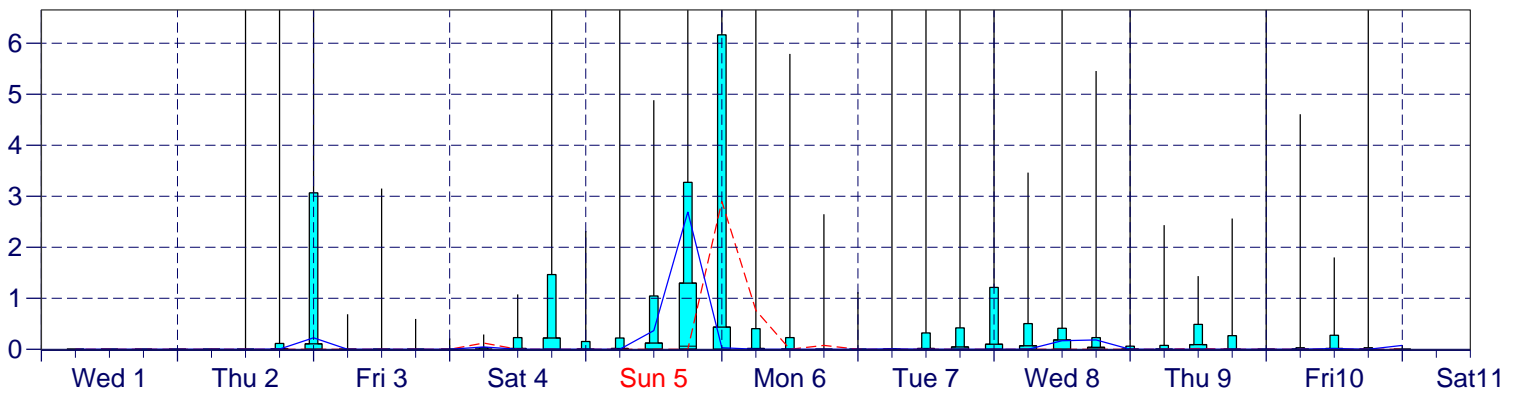
Brussels, Belgium 50.73°N 4.17°E (EPS land point) 48 m

HRES Forecast and ENS Distribution Wednesday 1 July 2015 00 UTC

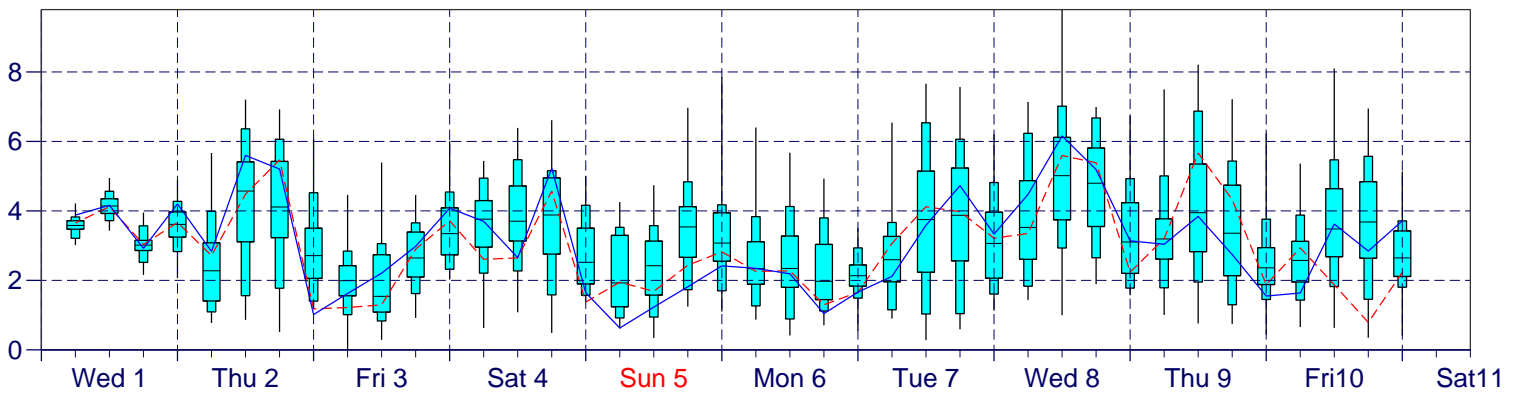
Total Cloud Cover (okta)



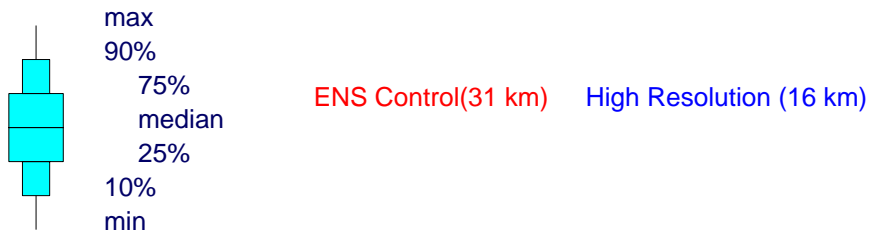
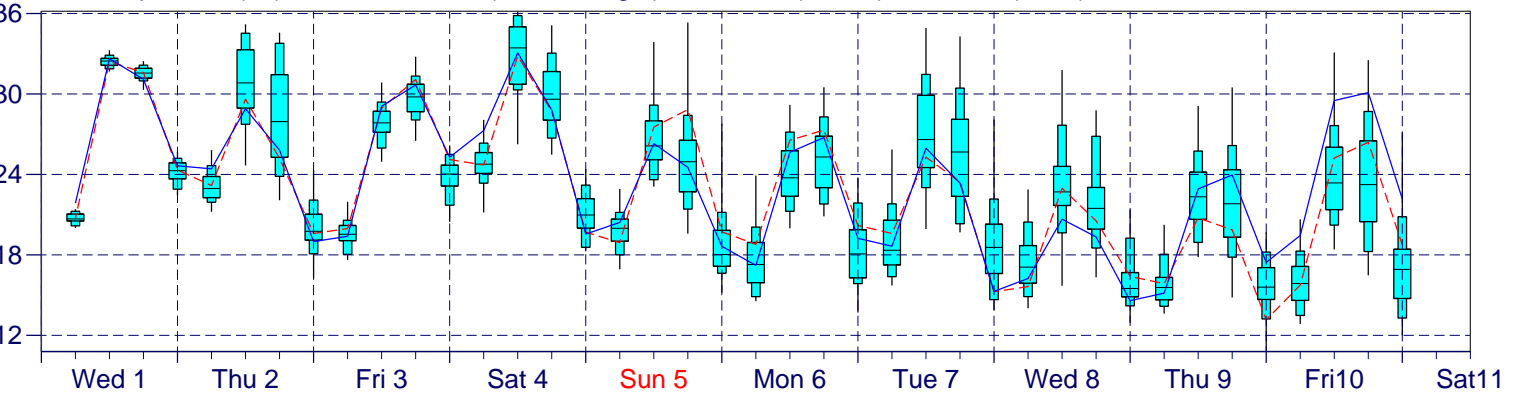
Total Precipitation (mm/6h)



10m Wind Speed (m/s)



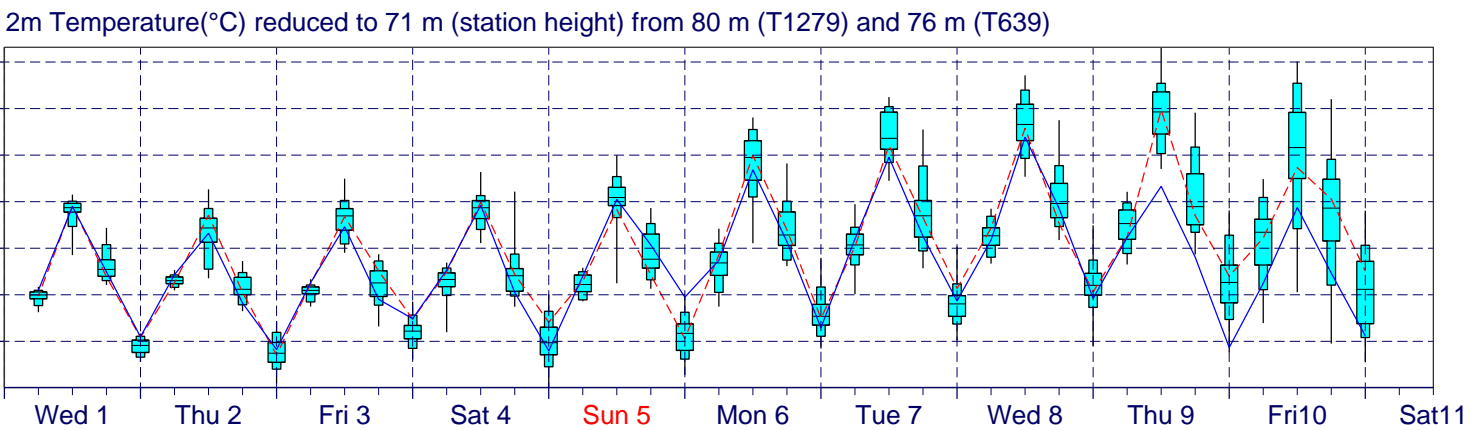
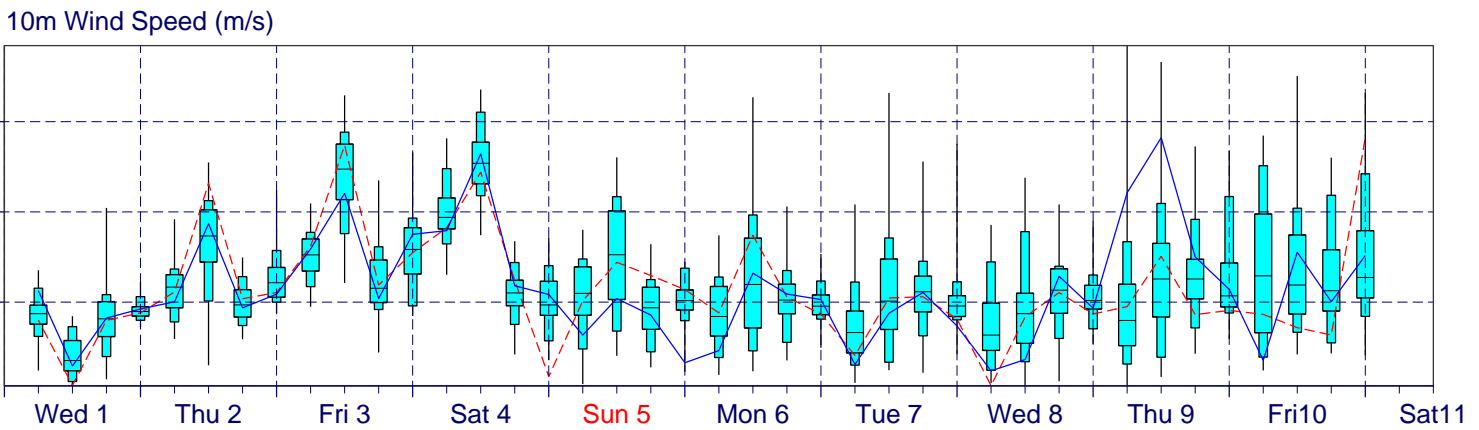
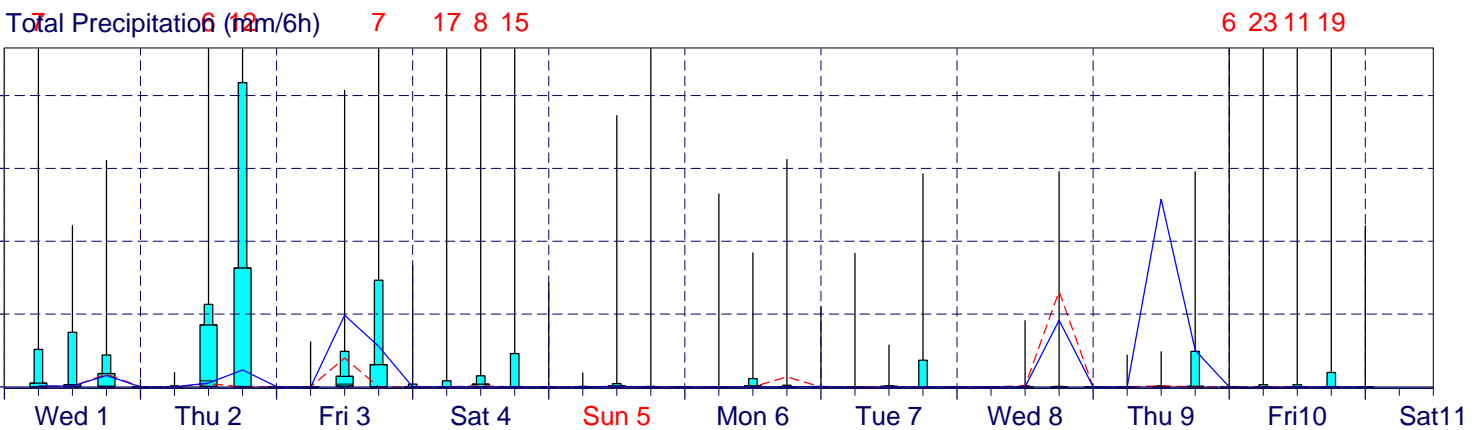
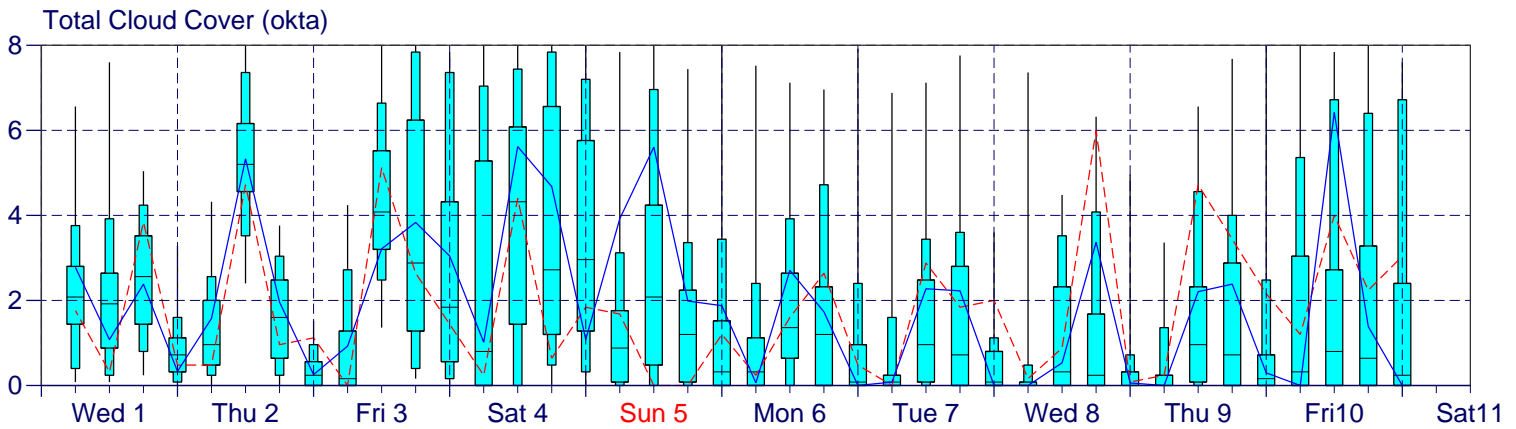
2m Temperature(°C) reduced to 48 m (station height) from 68 m (T1279) and 67 m (T639)



EPS Meteorogram

Bucharest, Romania 44.54°N 26.25°E (EPS land point) 71 m

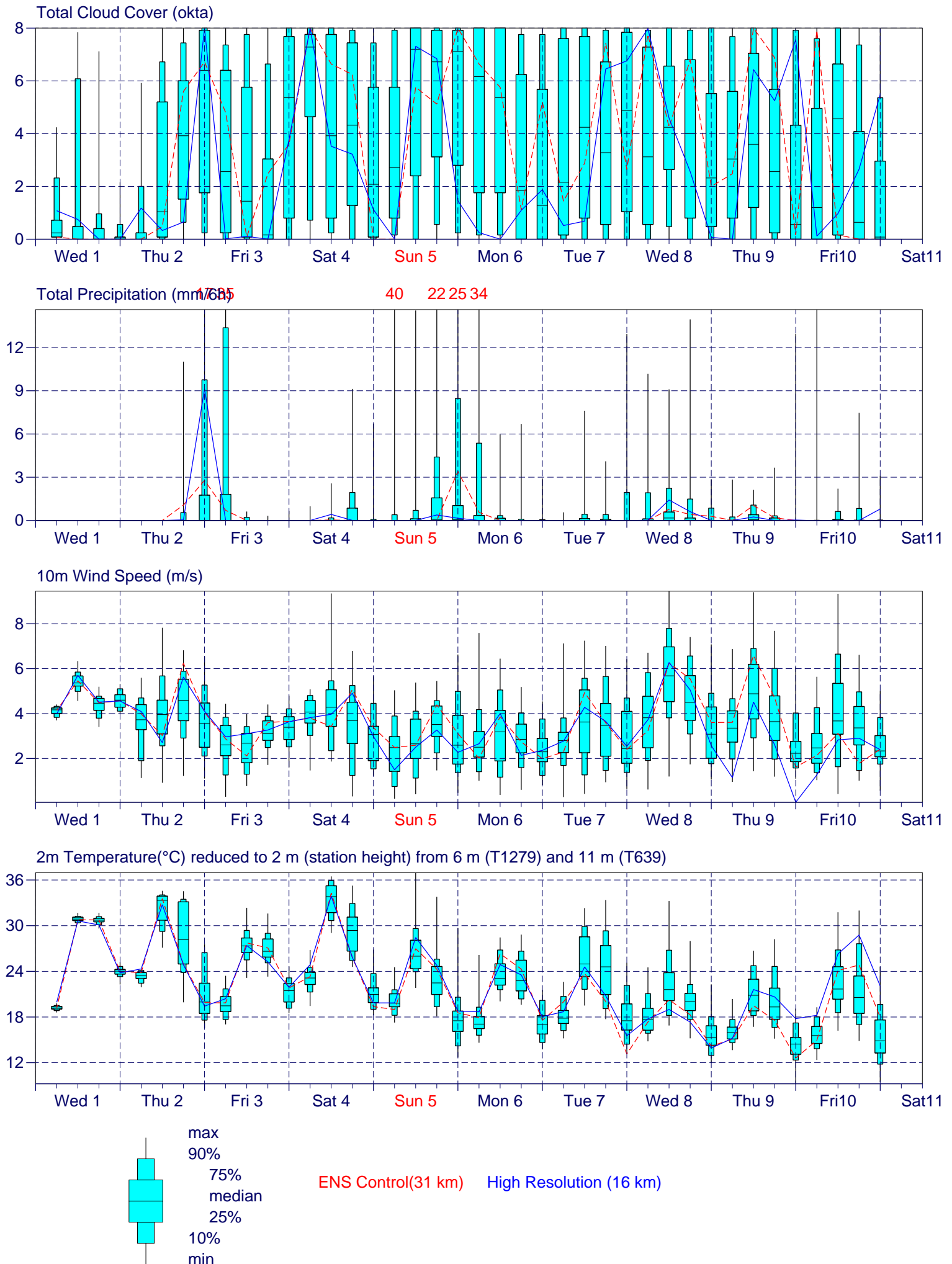
HRES Forecast and ENS Distribution Wednesday 1 July 2015 00 UTC



EPS Meteorogram

De Bilt, Netherlands 52.13°N 5.33°E (EPS land point) 2 m

HRES Forecast and ENS Distribution Wednesday 1 July 2015 00 UTC

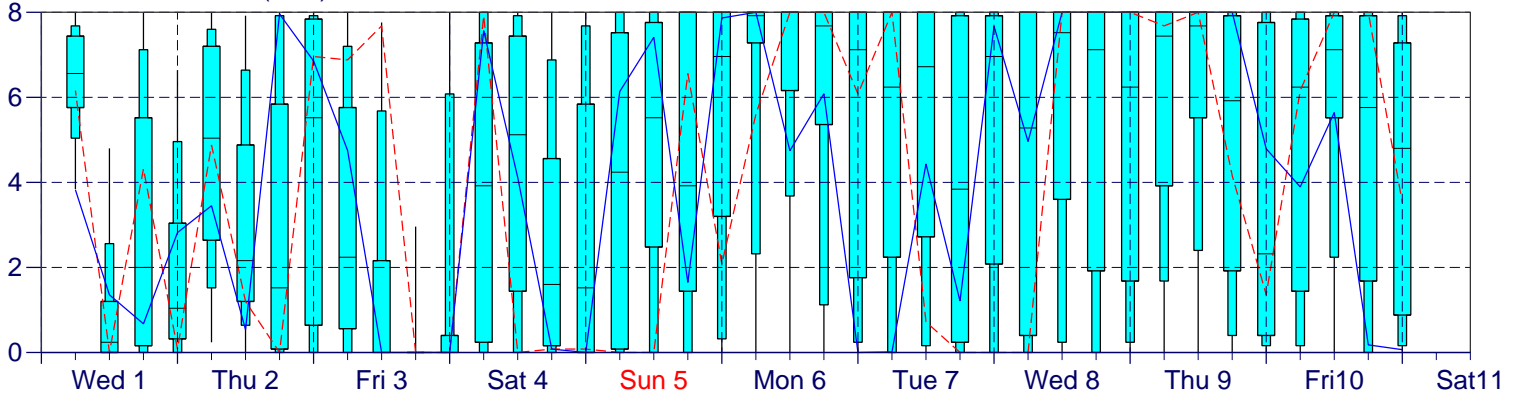


EPS Meteorogram

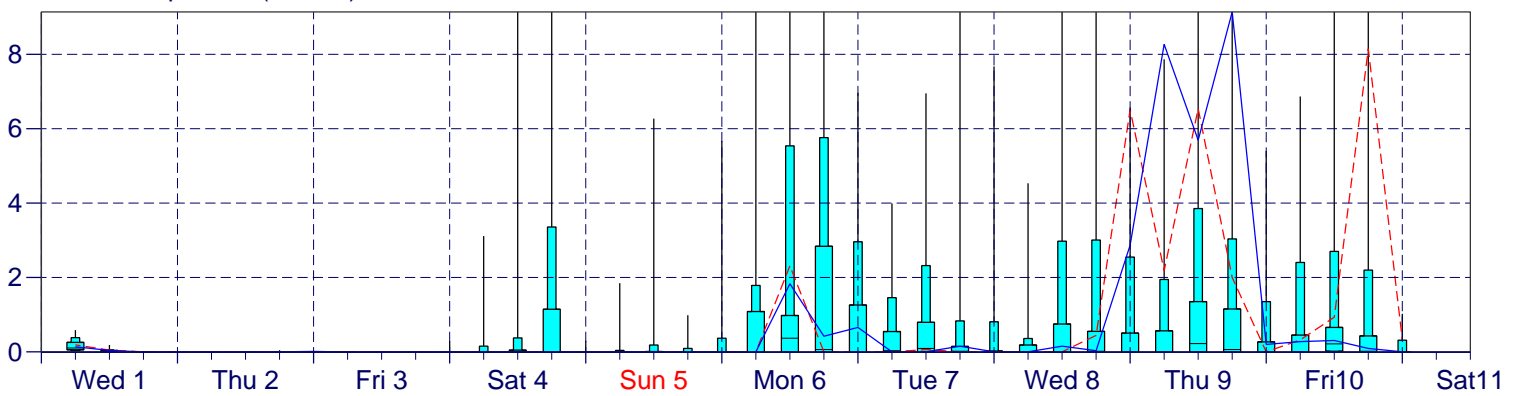
Helsinki, Finland 60.28°N 25.07°E (EPS land point) 23 m

HRES Forecast and ENS Distribution Wednesday 1 July 2015 00 UTC

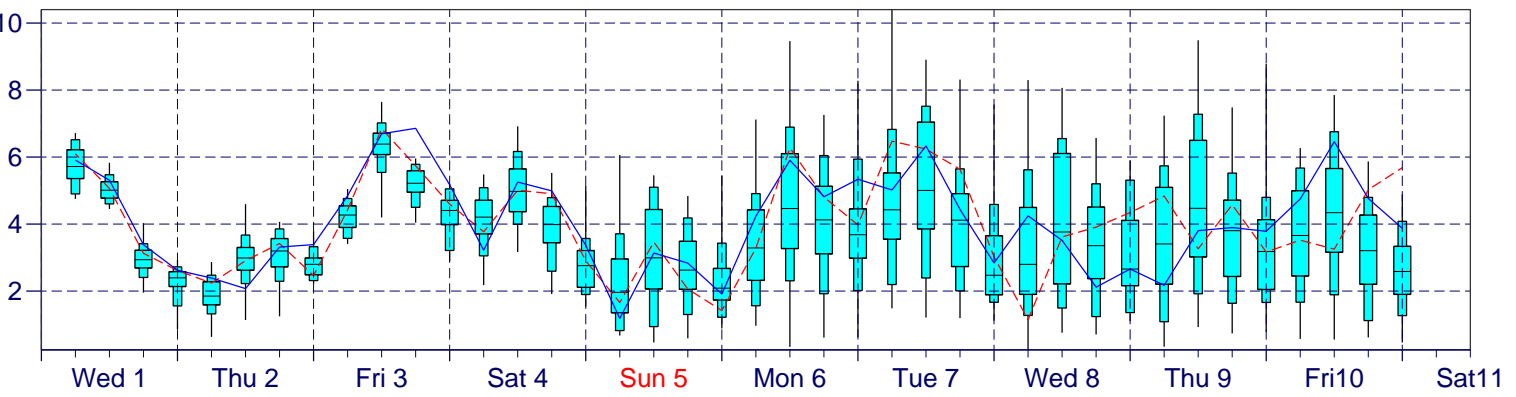
Total Cloud Cover (okta)



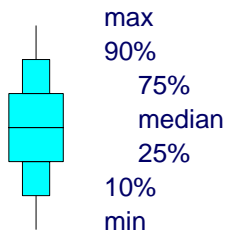
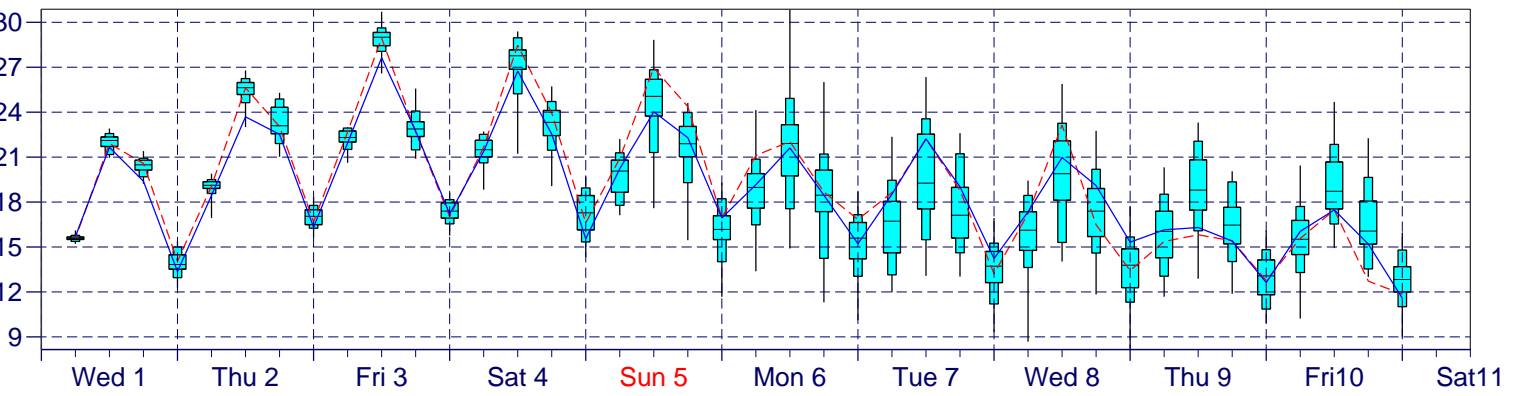
Total Precipitation (mm/6h)



10m Wind Speed (m/s)



2m Temperature(°C) reduced to 23 m (station height) from 27 m (T1279) and 34 m (T639)



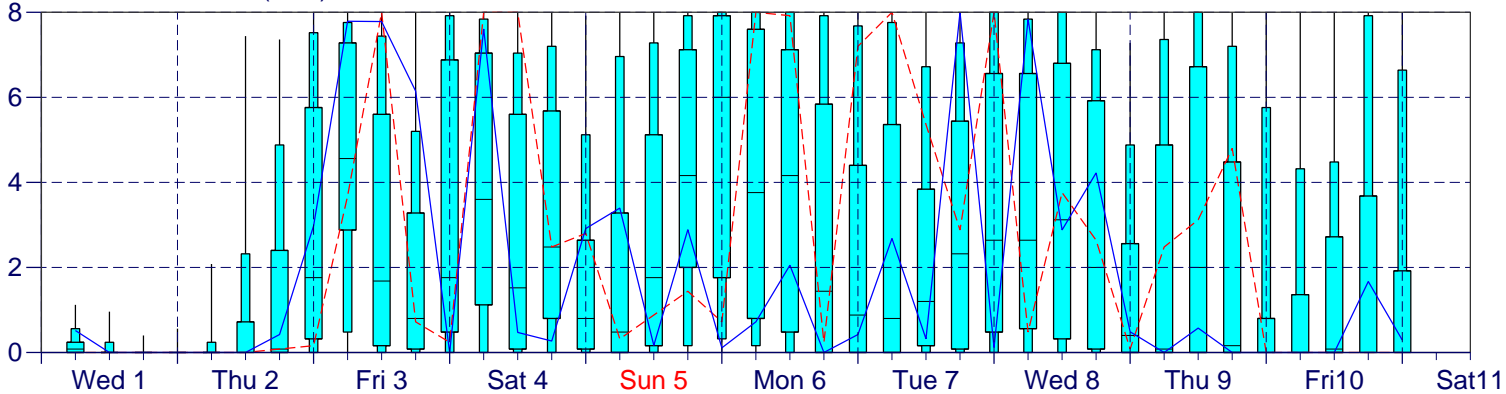
ENS Control(31 km) High Resolution (16 km)

EPS Meteorogram

Luxembourg, Luxembourg 49.6°N 6.25°E (EPS land point) 259 m

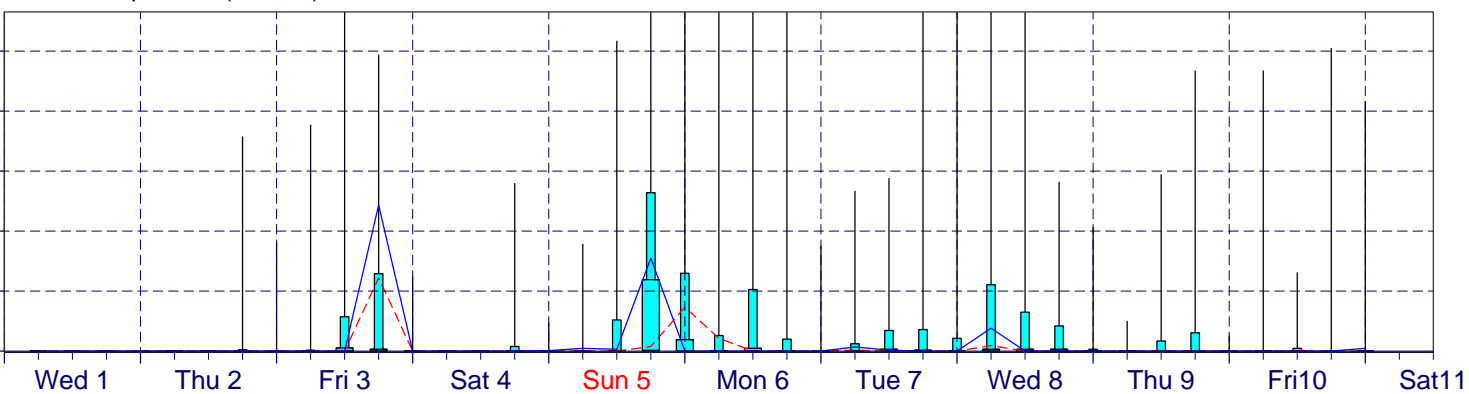
HRES Forecast and ENS Distribution Wednesday 1 July 2015 00 UTC

Total Cloud Cover (okta)

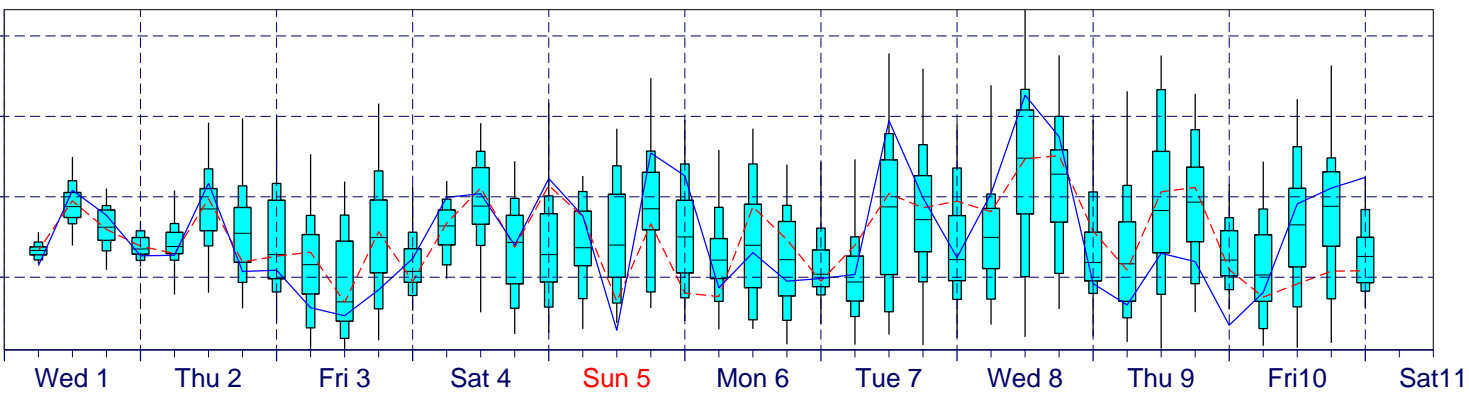


Total Precipitation (mm/6h) 8

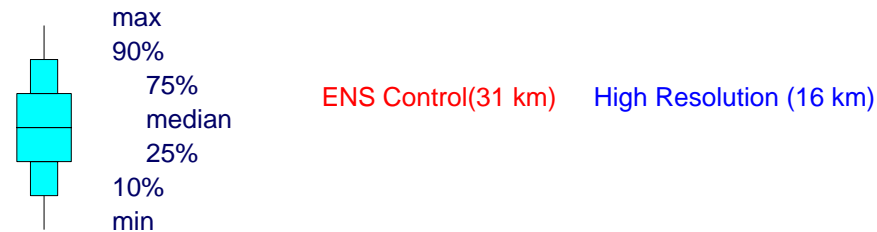
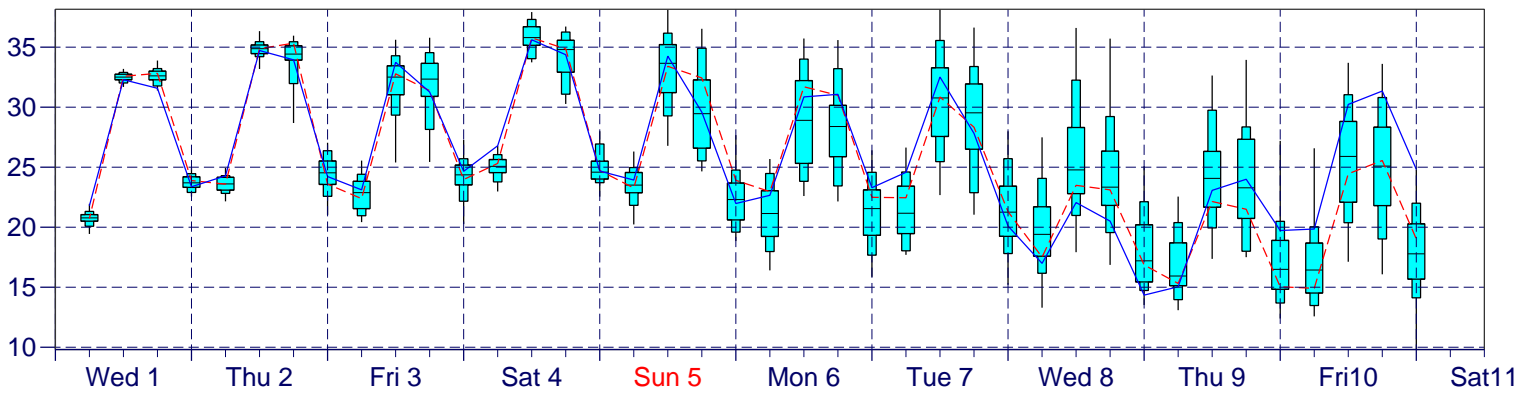
8 34 19 13 9 10 14 17



10m Wind Speed (m/s)



2m Temperature(°C) reduced to 259 m (station height) from 280 m (T1279) and 281 m (T639)

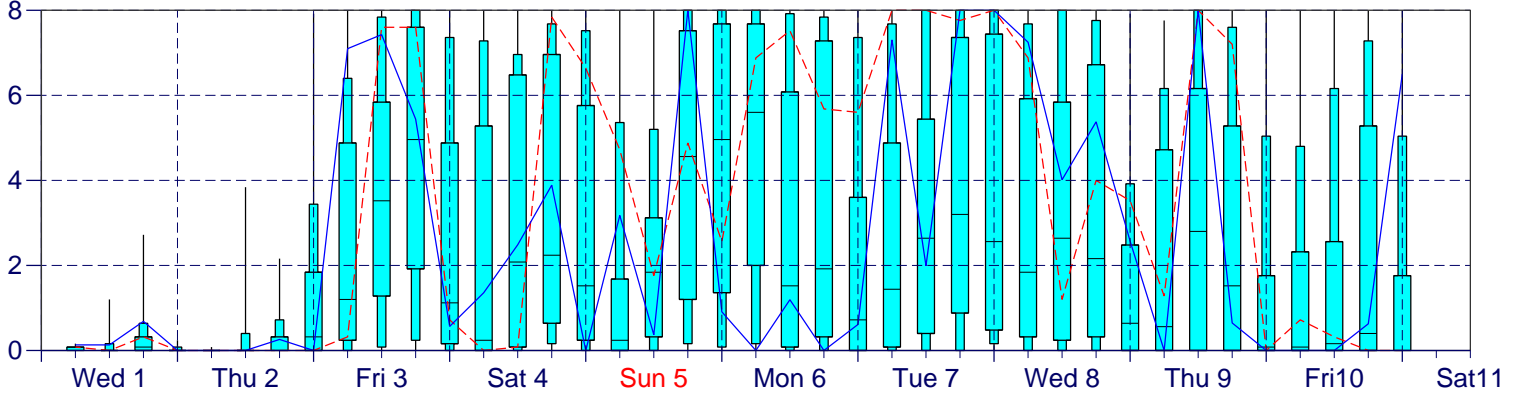


EPS Meteorogram

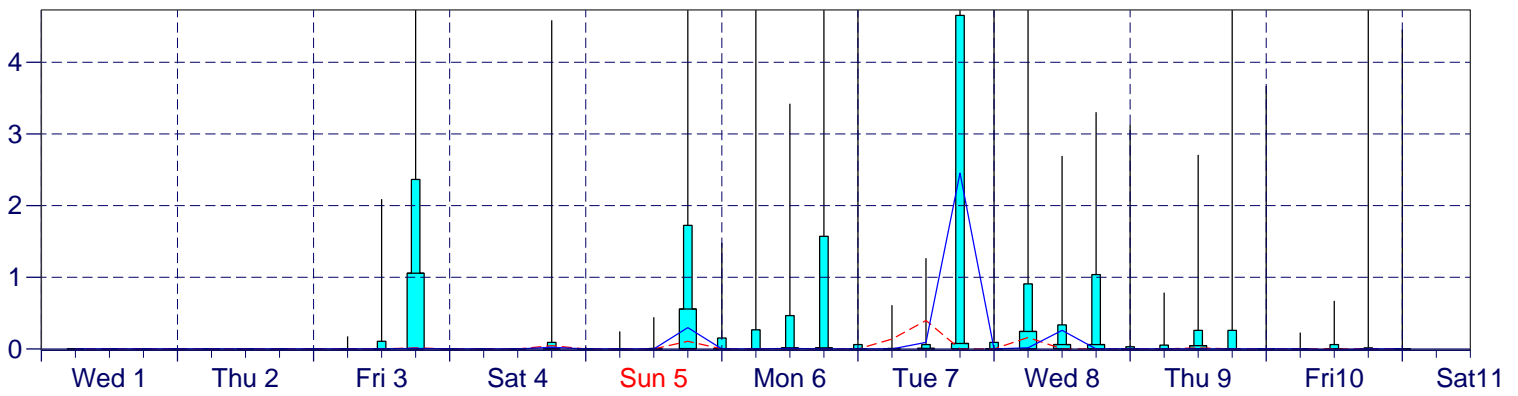
Offenbach, Germany 50.16°N 8.75°E (EPS land point) 109 m

HRES Forecast and ENS Distribution Wednesday 1 July 2015 00 UTC

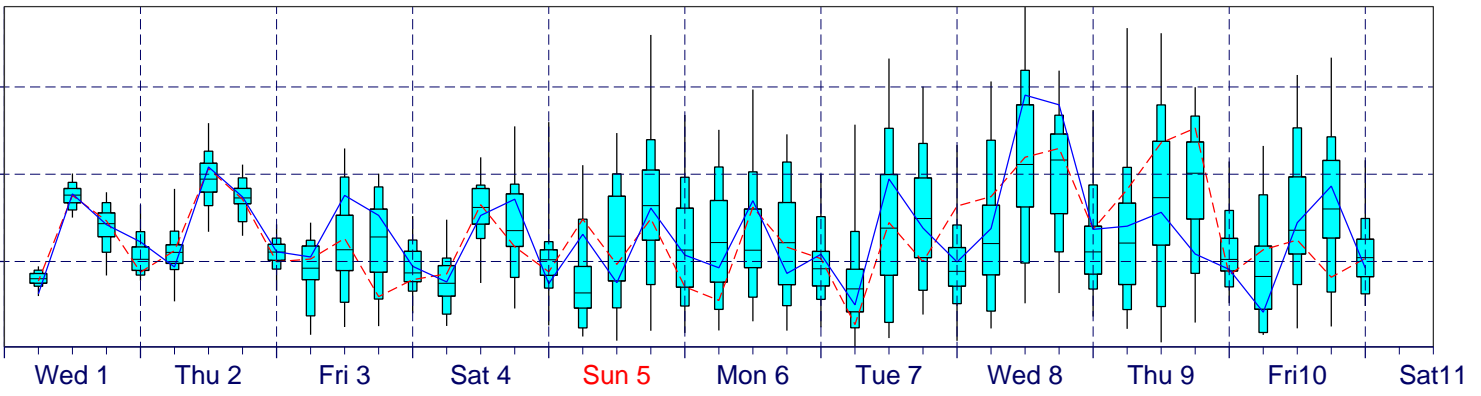
Total Cloud Cover (okta)



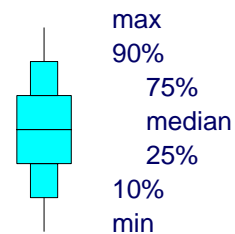
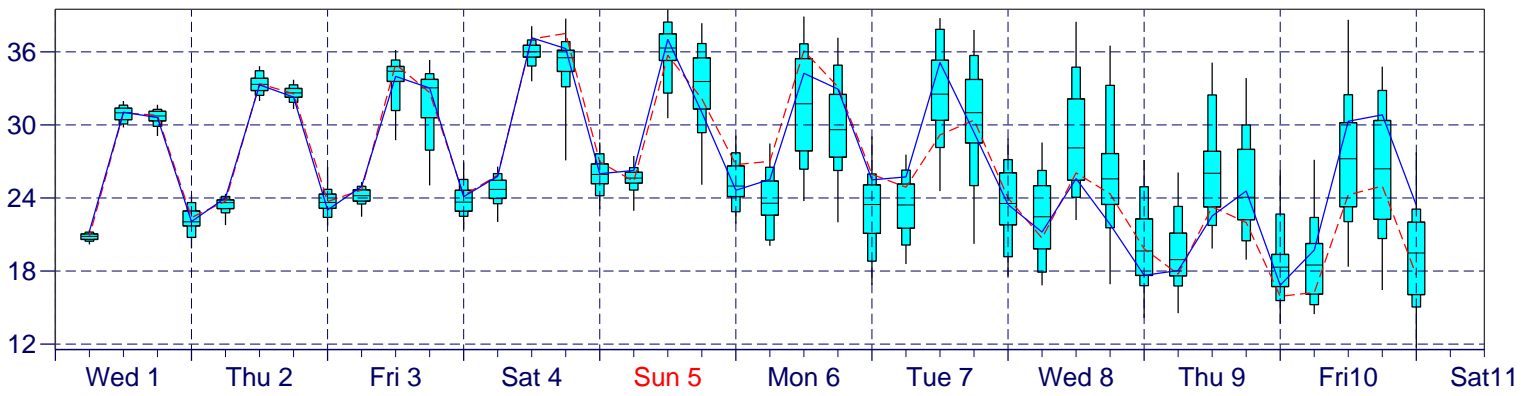
Total Precipitation (mm/6h)



10m Wind Speed (m/s)



2m Temperature(°C) reduced to 109 m (station height) from 139 m (T1279) and 161 m (T639)



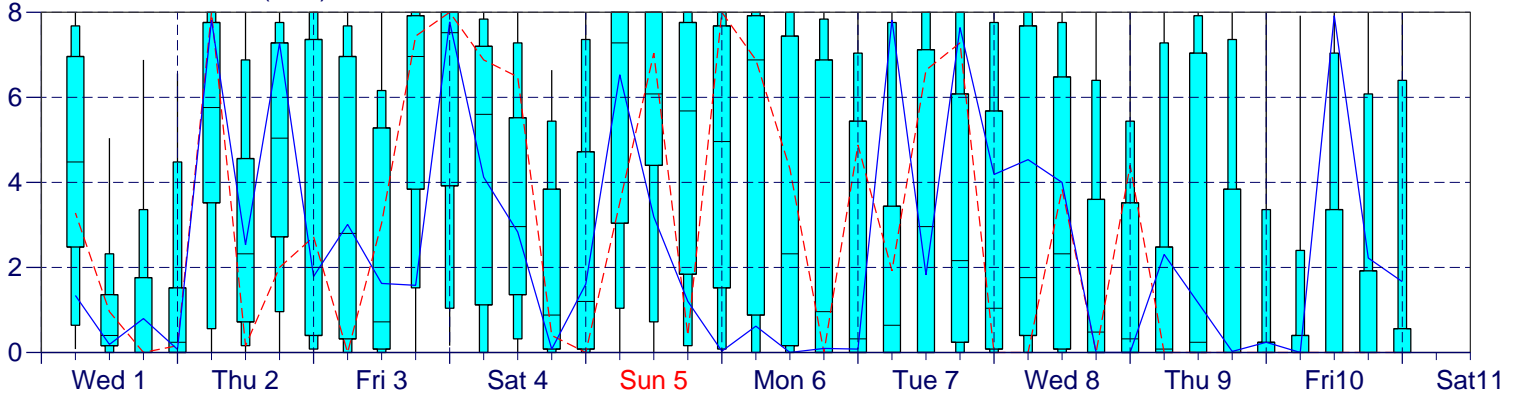
ENS Control(31 km) High Resolution (16 km)

EPS Meteorogram

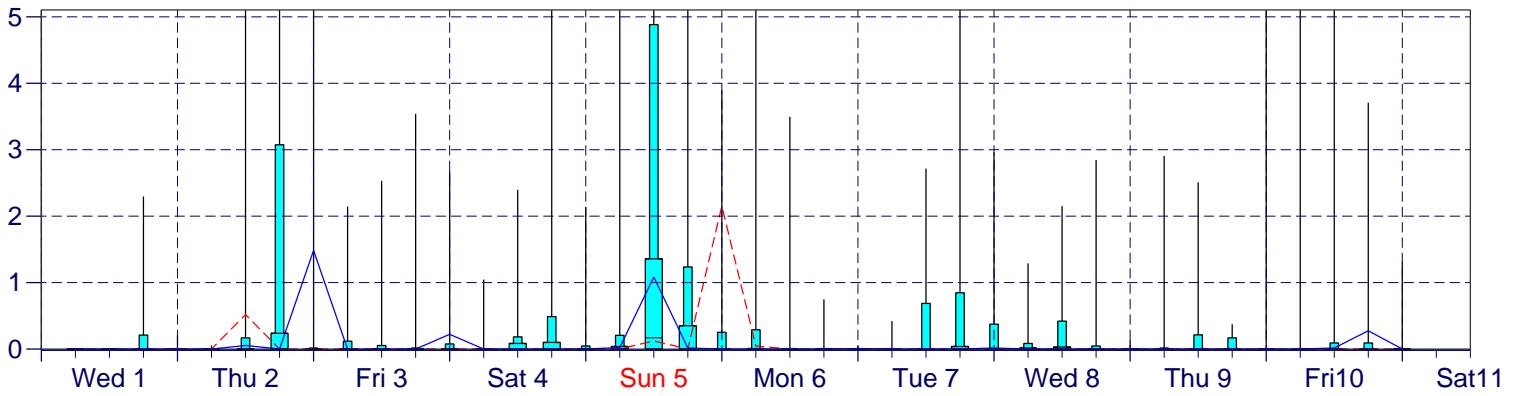
Paris, France 48.76°N 2.4°E (EPS land point) 30 m

HRES Forecast and ENS Distribution Wednesday 1 July 2015 00 UTC

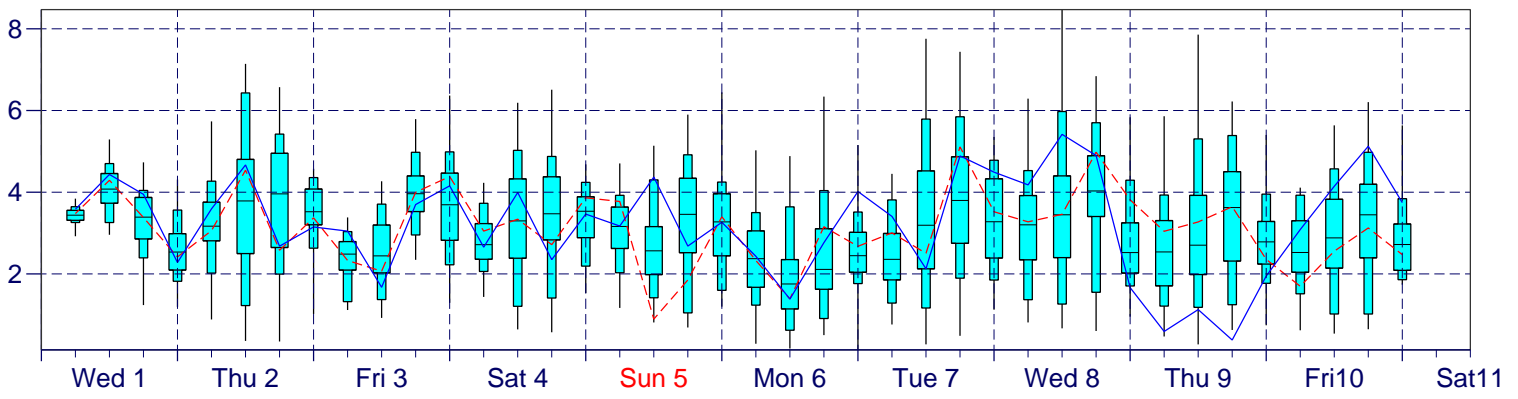
Total Cloud Cover (okta)



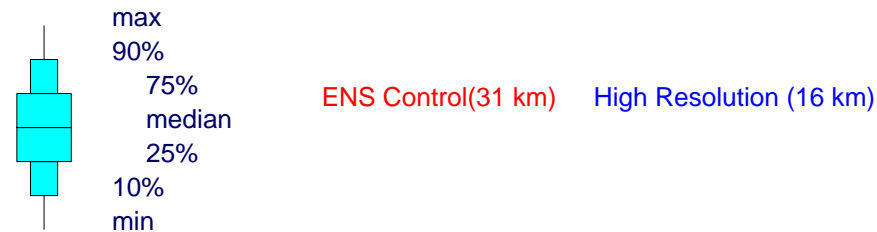
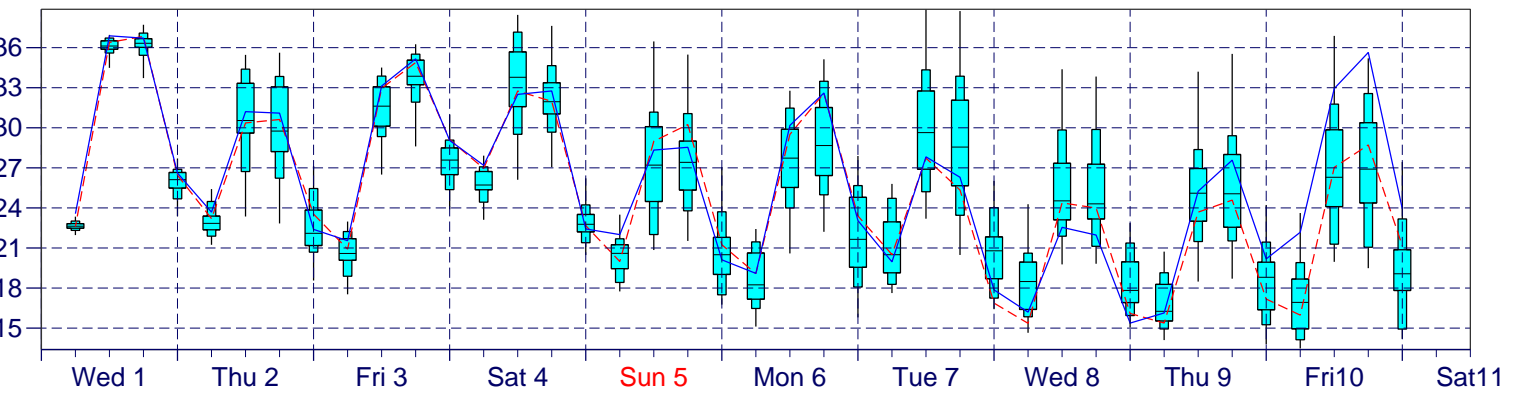
Total Precipitation (mm/6h)



10m Wind Speed (m/s)



2m Temperature(°C) reduced to 30 m (station height) from 78 m (T1279) and 90 m (T639)

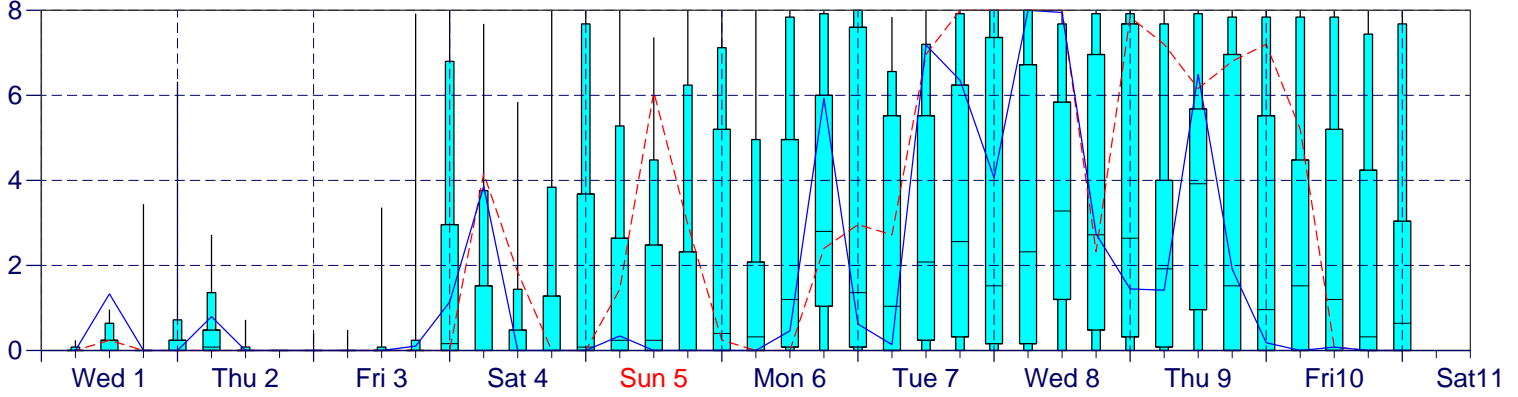


EPS Meteorogram

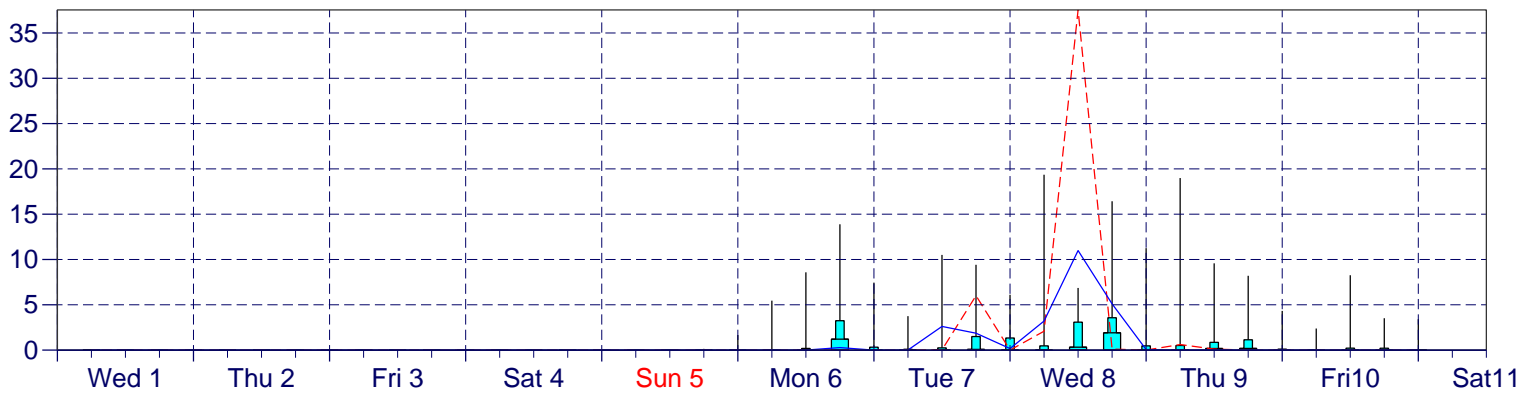
Praha, Czech Republic 50.16°N 14.58°E (EPS land point) 245 m

HRES Forecast and ENS Distribution Wednesday 1 July 2015 00 UTC

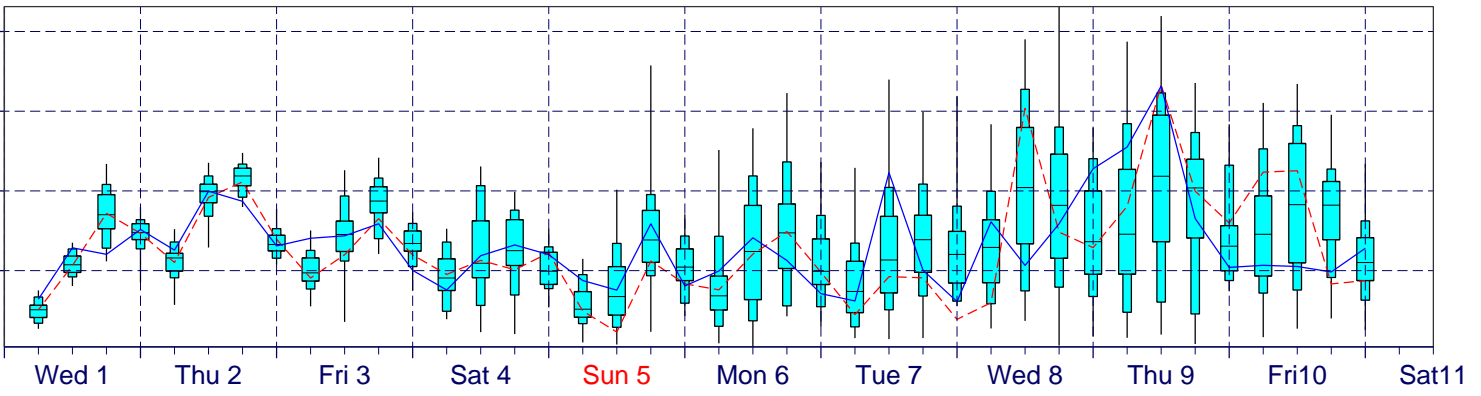
Total Cloud Cover (okta)



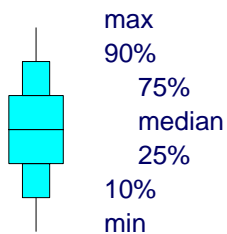
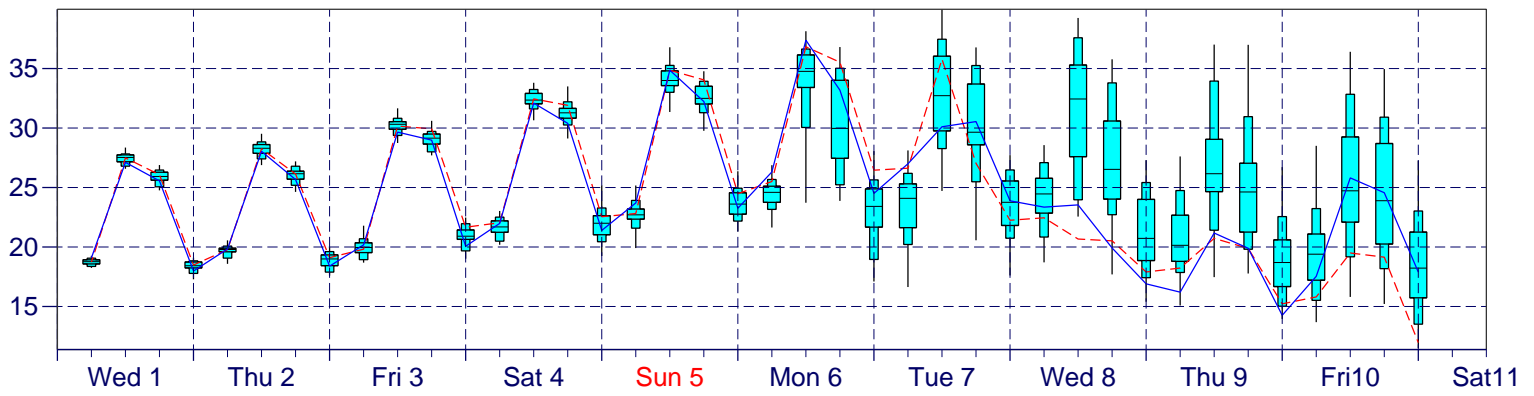
Total Precipitation (mm/6h)



10m Wind Speed (m/s)



2m Temperature(°C) reduced to 245 m (station height) from 232 m (T1279) and 249 m (T639)

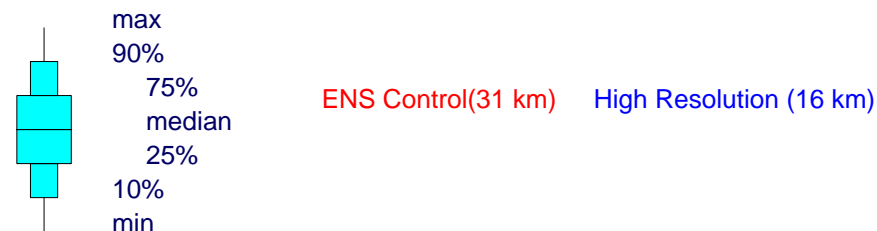
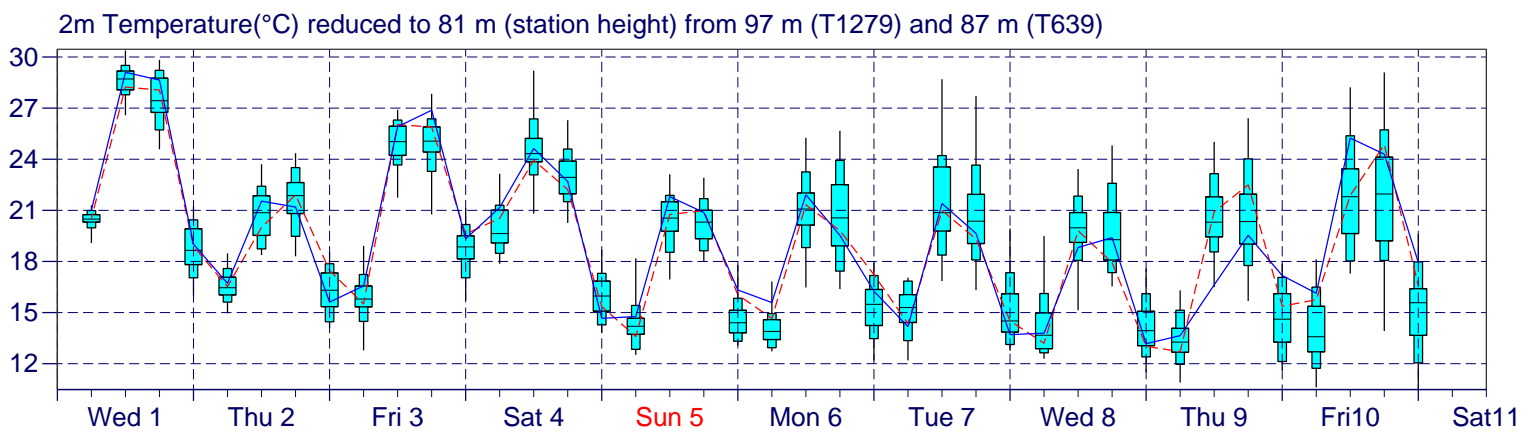
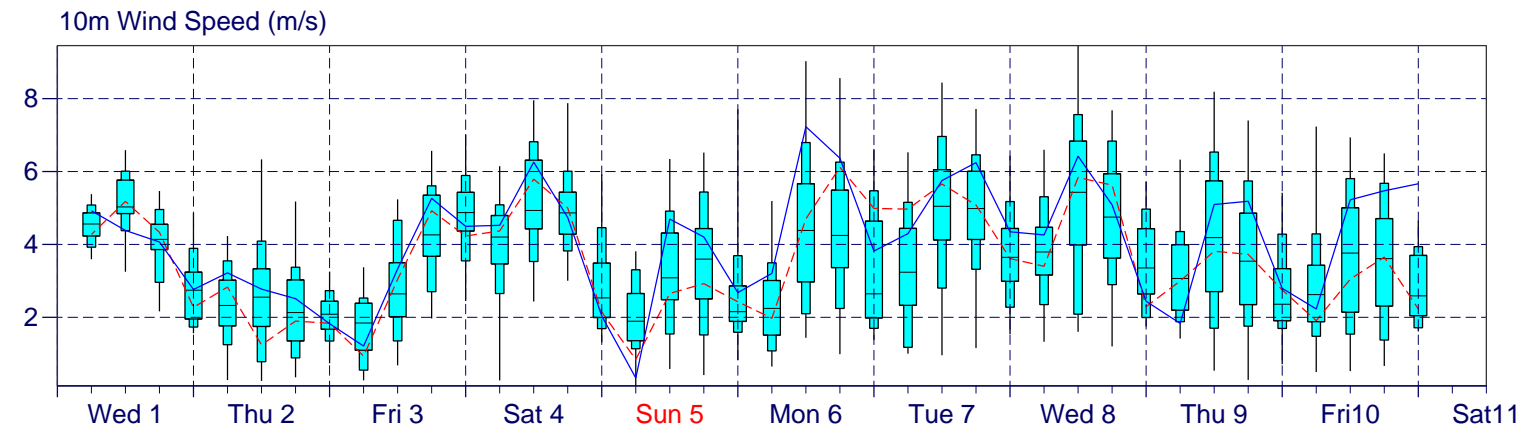
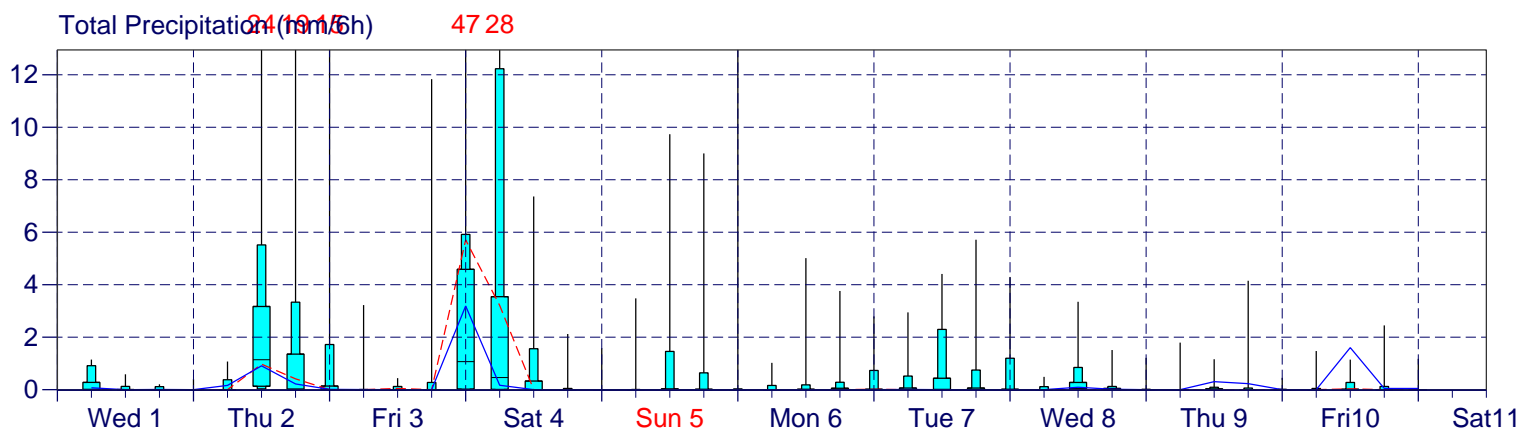
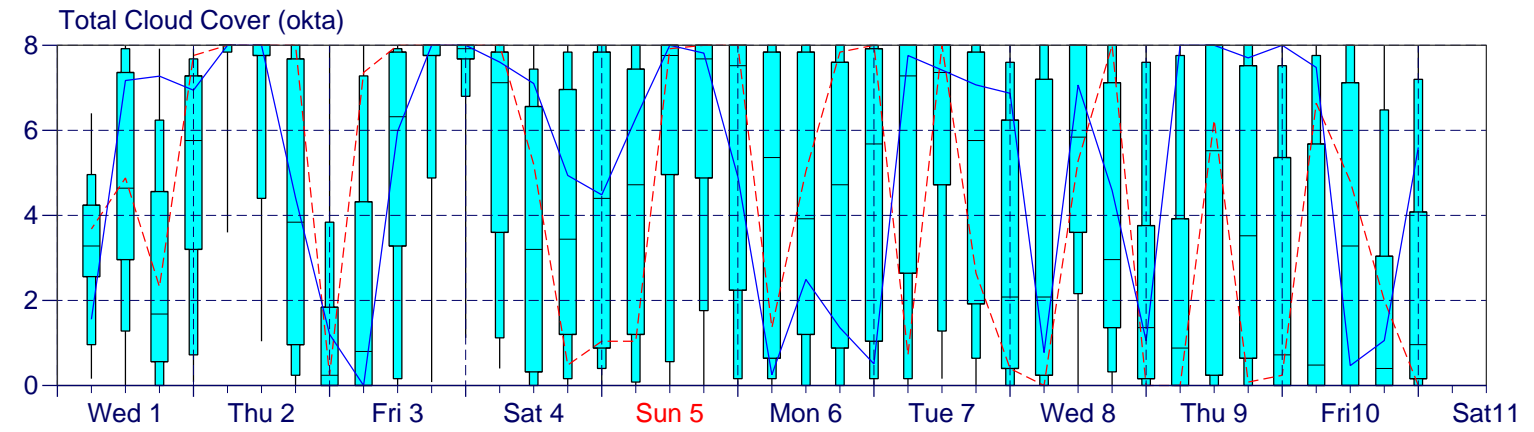


ENS Control(31 km) High Resolution (16 km)

EPS Meteorogram

Reading, UK 51.57°N 0.83°W (EPS land point) 81 m

HRES Forecast and ENS Distribution Wednesday 1 July 2015 00 UTC

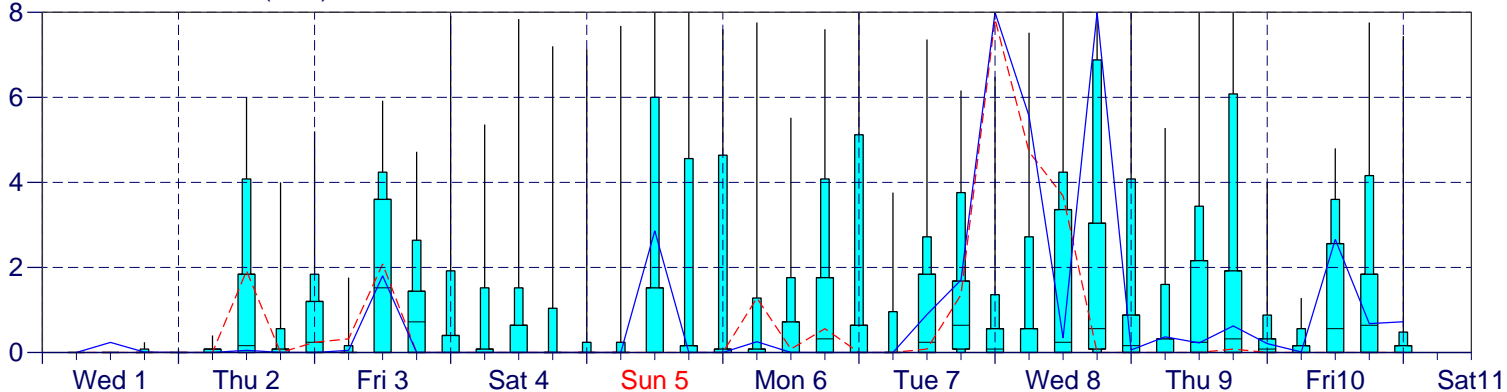


EPS Meteorogram

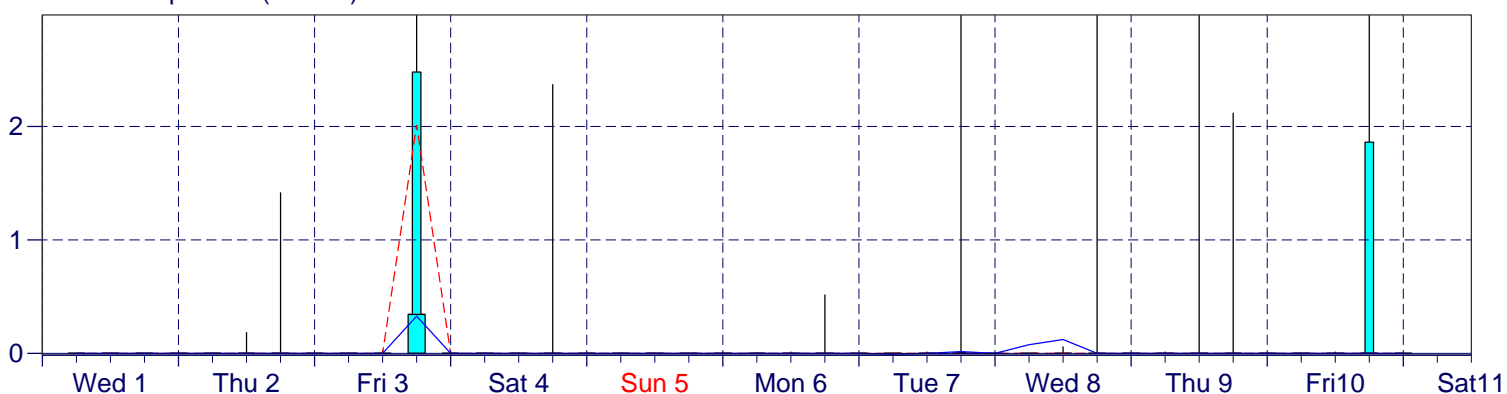
Roma, Italy 42.01°N 12.6°E (EPS land point) 14 m

HRES Forecast and ENS Distribution Wednesday 1 July 2015 00 UTC

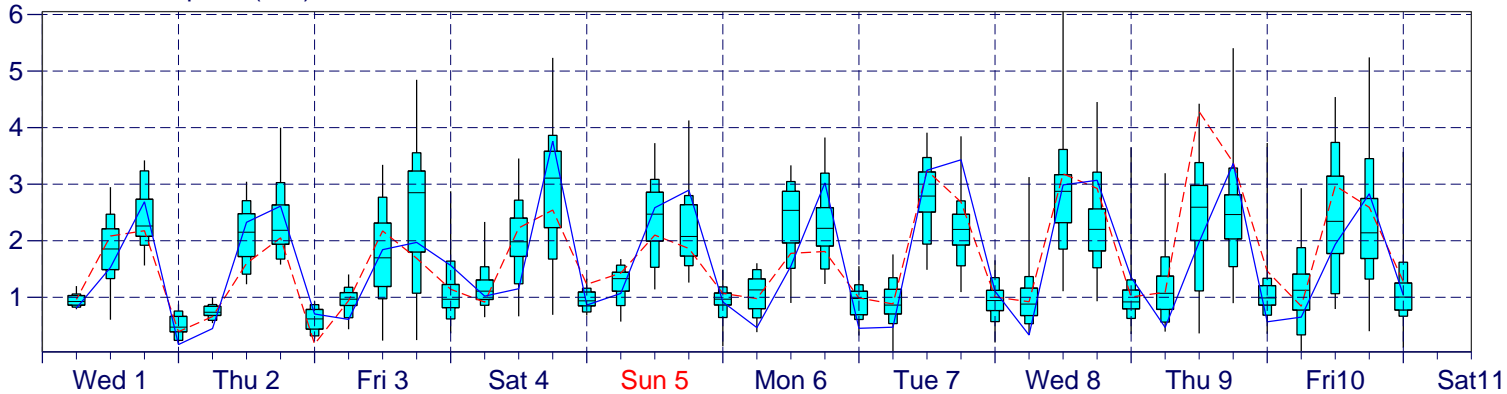
Total Cloud Cover (okta)



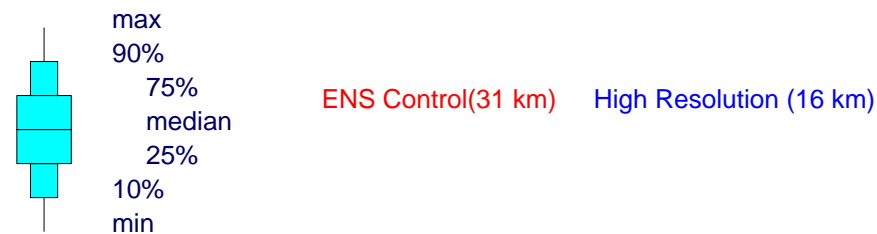
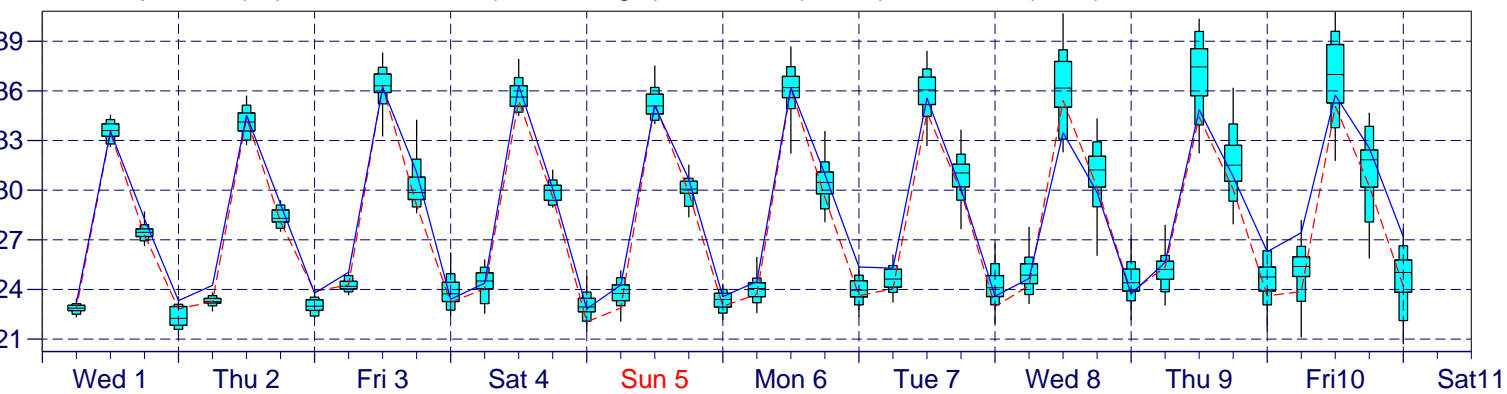
Total Precipitation (mm/6h)



10m Wind Speed (m/s)



2m Temperature(°C) reduced to 14 m (station height) from 81 m (T1279) and 148 m (T639)



EPS Meteorogram

Vienna, Austria 48.2°N 16.4°E (EPS land point) 164 m

HRES Forecast and ENS Distribution Wednesday 1 July 2015 00 UTC

