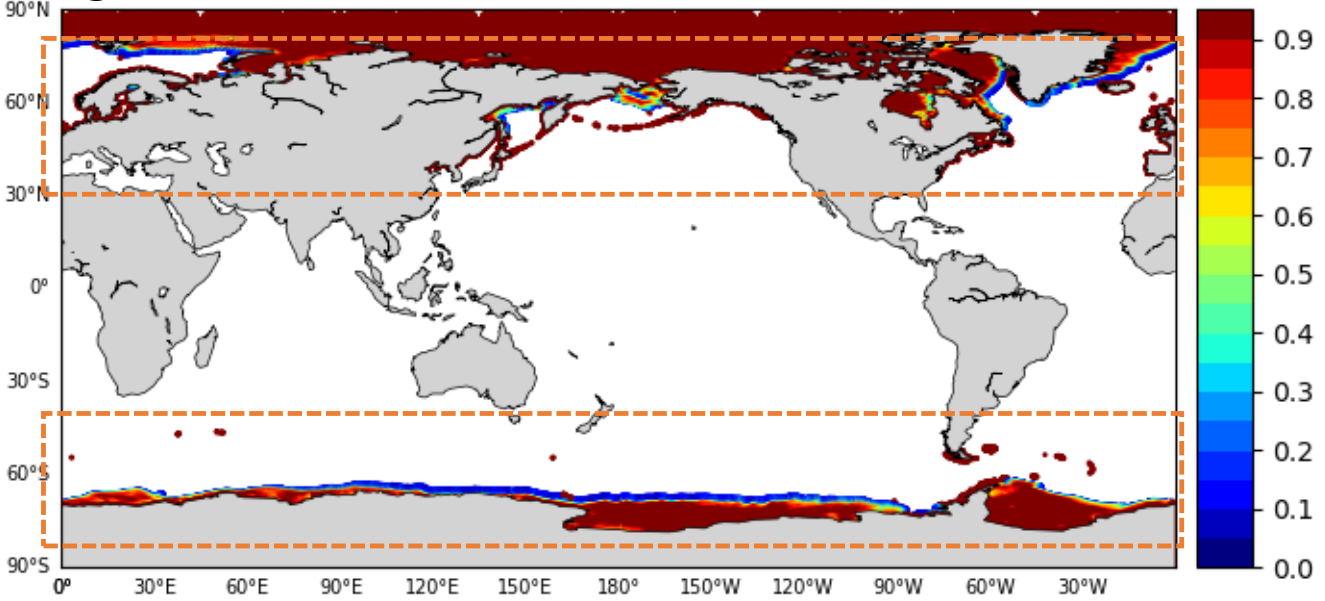
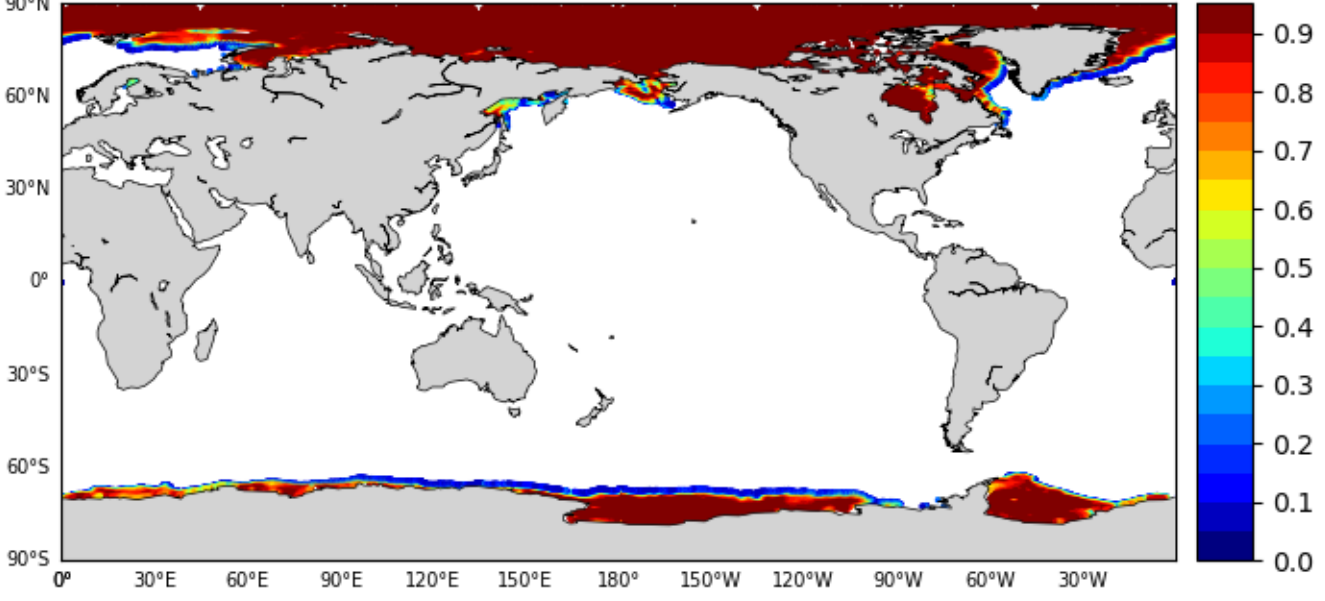


# Sea ice initial condition

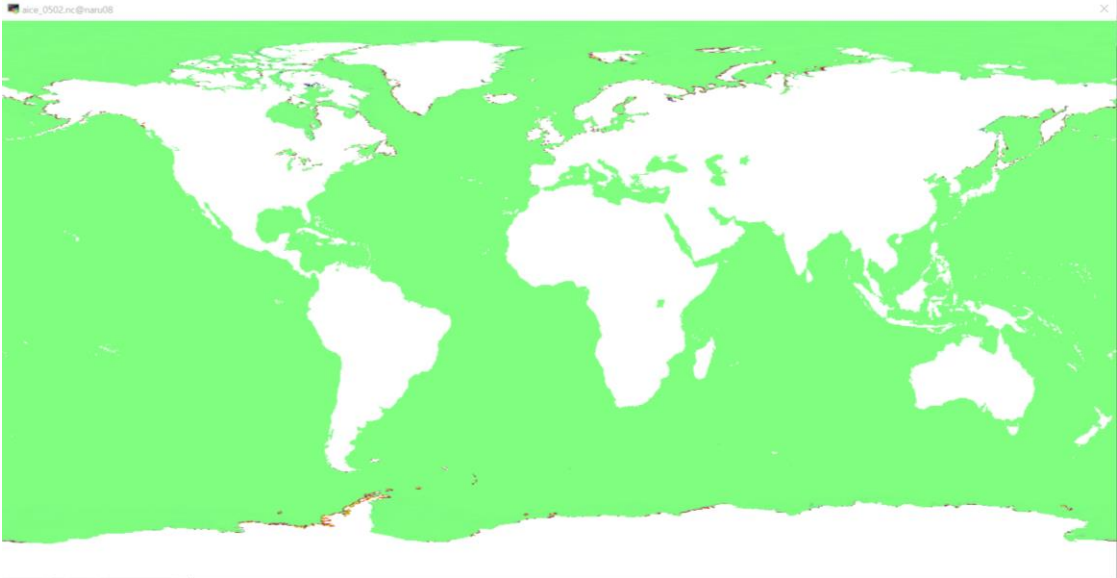
(Original)



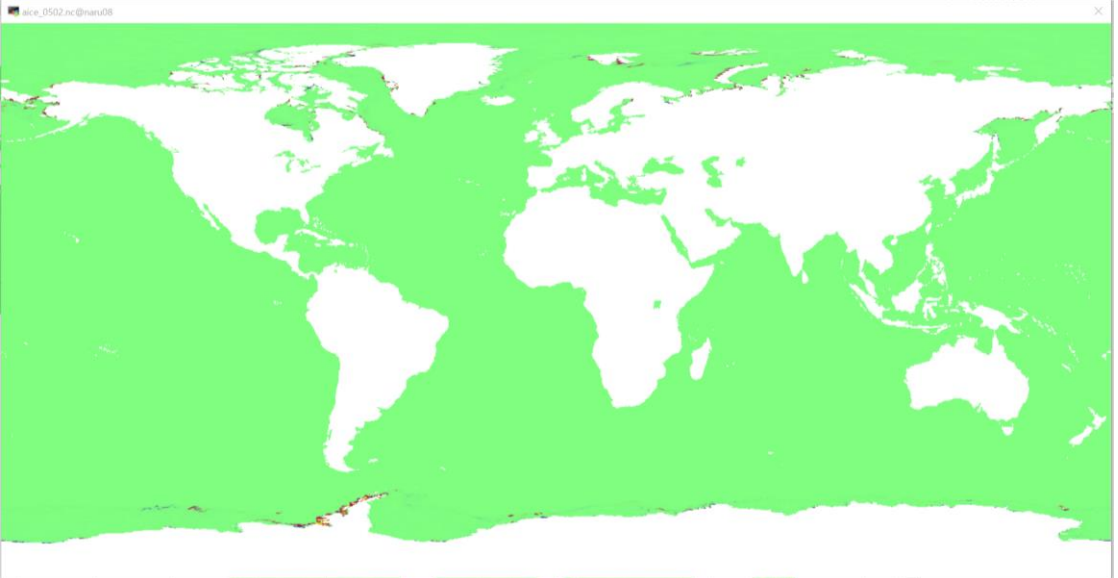
(Fixed)



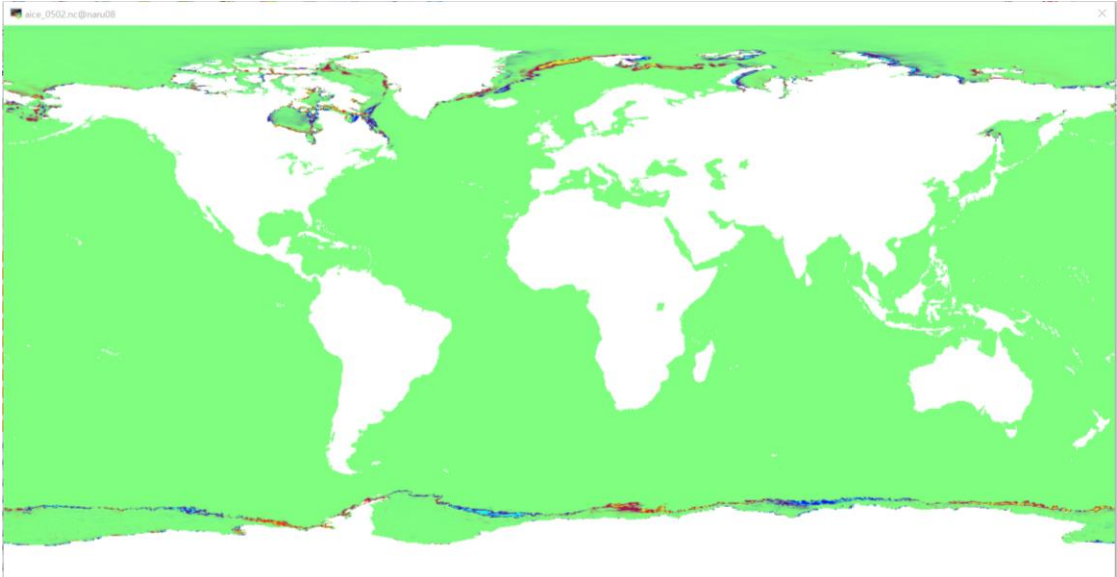
# Ice Cover (Original – Fixed diff.)



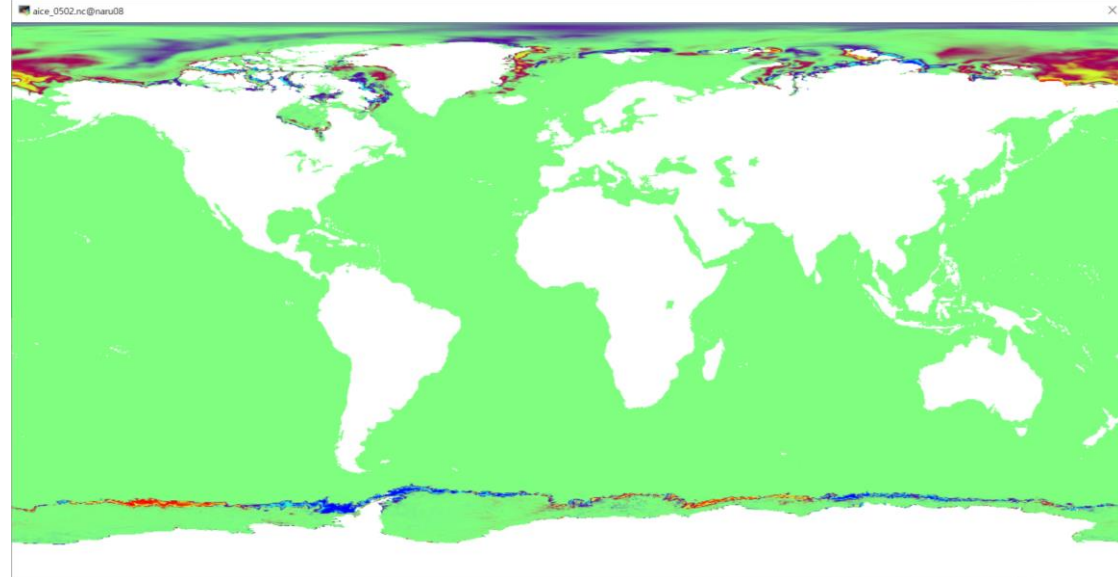
20230502 (t=1)



20230510 (t=8)



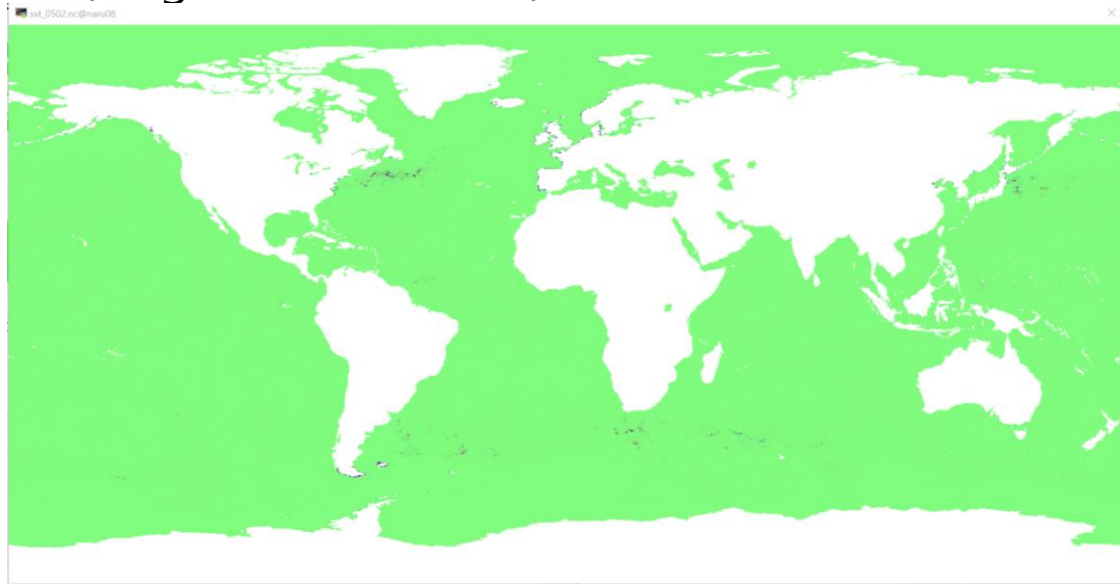
202305022 (t=20)



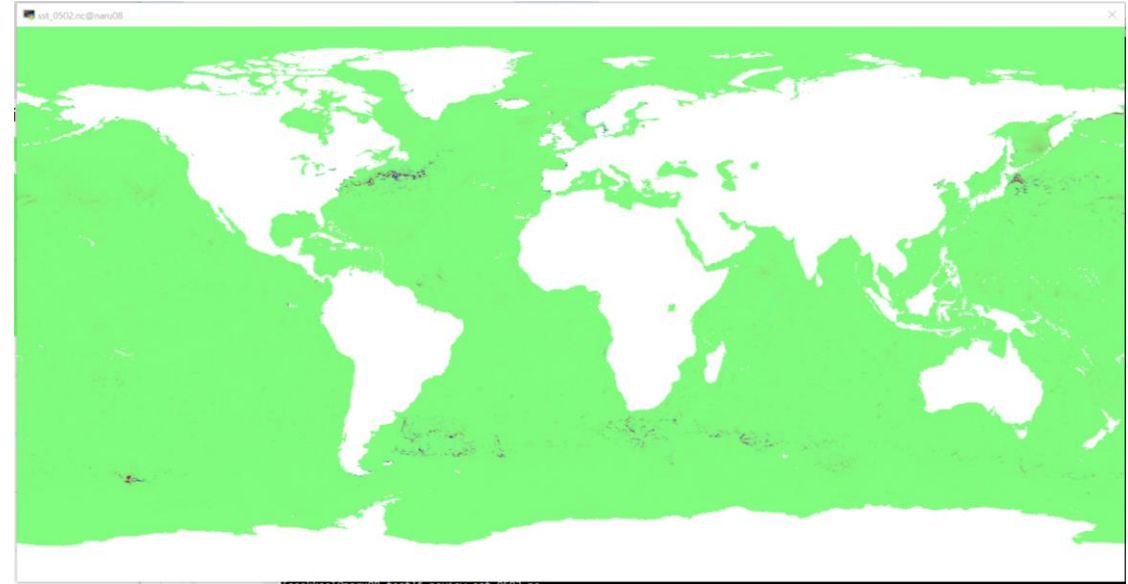
20230701 (t=60)



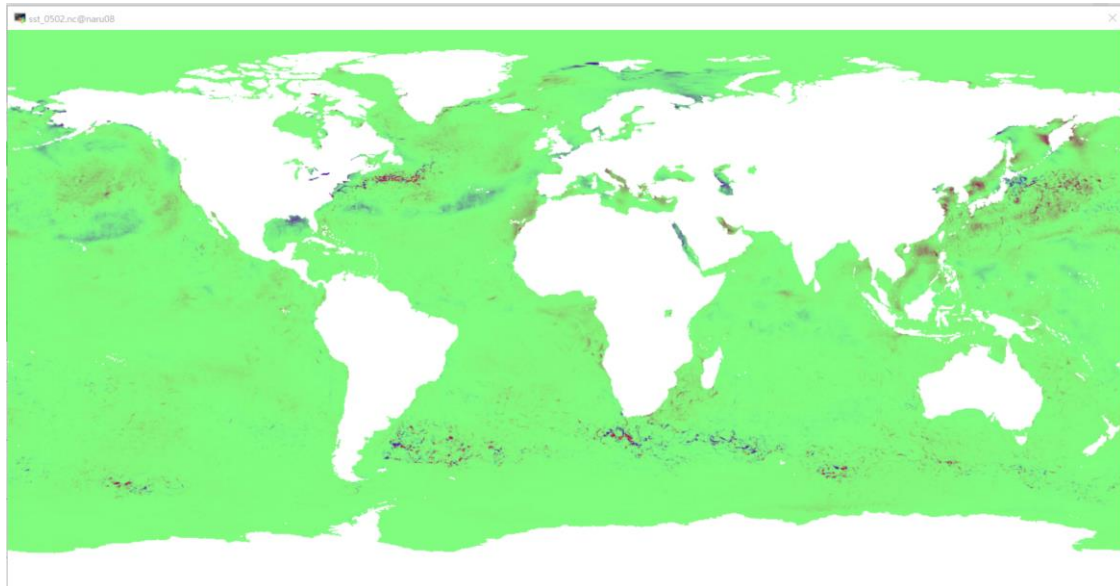
# SST (Original – Fixed diff.)



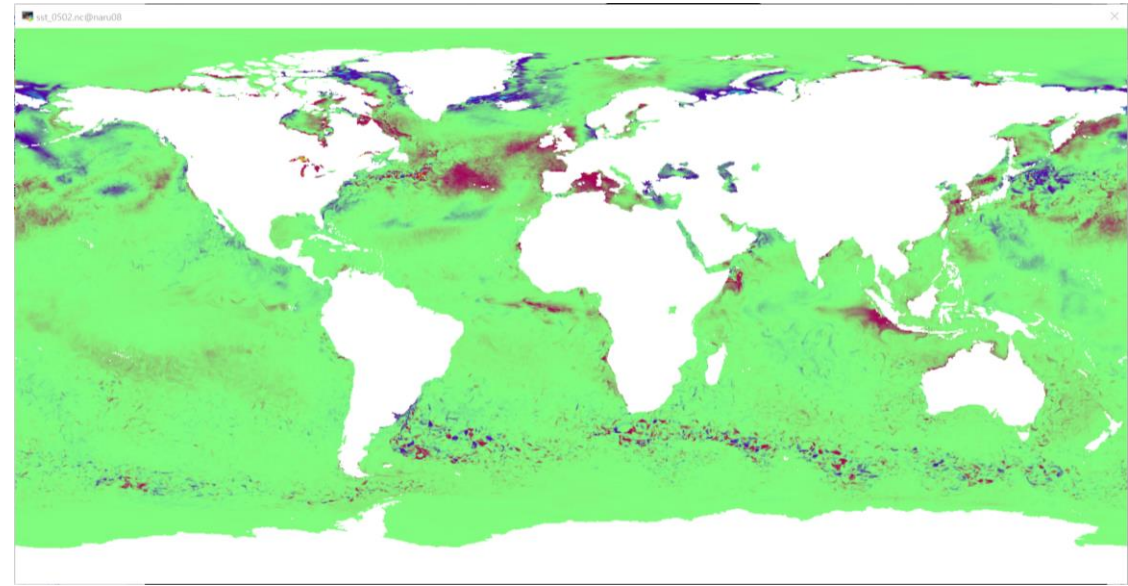
20230502 (t=1)



20230510 (t=8)



202305022 (t=20)

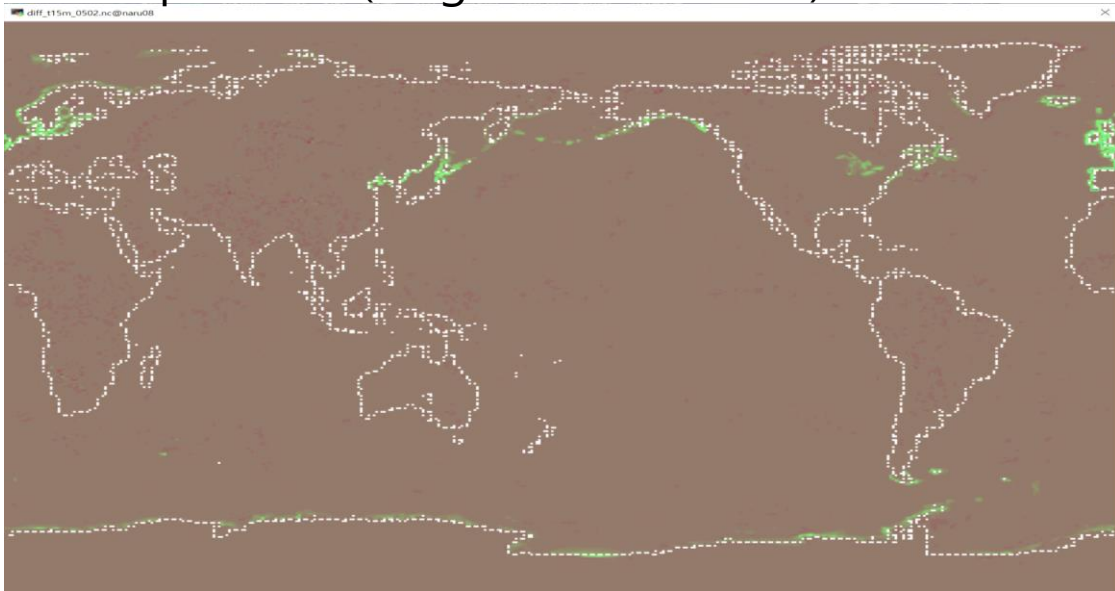


20230701 (t=60)

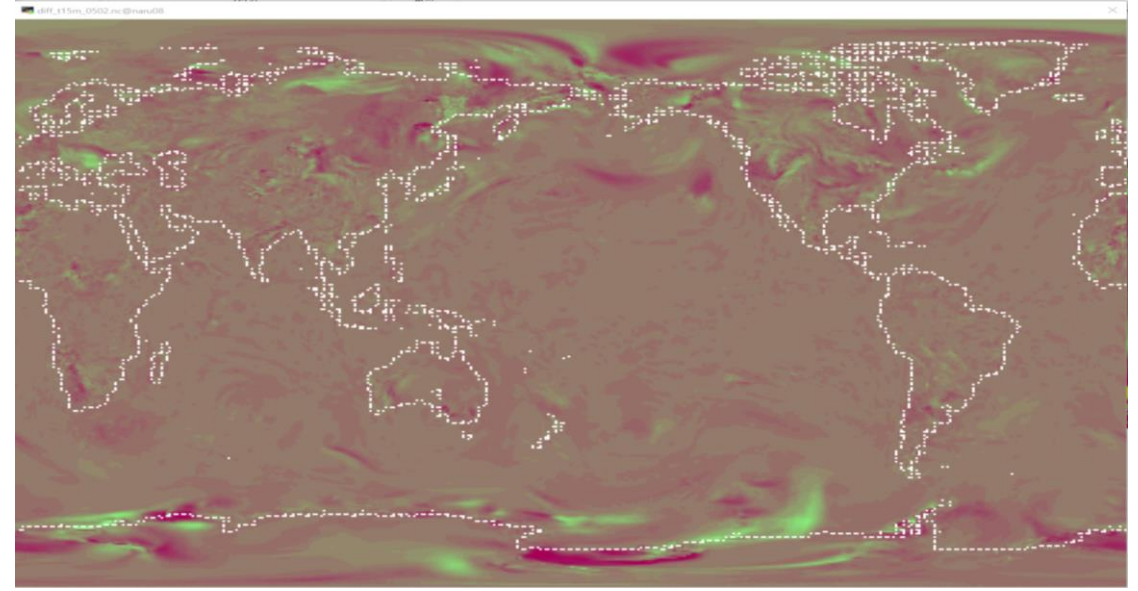




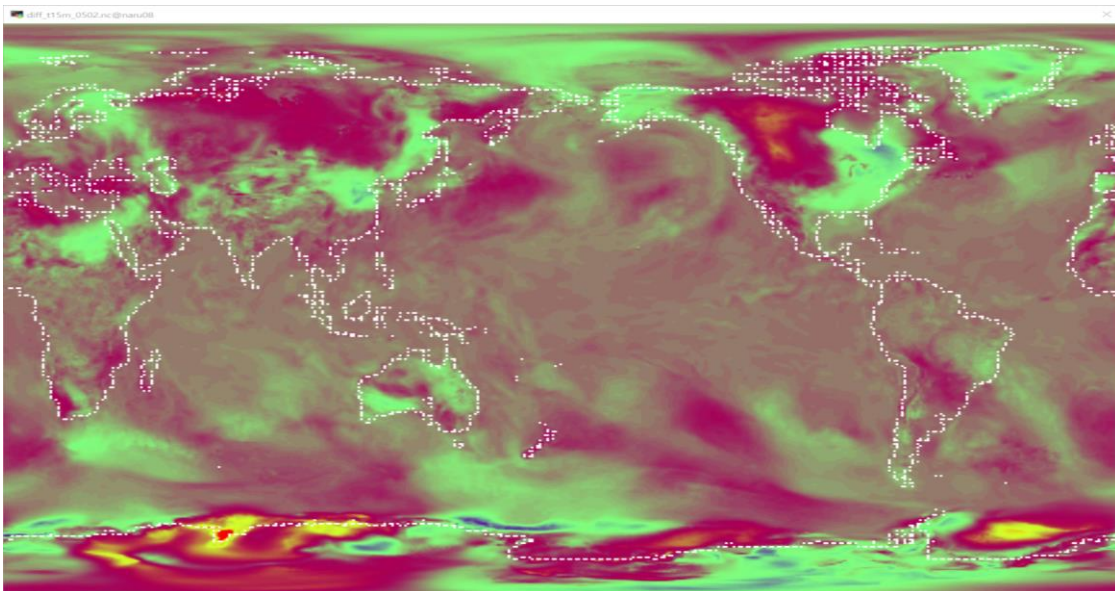
# 2m temperature (Original – Fixed diff.)



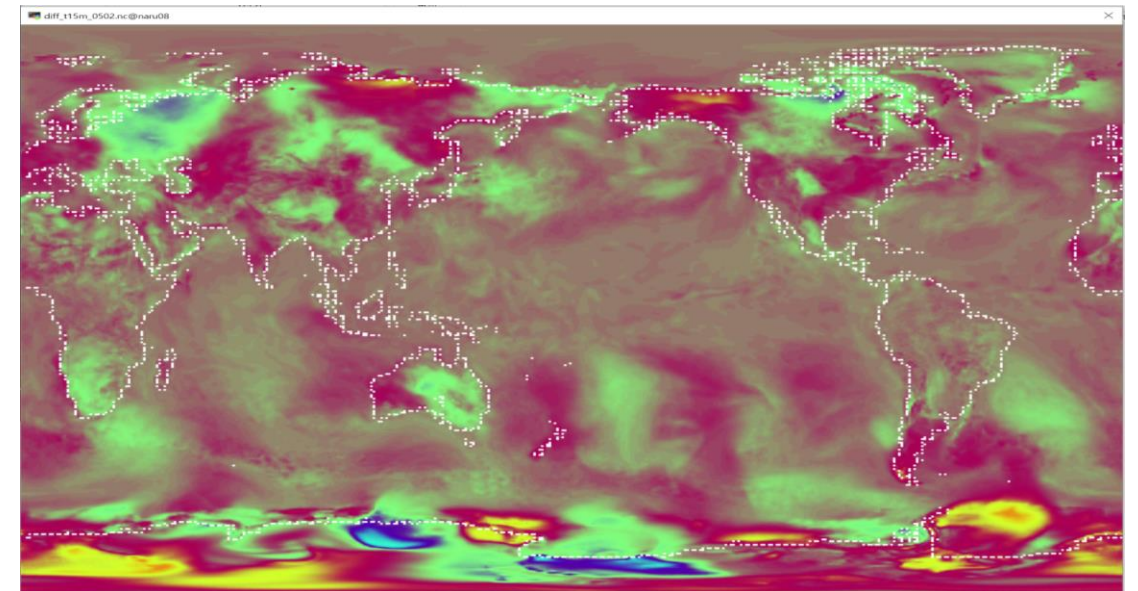
20230502 (t=1)



20230510 (t=8)



202305022 (t=20)



20230701 (t=60)

