

Deployment/migration of
ESSL Weather Data Displayer
in the European Weather Cloud

Deployment/migration of ESSL Weather Data Displayer in the European Weather Cloud

Displayer uses

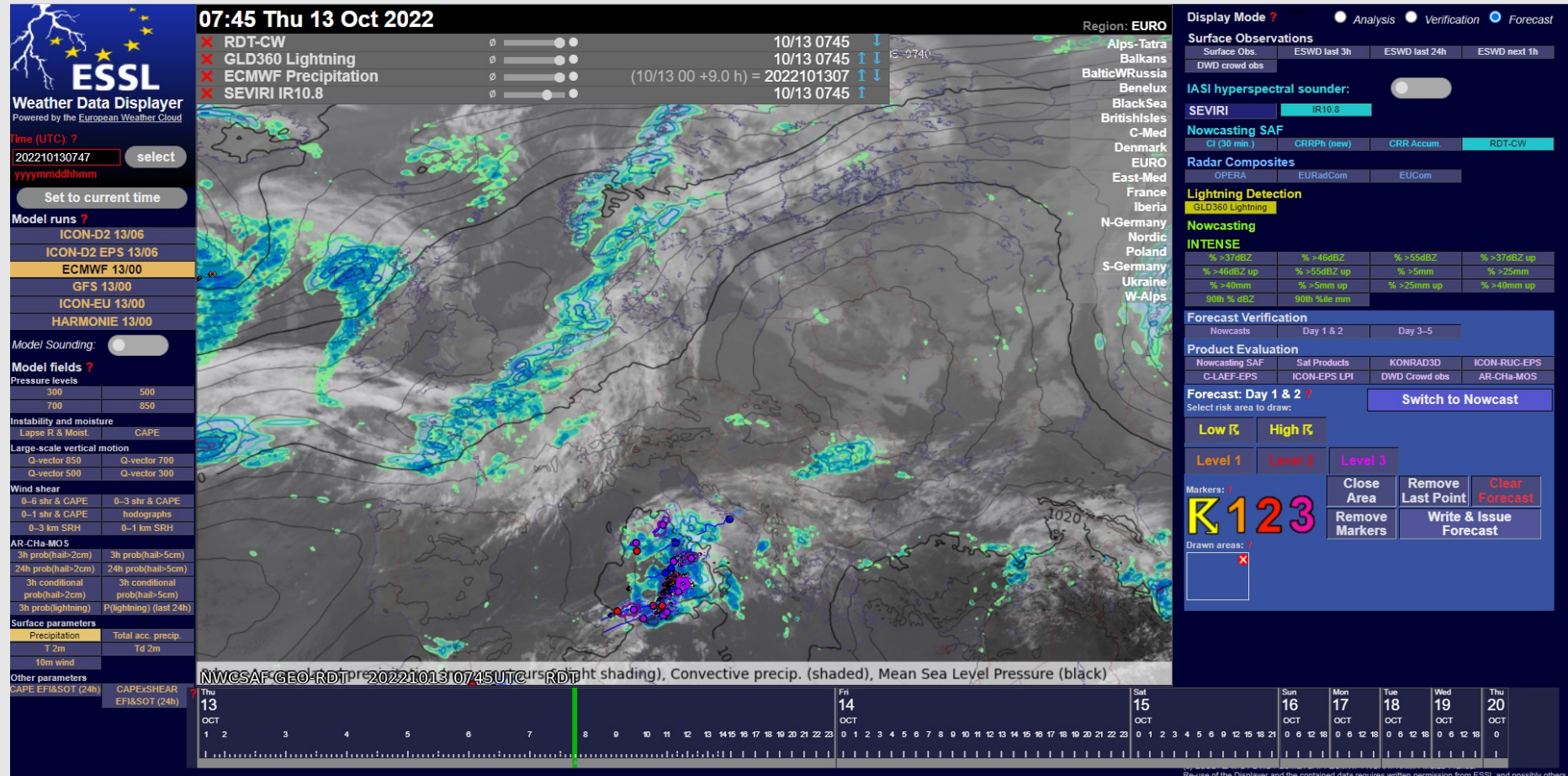
- training
- evaluation of new fore-/ nowcasting tools



- case studies

Strengths

- speed
- easy to add new tools / versions
- archive

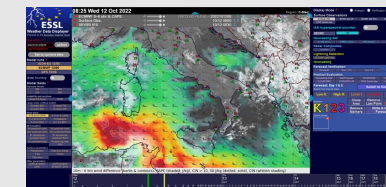
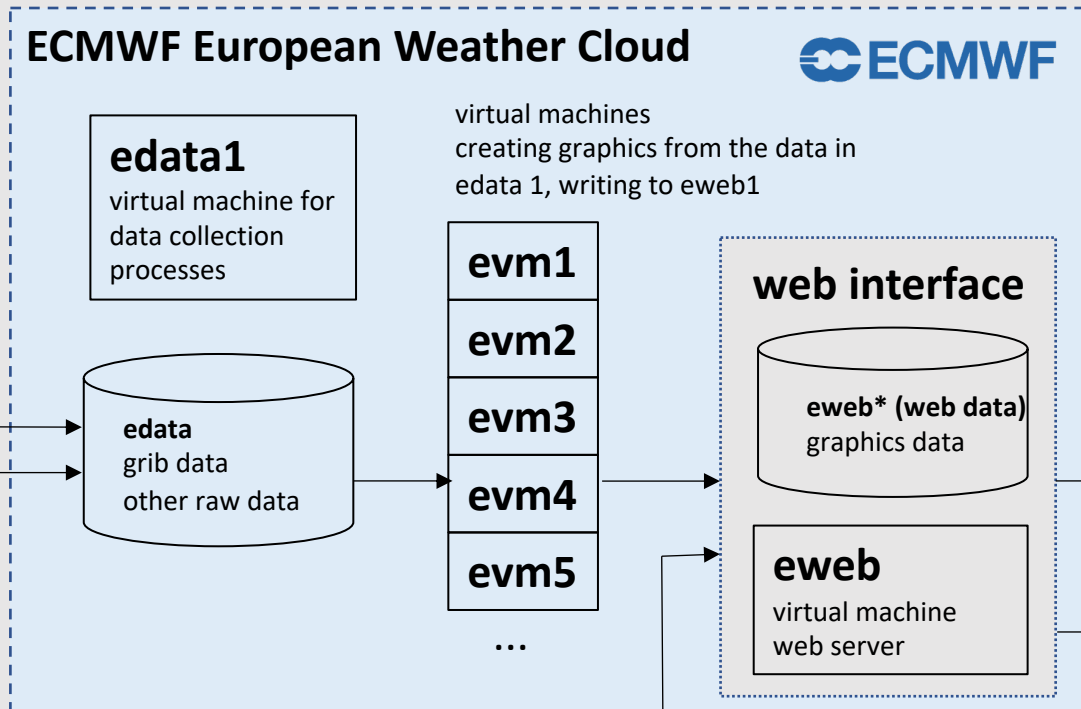


planned configuration

DWD
Automatic
File Distribution

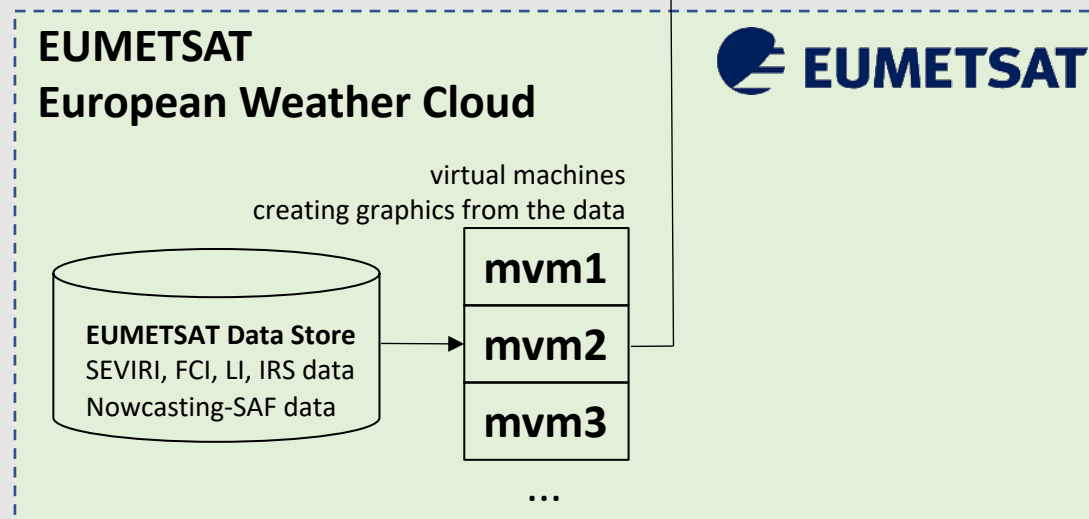
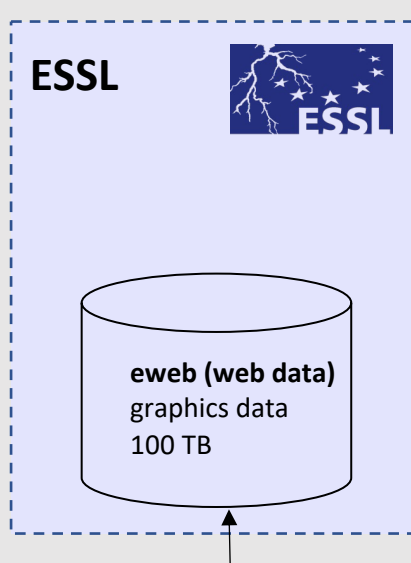
ECMWF
MARS / File Distribution

Data sources
essl@data.dwd.de
opendata.dwd.de
zamg.ac.at
NOAA



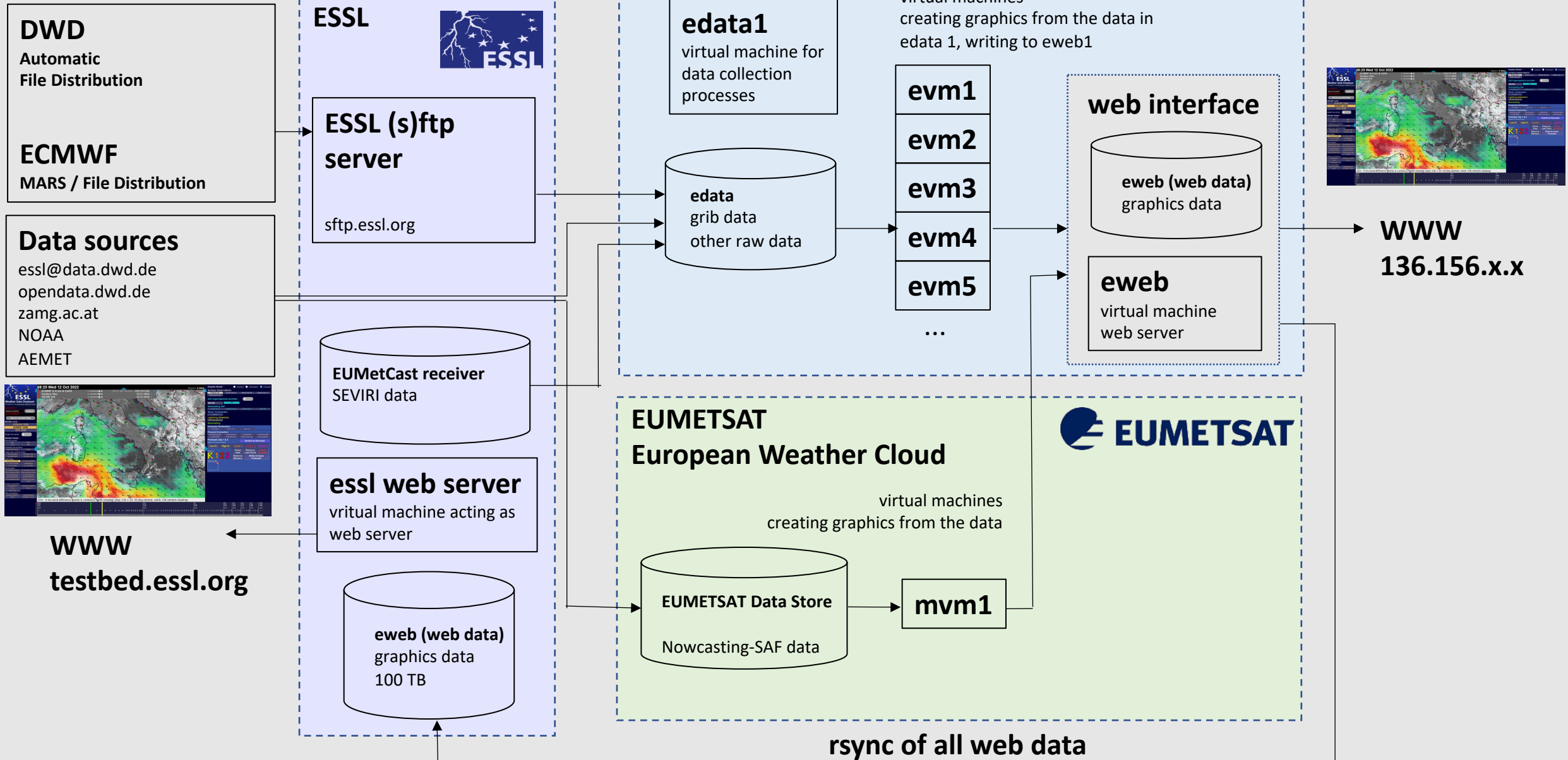
WWW

*older data stored as S3 storage,
performance to be studied



long term archive only

current configuration



Deployment/migration of **ESSL Weather Data Displayer** in the European Weather Cloud

Upcoming work:

- use (more) EUMETSAT and ECMWF data sources accessible in the cloud
 - MARS / EUMetCast Terrestrial, Data Store
 - rather than data sent to, downloaded to, or received at ESSL
 - set up near-real time Meteosat Third Generation data processing when these data become available (2023) (using SatPy)
- develop long-term archive solution for past case studies
- migration of ECMWF side to new VMs in Bologna (Q1/Q2 2023)
- offer access to weather services in ECMWF / EUMETSAT member states
- containerization