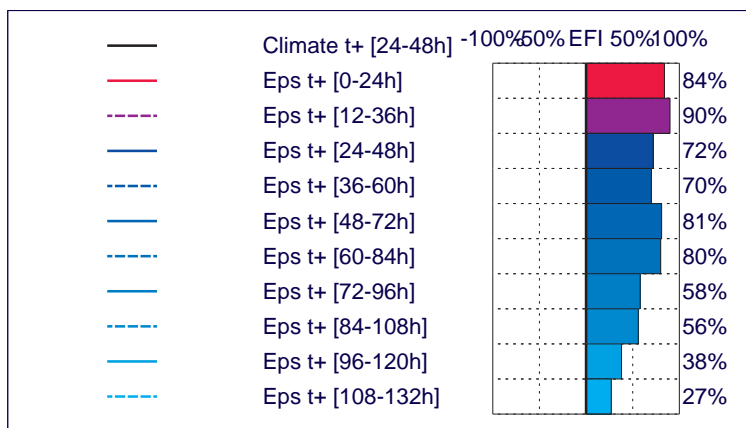
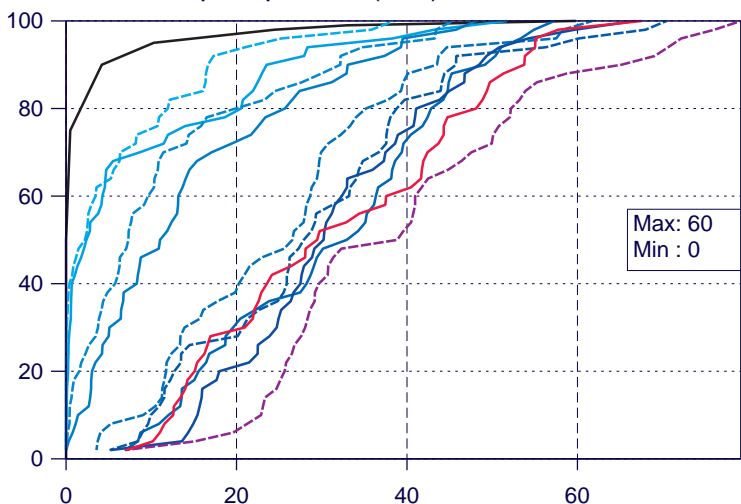
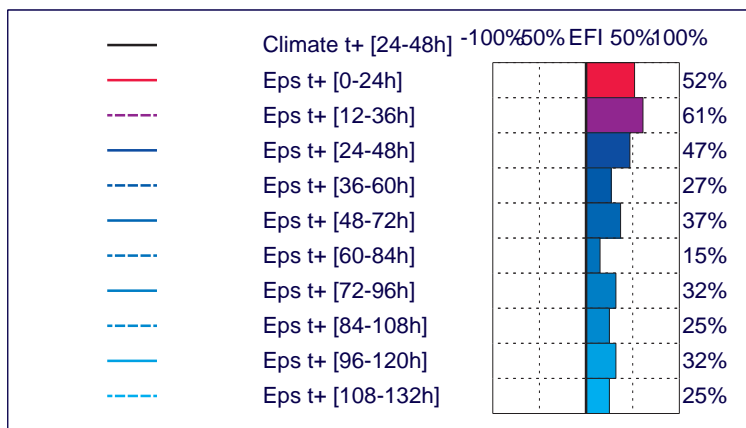
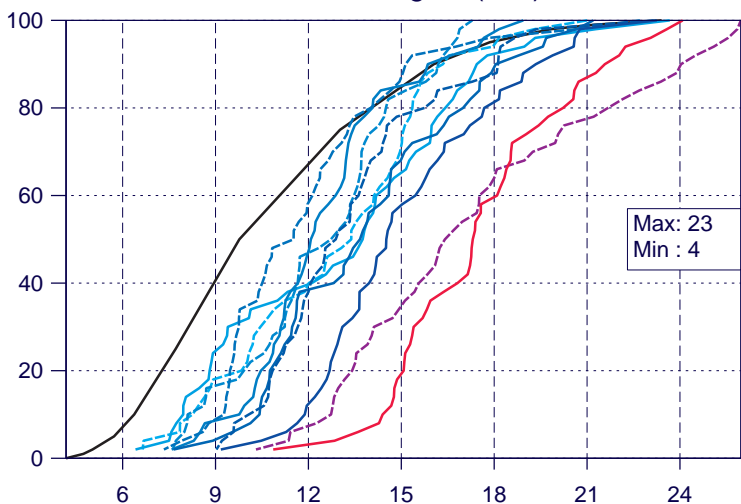


Forecast and M-Climate cumulative distribution functions with EFI values at 36.66°N/3.43°W valid for 24 hours from Friday 28 September 2012 00 UTC to Saturday 29 September 2012 00 UTC

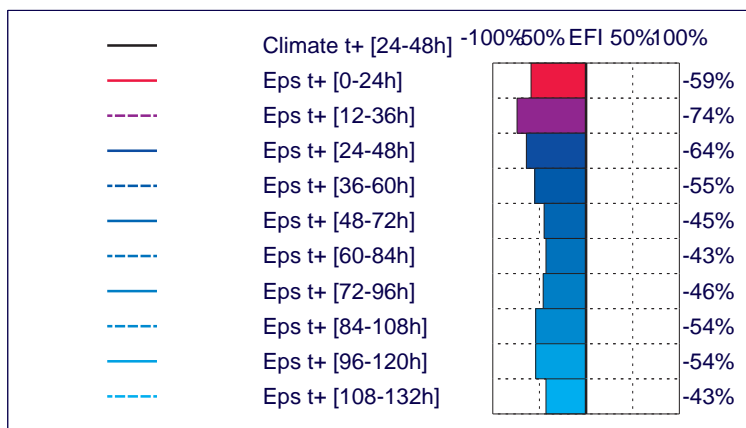
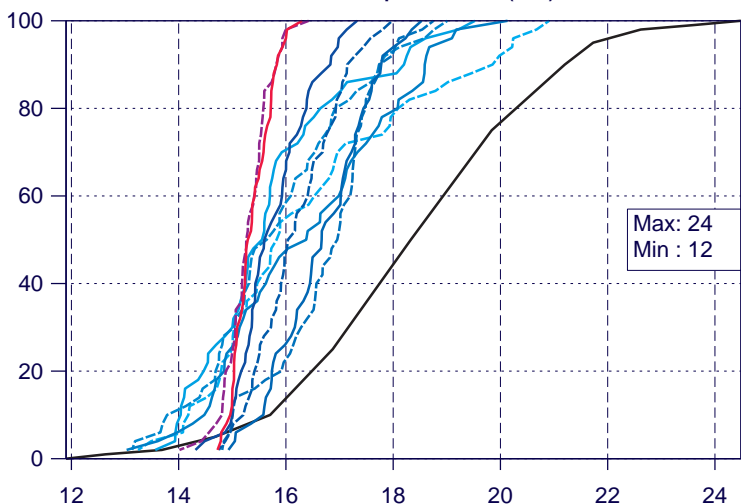
CDF for 24h precipitation (mm)



CDF for 24h maximum wind gust (m/s)



CDF for 24h mean 2m temperature (°C)



Max:
Min: 24-48h M-Climate extrema

M-Climate: this stands for "Model Climate". It is a function of lead time, date (+/- ~15 days), and model version. It is derived by rerunning a 5 member ensemble, over the last 20 years, once a week (500 realisations). M-Climate is always from the same model version as the displayed EPS data. On this page only the 24-48h lead M-Climate is displayed.