

Intercomparison of operational wave forecasting systems against  
in-situ observations: data from BoM, DMI, DWD, ECCC,  
ECMWF, JMA, LOPS, METEOAM, METFR, METNO, NCEP,  
NZMS, PRTOS, SHNSM, UKMO.

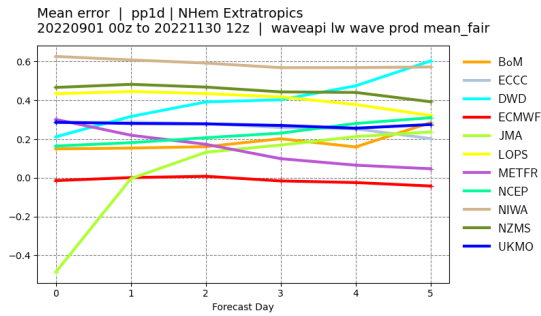
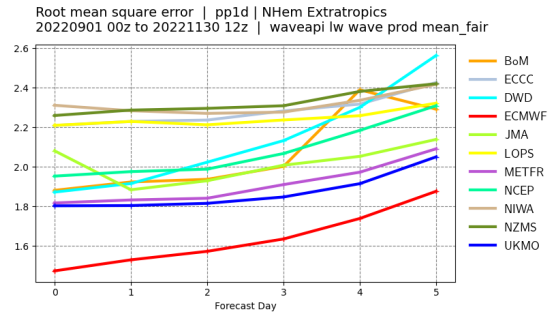
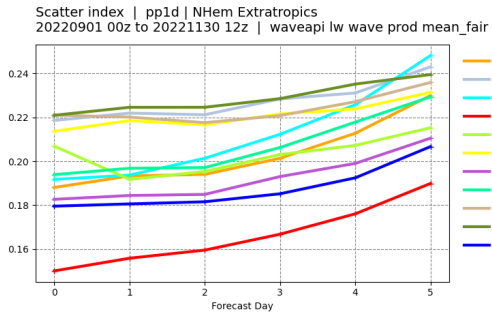
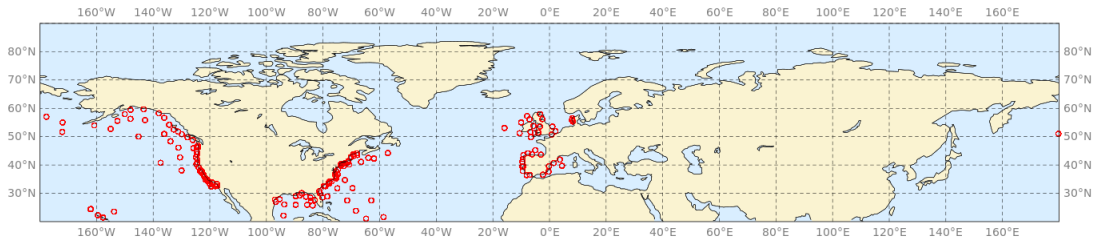
00 and 12 UTC runs

WMO Lead Centre for Wave Forecast Verification LC-WFV,  
European Centre for Medium-Range Weather Forecasts ECMWF

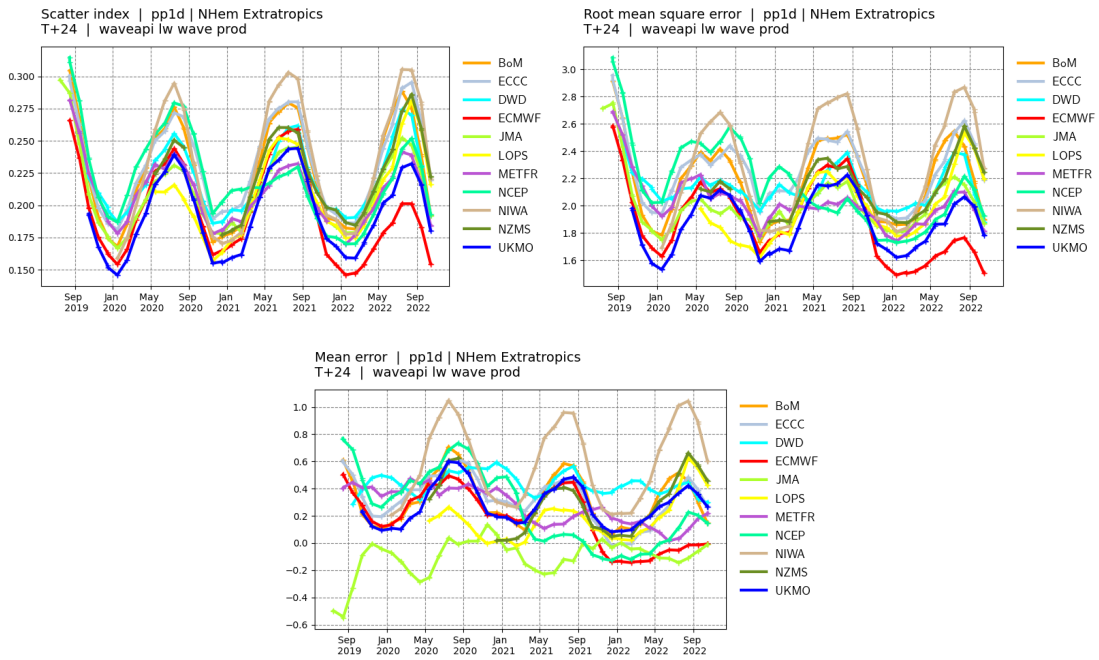
March 29, 2023

**PART II: Peak wave period (PP1D)**

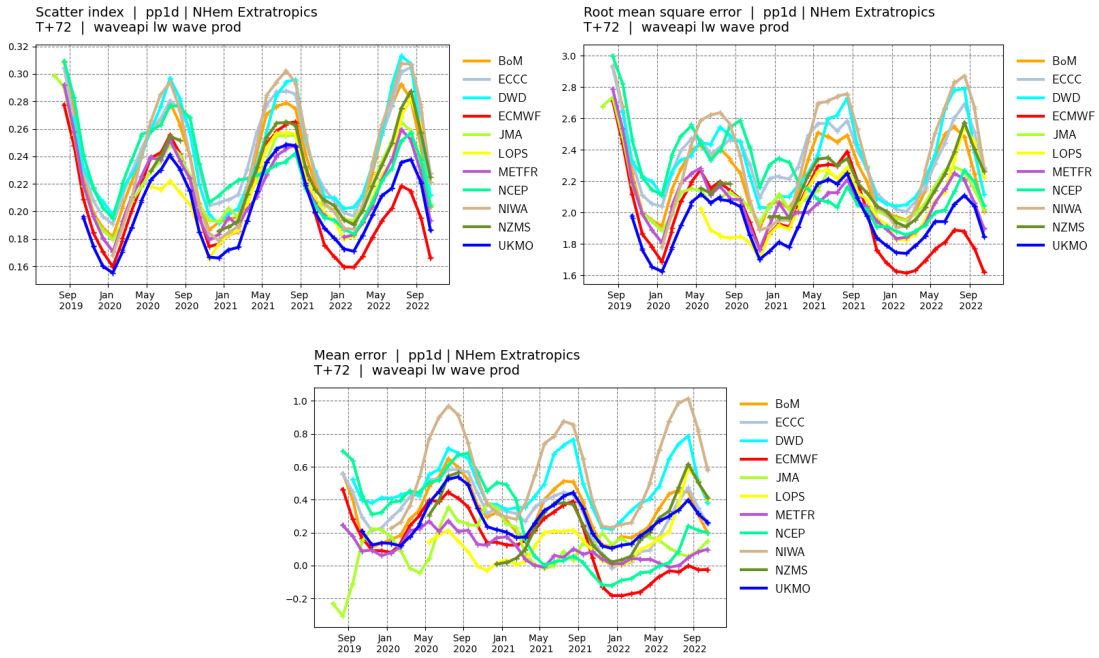
Buoys observations - from 20220901 to 20221130 - (pp1d)



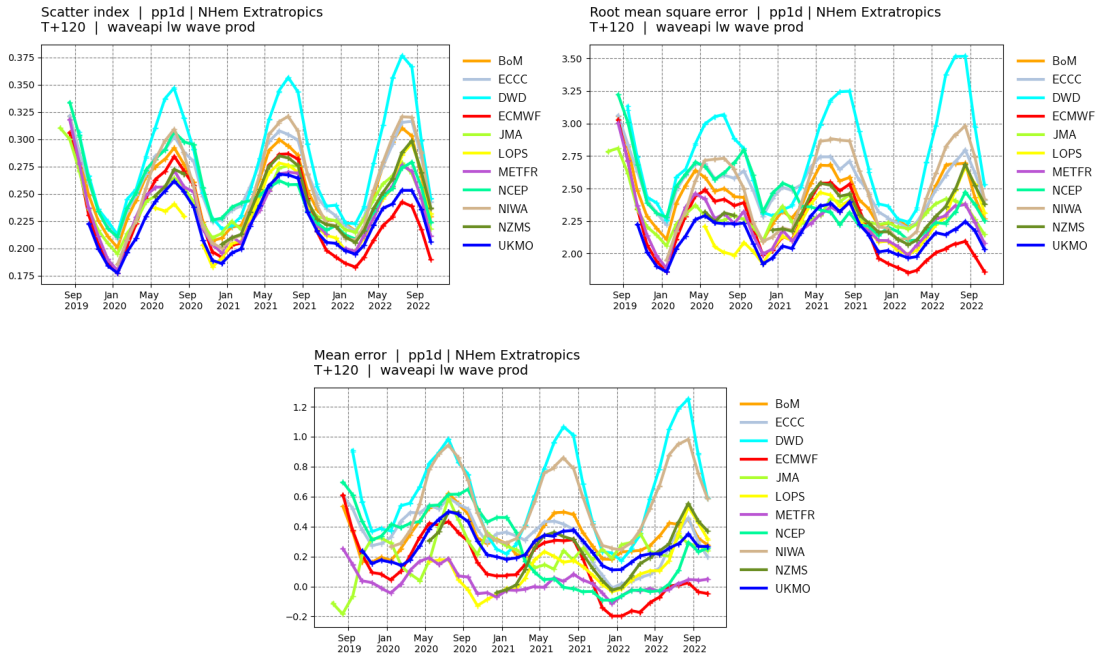
**Northern Hemisphere.** Top panel: observation distribution. Middle left panel: Forecast scatter index (standard deviation of the difference normalised by the mean of the observations). Middle right panel: Forecast root mean square error (RMSE). Bottom panel: forecast mean error (bias).



**Northern Hemisphere.** Scores time-series at **day 1**. Top left panel: Forecast scatter index (standard deviation of the difference normalised by the mean of the observations). Top right panel: Forecast root mean square error (RMSE). Bottom panel: forecast mean error (bias).

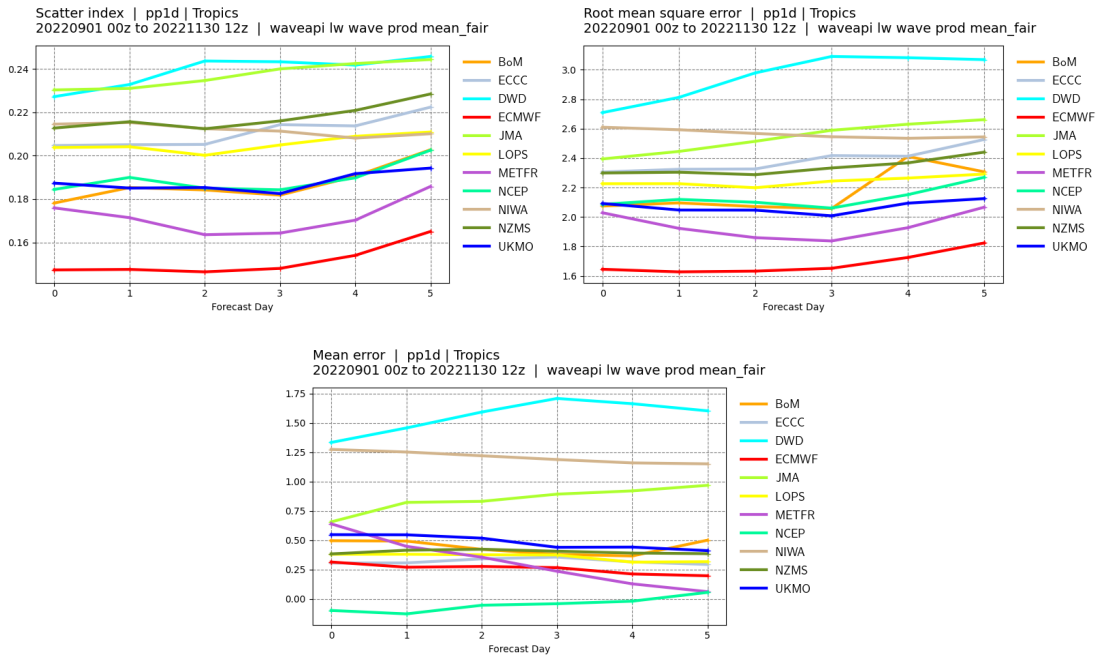
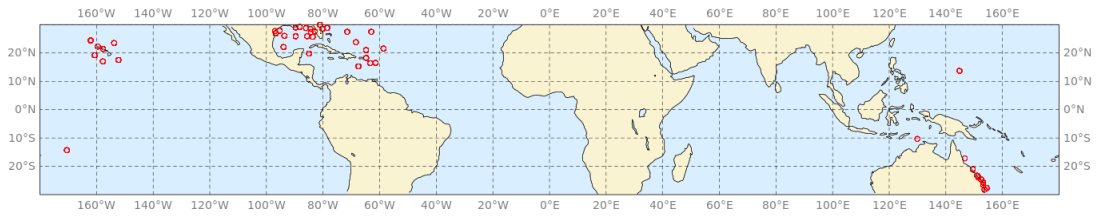


**Northern Hemisphere.** Scores time-series at **day 3**. Top left panel: Forecast scatter index (standard deviation of the difference normalised by the mean of the observations). Top right panel: Forecast root mean square error (RMSE). Bottom panel: forecast mean error (bias).

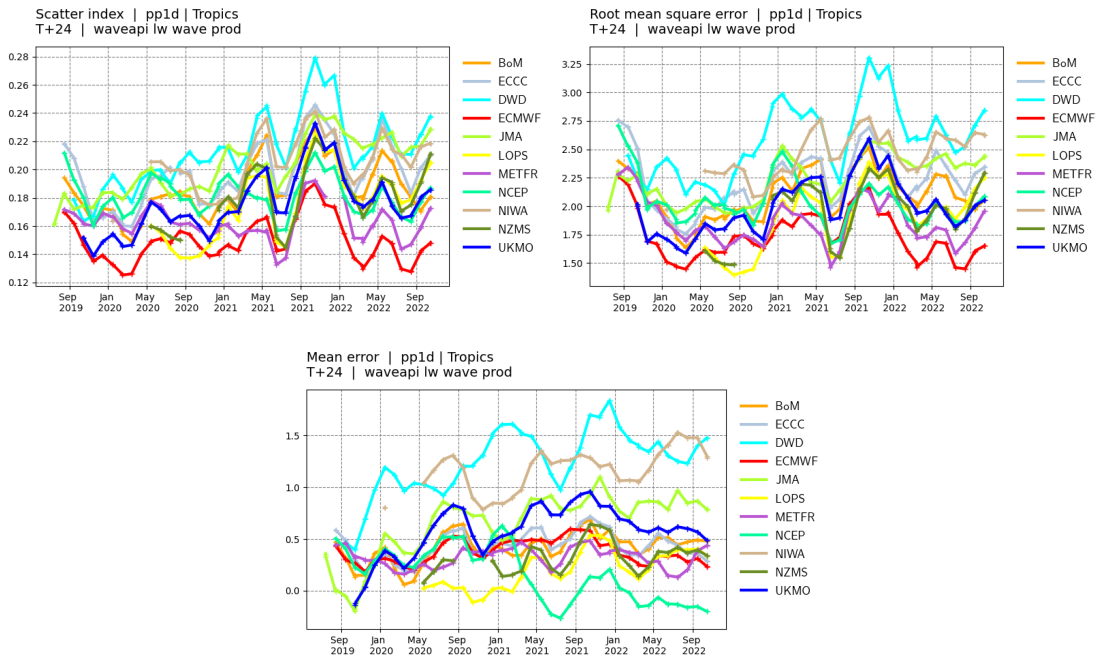


**Northern Hemisphere.** Scores time-series at **day 5**. Top left panel: Forecast scatter index (standard deviation of the difference normalised by the mean of the observations). Top right panel: Forecast root mean square error (RMSE). Bottom panel: forecast mean error (bias).

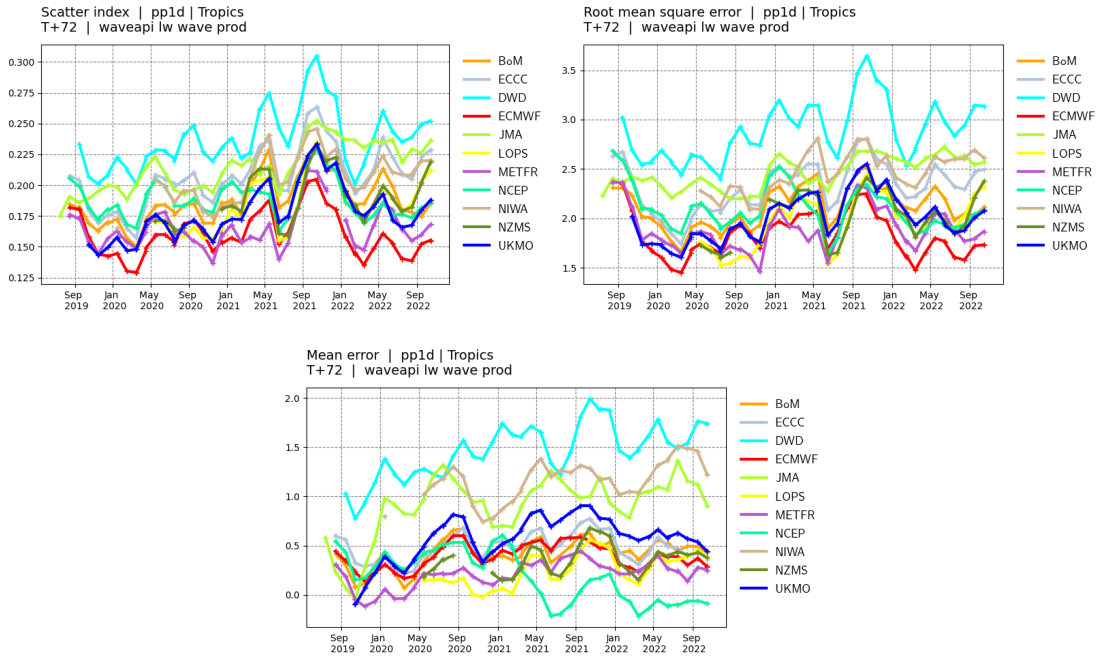
Buoys observations - from 20220901 to 20221130 - (pp1d)



**Tropics.** Top panel: observation distribution. Middle left panel: Forecast scatter index (standard deviation of the difference normalised by the mean of the observations). Middle right panel: Forecast root mean square error (RMSE). Bottom panel: forecast mean error (bias).

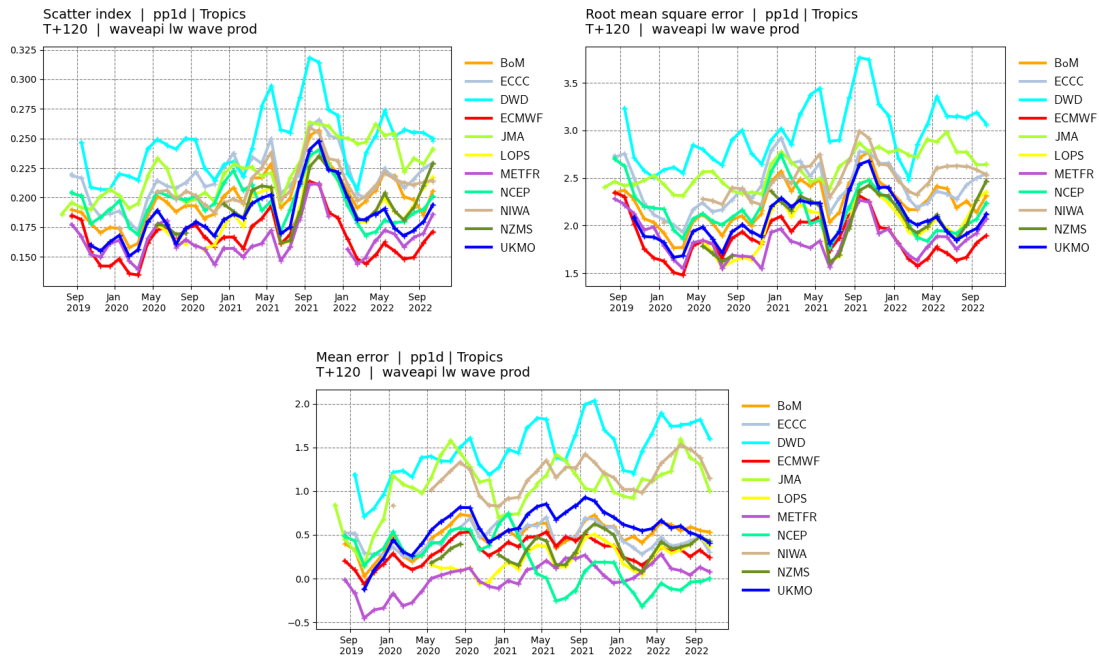


**Tropics.** Scores time-series at **day 1**. Top left panel: Forecast scatter index (standard deviation of the difference normalised by the mean of the observations). Top right panel: Forecast root mean square error (RMSE). Bottom panel: forecast mean error (bias).



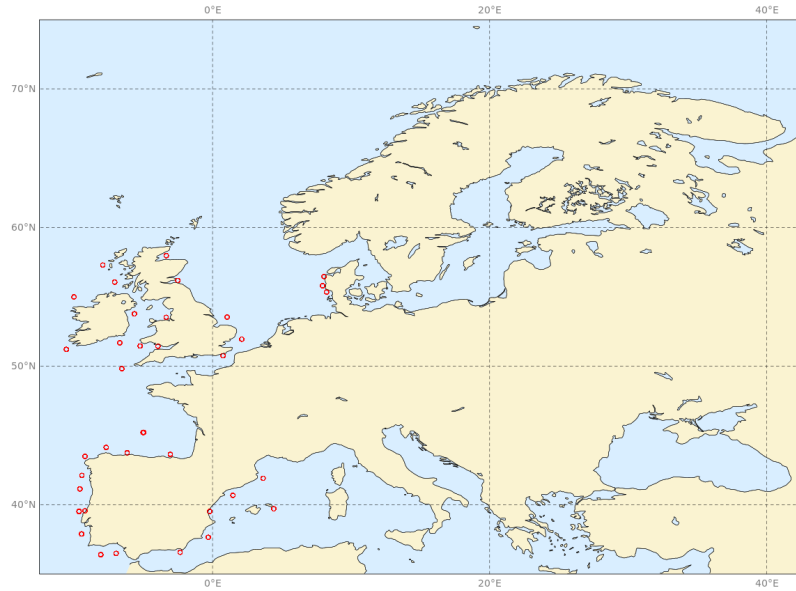
**Tropics.** Scores time-series at **day 3**. Top left panel: Forecast scatter index (standard deviation of the difference normalised by the mean of the observations). Top right panel: Forecast root mean square error (RMSE). Bottom panel: forecast mean error (bias).



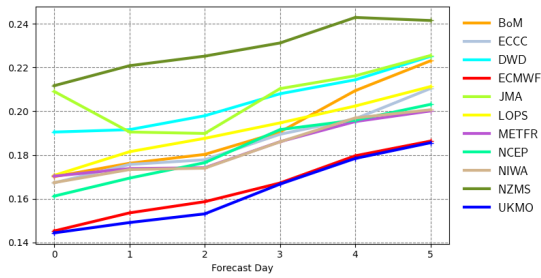


**Tropics.** Scores time-series at **day 5**. Top left panel: Forecast scatter index (standard deviation of the difference normalised by the mean of the observations). Top right panel: Forecast root mean square error (RMSE). Bottom panel: forecast mean error (bias).

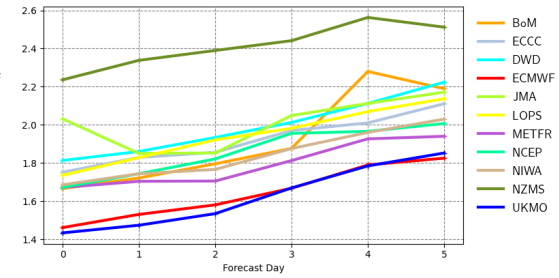
Buoys observations - from 20220901 to 20221130 - (pp1d)



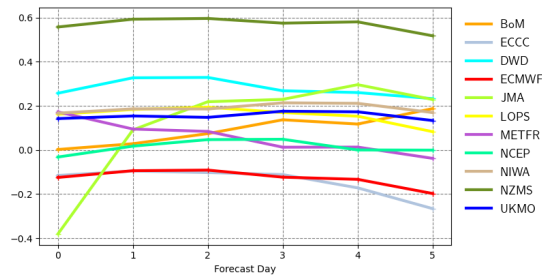
Scatter index | pp1d | Europe  
20220901 00z to 20221130 12z | waveapi lw wave prod mean\_fair



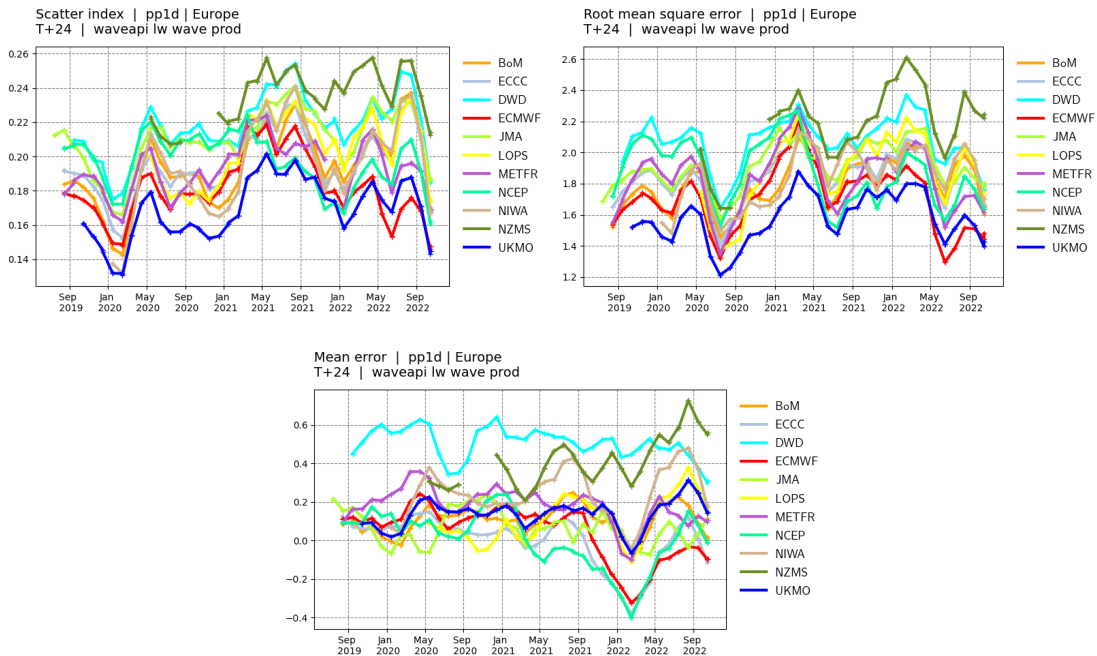
Root mean square error | pp1d | Europe  
20220901 00z to 20221130 12z | waveapi lw wave prod mean\_fair



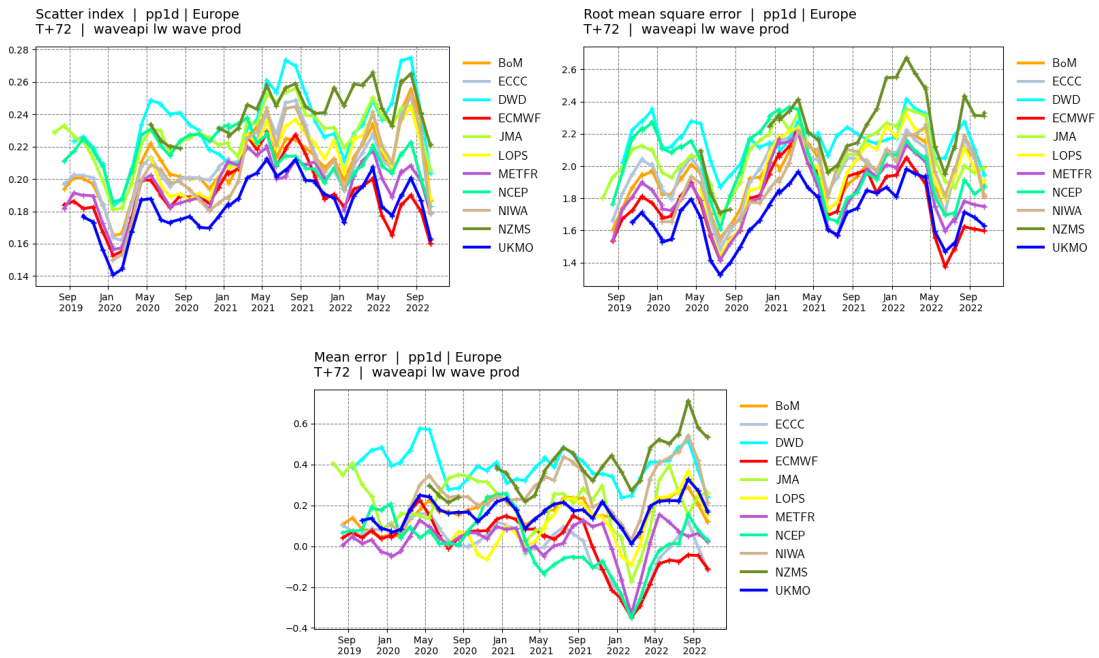
Mean error | pp1d | Europe  
20220901 00z to 20221130 12z | waveapi lw wave prod mean\_fair



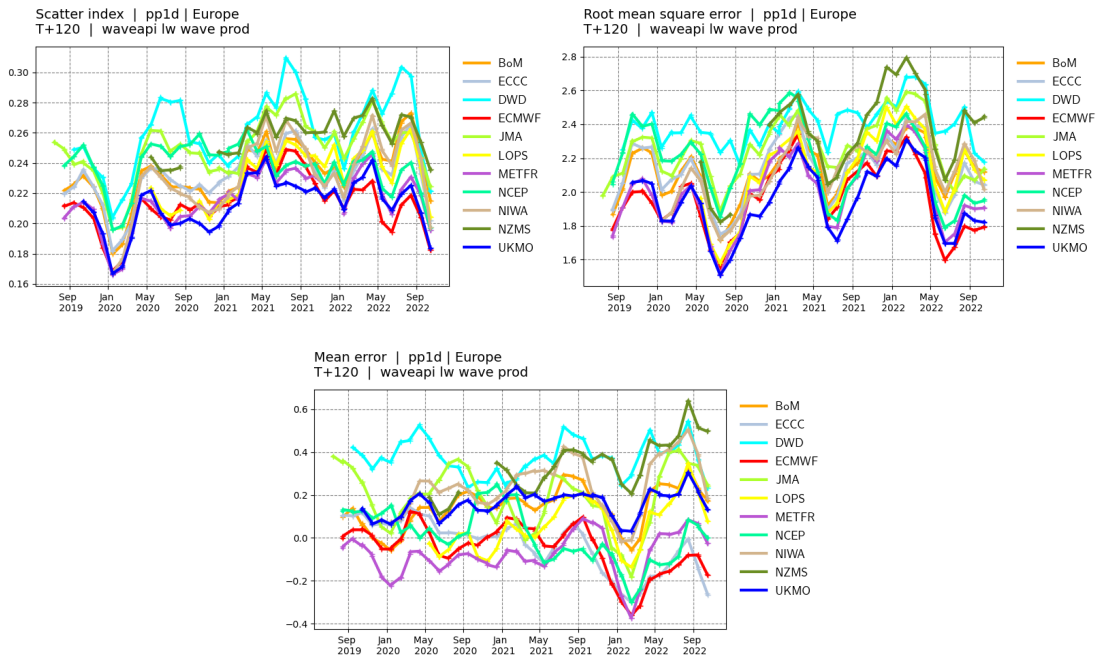
**Europe.** Top panel: observation distribution. Middle left panel: Forecast scatter index (standard deviation of the difference normalised by the mean of the observations). Middle right panel: Forecast root mean square error (RMSE). Bottom panel: forecast mean error (bias).



**Europe.** Scores time-series at **day 1**. Top left panel: Forecast scatter index (standard deviation of the difference normalised by the mean of the observations). Top right panel: Forecast root mean square error (RMSE). Bottom panel: forecast mean error (bias).



**Europe.** Scores time-series at **day 3**. Top left panel: Forecast scatter index (standard deviation of the difference normalised by the mean of the observations). Top right panel: Forecast root mean square error (RMSE). Bottom panel: forecast mean error (bias).

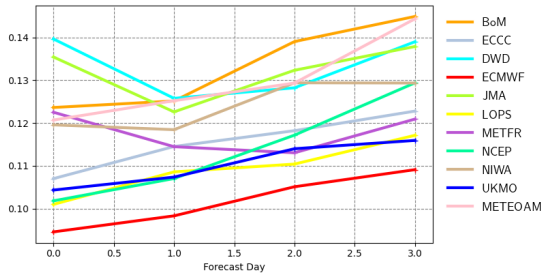


**Europe.** Scores time-series at **day 5**. Top left panel: Forecast scatter index (standard deviation of the difference normalised by the mean of the observations). Top right panel: Forecast root mean square error (RMSE). Bottom panel: forecast mean error (bias).

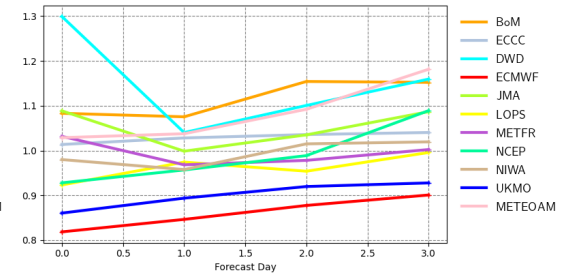
Buoys observations - from 20220901 to 20221130 - (pp1d)



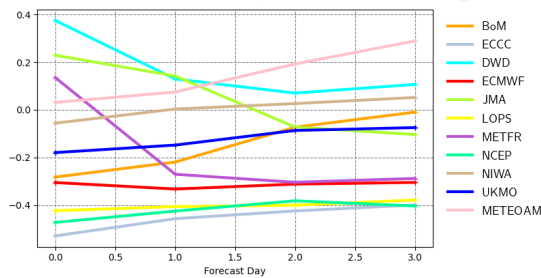
Scatter index | pp1d | Mediterranean  
20220901 00z to 20221130 12z | waveapi lw wave prod mean\_fair



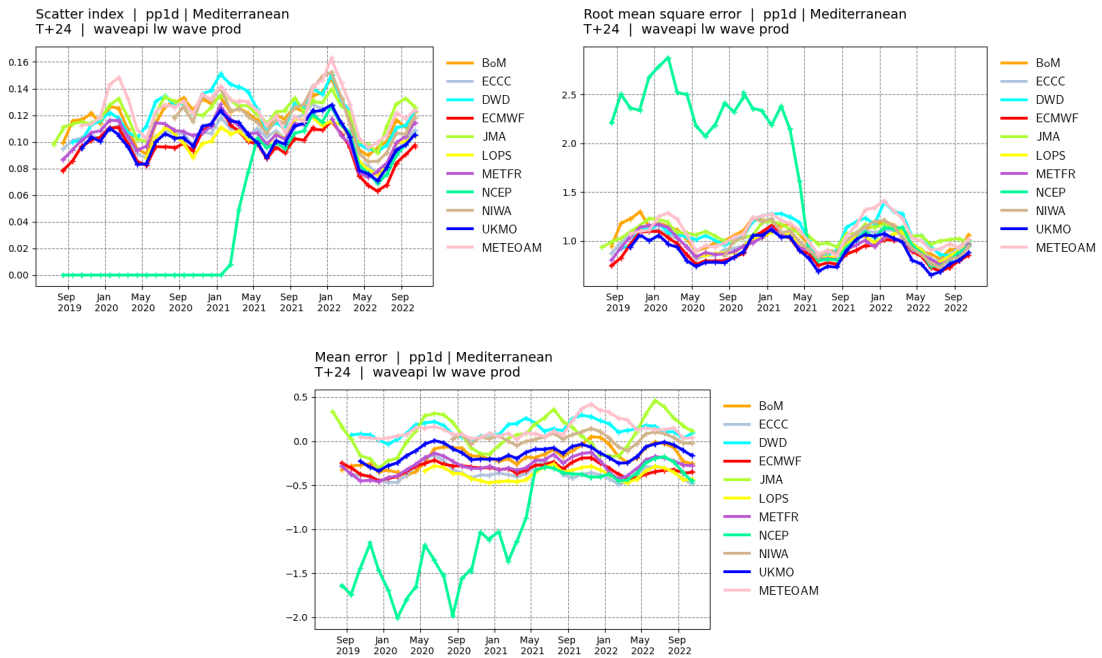
Root mean square error | pp1d | Mediterranean  
20220901 00z to 20221130 12z | waveapi lw wave prod mean\_fair



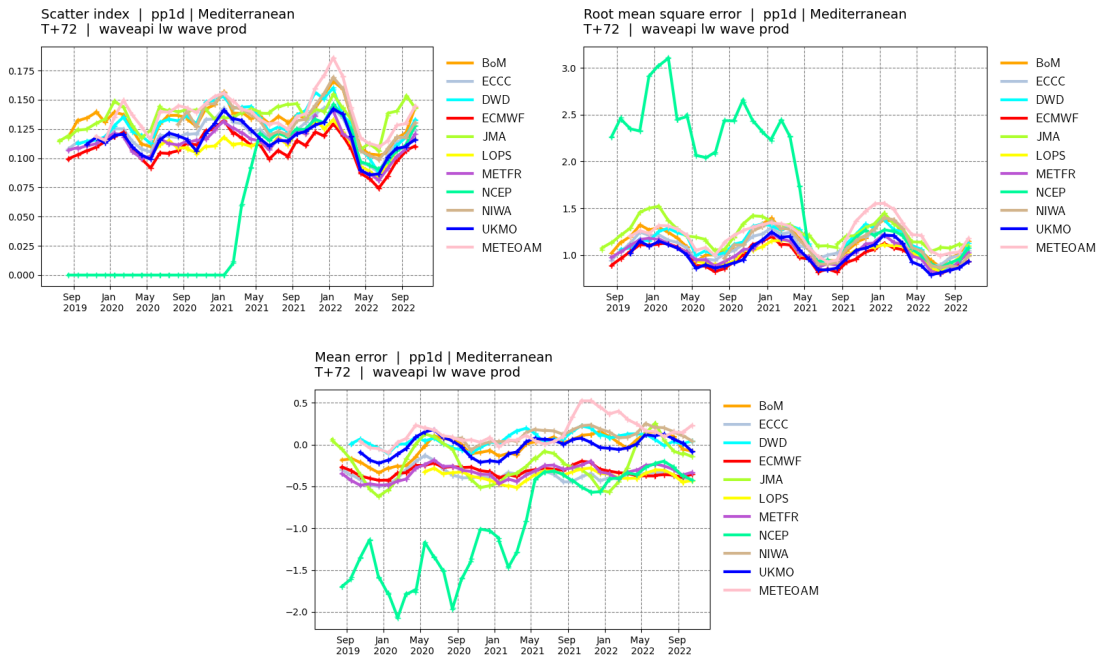
Mean error | pp1d | Mediterranean  
20220901 00z to 20221130 12z | waveapi lw wave prod mean\_fair



**Mediterranean Sea.** Top panel: observation distribution. Middle left panel: Forecast scatter index (standard deviation of the difference normalised by the mean of the observations). Middle right panel: Forecast root mean square error (RMSE). Bottom panel: forecast mean error (bias).

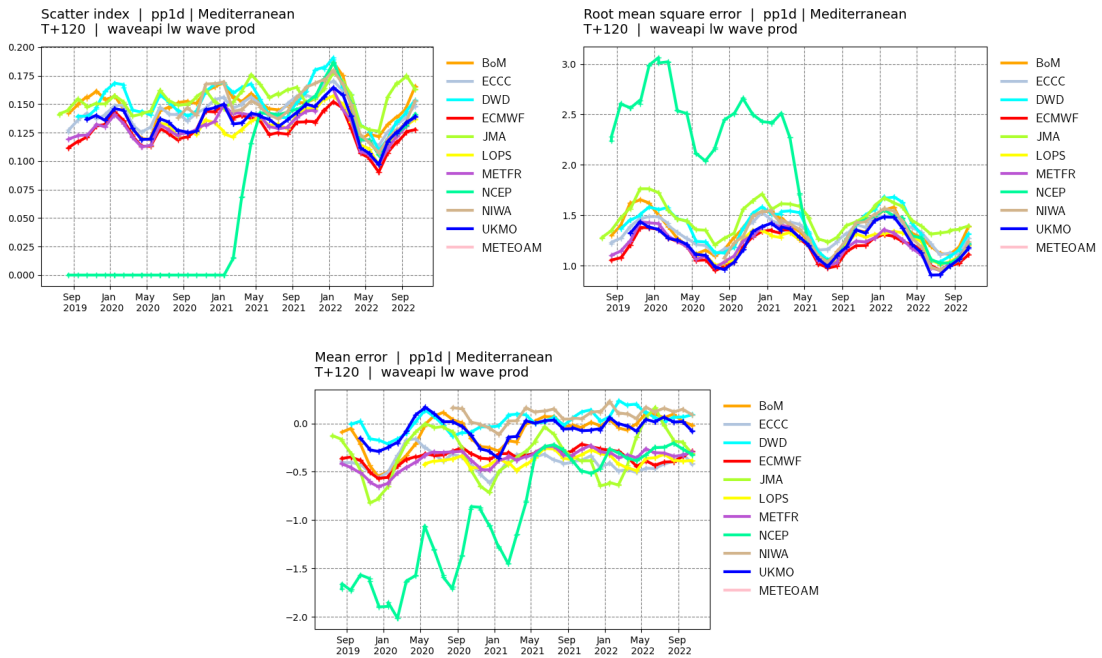


**Mediterranean Sea.** Scores time-series at **day 1**. Top left panel: Forecast scatter index (standard deviation of the difference normalised by the mean of the observations). Top right panel: Forecast root mean square error (RMSE). Bottom panel: forecast mean error (bias).



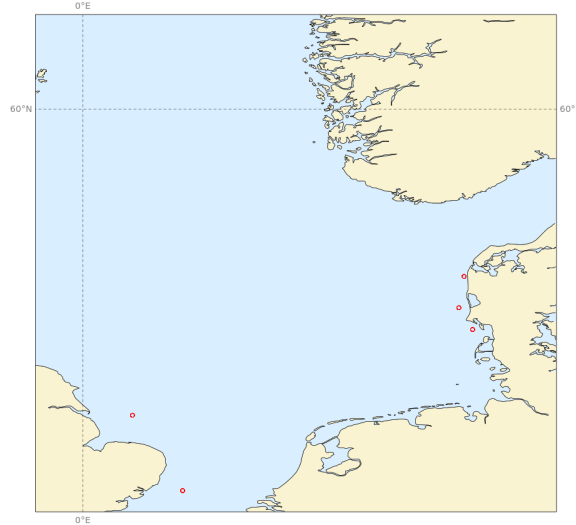
**Mediterranean Sea.** Scores time-series at **day 3**. Top left panel: Forecast scatter index (standard deviation of the difference normalised by the mean of the observations). Top right panel: Forecast root mean square error (RMSE). Bottom panel: forecast mean error (bias).



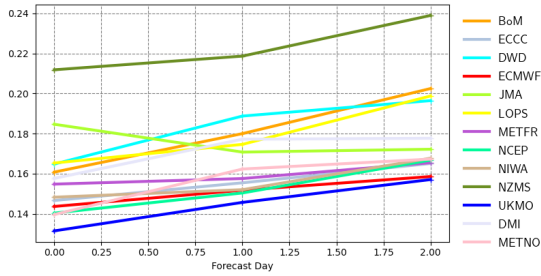


**Mediterranean Sea.** Scores time-series at **day 5**. Top left panel: Forecast scatter index (standard deviation of the difference normalised by the mean of the observations). Top right panel: Forecast root mean square error (RMSE). Bottom panel: forecast mean error (bias).

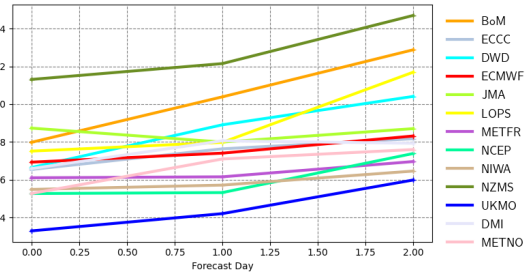
Buoys observations - from 20220901 to 20221130 - (pp1d)



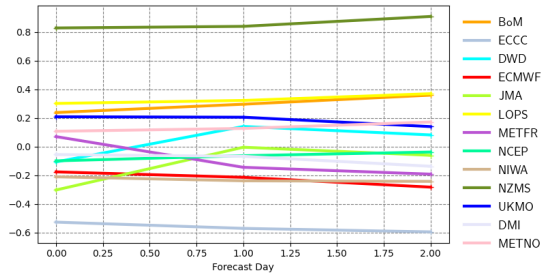
Scatter index | pp1d | North Sea  
20220901 00z to 20221130 12z | waveapi lw wave prod mean\_fair



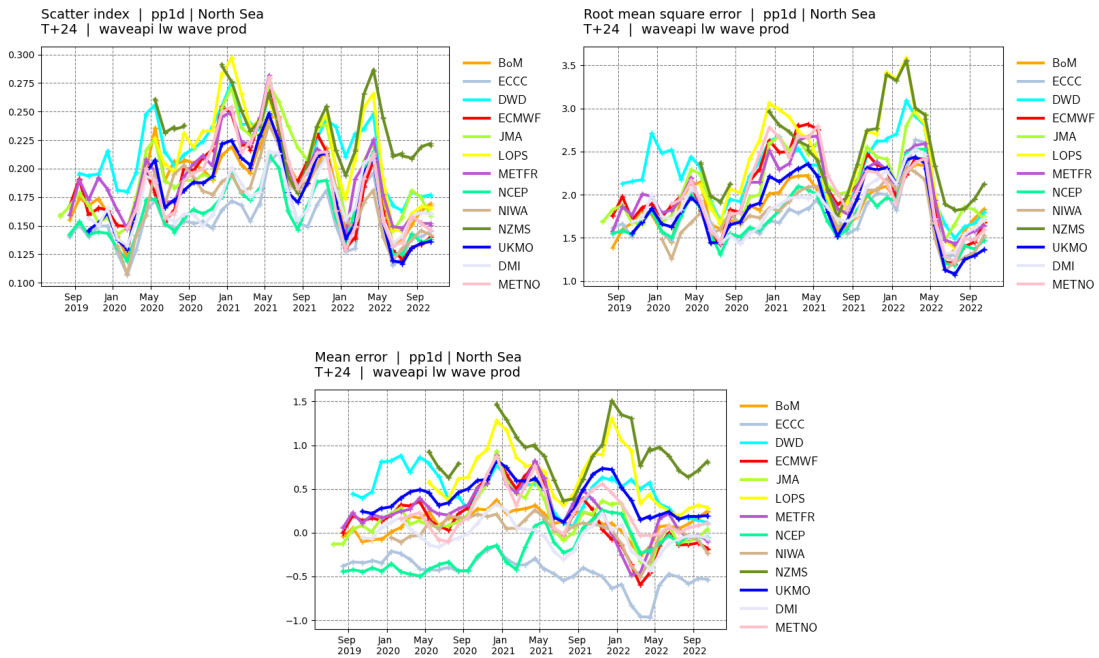
Root mean square error | pp1d | North Sea  
20220901 00z to 20221130 12z | waveapi lw wave prod mean\_fair



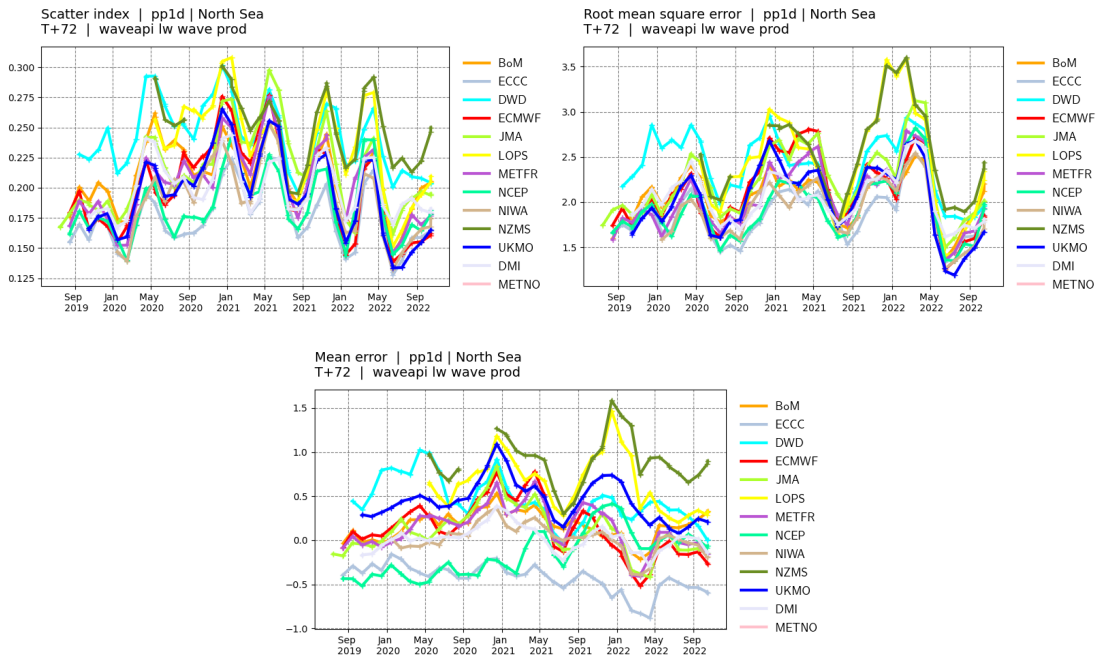
Mean error | pp1d | North Sea  
20220901 00z to 20221130 12z | waveapi lw wave prod mean\_fair



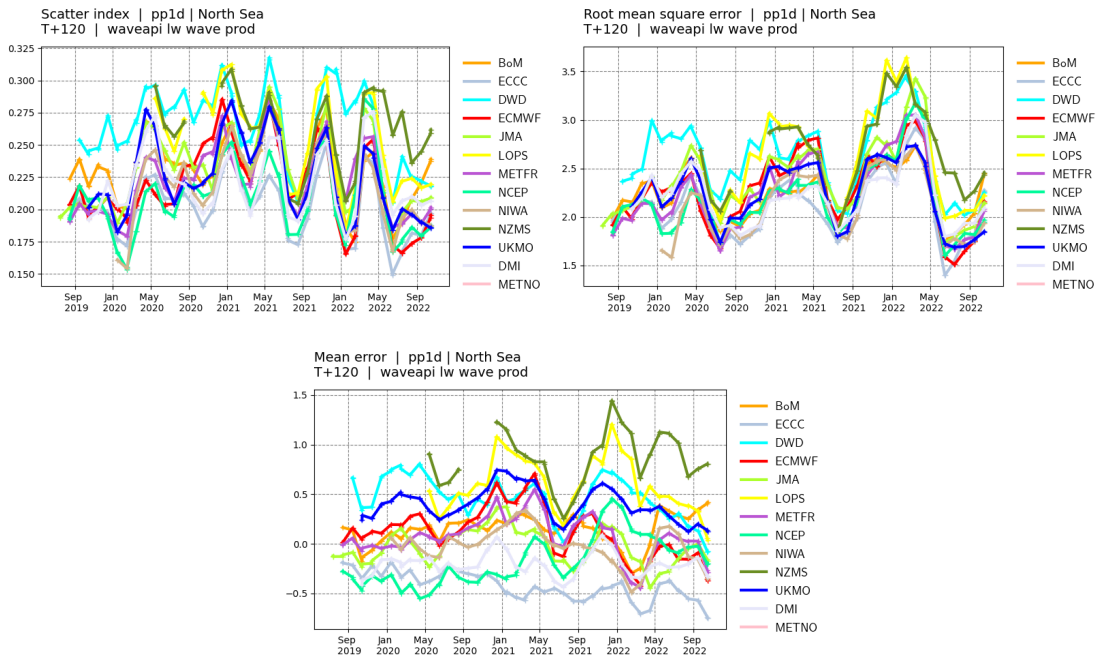
**North Sea.** Top panel: observation distribution. Middle left panel: Forecast scatter index (standard deviation of the difference normalised by the mean of the observations). Middle right panel: Forecast root mean square error (RMSE). Bottom panel: forecast mean error (bias).



**North Sea.** Scores time-series at **day 1**. Top left panel: Forecast scatter index (standard deviation of the difference normalised by the mean of the observations). Top right panel: Forecast root mean square error (RMSE). Bottom panel: forecast mean error (bias).

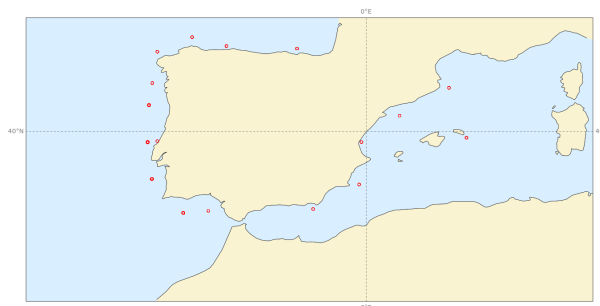


**North Sea.** Scores time-series at **day 3**. Top left panel: Forecast scatter index (standard deviation of the difference normalised by the mean of the observations). Top right panel: Forecast root mean square error (RMSE). Bottom panel: forecast mean error (bias).

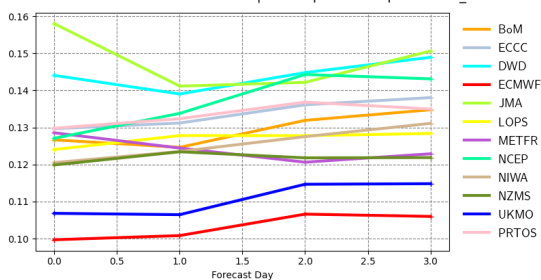


**North Sea.** Scores time-series at **day 5**. Top left panel: Forecast scatter index (standard deviation of the difference normalised by the mean of the observations). Top right panel: Forecast root mean square error (RMSE). Bottom panel: forecast mean error (bias).

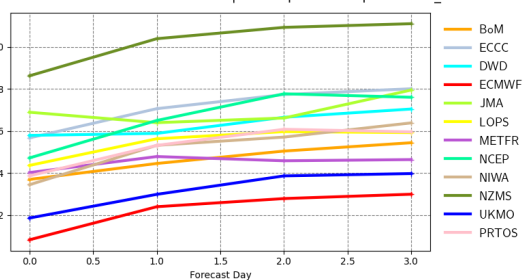
Buoys observations - from 20220901 to 20221130 - (pp1d)



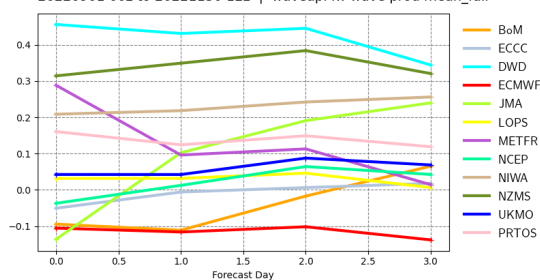
Scatter index | pp1d | SW Europe  
20220901 00z to 20221130 12z | waveapi lw wave prod mean\_fair



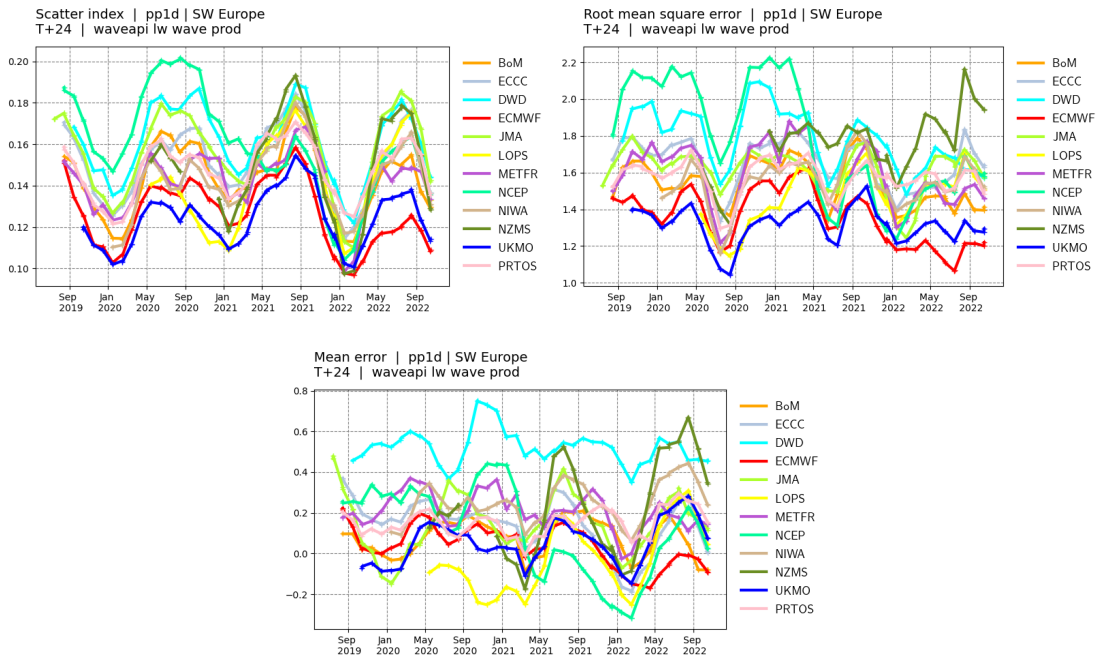
Root mean square error | pp1d | SW Europe  
20220901 00z to 20221130 12z | waveapi lw wave prod mean\_fair



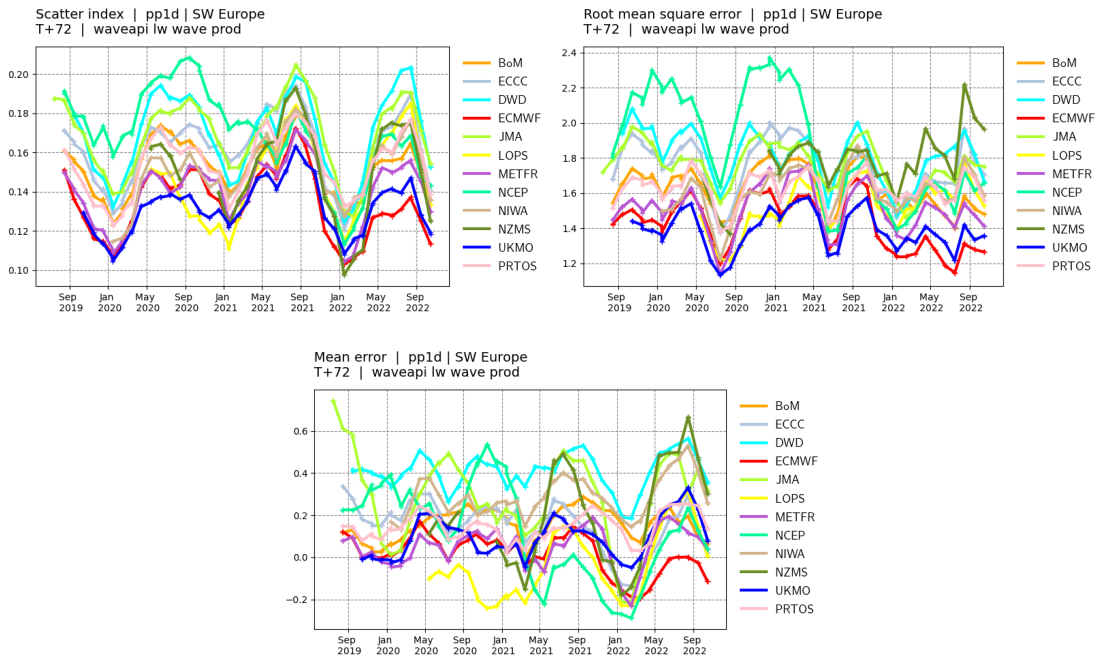
Mean error | pp1d | SW Europe  
20220901 00z to 20221130 12z | waveapi lw wave prod mean\_fair



**South West Europe.** Top panel: observation distribution. Middle left panel: Forecast scatter index (standard deviation of the difference normalised by the mean of the observations). Middle right panel: Forecast root mean square error (RMSE). Bottom panel: forecast mean error (bias).

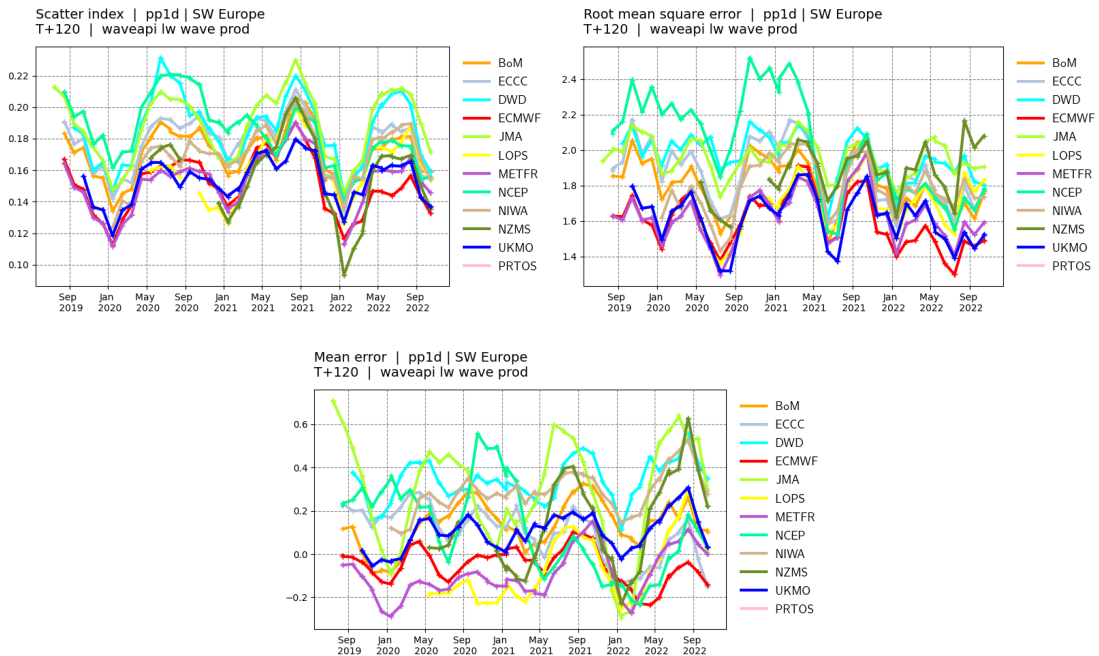


**South West Europe.** Scores time-series at **day 1**. Top left panel: Forecast scatter index (standard deviation of the difference normalised by the mean of the observations). Top right panel: Forecast root mean square error (RMSE). Bottom panel: forecast mean error (bias).



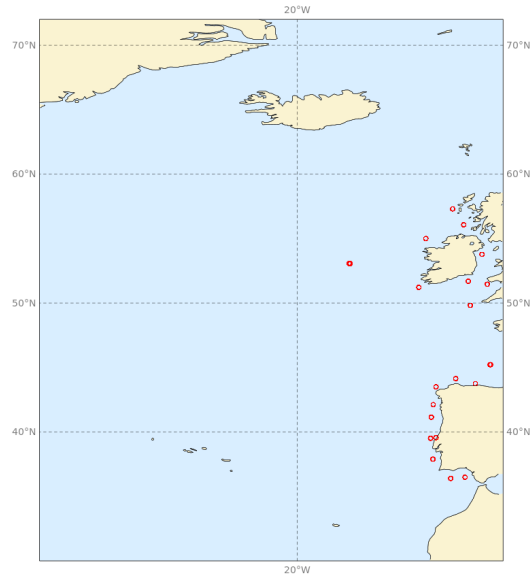
**South West Europe.** Scores time-series at **day 3**. Top left panel: Forecast scatter index (standard deviation of the difference normalised by the mean of the observations). Top right panel: Forecast root mean square error (RMSE). Bottom panel: forecast mean error (bias).



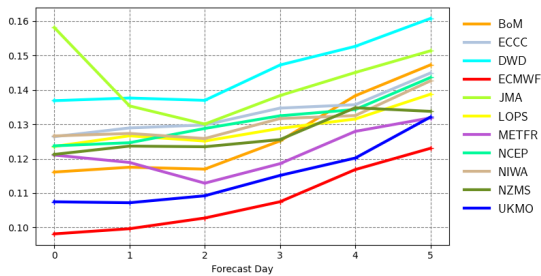


**South West Europe.** Scores time-series at **day 5**. Top left panel: Forecast scatter index (standard deviation of the difference normalised by the mean of the observations). Top right panel: Forecast root mean square error (RMSE). Bottom panel: forecast mean error (bias).

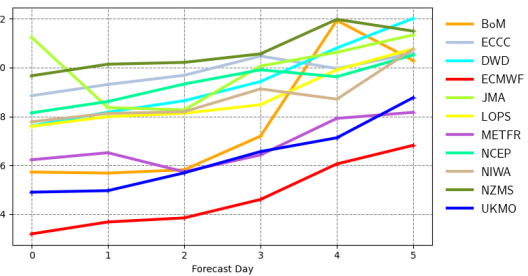
Buoys observations - from 20220901 to 20221130 - (pp1d)



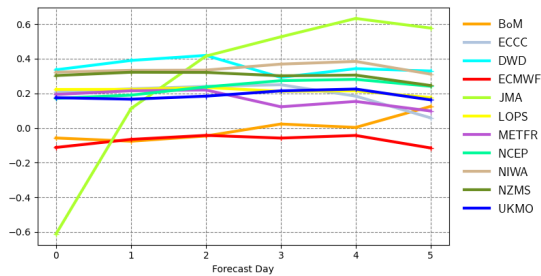
Scatter index | pp1d | North East Atlantic  
20220901 00z to 20221130 12z | waveapi lw wave prod mean\_fair



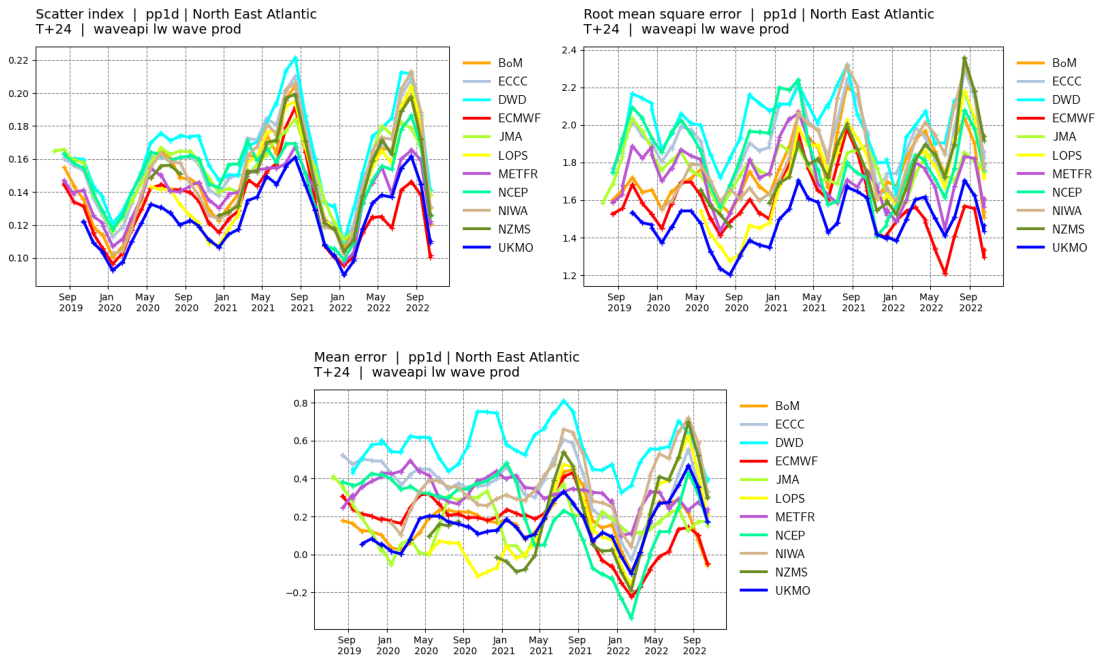
Root mean square error | pp1d | North East Atlantic  
20220901 00z to 20221130 12z | waveapi lw wave prod mean\_fair



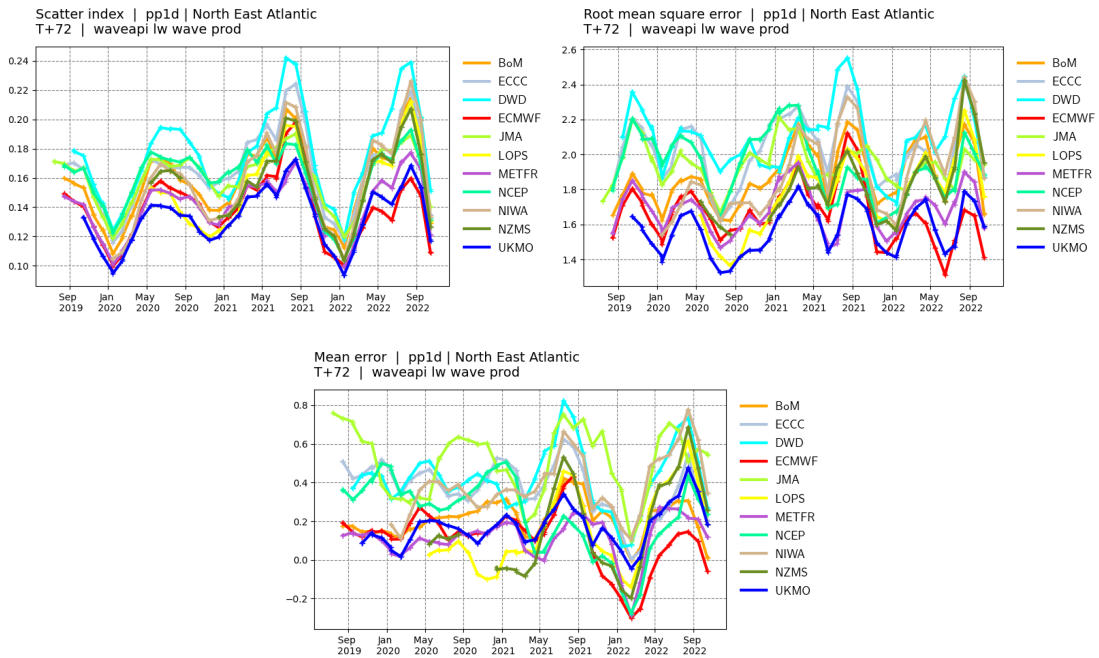
Mean error | pp1d | North East Atlantic  
20220901 00z to 20221130 12z | waveapi lw wave prod mean\_fair



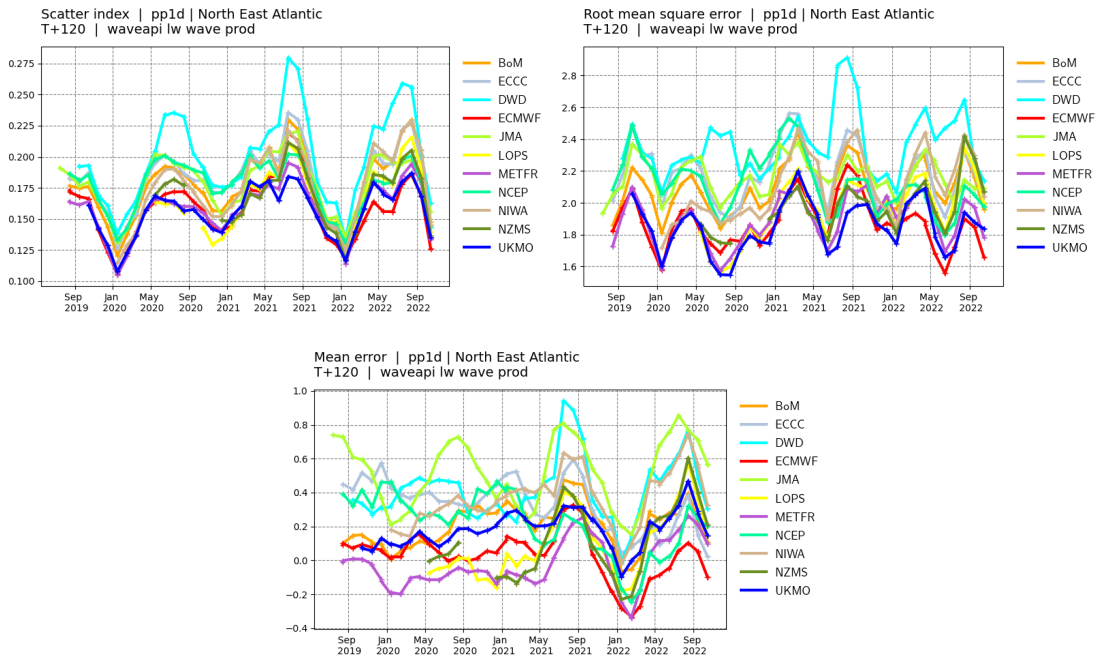
**North East Atlantic.** Top panel: observation distribution. Middle left panel: Forecast scatter index (standard deviation of the difference normalised by the mean of the observations). Middle right panel: Forecast root mean square error (RMSE). Bottom panel: forecast mean error (bias).



**North East Atlantic.** Scores time-series at **day 1**. Top left panel: Forecast scatter index (standard deviation of the difference normalised by the mean of the observations). Top right panel: Forecast root mean square error (RMSE). Bottom panel: forecast mean error (bias).

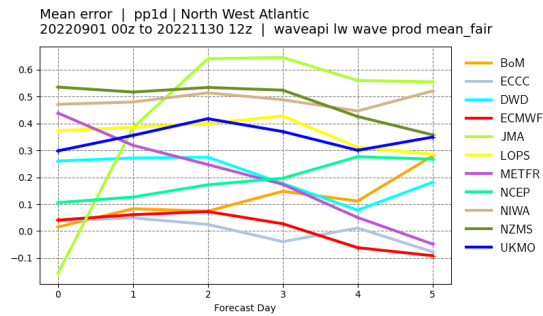
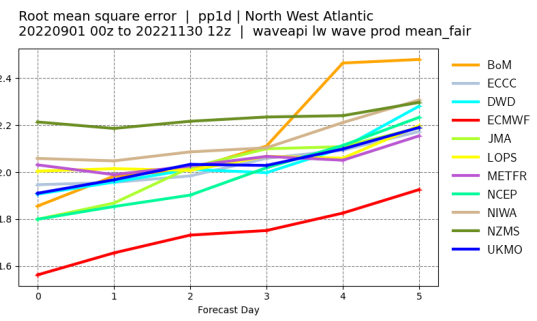
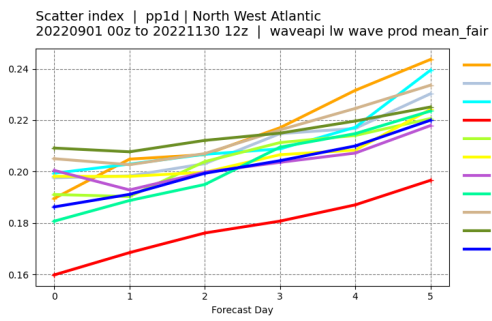
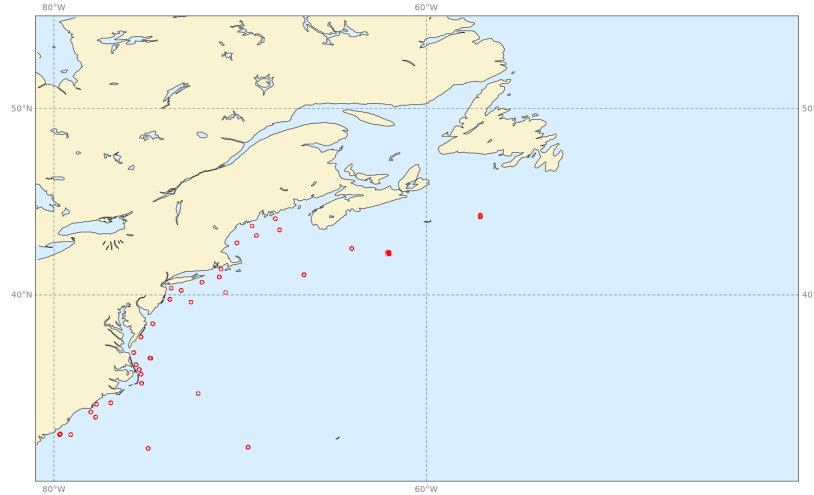


**North East Atlantic.** Scores time-series at **day 3**. Top left panel: Forecast scatter index (standard deviation of the difference normalised by the mean of the observations). Top right panel: Forecast root mean square error (RMSE). Bottom panel: forecast mean error (bias).

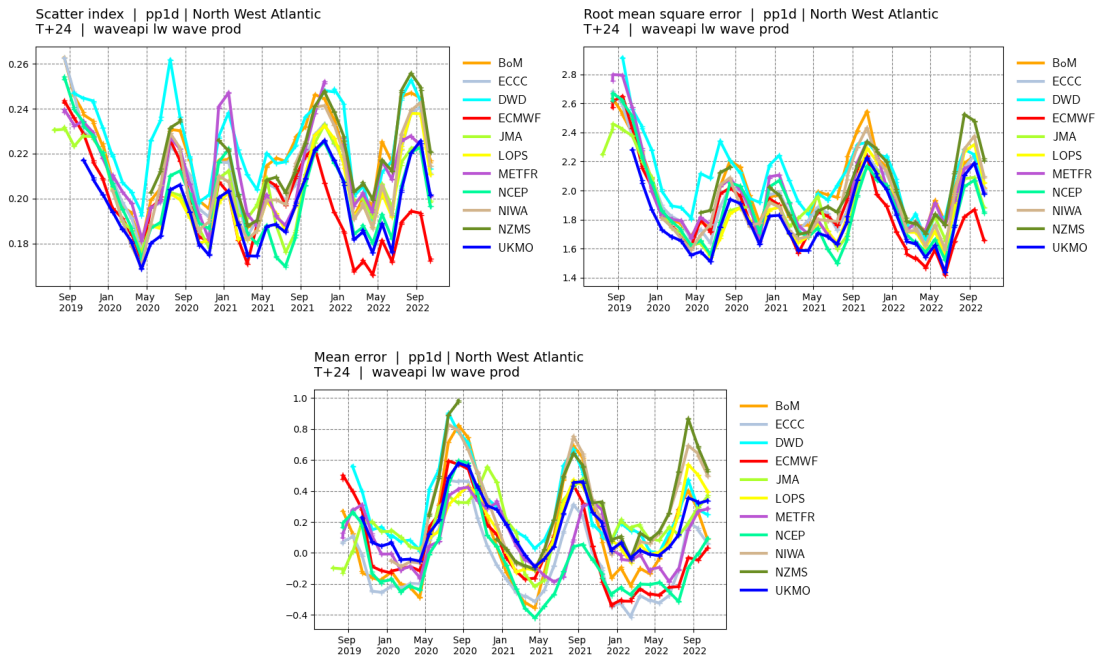


**North East Atlantic.** Scores time-series at **day 5**. Top left panel: Forecast scatter index (standard deviation of the difference normalised by the mean of the observations). Top right panel: Forecast root mean square error (RMSE). Bottom panel: forecast mean error (bias).

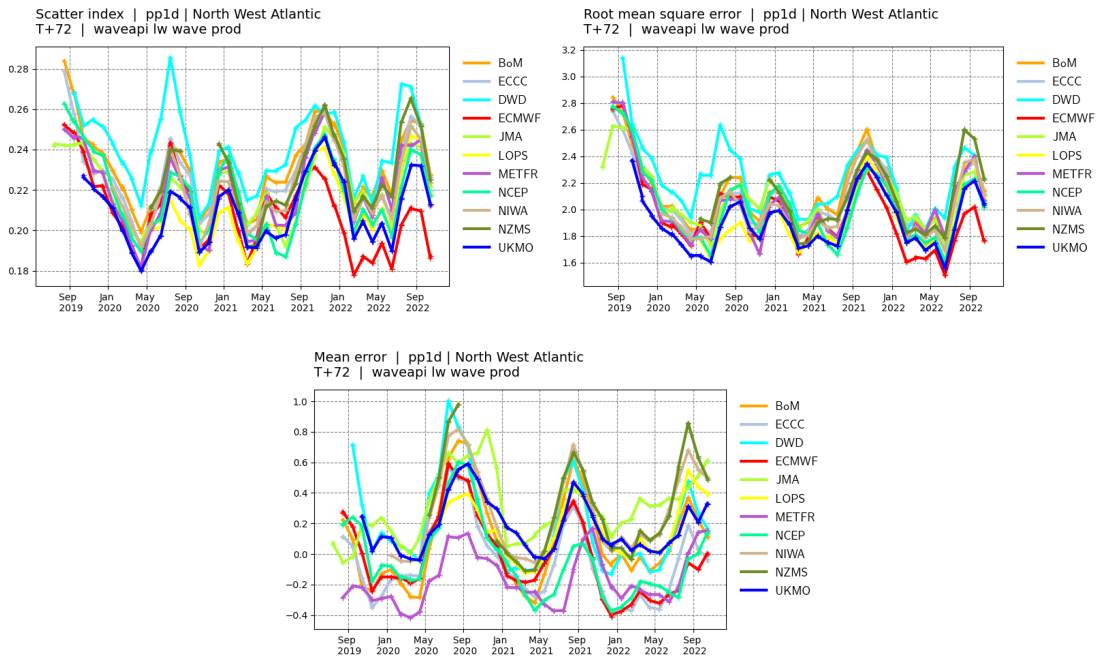
Buoys observations - from 20220901 to 20221130 - (pp1d)



**North West Atlantic.** Top panel: observation distribution. Middle left panel: Forecast scatter index (standard deviation of the difference normalised by the mean of the observations). Middle right panel: Forecast root mean square error (RMSE). Bottom panel: forecast mean error (bias).

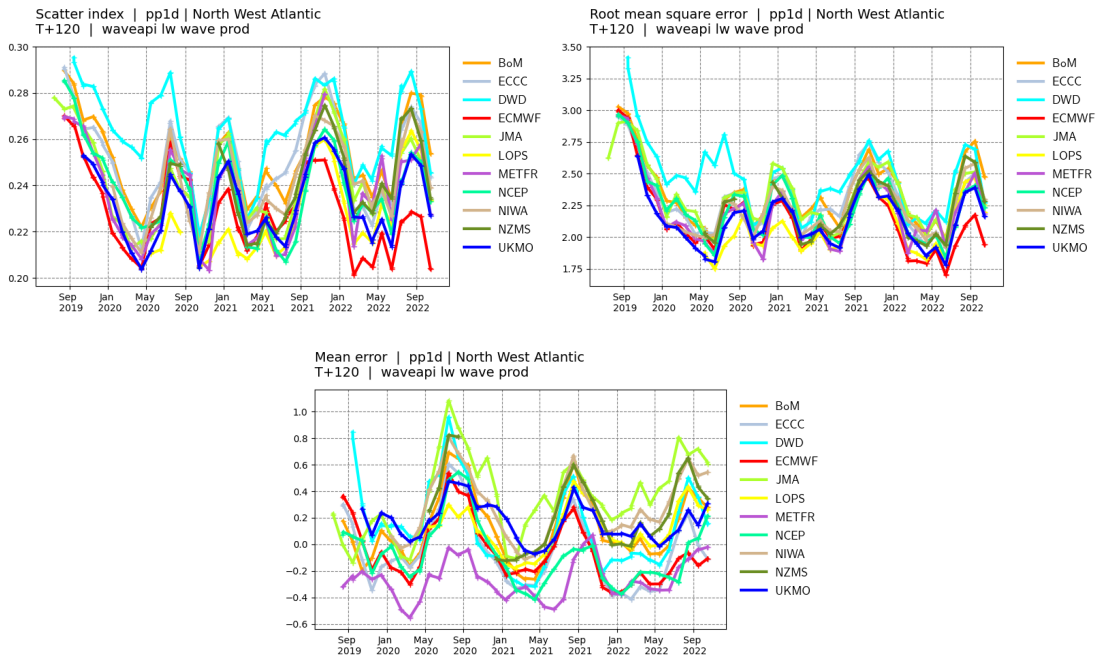


**North West Atlantic.** Scores time-series at **day 1**. Top left panel: Forecast scatter index (standard deviation of the difference normalised by the mean of the observations). Top right panel: Forecast root mean square error (RMSE). Bottom panel: forecast mean error (bias).



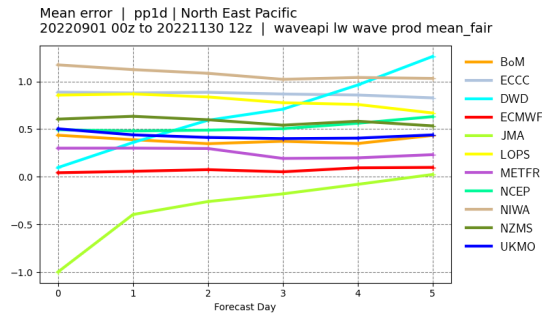
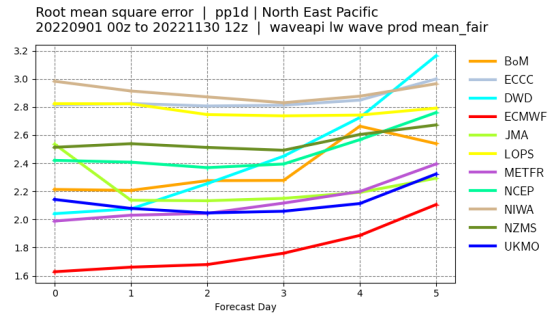
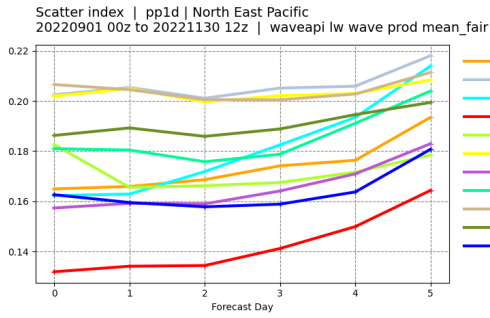
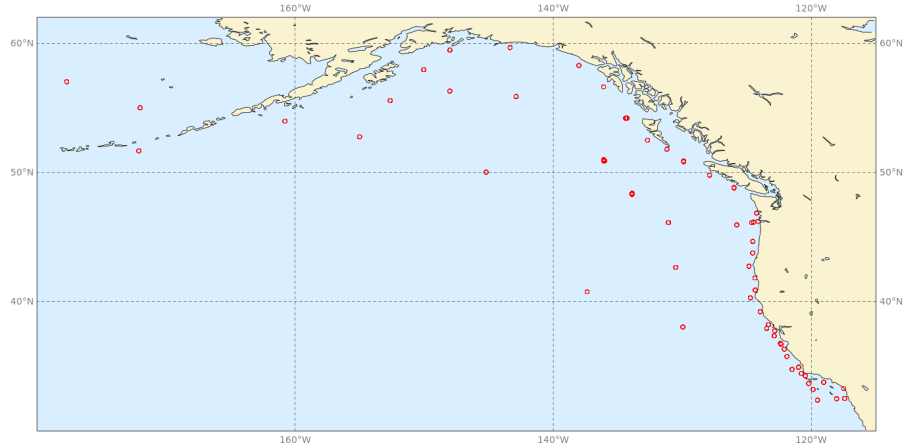
**North West Atlantic.** Scores time-series at **day 3**. Top left panel: Forecast scatter index (standard deviation of the difference normalised by the mean of the observations). Top right panel: Forecast root mean square error (RMSE). Bottom panel: forecast mean error (bias).



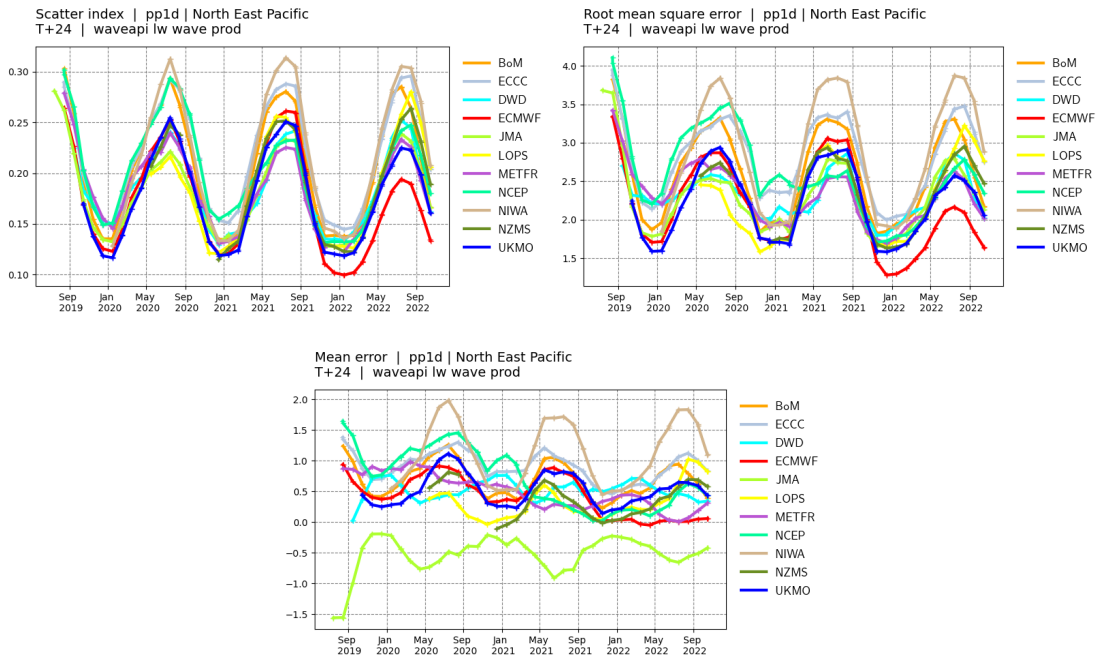


**North West Atlantic.** Scores time-series at **day 5**. Top left panel: Forecast scatter index (standard deviation of the difference normalised by the mean of the observations). Top right panel: Forecast root mean square error (RMSE). Bottom panel: forecast mean error (bias).

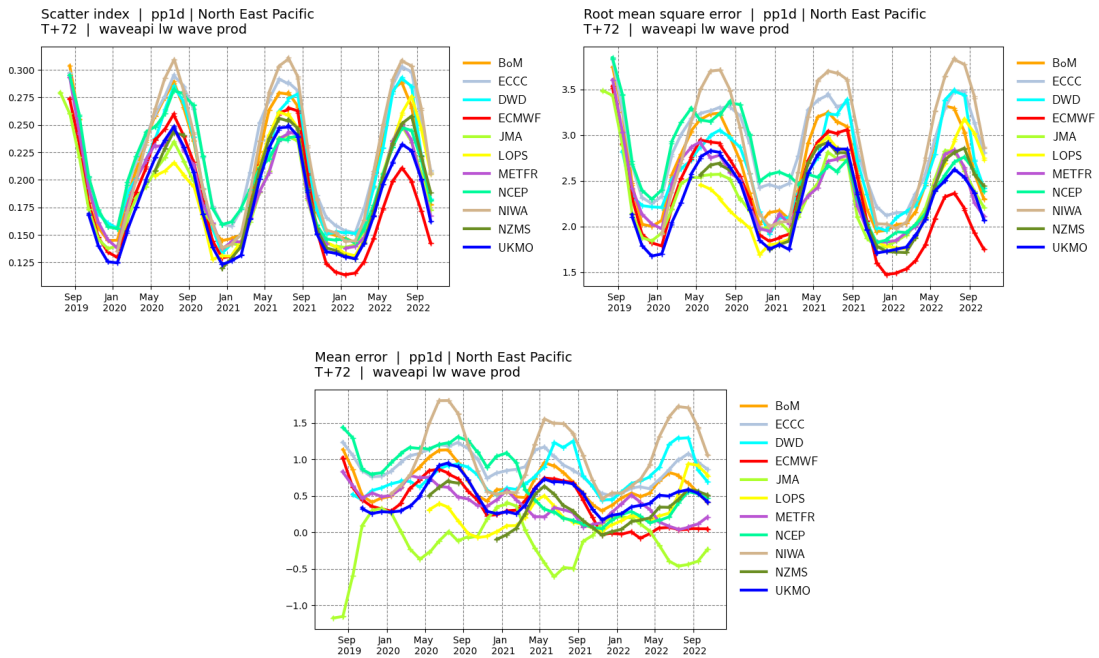
Buoys observations - from 20220901 to 20221130 - (pp1d)



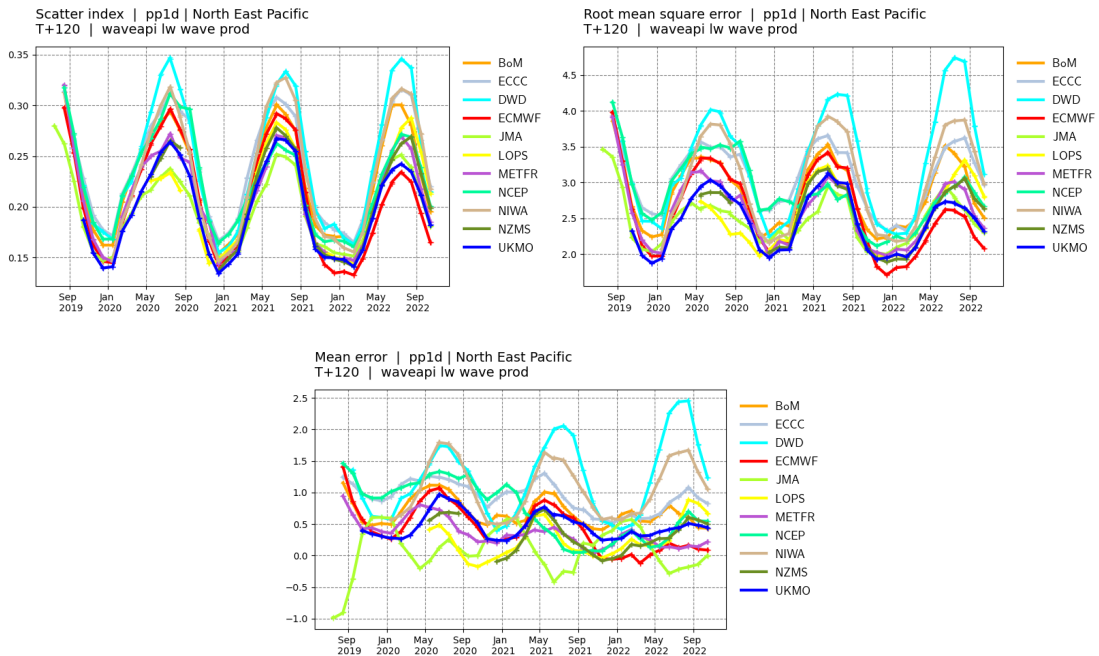
**North East Pacific.** Top panel: observation distribution. Middle left panel: Forecast scatter index (standard deviation of the difference normalised by the mean of the observations). Middle right panel: Forecast root mean square error (RMSE). Bottom panel: forecast mean error (bias).



**North East Pacific.** Scores time-series at **day 1**. Top left panel: Forecast scatter index (standard deviation of the difference normalised by the mean of the observations). Top right panel: Forecast root mean square error (RMSE). Bottom panel: forecast mean error (bias).

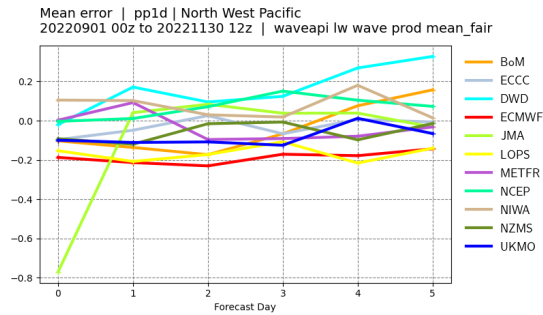
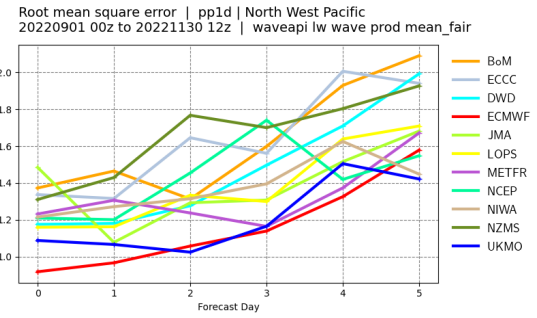
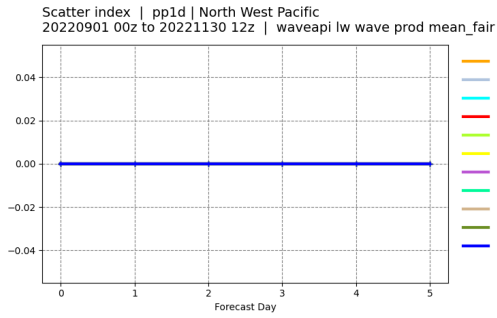
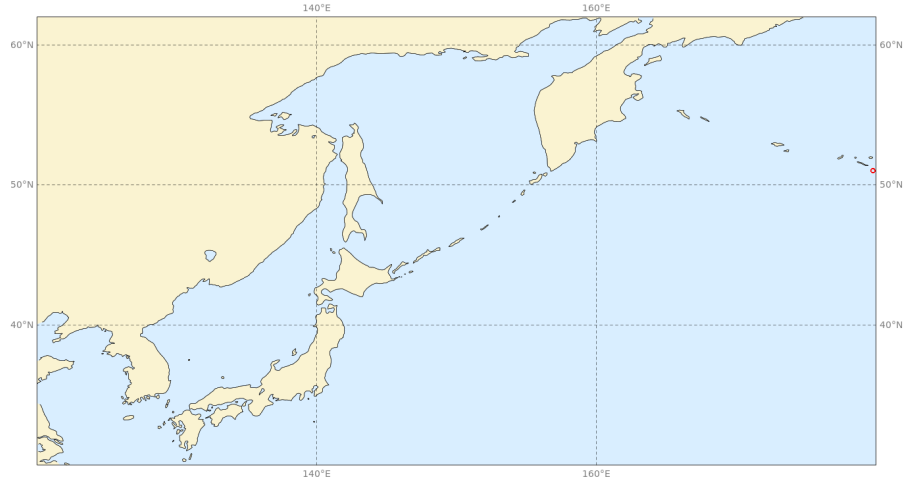


**North East Pacific.** Scores time-series at **day 3**. Top left panel: Forecast scatter index (standard deviation of the difference normalised by the mean of the observations). Top right panel: Forecast root mean square error (RMSE). Bottom panel: forecast mean error (bias).

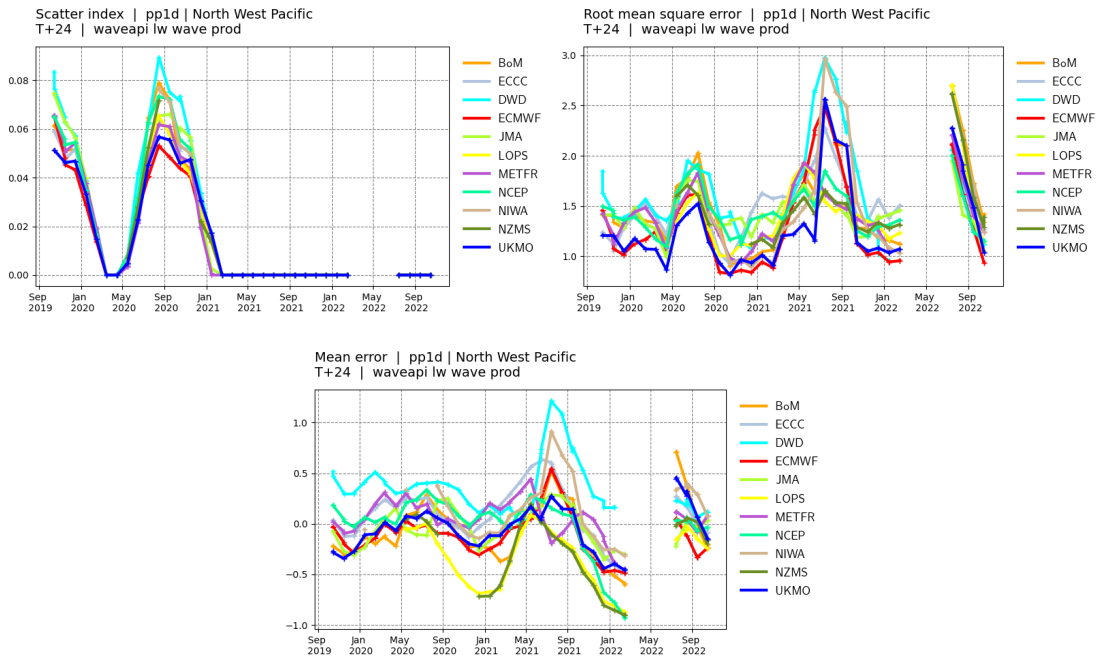


**North East Pacific.** Scores time-series at **day 5**. Top left panel: Forecast scatter index (standard deviation of the difference normalised by the mean of the observations). Top right panel: Forecast root mean square error (RMSE). Bottom panel: forecast mean error (bias).

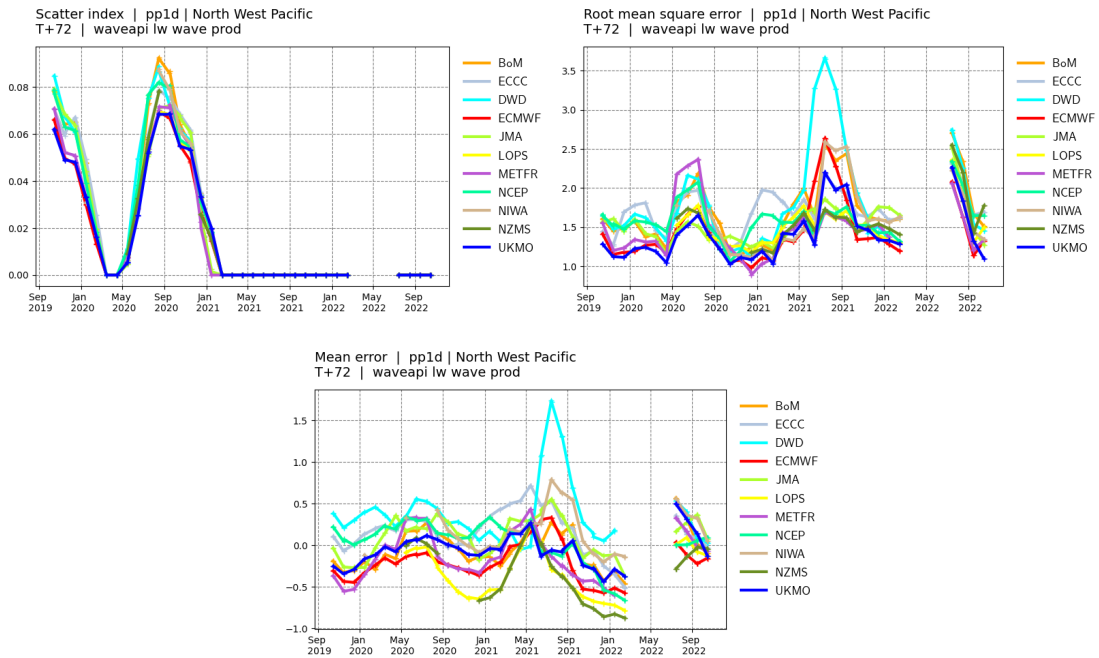
Buoys observations - from 20220901 to 20221130 - (pp1d)



**North West Pacific.** Top panel: observation distribution. Middle left panel: Forecast scatter index (standard deviation of the difference normalised by the mean of the observations). Middle right panel: Forecast root mean square error (RMSE). Bottom panel: forecast mean error (bias).

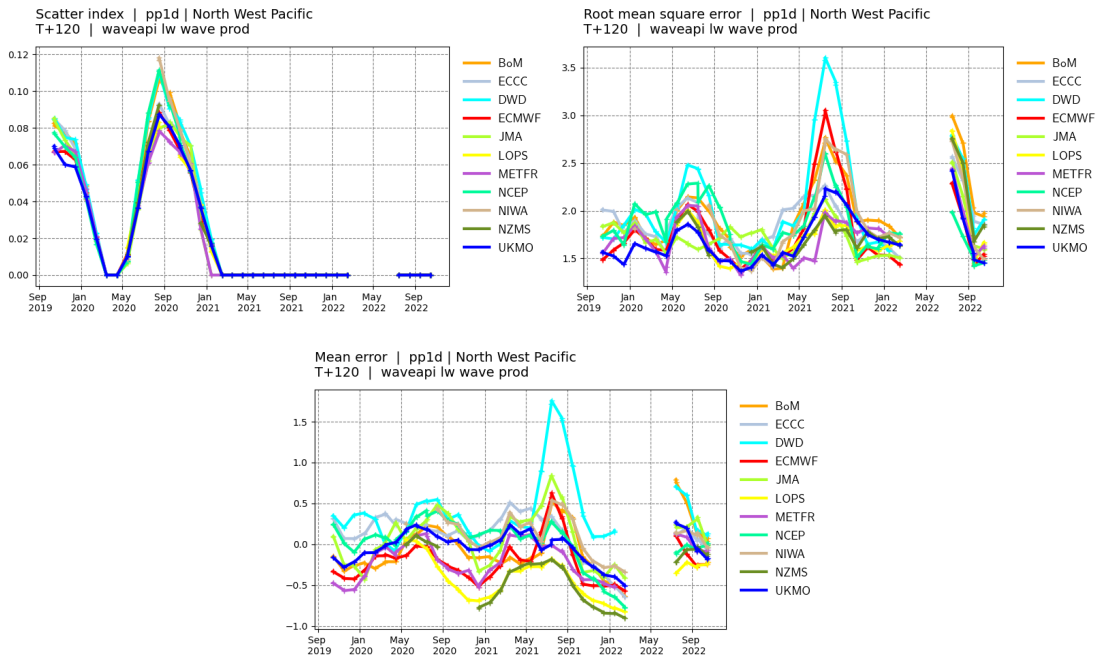


**North West Pacific.** Scores time-series at **day 1**. Top left panel: Forecast scatter index (standard deviation of the difference normalised by the mean of the observations). Top right panel: Forecast root mean square error (RMSE). Bottom panel: forecast mean error (bias).



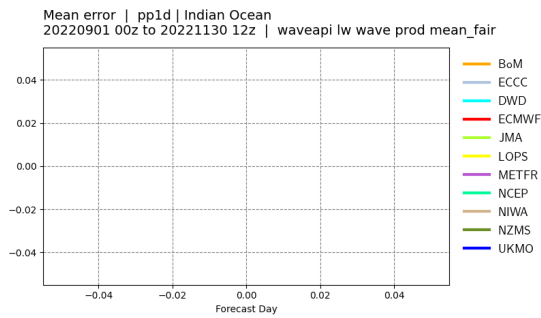
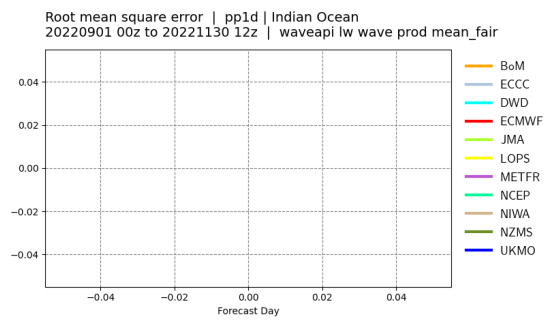
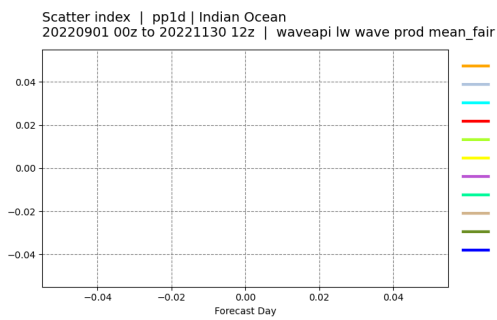
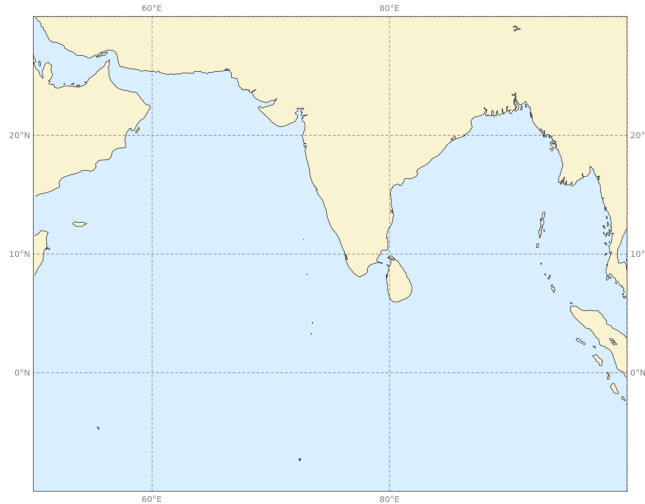
**North West Pacific.** Scores time-series at **day 3**. Top left panel: Forecast scatter index (standard deviation of the difference normalised by the mean of the observations). Top right panel: Forecast root mean square error (RMSE). Bottom panel: forecast mean error (bias).



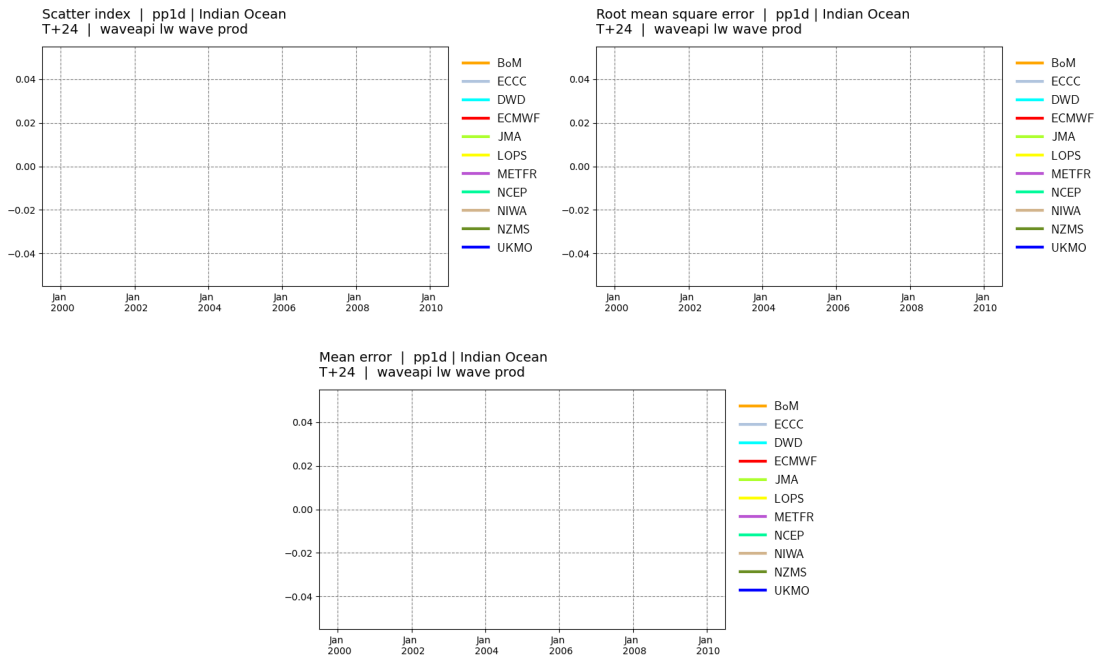


**North West Pacific.** Scores time-series at **day 5**. Top left panel: Forecast scatter index (standard deviation of the difference normalised by the mean of the observations). Top right panel: Forecast root mean square error (RMSE). Bottom panel: forecast mean error (bias).

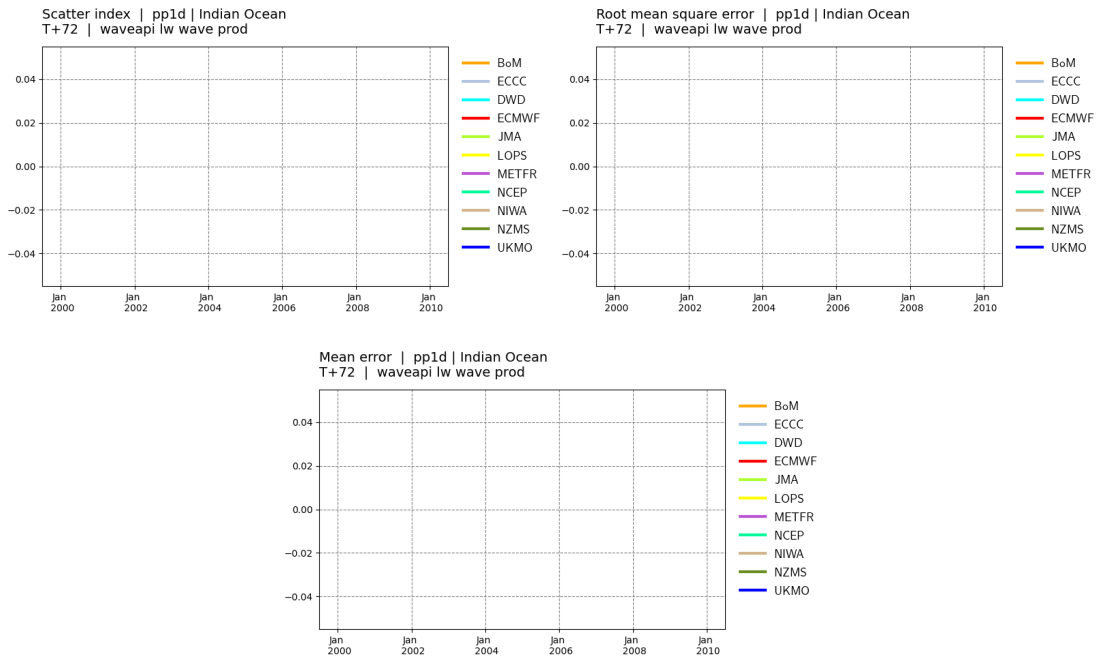
Buoys observations - from 20220901 to 20221130 - (pp1d)



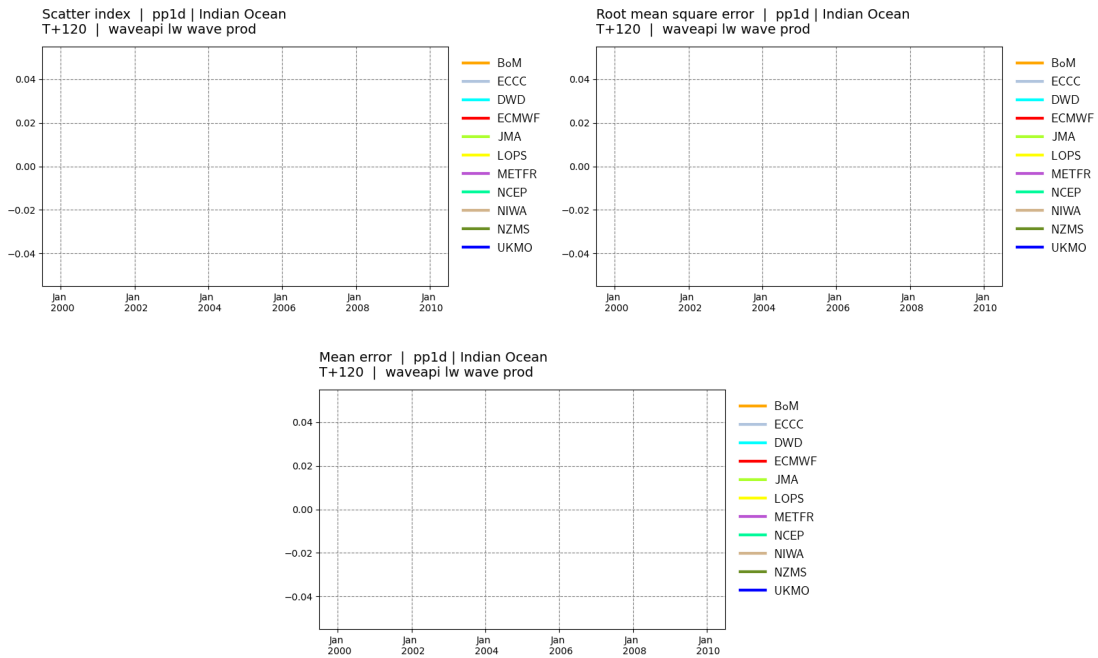
**Indian Ocean.** Top panel: observation distribution. Middle left panel: Forecast scatter index (standard deviation of the difference normalised by the mean of the observations). Middle right panel: Forecast root mean square error (RMSE). Bottom panel: forecast mean error (bias).



**Indian Ocean.** Scores time-series at **day 1**. Top left panel: Forecast scatter index (standard deviation of the difference normalised by the mean of the observations). Top right panel: Forecast root mean square error (RMSE). Bottom panel: forecast mean error (bias).

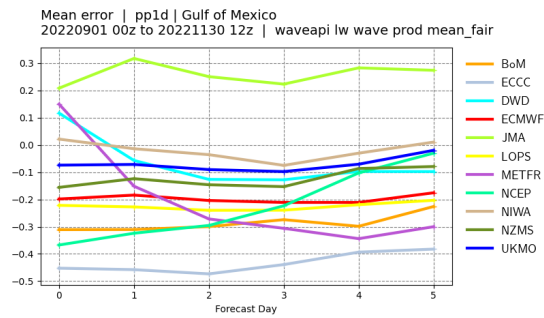
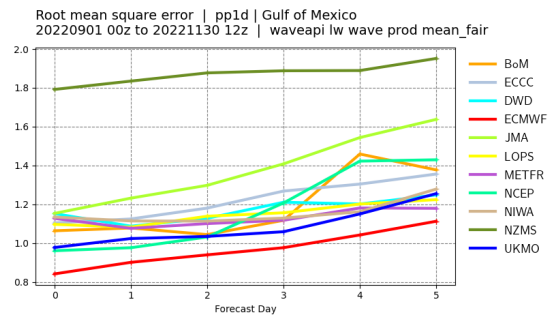
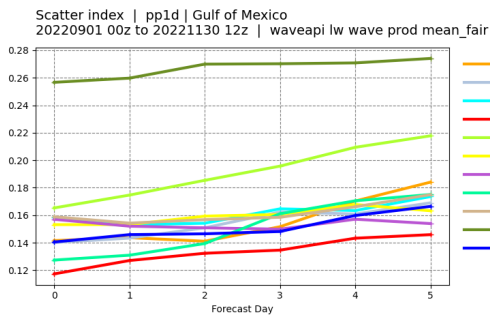
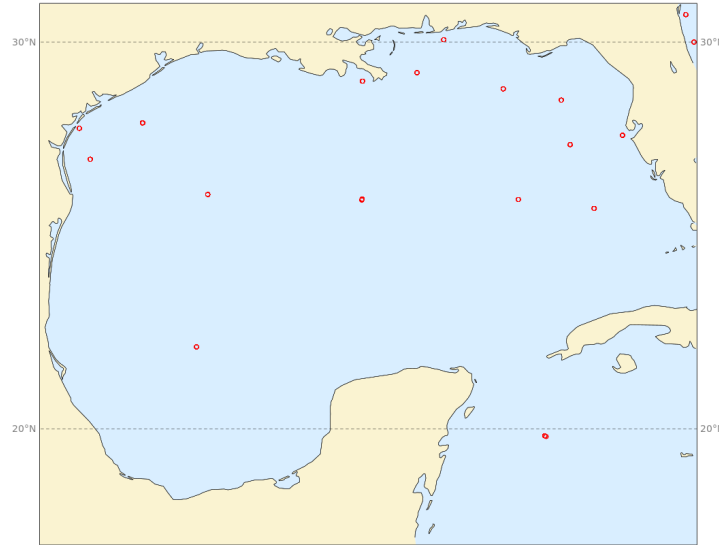


**Indian Ocean.** Scores time-series at **day 3**. Top left panel: Forecast scatter index (standard deviation of the difference normalised by the mean of the observations). Top right panel: Forecast root mean square error (RMSE). Bottom panel: forecast mean error (bias).

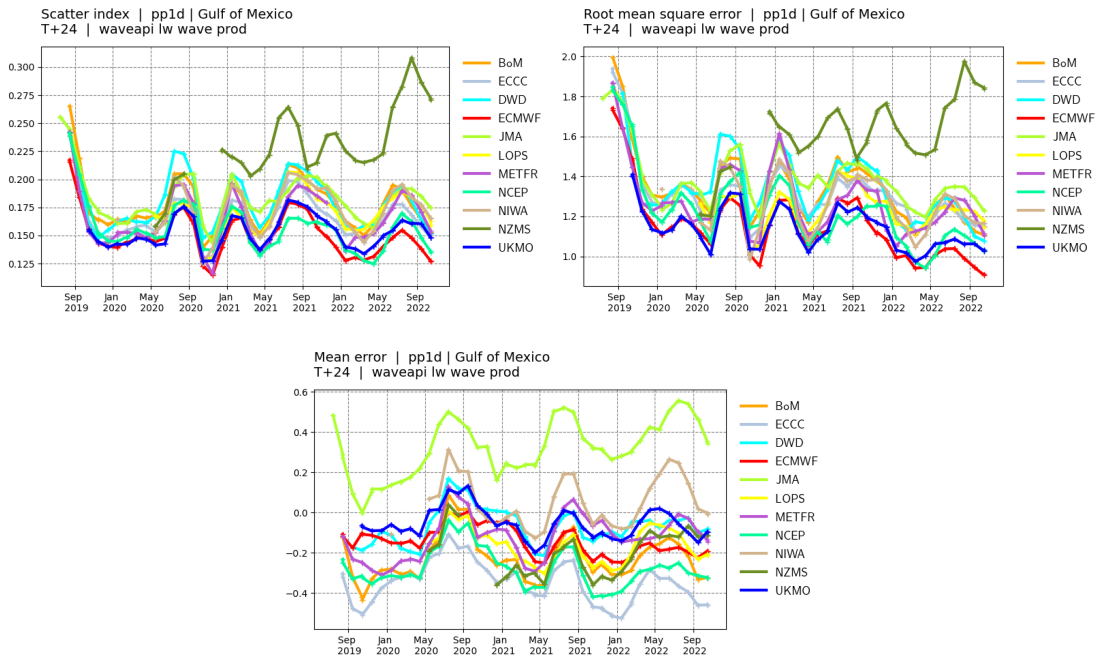


**Indian Ocean.** Scores time-series at **day 5**. Top left panel: Forecast scatter index (standard deviation of the difference normalised by the mean of the observations). Top right panel: Forecast root mean square error (RMSE). Bottom panel: forecast mean error (bias).

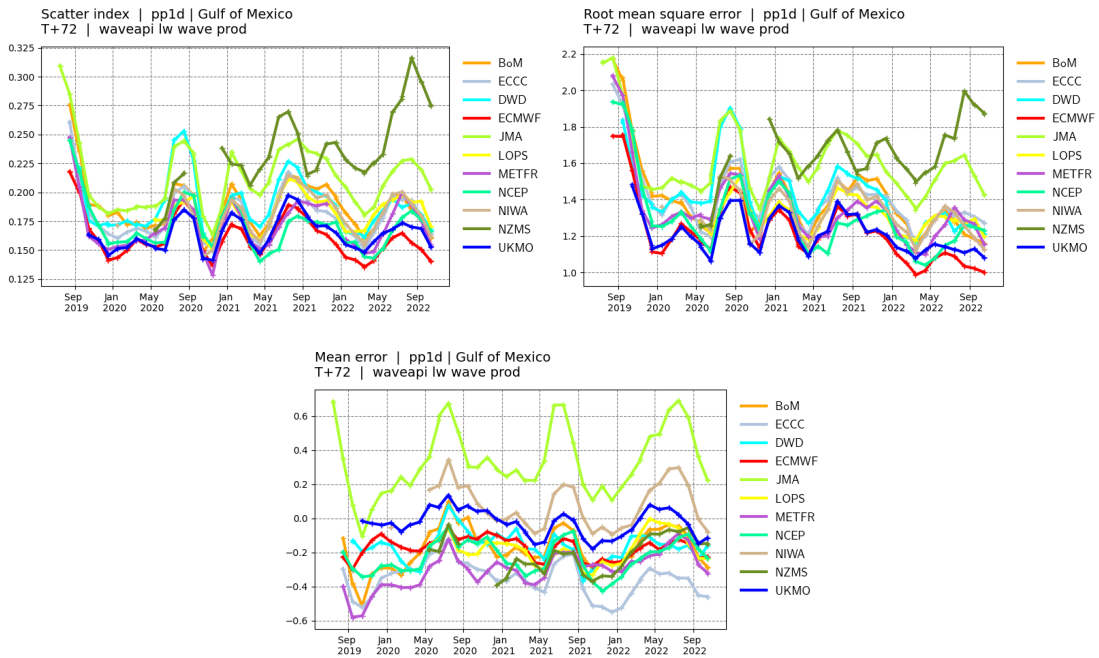
Buoys observations - from 20220901 to 20221130 - (pp1d)



**Gulf of Mexico.** Top panel: observation distribution. Middle left panel: Forecast scatter index (standard deviation of the difference normalised by the mean of the observations). Middle right panel: Forecast root mean square error (RMSE). Bottom panel: forecast mean error (bias).

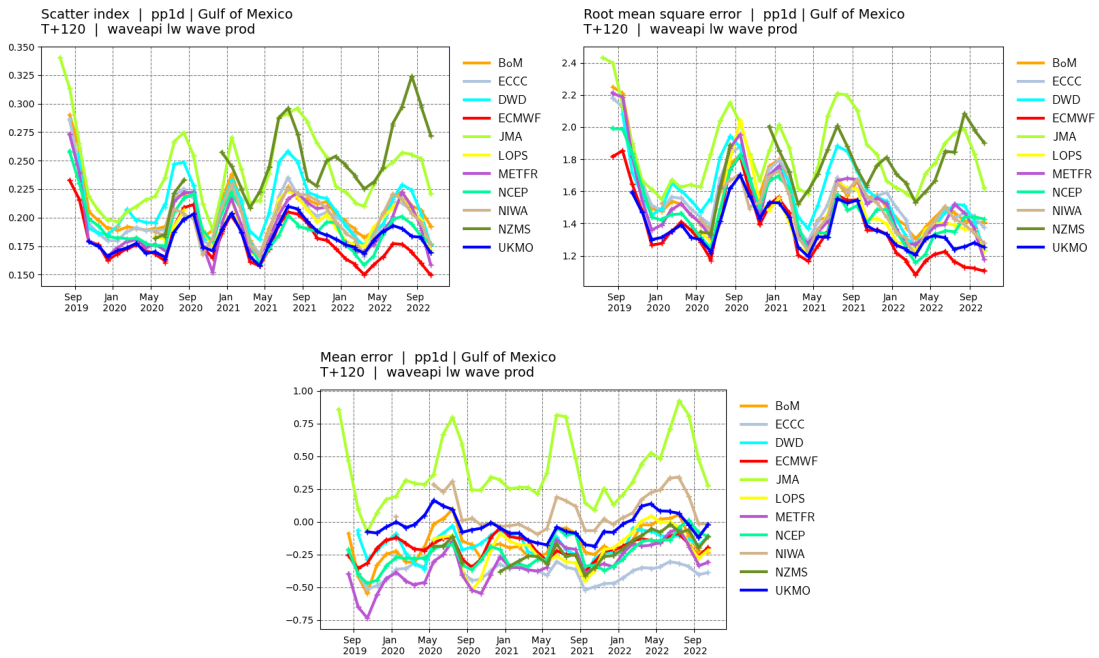


**Gulf of Mexico.** Scores time-series at **day 1**. Top left panel: Forecast scatter index (standard deviation of the difference normalised by the mean of the observations). Top right panel: Forecast root mean square error (RMSE). Bottom panel: forecast mean error (bias).



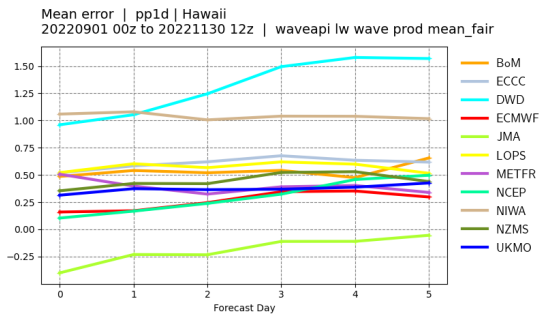
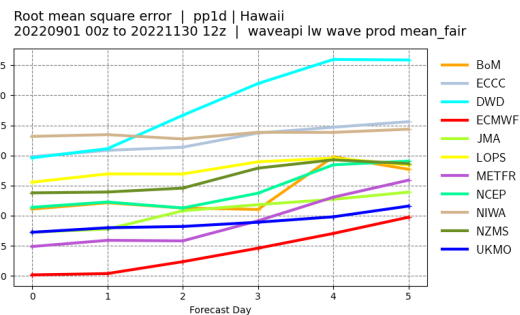
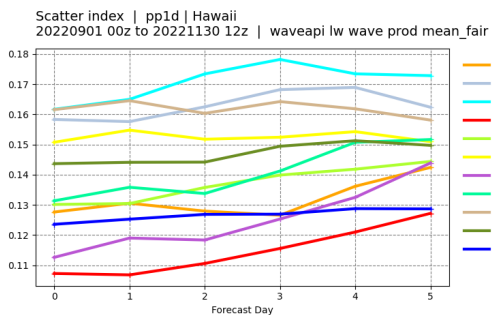
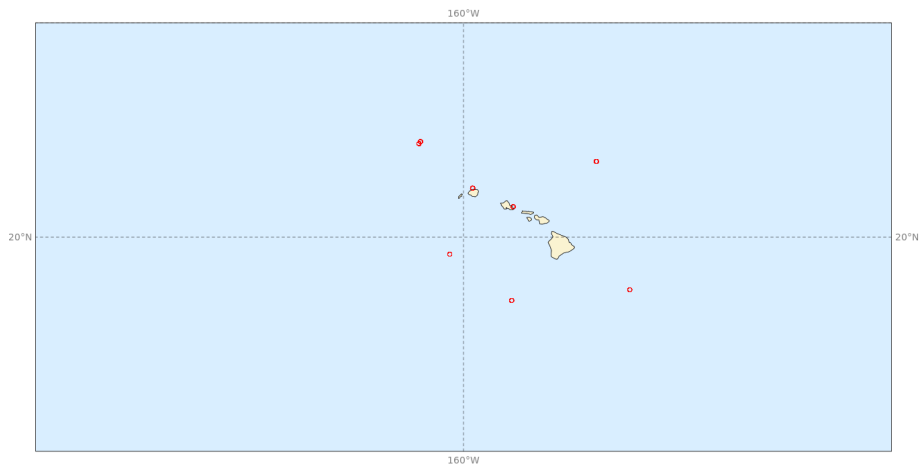
**Gulf of Mexico.** Scores time-series at **day 3**. Top left panel: Forecast scatter index (standard deviation of the difference normalised by the mean of the observations). Top right panel: Forecast root mean square error (RMSE). Bottom panel: forecast mean error (bias).



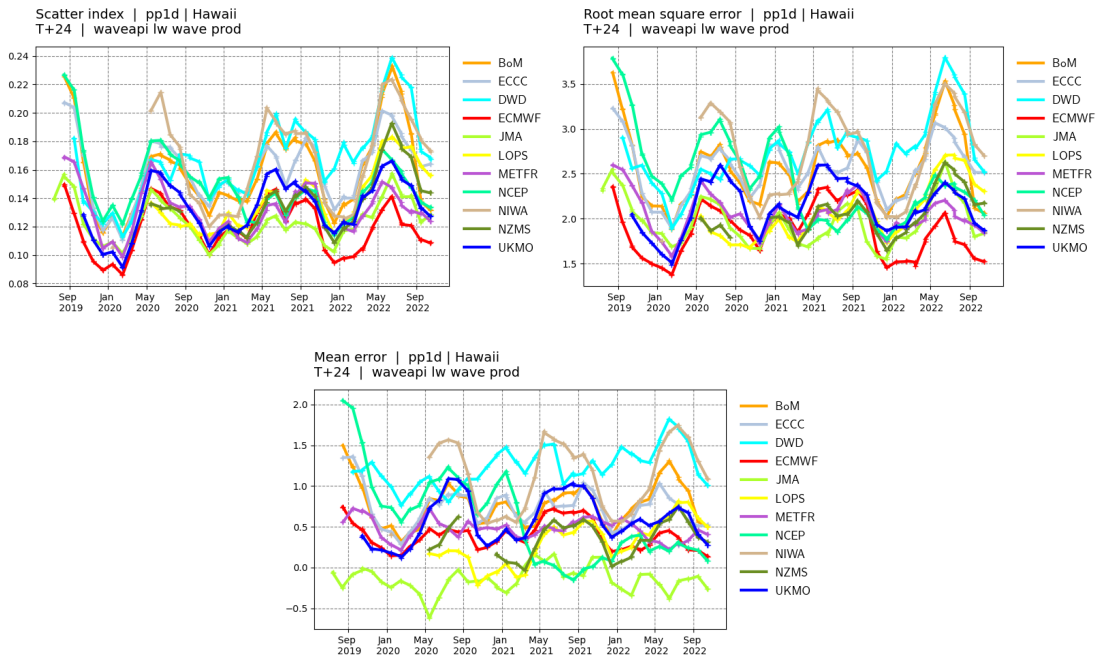


**Gulf of Mexico.** Scores time-series at **day 5**. Top left panel: Forecast scatter index (standard deviation of the difference normalised by the mean of the observations). Top right panel: Forecast root mean square error (RMSE). Bottom panel: forecast mean error (bias).

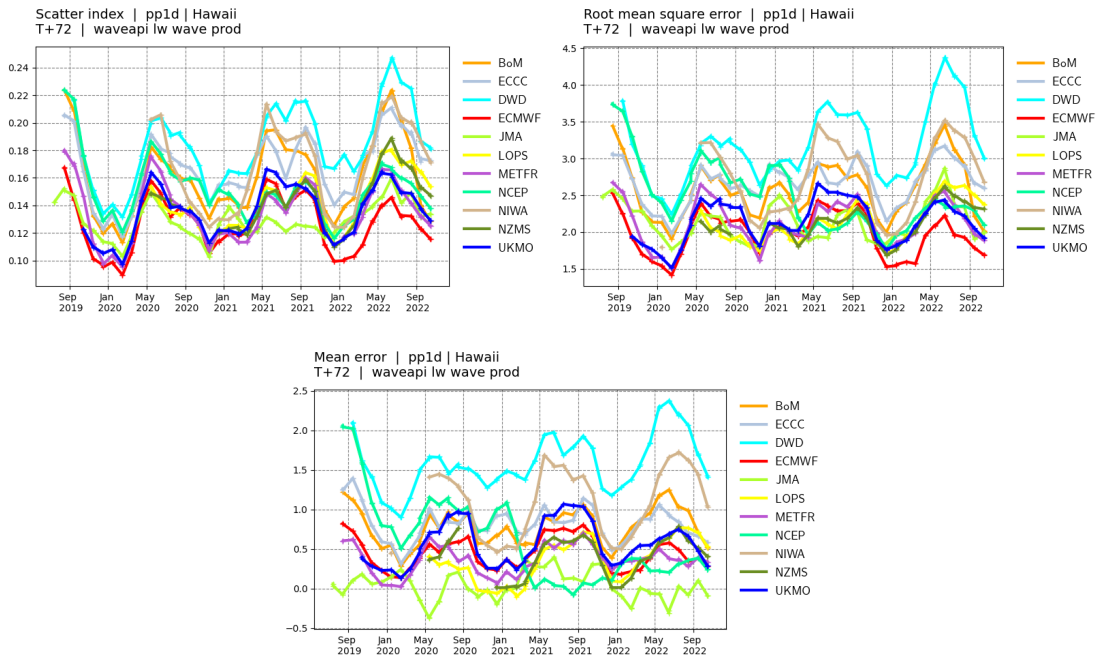
Buoys observations - from 20220901 to 20221130 - (pp1d)



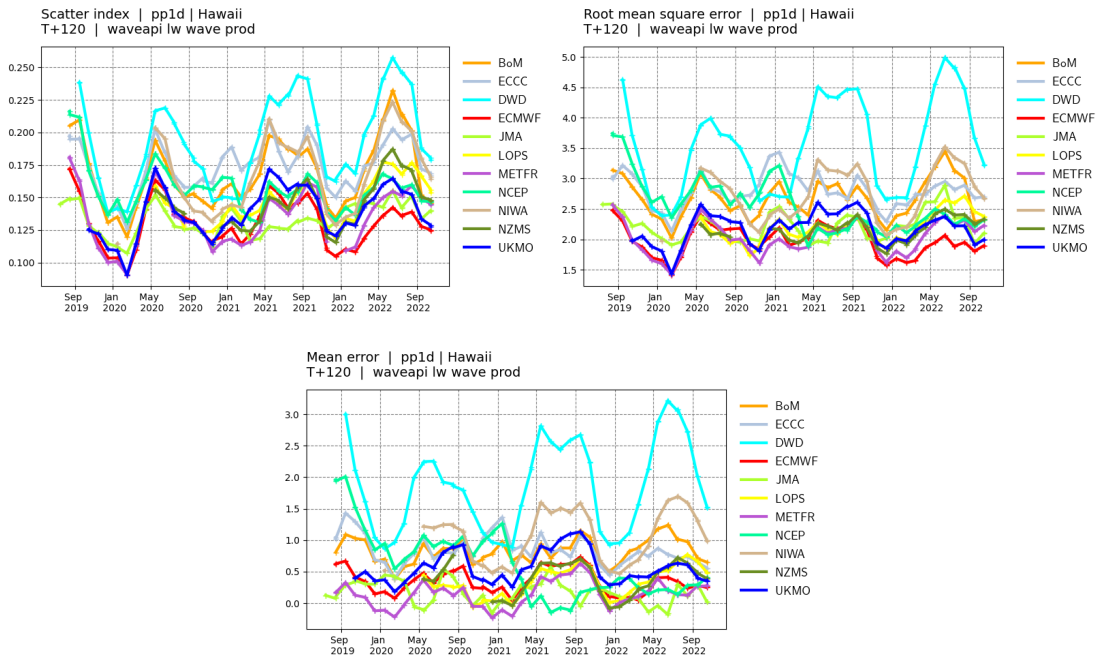
**Hawaii.** Top panel: observation distribution. Middle left panel: Forecast scatter index (standard deviation of the difference normalised by the mean of the observations). Middle right panel: Forecast root mean square error (RMSE). Bottom panel: forecast mean error (bias).



**Hawaii.** Scores time-series at **day 1**. Top left panel: Forecast scatter index (standard deviation of the difference normalised by the mean of the observations). Top right panel: Forecast root mean square error (RMSE). Bottom panel: forecast mean error (bias).

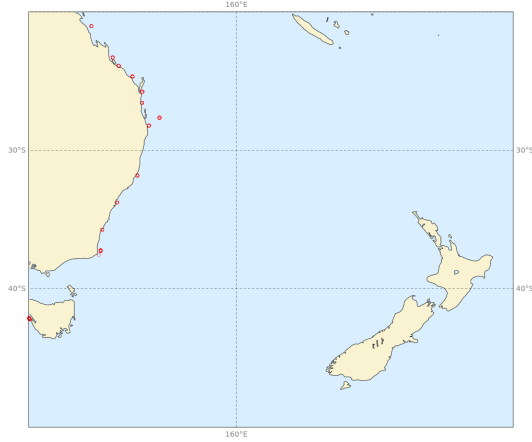


**Hawaii.** Scores time-series at **day 3**. Top left panel: Forecast scatter index (standard deviation of the difference normalised by the mean of the observations). Top right panel: Forecast root mean square error (RMSE). Bottom panel: forecast mean error (bias).

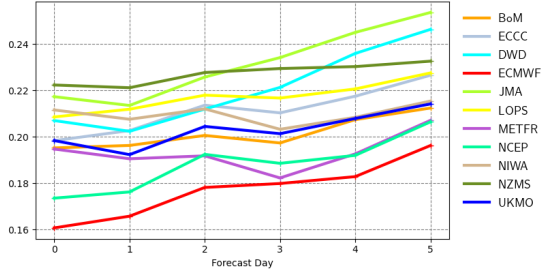


**Hawaii.** Scores time-series at **day 5**. Top left panel: Forecast scatter index (standard deviation of the difference normalised by the mean of the observations). Top right panel: Forecast root mean square error (RMSE). Bottom panel: forecast mean error (bias).

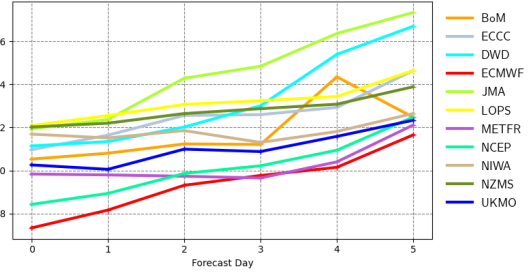
Buoys observations - from 20220901 to 20221130 - (pp1d)



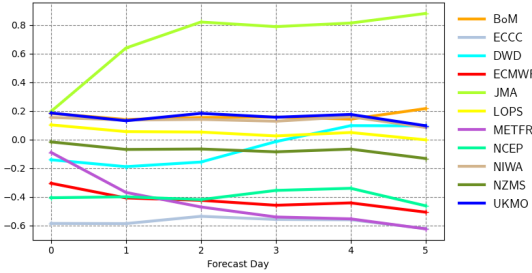
Scatter index | pp1d | Eastern Australia and New Zealand  
20220901 00z to 20221130 12z | waveapi lw wave prod mean\_fair



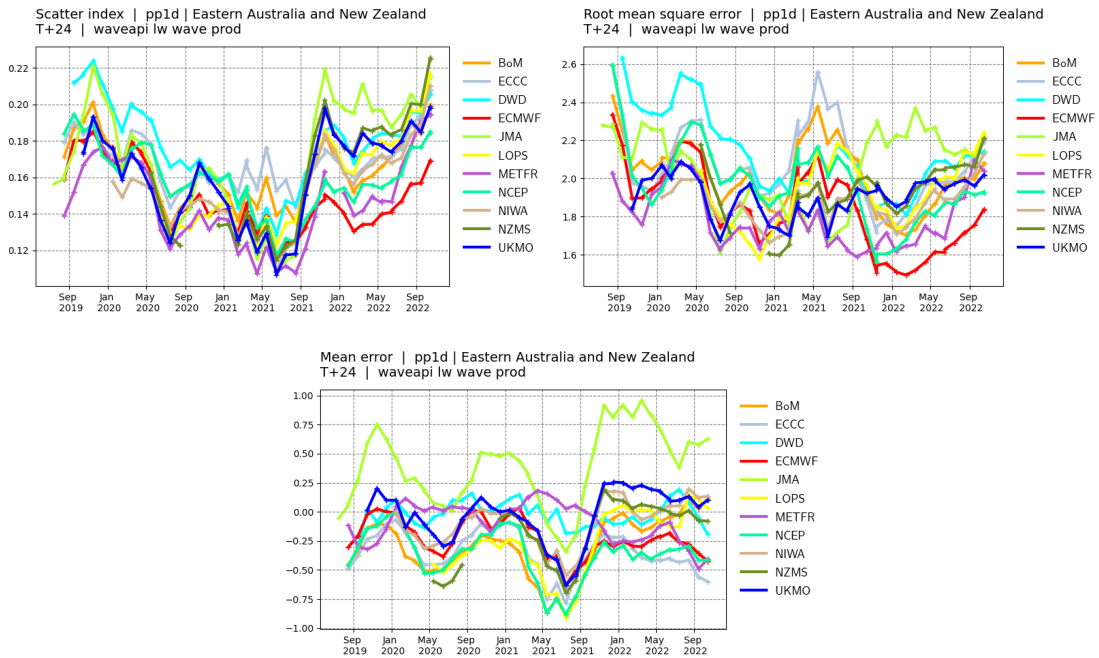
Root mean square error | pp1d | Eastern Australia and New Zealand  
20220901 00z to 20221130 12z | waveapi lw wave prod mean\_fair



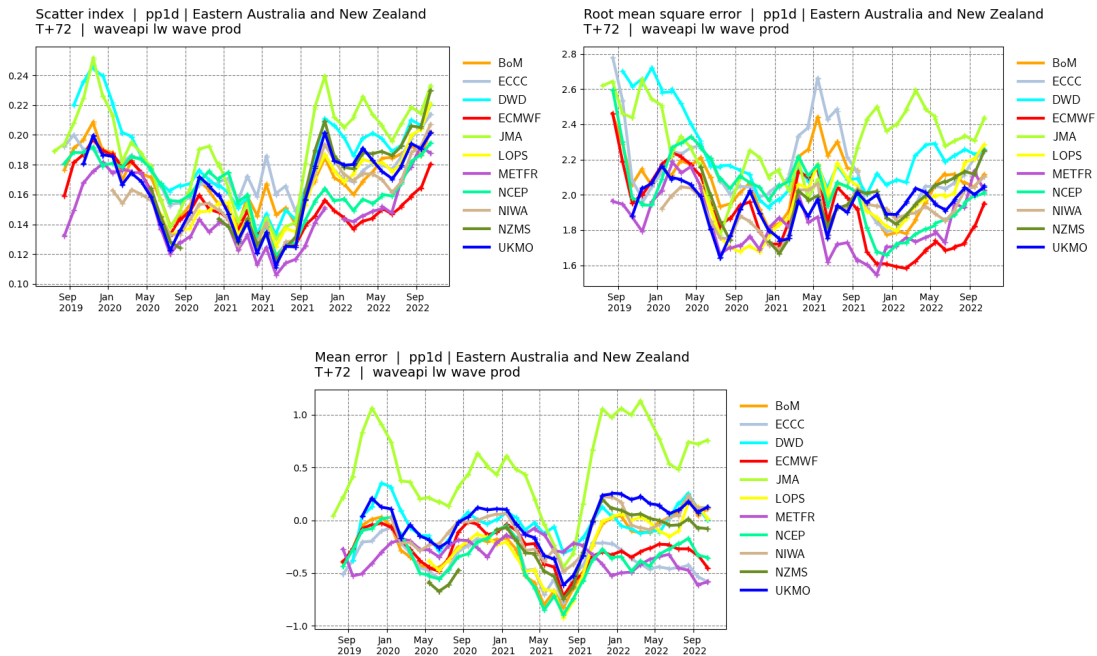
Mean error | pp1d | Eastern Australia and New Zealand  
20220901 00z to 20221130 12z | waveapi lw wave prod mean\_fair



**East Australia - New Zealand.** Top panel: observation distribution. Middle left panel: Forecast scatter index (standard deviation of the difference normalised by the mean of the observations). Middle right panel: Forecast root mean square error (RMSE). Bottom panel: forecast mean error (bias).

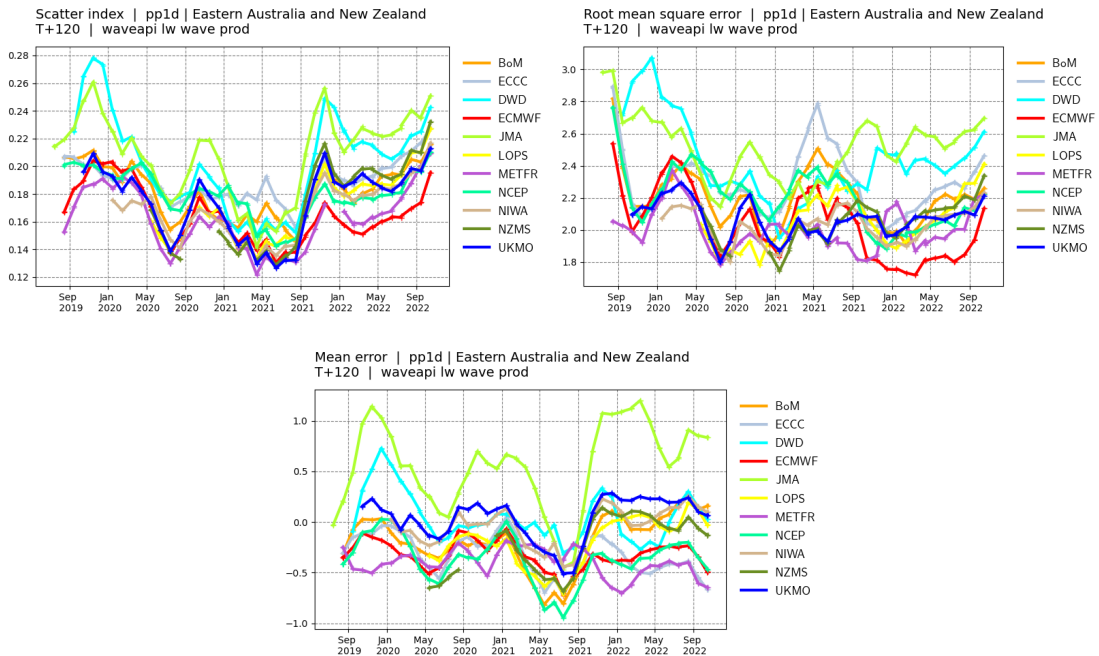


**East Australia - New Zealand.** Scores time-series at **day 1**. Top left panel: Forecast scatter index (standard deviation of the difference normalised by the mean of the observations). Top right panel: Forecast root mean square error (RMSE). Bottom panel: forecast mean error (bias).



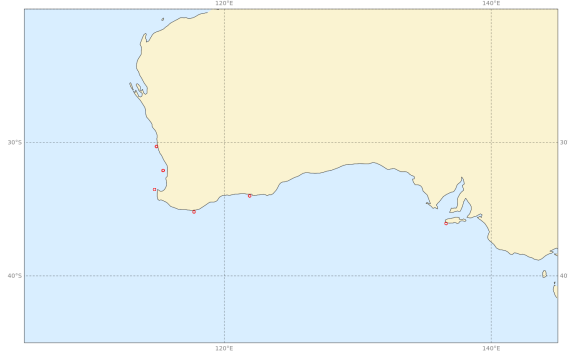
**East Australia - New Zealand.** Scores time-series at **day 3**. Top left panel: Forecast scatter index (standard deviation of the difference normalised by the mean of the observations). Top right panel: Forecast root mean square error (RMSE). Bottom panel: forecast mean error (bias).



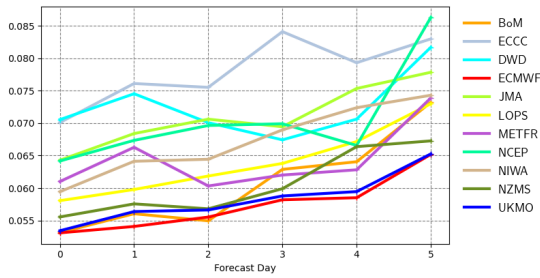


**East Australia - New Zealand.** Scores time-series at **day 5**. Top left panel: Forecast scatter index (standard deviation of the difference normalised by the mean of the observations). Top right panel: Forecast root mean square error (RMSE). Bottom panel: forecast mean error (bias).

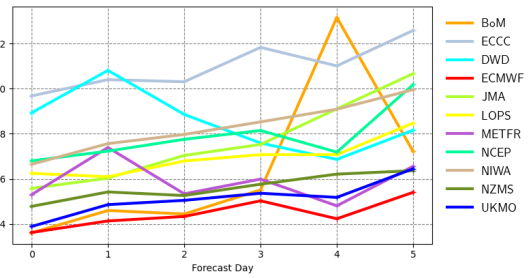
Buoys observations - from 20220901 to 20221130 - (pp1d)



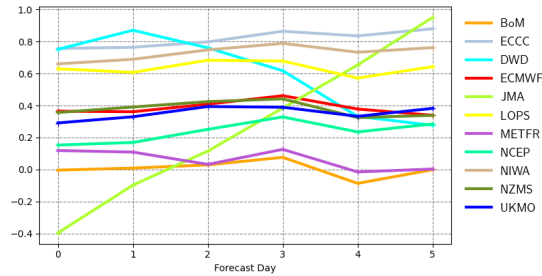
Scatter index | pp1d | South Southwestern Australia  
20220901 00z to 20221130 12z | waveapi lw wave prod mean\_fair



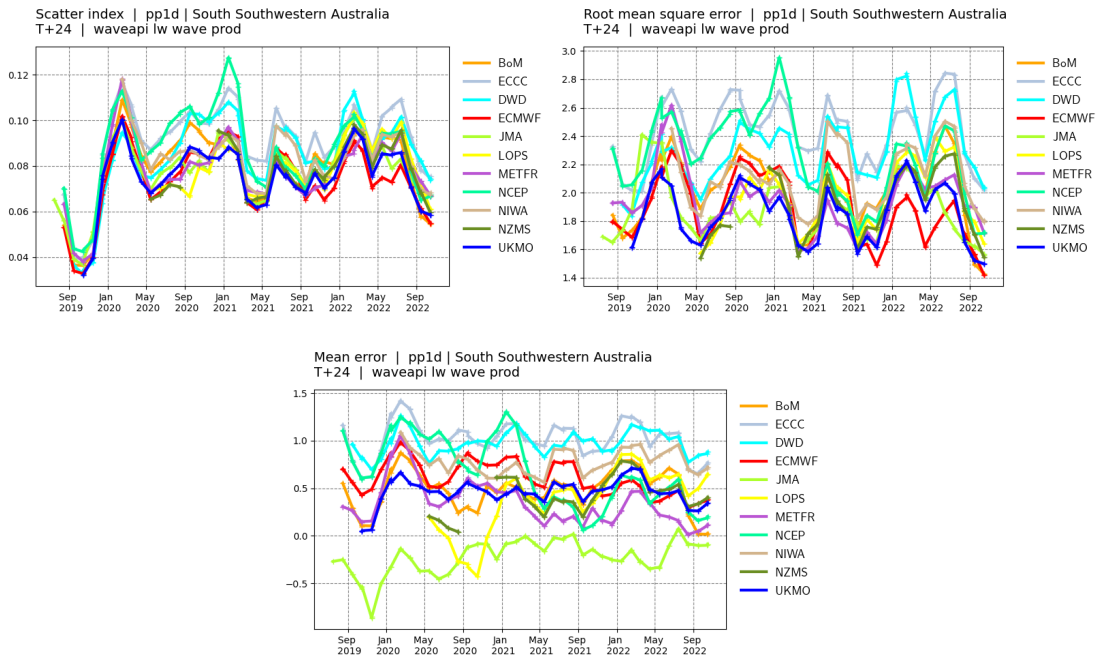
Root mean square error | pp1d | South Southwestern Australia  
20220901 00z to 20221130 12z | waveapi lw wave prod mean\_fair



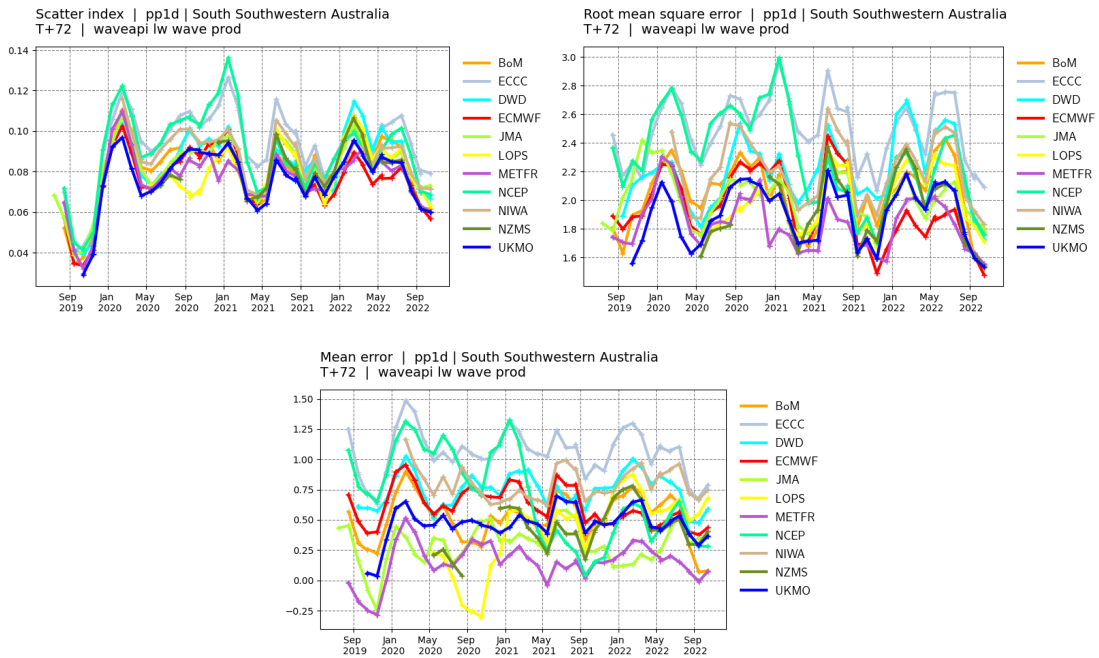
Mean error | pp1d | South Southwestern Australia  
20220901 00z to 20221130 12z | waveapi lw wave prod mean\_fair



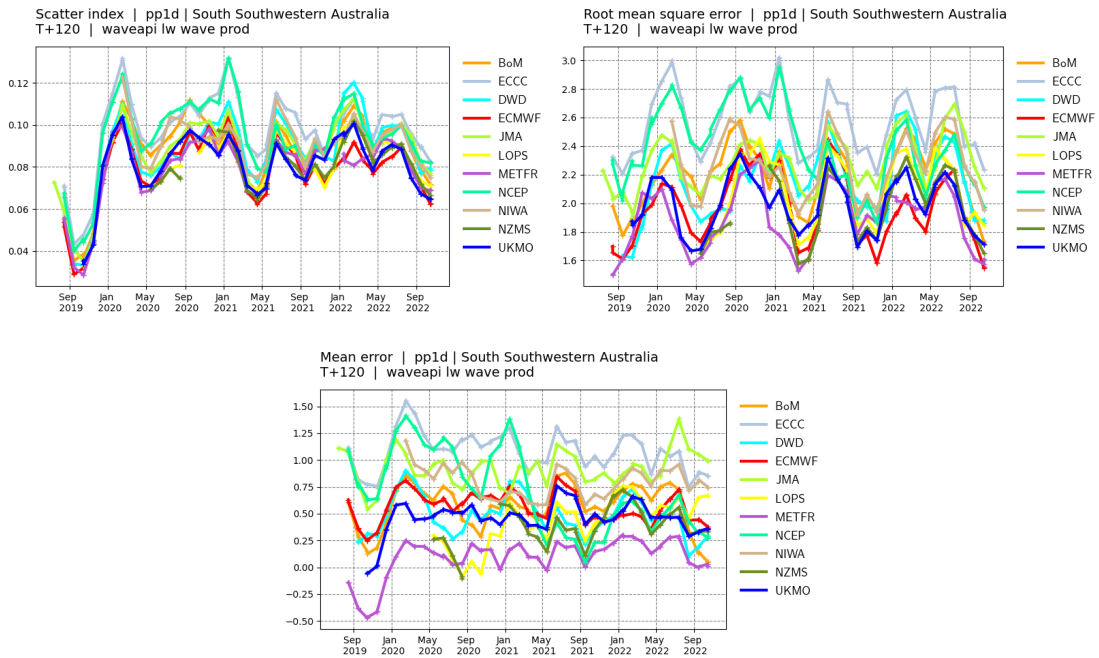
**South South West Australia.** Top panel: observation distribution. Middle left panel: Forecast scatter index (standard deviation of the difference normalised by the mean of the observations). Middle right panel: Forecast root mean square error (RMSE). Bottom panel: forecast mean error (bias).



**South South West Australia.** Scores time-series at **day 1**. Top left panel: Forecast scatter index (standard deviation of the difference normalised by the mean of the observations). Top right panel: Forecast root mean square error (RMSE). Bottom panel: forecast mean error (bias).



**South South West Australia.** Scores time-series at **day 3**. Top left panel: Forecast scatter index (standard deviation of the difference normalised by the mean of the observations). Top right panel: Forecast root mean square error (RMSE). Bottom panel: forecast mean error (bias).



**South South West Australia.** Scores time-series at **day 5**. Top left panel: Forecast scatter index (standard deviation of the difference normalised by the mean of the observations). Top right panel: Forecast root mean square error (RMSE). Bottom panel: forecast mean error (bias).