

Intercomparison of operational wave forecasting systems against
in-situ observations: data from BoM, DMI, DWD, ECCO,
ECMWF, JMA, LOPS, METEOAM, METFR, METNO, NCEP,
NZMS, PRTOS, SHNSM, UKMO.

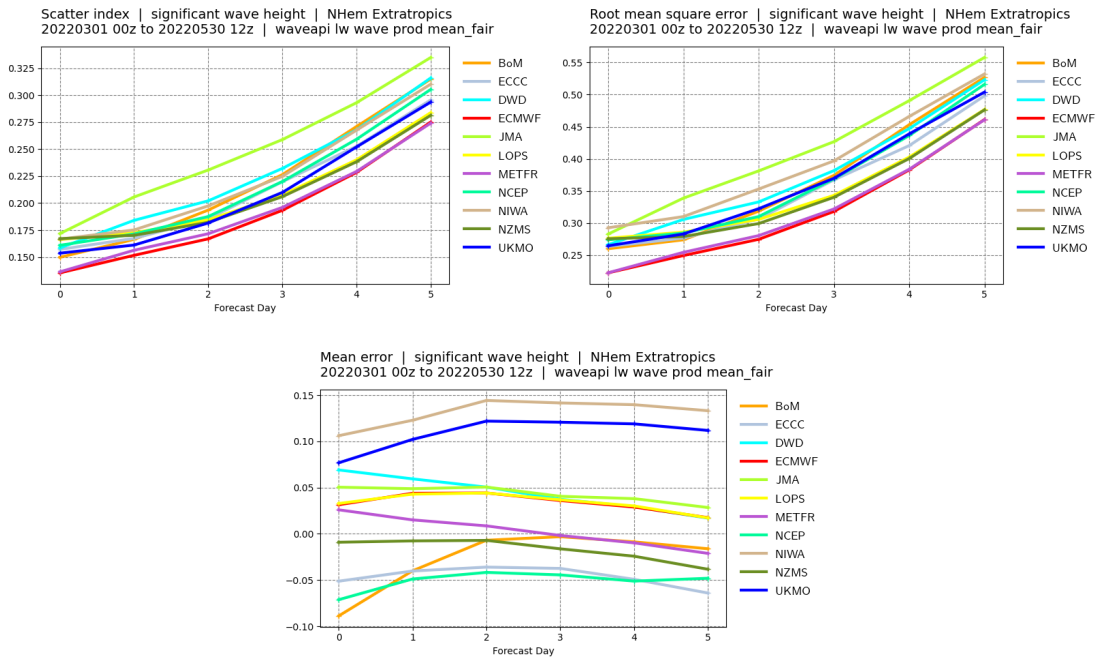
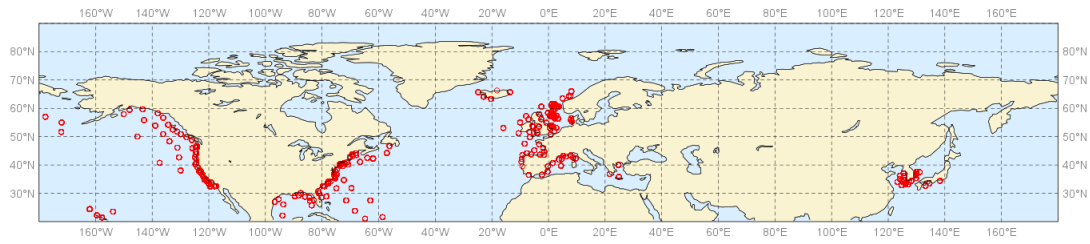
00 and 12 UTC runs

WMO Lead Centre for Wave Forecast Verification LC-WFV,
European Centre for Medium-Range Weather Forecasts ECMWF

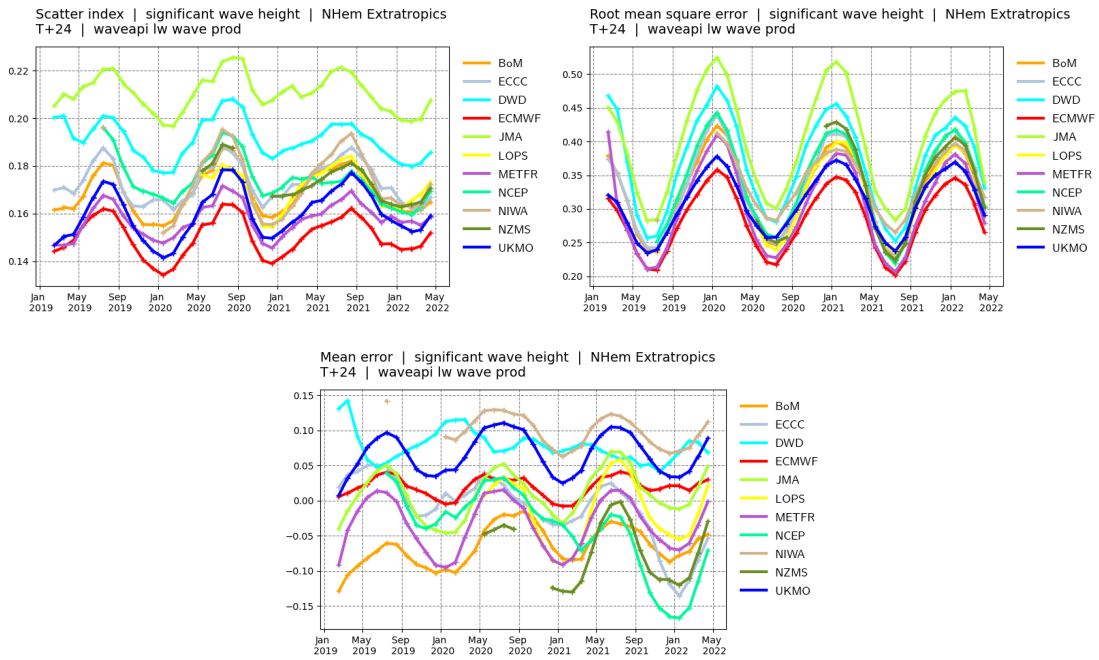
June 22, 2022

PART I: significant wave height (SWH)

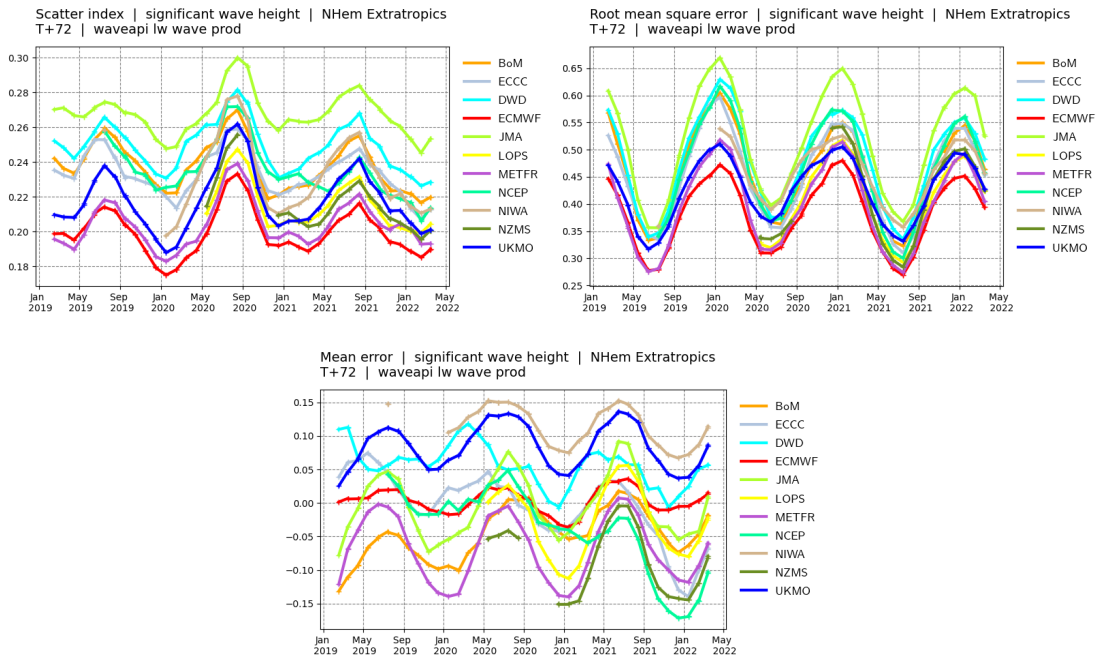
Buoys observations - from 20220301 to 20220530 - (swh)



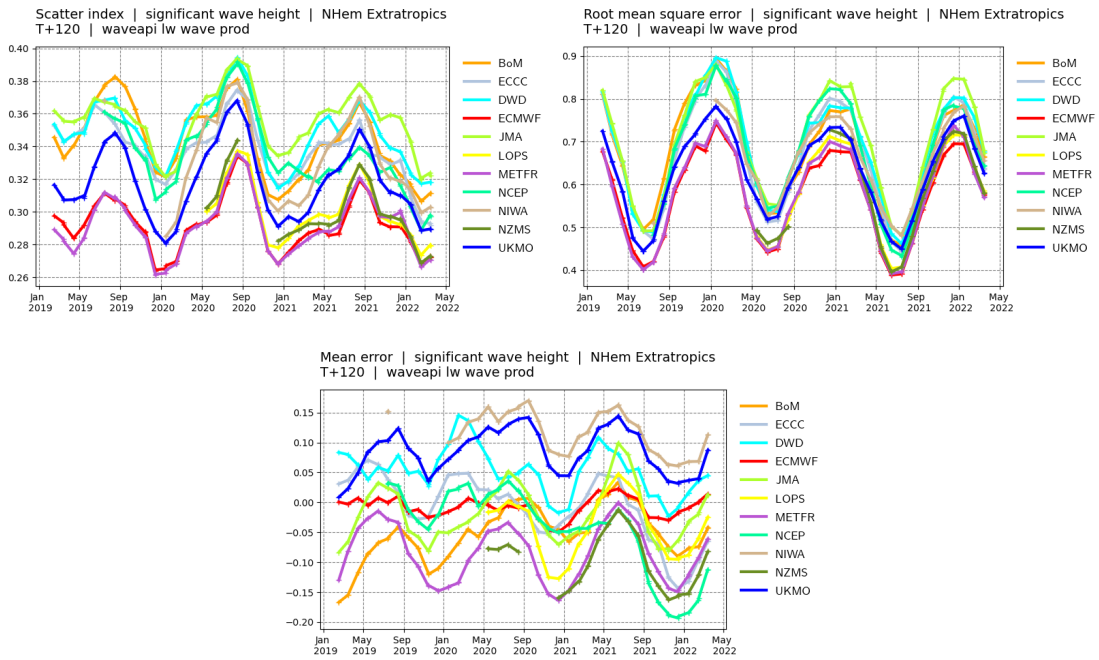
Northern Hemisphere. Top panel: observation distribution. Middle left panel: Forecast scatter index (standard deviation of the difference normalised by the mean of the observations). Middle right panel: Forecast root mean square error (RMSE). Bottom panel: forecast mean error (bias).



Northern Hemisphere. Scores time-series at **day 1**. Top left panel: Forecast scatter index (standard deviation of the difference normalised by the mean of the observations). Top right panel: Forecast root mean square error (RMSE). Bottom panel: forecast mean error (bias).

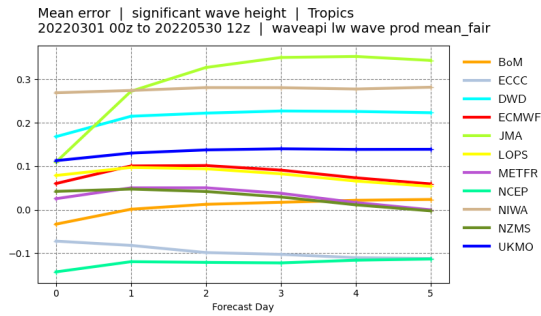
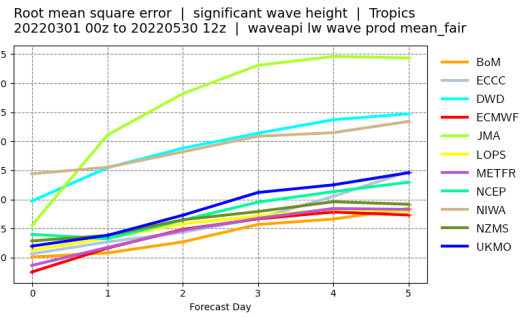
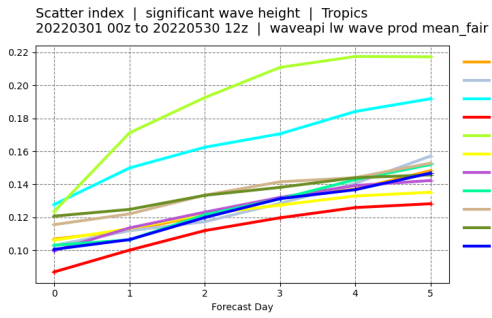
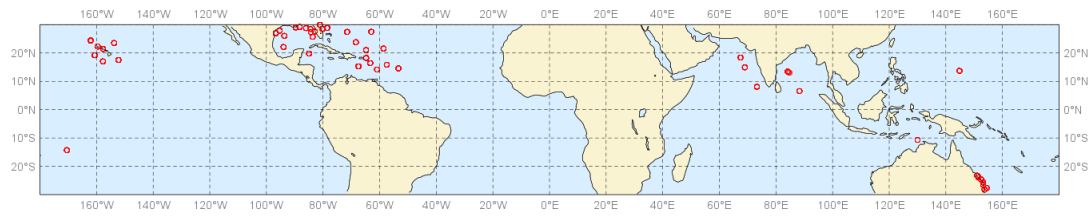


Northern Hemisphere. Scores time-series at **day 3**. Top left panel: Forecast scatter index (standard deviation of the difference normalised by the mean of the observations). Top right panel: Forecast root mean square error (RMSE). Bottom panel: forecast mean error (bias).

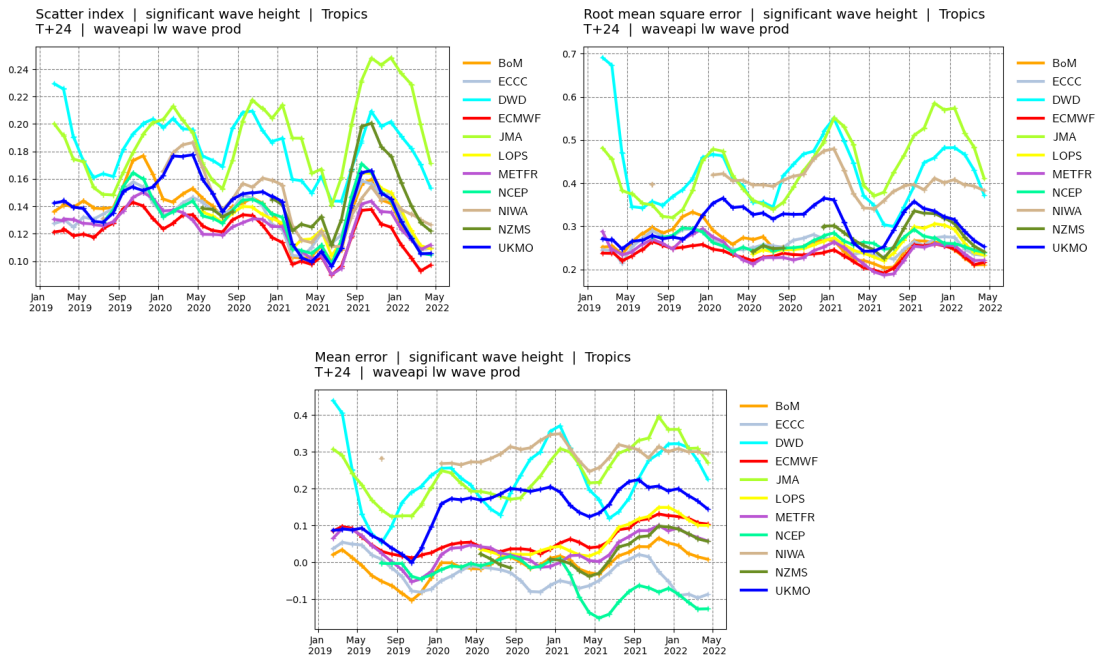


Northern Hemisphere. Scores time-series at **day 5**. Top left panel: Forecast scatter index (standard deviation of the difference normalised by the mean of the observations). Top right panel: Forecast root mean square error (RMSE). Bottom panel: forecast mean error (bias).

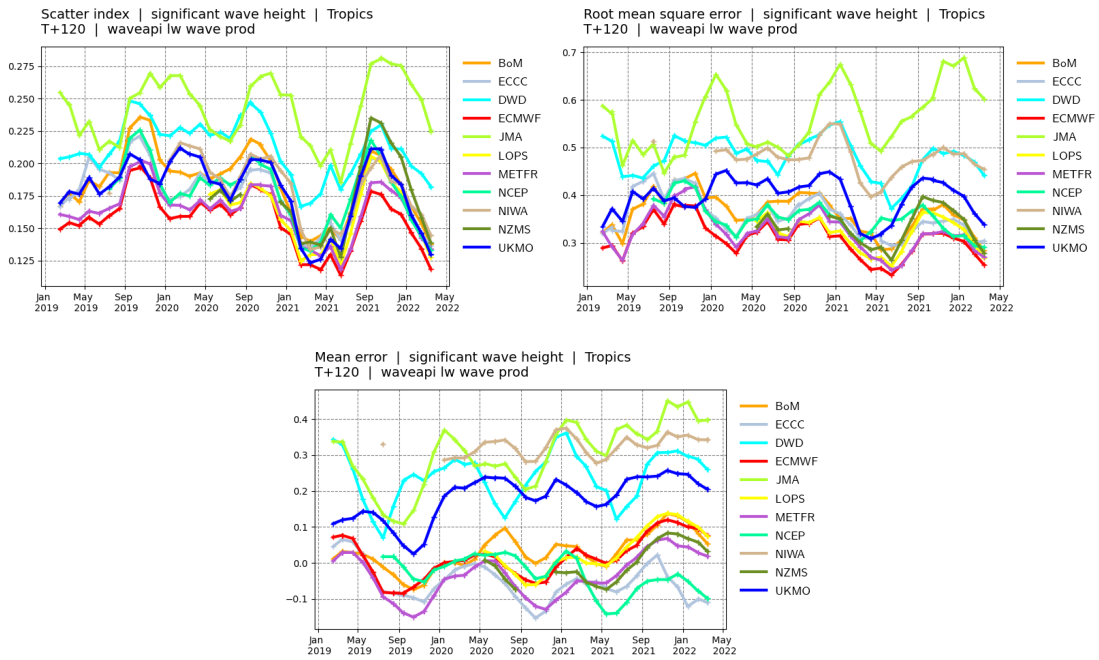
Buoys observations - from 20220301 to 20220530 - (swh)



Tropics. Top panel: observation distribution. Middle left panel: Forecast scatter index (standard deviation of the difference normalised by the mean of the observations). Middle right panel: Forecast root mean square error (RMSE). Bottom panel: forecast mean error (bias).

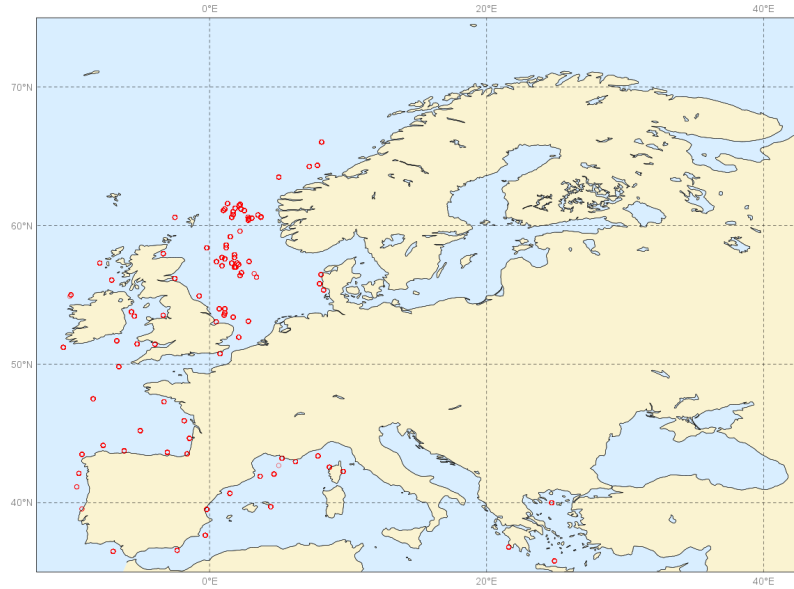


Tropics. Scores time-series at **day 1**. Top left panel: Forecast scatter index (standard deviation of the difference normalised by the mean of the observations). Top right panel: Forecast root mean square error (RMSE). Bottom panel: forecast mean error (bias).

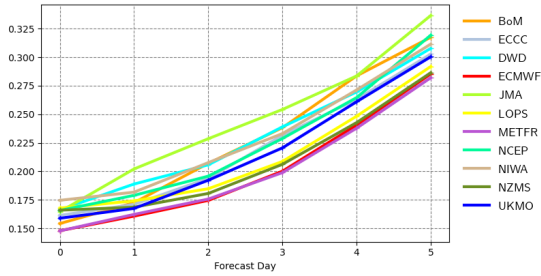


Tropics. Scores time-series at **day 5**. Top left panel: Forecast scatter index (standard deviation of the difference normalised by the mean of the observations). Top right panel: Forecast root mean square error (RMSE). Bottom panel: forecast mean error (bias).

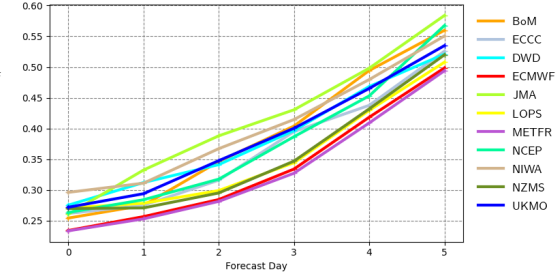
Buoys observations - from 20220301 to 20220530 - (swh)



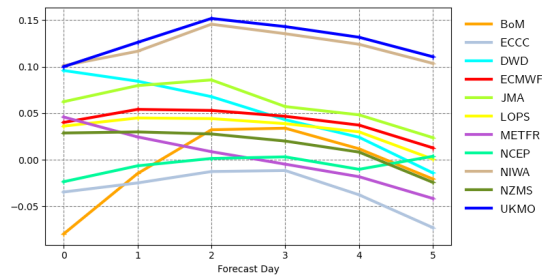
Scatter index | significant wave height | Europe
20220301 00z to 20220530 12z | waveapi lw wave prod mean_fair



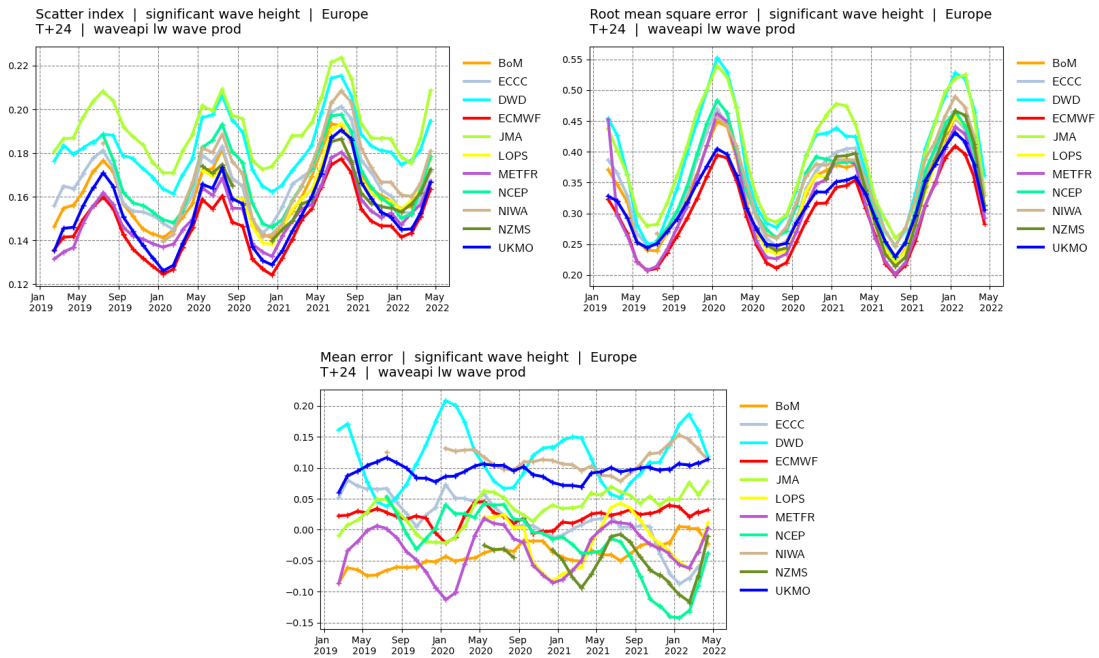
Root mean square error | significant wave height | Europe
20220301 00z to 20220530 12z | waveapi lw wave prod mean_fair



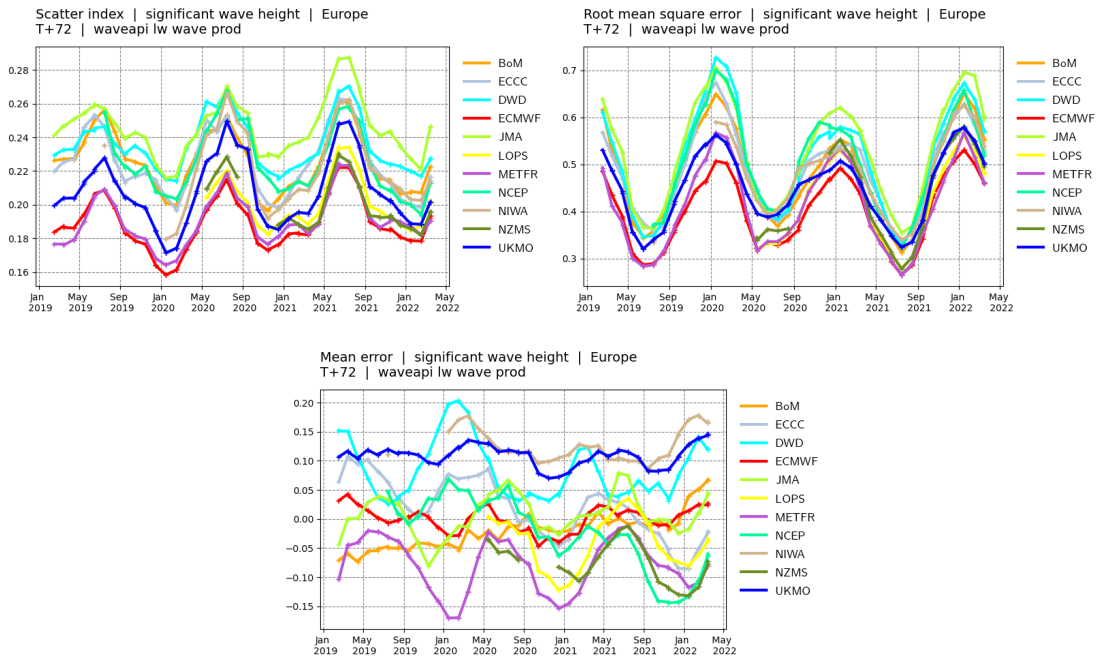
Mean error | significant wave height | Europe
20220301 00z to 20220530 12z | waveapi lw wave prod mean_fair



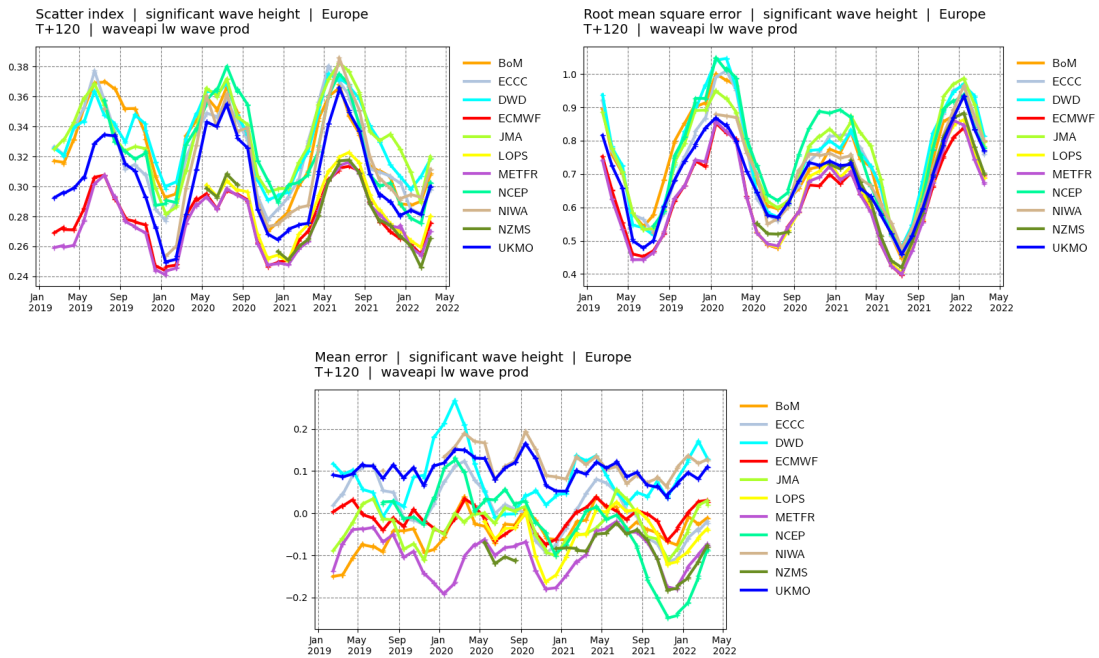
Europe. Top panel: observation distribution. Middle left panel: Forecast scatter index (standard deviation of the difference normalised by the mean of the observations). Middle right panel: Forecast root mean square error (RMSE). Bottom panel: forecast mean error (bias).



Europe. Scores time-series at **day 1**. Top left panel: Forecast scatter index (standard deviation of the difference normalised by the mean of the observations). Top right panel: Forecast root mean square error (RMSE). Bottom panel: forecast mean error (bias).

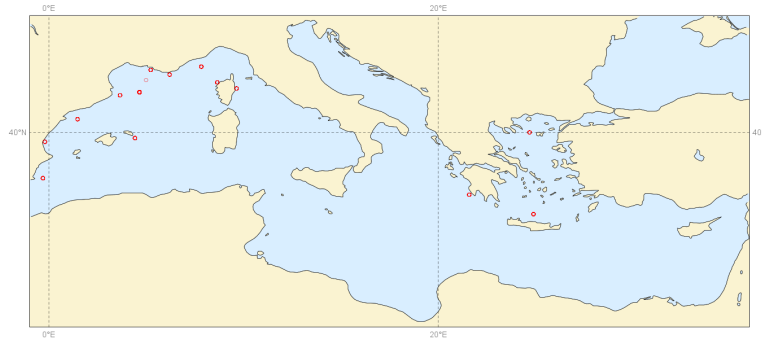


Europe. Scores time-series at **day 3**. Top left panel: Forecast scatter index (standard deviation of the difference normalised by the mean of the observations). Top right panel: Forecast root mean square error (RMSE). Bottom panel: forecast mean error (bias).

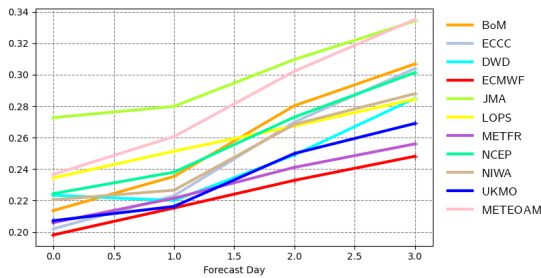


Europe. Scores time-series at **day 5**. Top left panel: Forecast scatter index (standard deviation of the difference normalised by the mean of the observations). Top right panel: Forecast root mean square error (RMSE). Bottom panel: forecast mean error (bias).

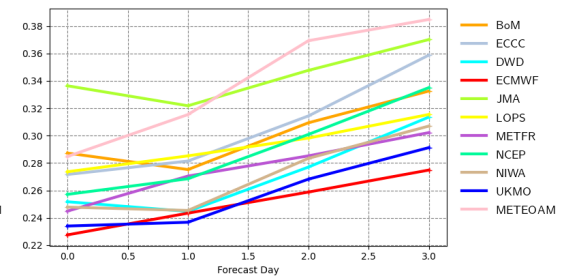
Buoys observations - from 20220301 to 20220530 - (swh)



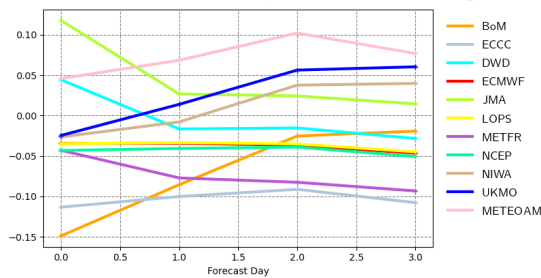
Scatter index | significant wave height | Mediterranean
20220301 00z to 20220530 12z | waveapi lw wave prod mean_fair



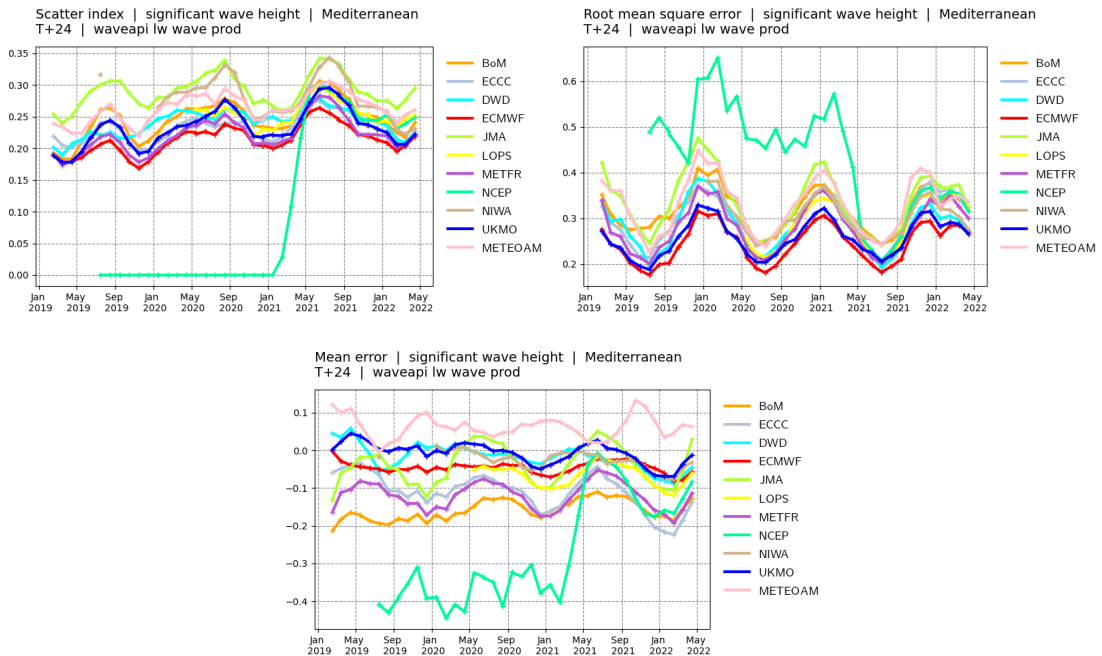
Root mean square error | significant wave height | Mediterranean
20220301 00z to 20220530 12z | waveapi lw wave prod mean_fair



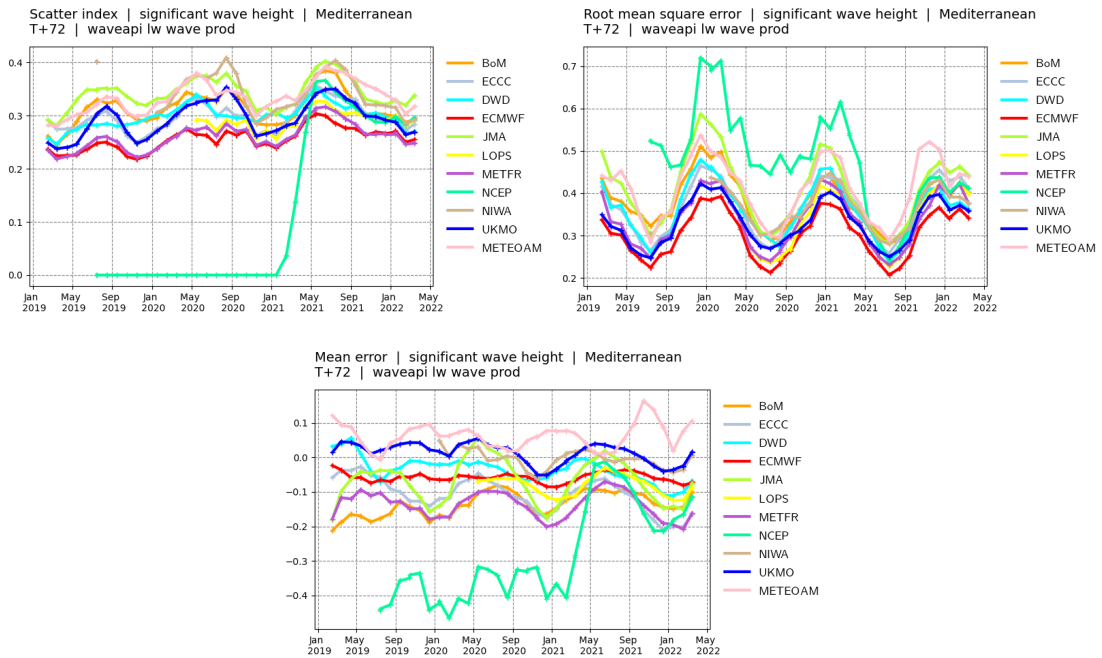
Mean error | significant wave height | Mediterranean
20220301 00z to 20220530 12z | waveapi lw wave prod mean_fair



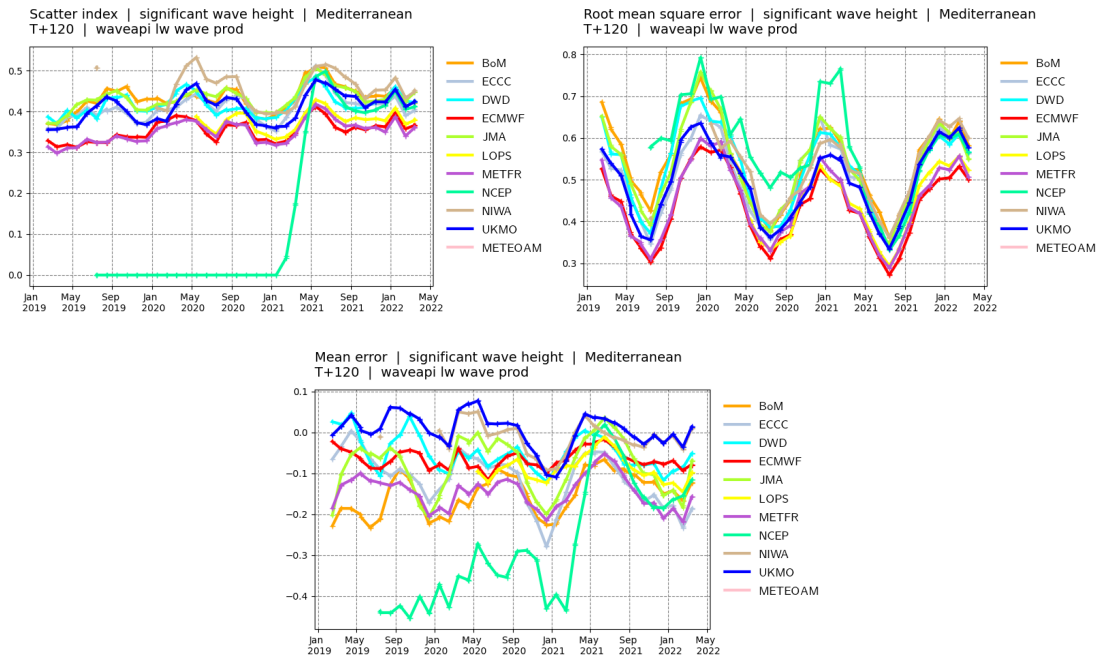
Mediterranean Sea. Top panel: observation distribution. Middle left panel: Forecast scatter index (standard deviation of the difference normalised by the mean of the observations). Middle right panel: Forecast root mean square error (RMSE). Bottom panel: forecast mean error (bias).



Mediterranean Sea. Scores time-series at **day 1**. Top left panel: Forecast scatter index (standard deviation of the difference normalised by the mean of the observations). Top right panel: Forecast root mean square error (RMSE). Bottom panel: forecast mean error (bias).

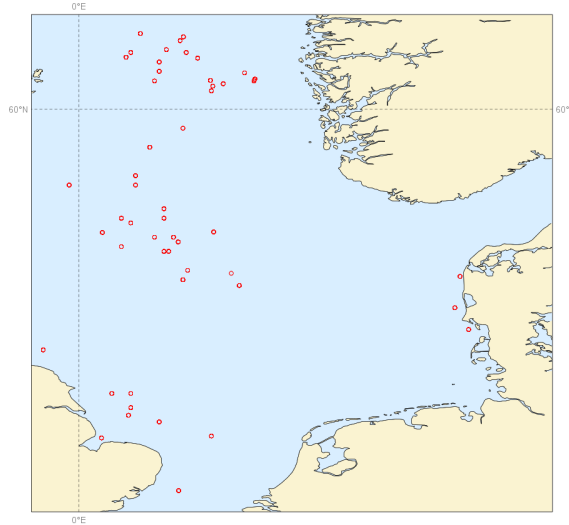


Mediterranean Sea. Scores time-series at **day 3**. Top left panel: Forecast scatter index (standard deviation of the difference normalised by the mean of the observations). Top right panel: Forecast root mean square error (RMSE). Bottom panel: forecast mean error (bias).

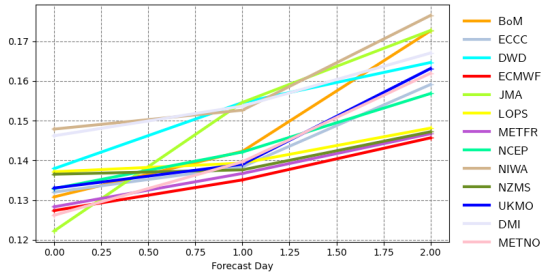


Mediterranean Sea. Scores time-series at **day 5**. Top left panel: Forecast scatter index (standard deviation of the difference normalised by the mean of the observations). Top right panel: Forecast root mean square error (RMSE). Bottom panel: forecast mean error (bias).

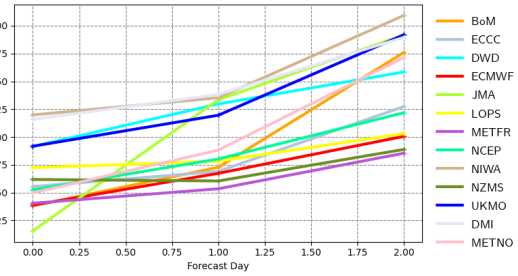
Buoys observations - from 20220301 to 20220530 - (swh)



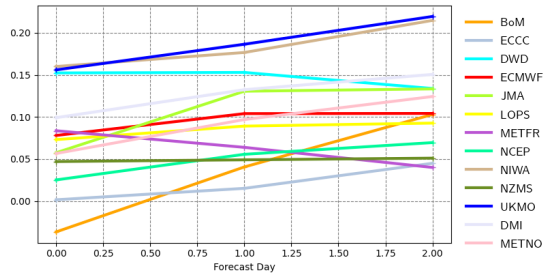
Scatter index | significant wave height | North Sea
20220301 00z to 20220530 12z | waveapi lw wave prod mean_fair



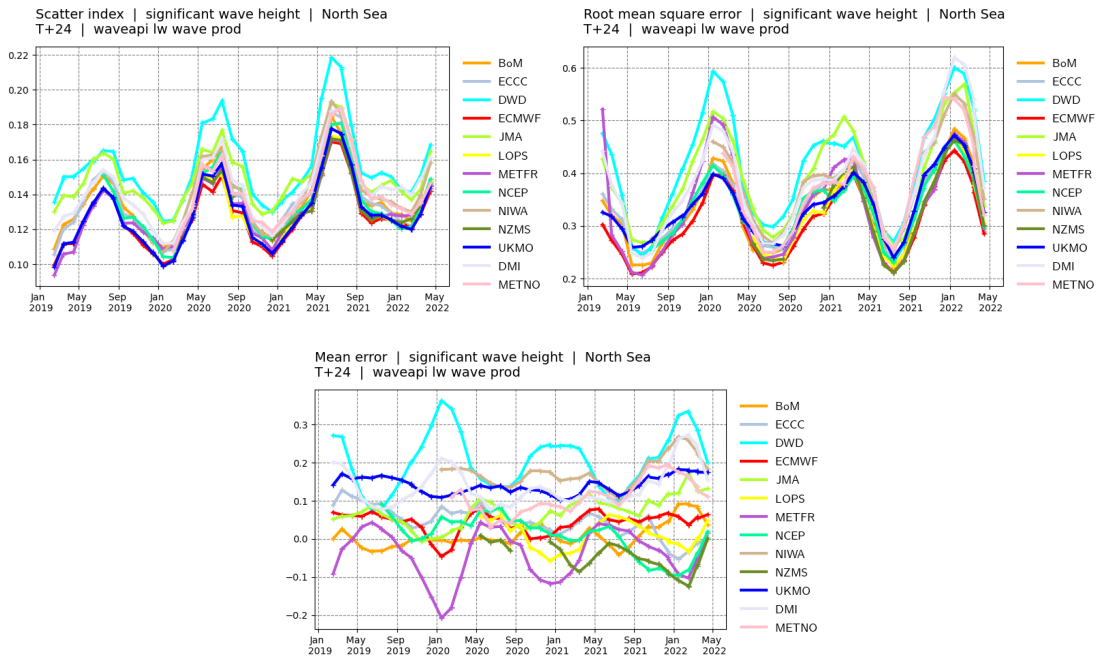
Root mean square error | significant wave height | North Sea
20220301 00z to 20220530 12z | waveapi lw wave prod mean_fair



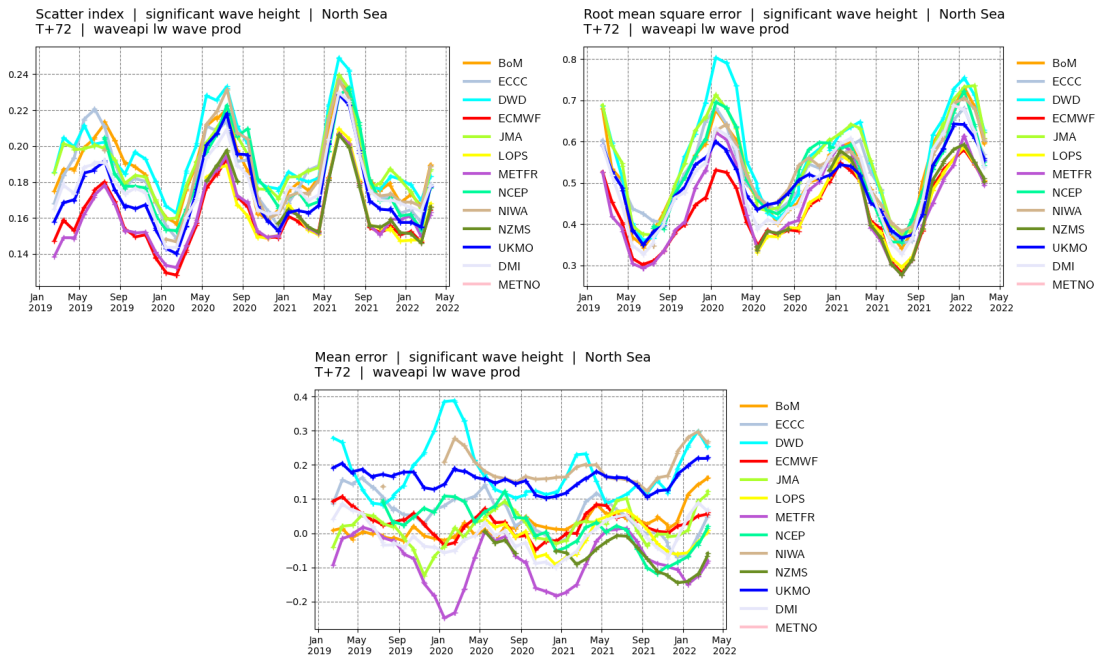
Mean error | significant wave height | North Sea
20220301 00z to 20220530 12z | waveapi lw wave prod mean_fair



North Sea. Top panel: observation distribution. Middle left panel: Forecast scatter index (standard deviation of the difference normalised by the mean of the observations). Middle right panel: Forecast root mean square error (RMSE). Bottom panel: forecast mean error (bias).

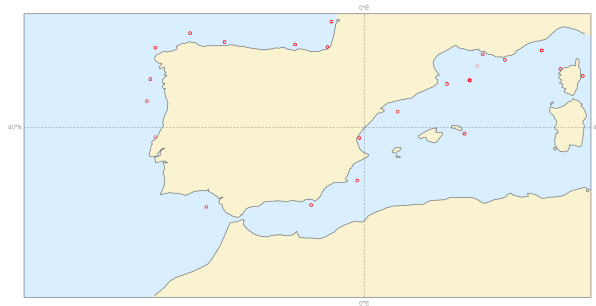


North Sea. Scores time-series at **day 1**. Top left panel: Forecast scatter index (standard deviation of the difference normalised by the mean of the observations). Top right panel: Forecast root mean square error (RMSE). Bottom panel: forecast mean error (bias).

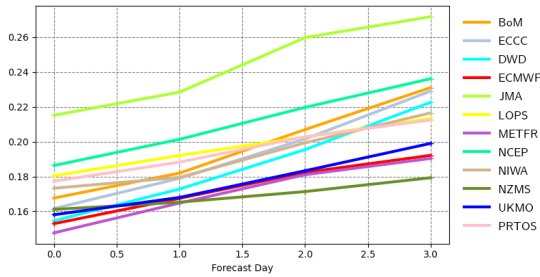


North Sea. Scores time-series at **day 3**. Top left panel: Forecast scatter index (standard deviation of the difference normalised by the mean of the observations). Top right panel: Forecast root mean square error (RMSE). Bottom panel: forecast mean error (bias).

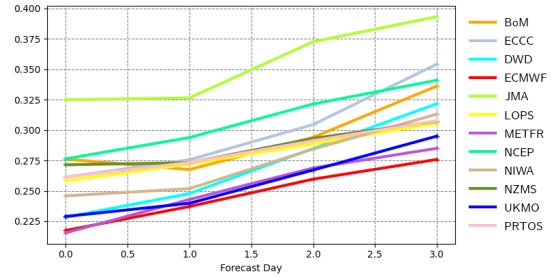
Buoys observations - from 20220301 to 20220530 - (swh)



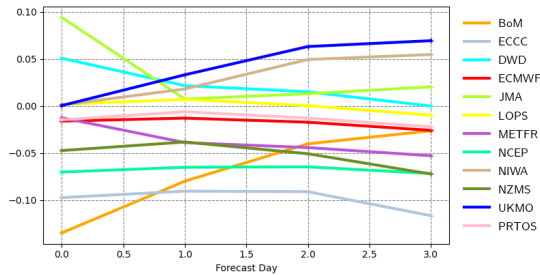
Scatter index | significant wave height | SW Europe
20220301 00z to 20220530 12z | waveapi lw wave prod mean_fair



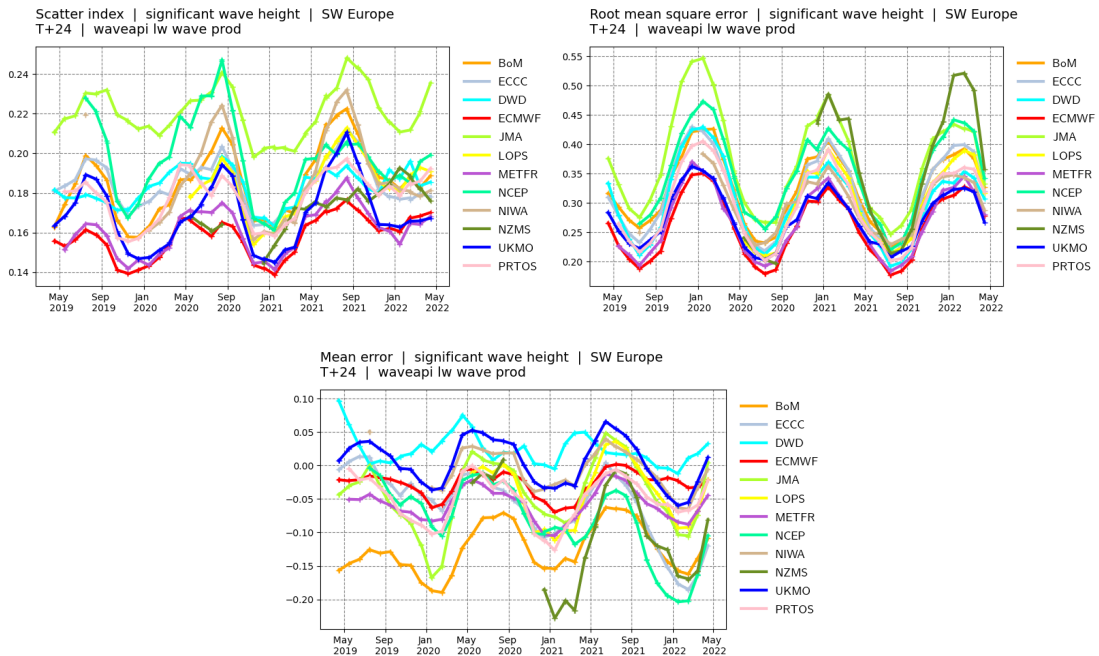
Root mean square error | significant wave height | SW Europe
20220301 00z to 20220530 12z | waveapi lw wave prod mean_fair



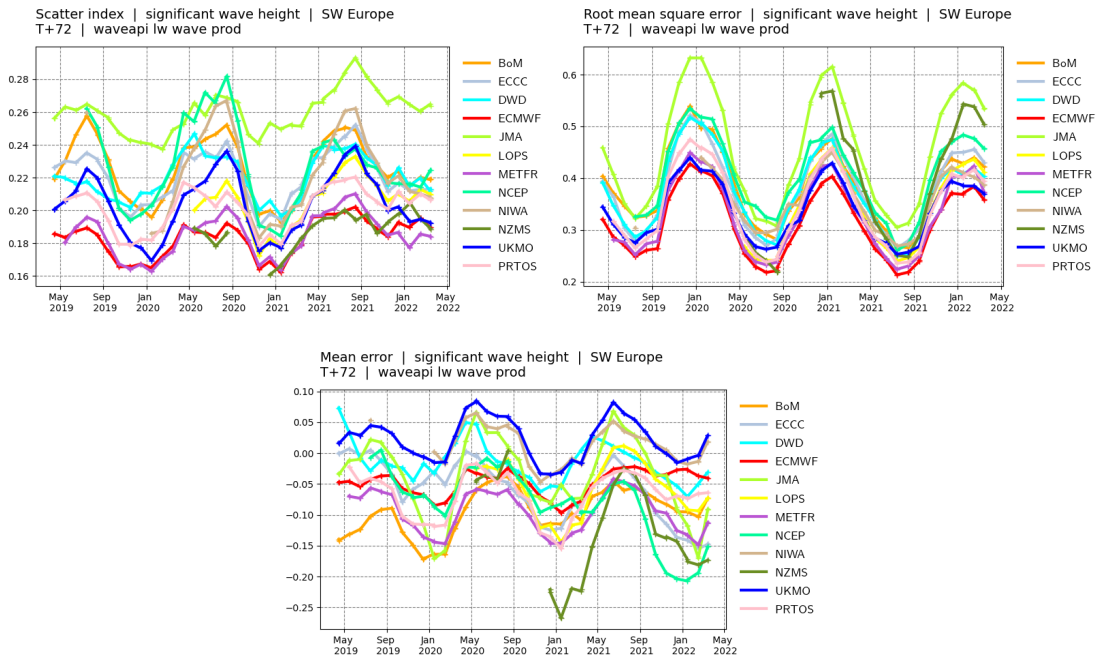
Mean error | significant wave height | SW Europe
20220301 00z to 20220530 12z | waveapi lw wave prod mean_fair



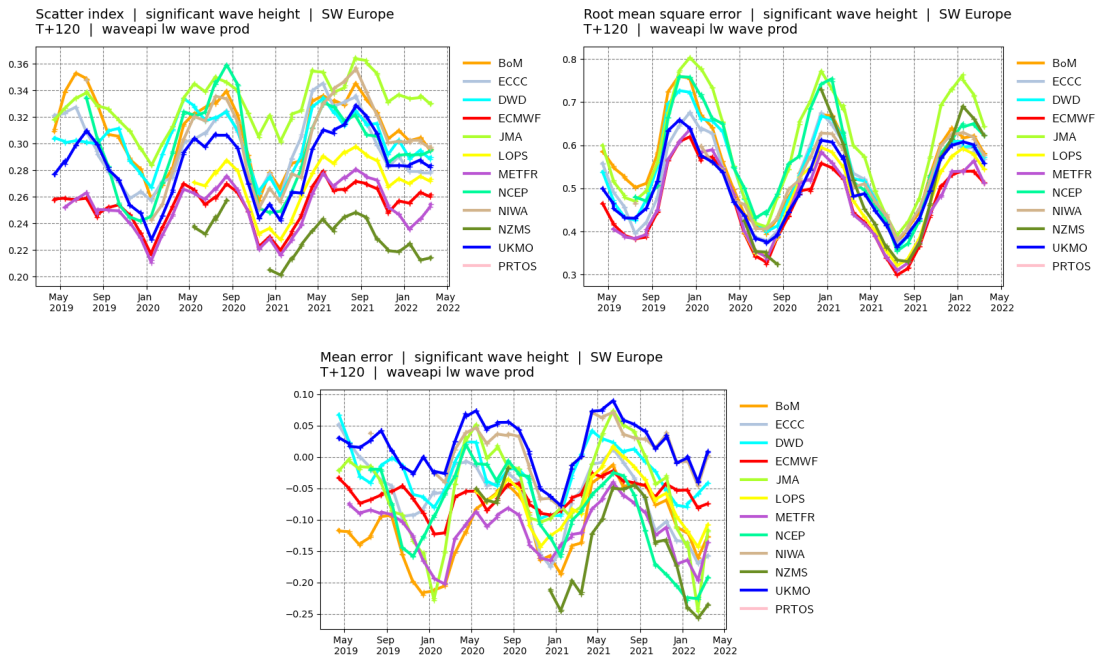
South West Europe. Top panel: observation distribution. Middle left panel: Forecast scatter index (standard deviation of the difference normalised by the mean of the observations). Middle right panel: Forecast root mean square error (RMSE). Bottom panel: forecast mean error (bias).



South West Europe. Scores time-series at **day 1**. Top left panel: Forecast scatter index (standard deviation of the difference normalised by the mean of the observations). Top right panel: Forecast root mean square error (RMSE). Bottom panel: forecast mean error (bias).

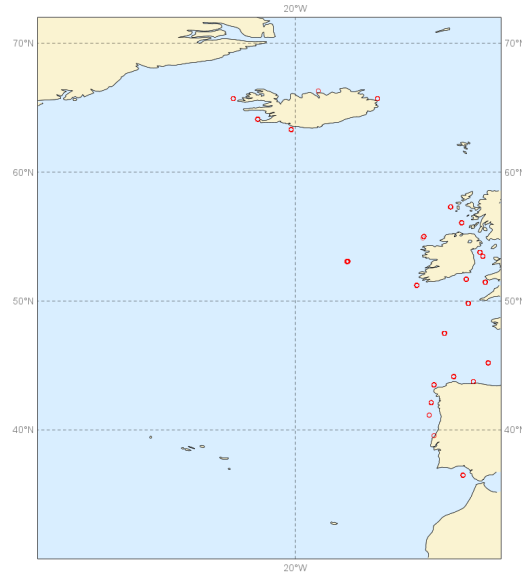


South West Europe. Scores time-series at **day 3**. Top left panel: Forecast scatter index (standard deviation of the difference normalised by the mean of the observations). Top right panel: Forecast root mean square error (RMSE). Bottom panel: forecast mean error (bias).

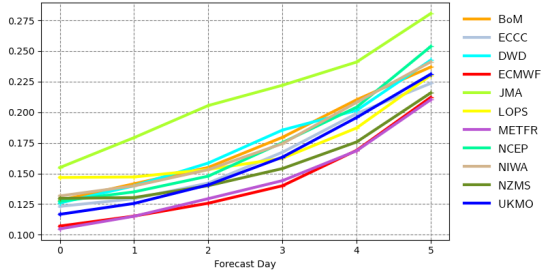


South West Europe. Scores time-series at **day 5**. Top left panel: Forecast scatter index (standard deviation of the difference normalised by the mean of the observations). Top right panel: Forecast root mean square error (RMSE). Bottom panel: forecast mean error (bias).

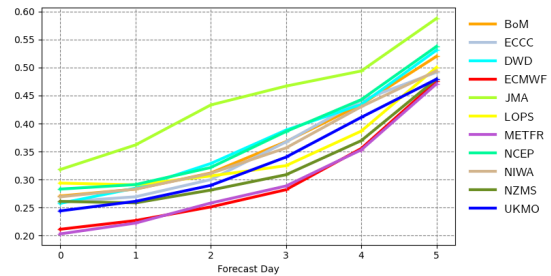
Buoys observations - from 20220301 to 20220530 - (swH)



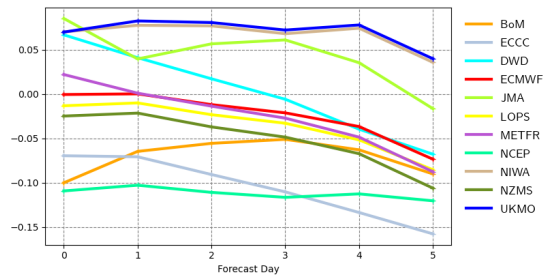
Scatter index | significant wave height | North East Atlantic
20220301 00z to 20220530 12z | waveapi lw wave prod mean_fair



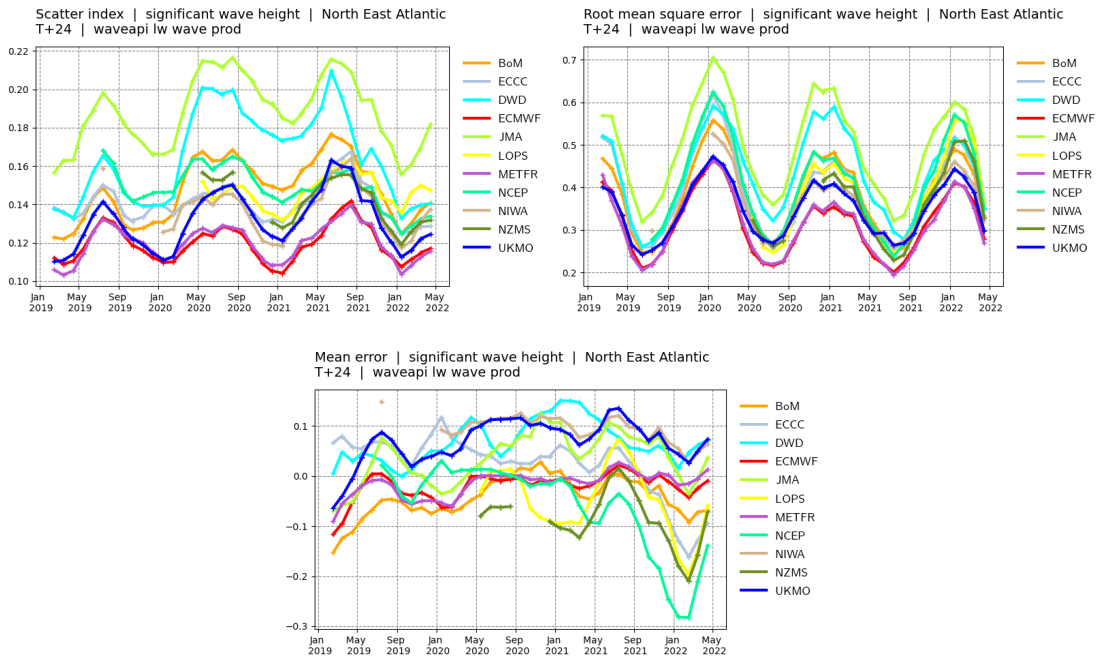
Root mean square error | significant wave height | North East Atlantic
20220301 00z to 20220530 12z | waveapi lw wave prod mean_fair



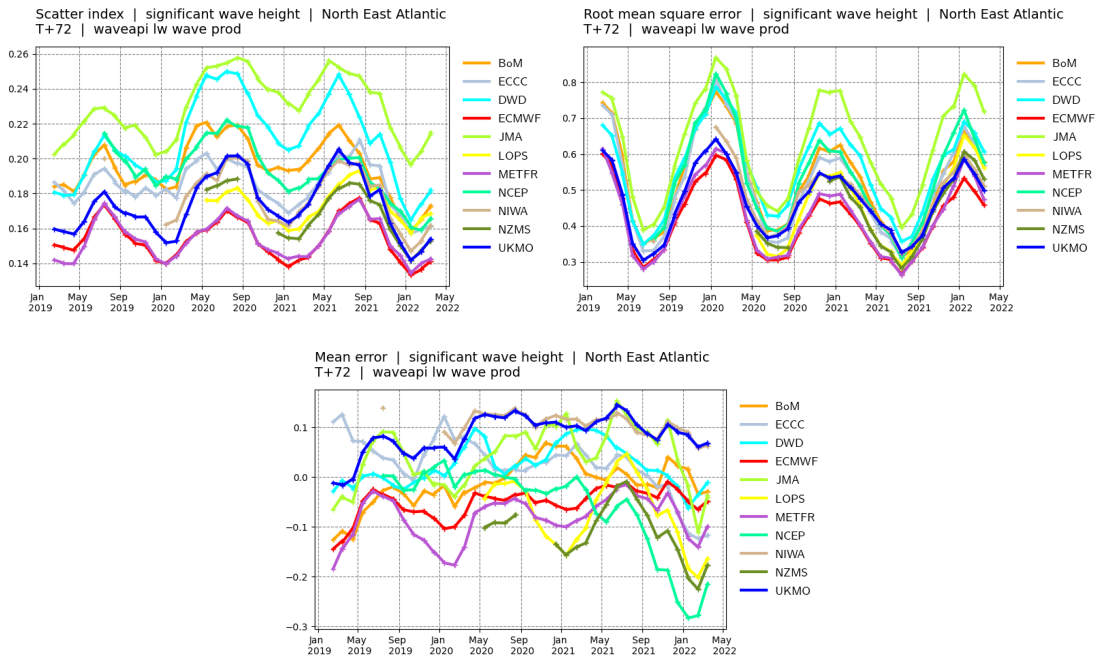
Mean error | significant wave height | North East Atlantic
20220301 00z to 20220530 12z | waveapi lw wave prod mean_fair



North East Atlantic. Top panel: observation distribution. Middle left panel: Forecast scatter index (standard deviation of the difference normalised by the mean of the observations). Middle right panel: Forecast root mean square error (RMSE). Bottom panel: forecast mean error (bias).

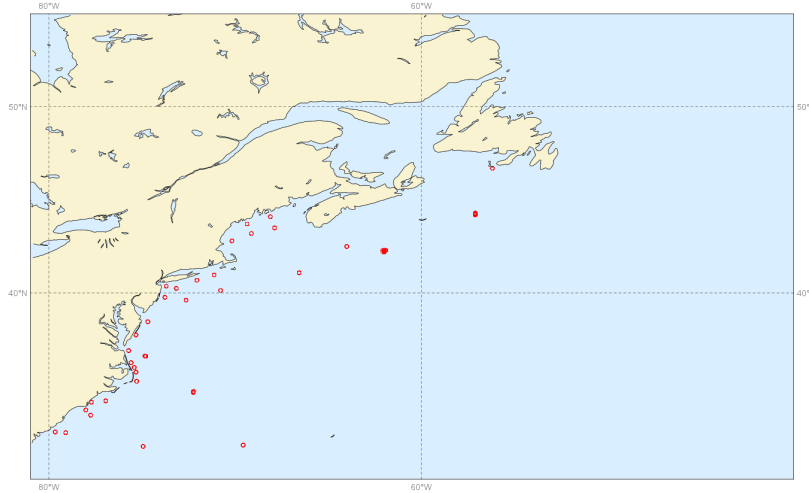


North East Atlantic. Scores time-series at **day 1**. Top left panel: Forecast scatter index (standard deviation of the difference normalised by the mean of the observations). Top right panel: Forecast root mean square error (RMSE). Bottom panel: forecast mean error (bias).

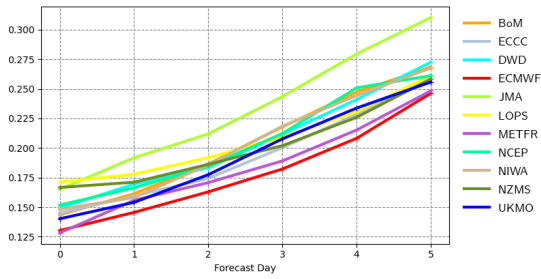


North East Atlantic. Scores time-series at **day 3**. Top left panel: Forecast scatter index (standard deviation of the difference normalised by the mean of the observations). Top right panel: Forecast root mean square error (RMSE). Bottom panel: forecast mean error (bias).

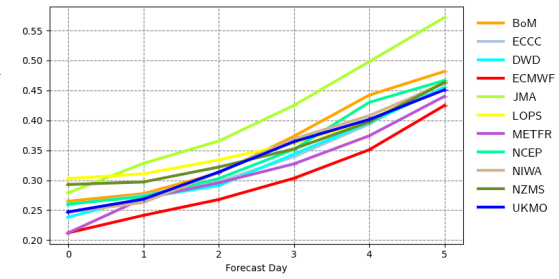
Buoys observations - from 20220301 to 20220530 - (swH)



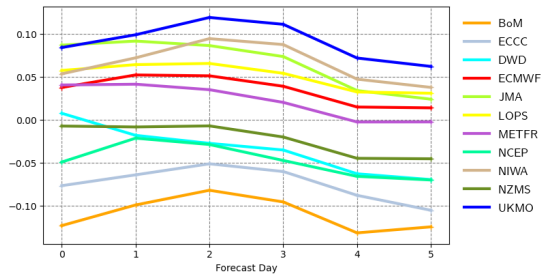
Scatter index | significant wave height | North West Atlantic
20220301 00z to 20220530 12z | waveapi lw wave prod mean_fair



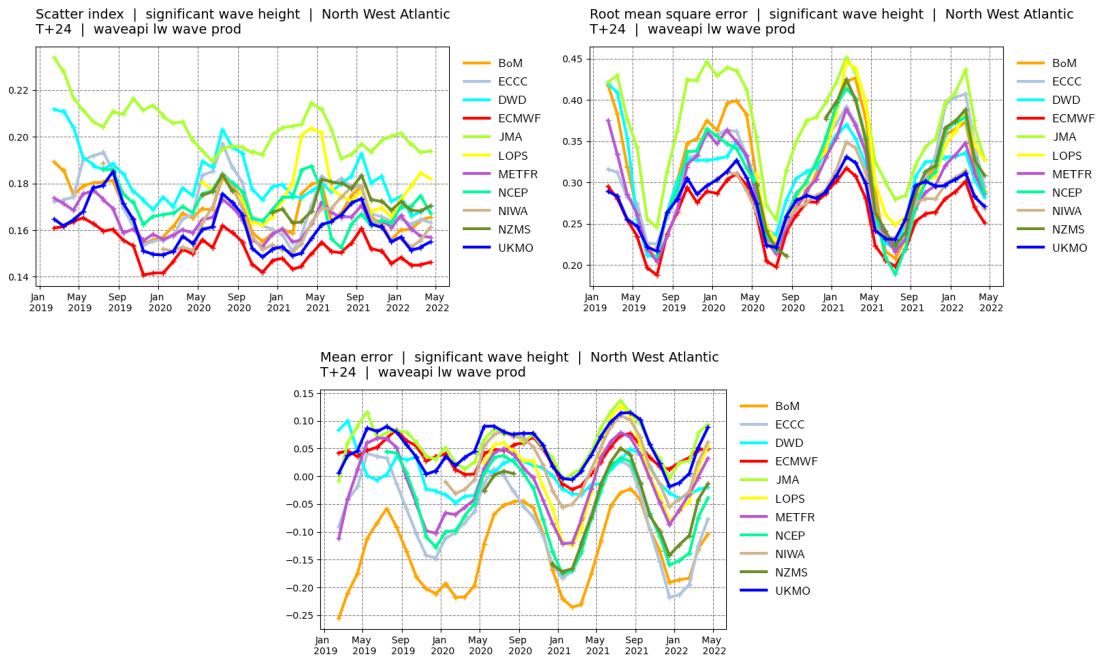
Root mean square error | significant wave height | North West Atlantic
20220301 00z to 20220530 12z | waveapi lw wave prod mean_fair



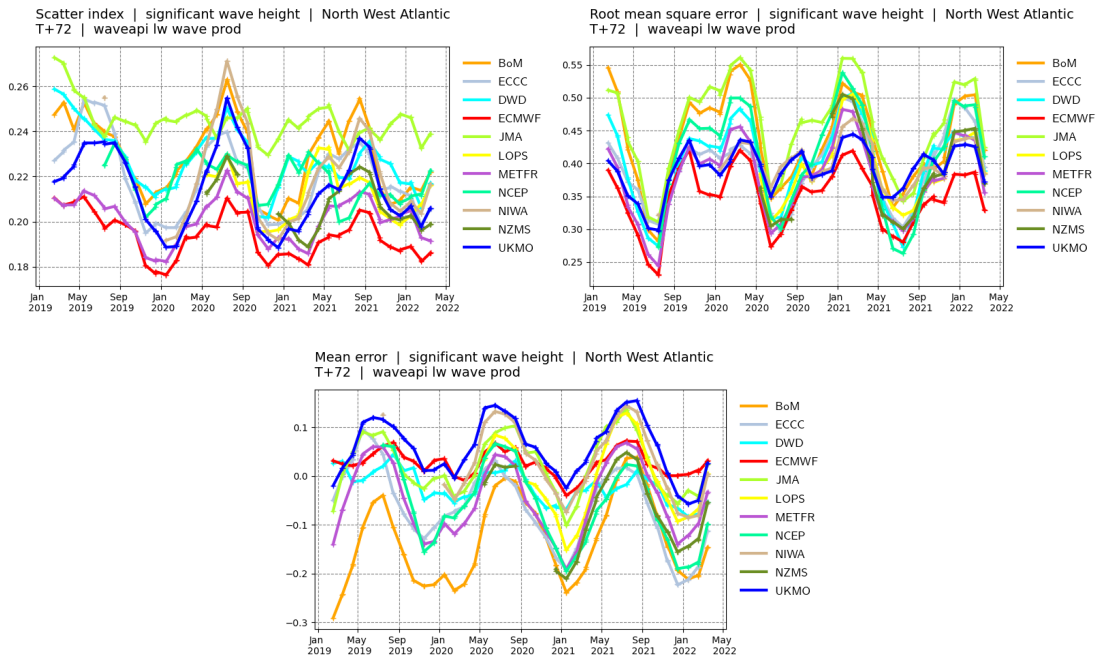
Mean error | significant wave height | North West Atlantic
20220301 00z to 20220530 12z | waveapi lw wave prod mean_fair



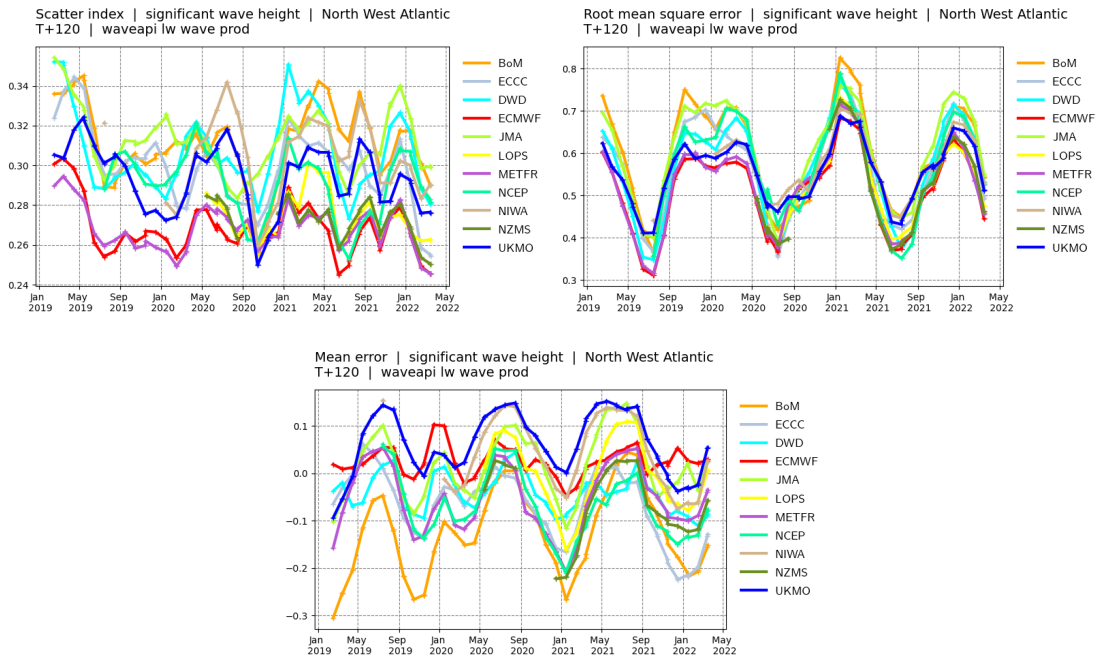
North West Atlantic. Top panel: observation distribution. Middle left panel: Forecast scatter index (standard deviation of the difference normalised by the mean of the observations). Middle right panel: Forecast root mean square error (RMSE). Bottom panel: forecast mean error (bias).



North West Atlantic. Scores time-series at **day 1**. Top left panel: Forecast scatter index (standard deviation of the difference normalised by the mean of the observations). Top right panel: Forecast root mean square error (RMSE). Bottom panel: forecast mean error (bias).

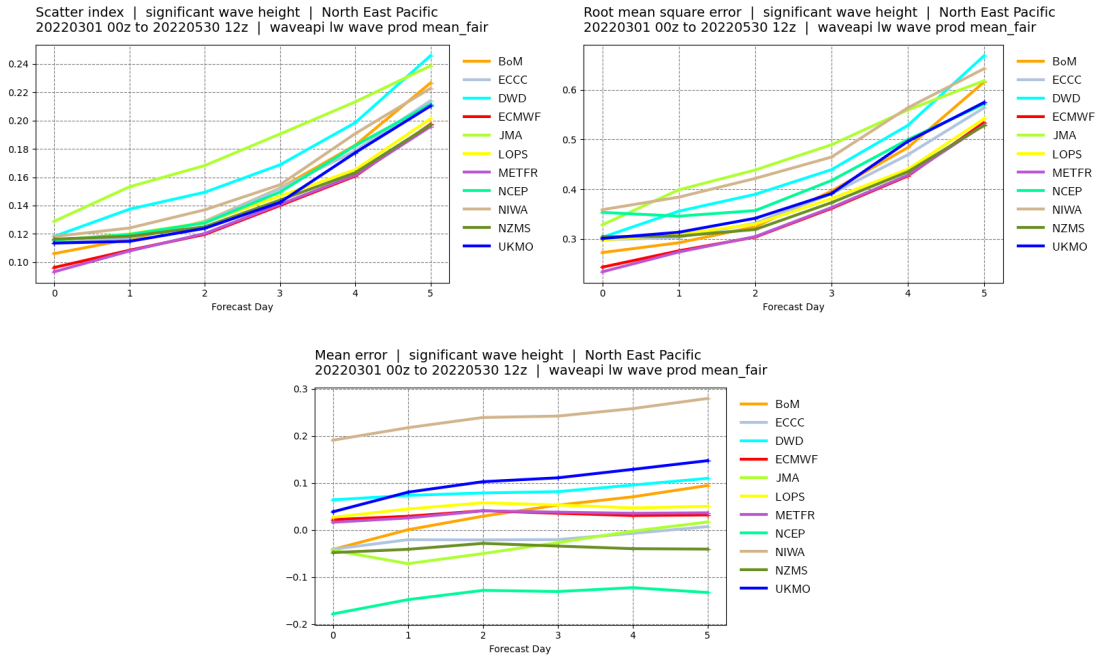
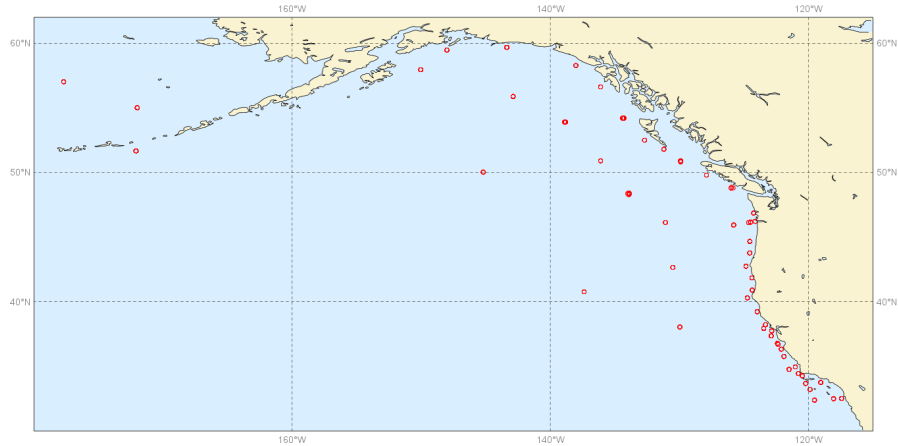


North West Atlantic. Scores time-series at **day 3**. Top left panel: Forecast scatter index (standard deviation of the difference normalised by the mean of the observations). Top right panel: Forecast root mean square error (RMSE). Bottom panel: forecast mean error (bias).

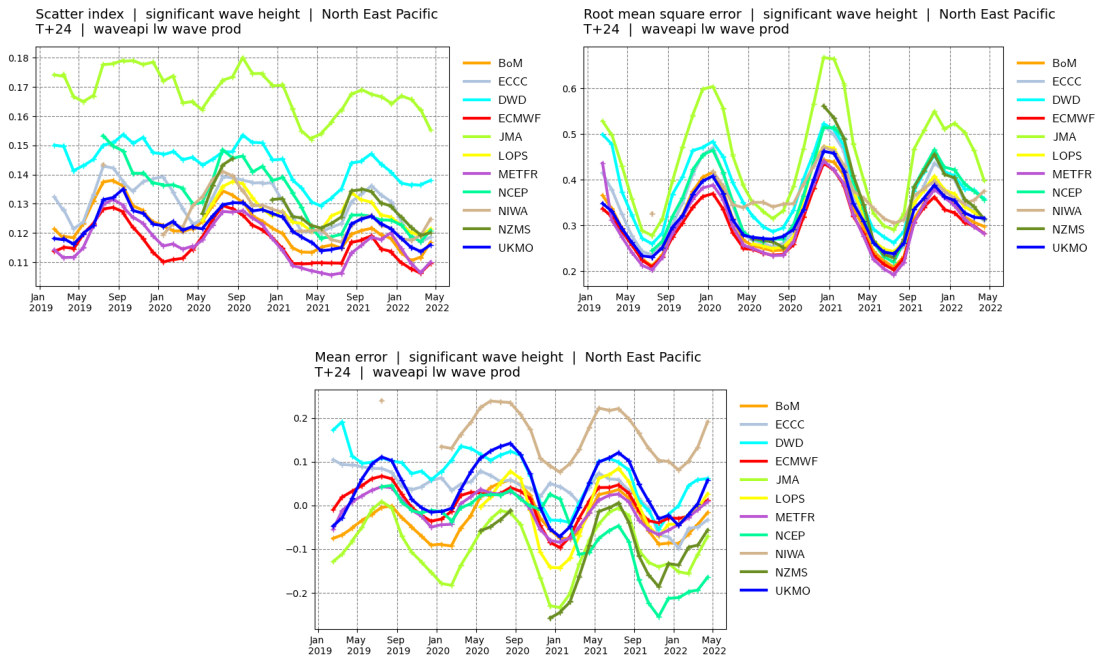


North West Atlantic. Scores time-series at **day 5**. Top left panel: Forecast scatter index (standard deviation of the difference normalised by the mean of the observations). Top right panel: Forecast root mean square error (RMSE). Bottom panel: forecast mean error (bias).

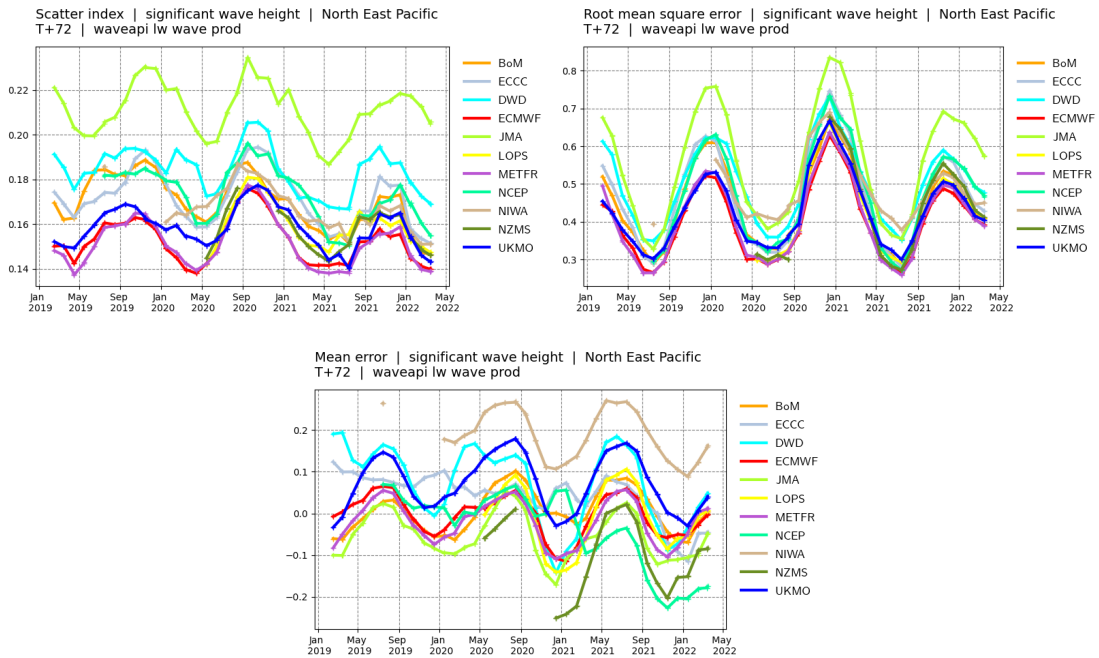
Buoys observations - from 20220301 to 20220530 - (swh)



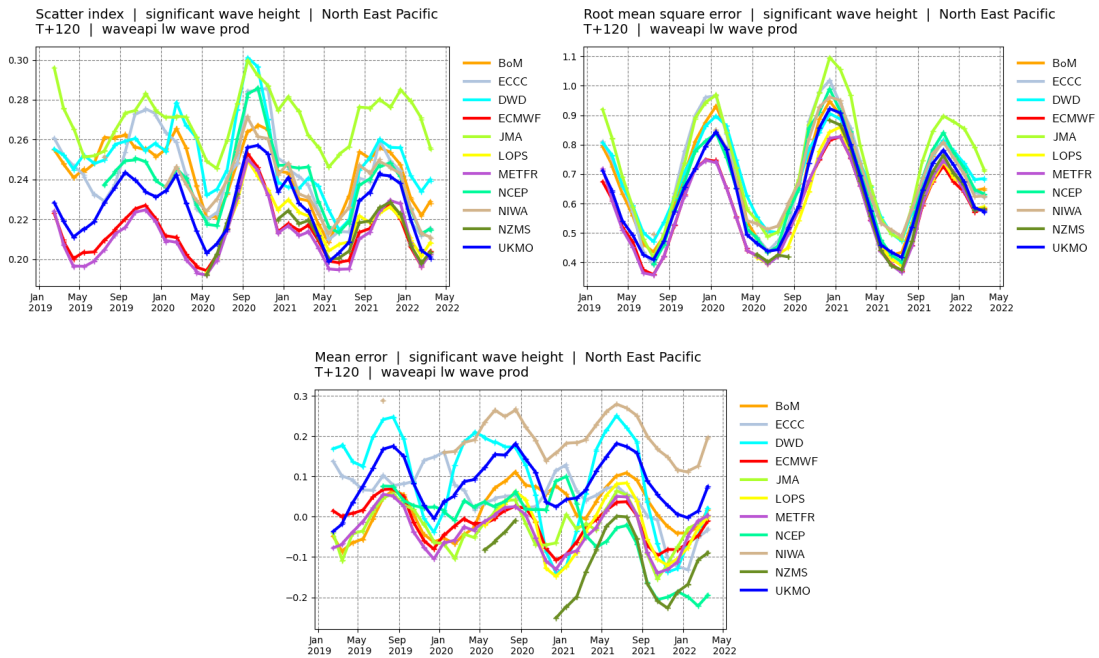
North East Pacific. Top panel: observation distribution. Middle left panel: Forecast scatter index (standard deviation of the difference normalised by the mean of the observations). Middle right panel: Forecast root mean square error (RMSE). Bottom panel: forecast mean error (bias).



North East Pacific. Scores time-series at **day 1**. Top left panel: Forecast scatter index (standard deviation of the difference normalised by the mean of the observations). Top right panel: Forecast root mean square error (RMSE). Bottom panel: forecast mean error (bias).

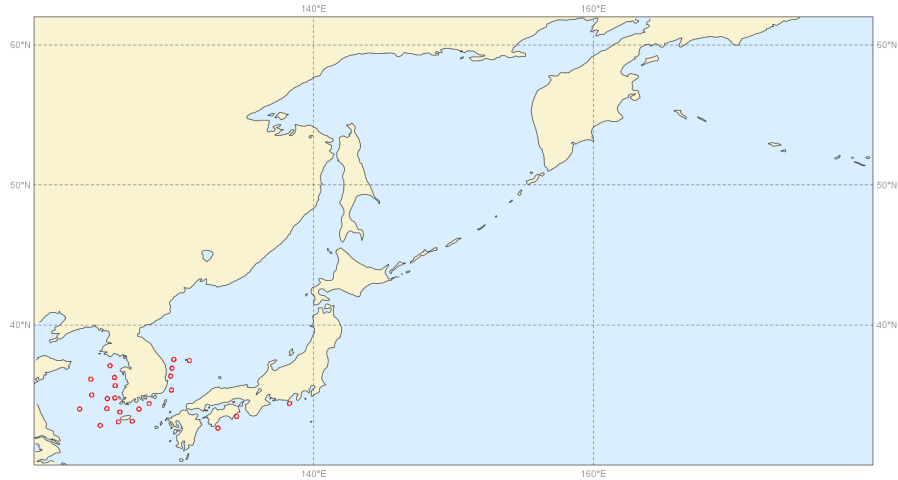


North East Pacific. Scores time-series at **day 3**. Top left panel: Forecast scatter index (standard deviation of the difference normalised by the mean of the observations). Top right panel: Forecast root mean square error (RMSE). Bottom panel: forecast mean error (bias).

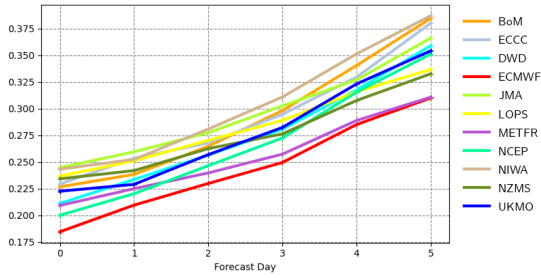


North East Pacific. Scores time-series at **day 5**. Top left panel: Forecast scatter index (standard deviation of the difference normalised by the mean of the observations). Top right panel: Forecast root mean square error (RMSE). Bottom panel: forecast mean error (bias).

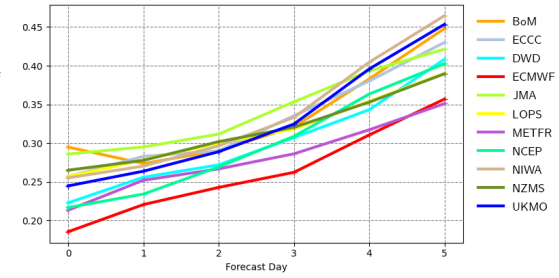
Buoys observations - from 20220301 to 20220530 - (swh)



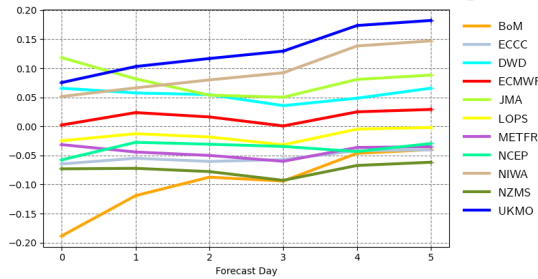
Scatter index | significant wave height | North West Pacific
20220301 00z to 20220530 12z | waveapi lw wave prod mean_fair



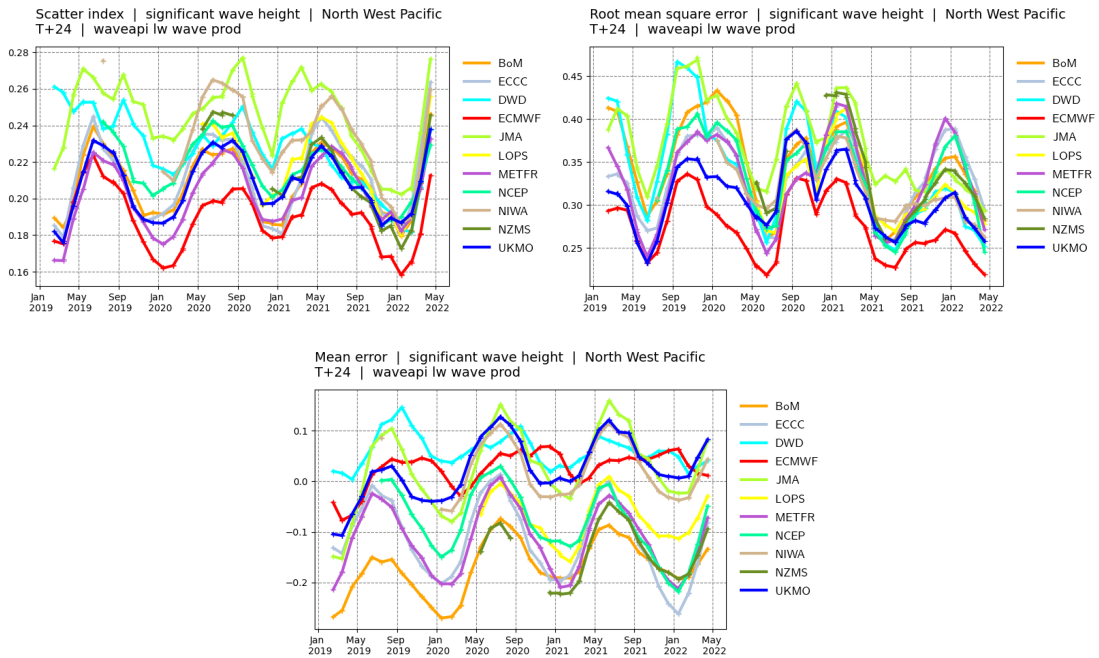
Root mean square error | significant wave height | North West Pacific
20220301 00z to 20220530 12z | waveapi lw wave prod mean_fair



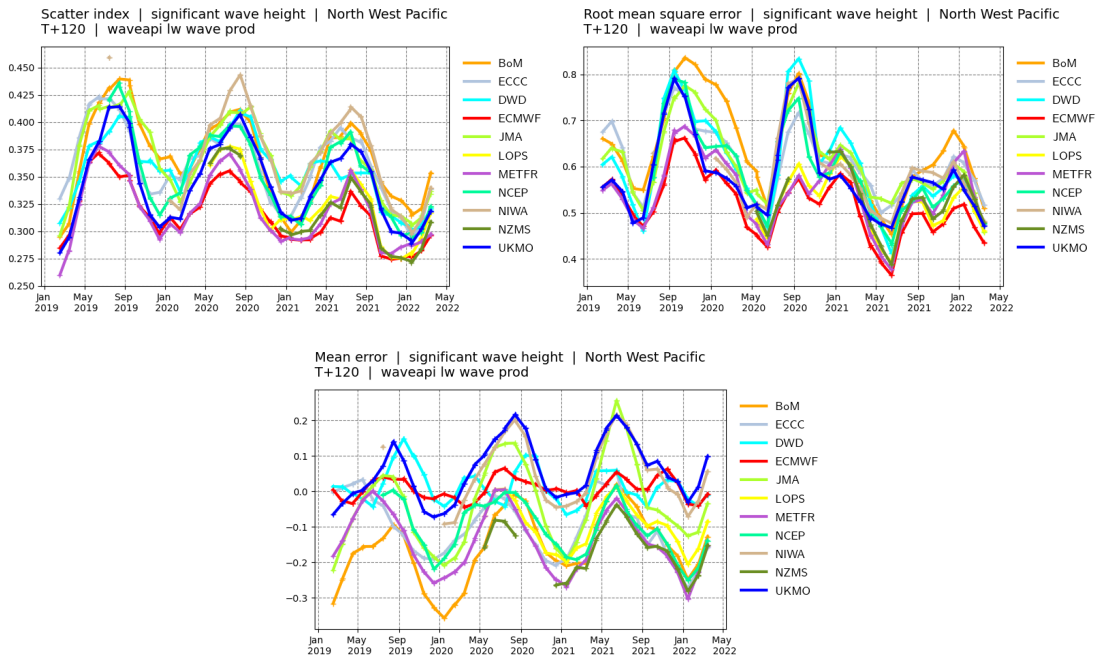
Mean error | significant wave height | North West Pacific
20220301 00z to 20220530 12z | waveapi lw wave prod mean_fair



North West Pacific. Top panel: observation distribution. Middle left panel: Forecast scatter index (standard deviation of the difference normalised by the mean of the observations). Middle right panel: Forecast root mean square error (RMSE). Bottom panel: forecast mean error (bias).

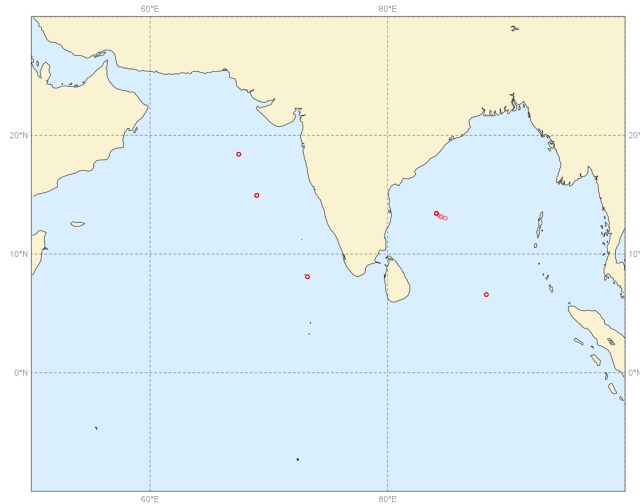


North West Pacific. Scores time-series at **day 1**. Top left panel: Forecast scatter index (standard deviation of the difference normalised by the mean of the observations). Top right panel: Forecast root mean square error (RMSE). Bottom panel: forecast mean error (bias).

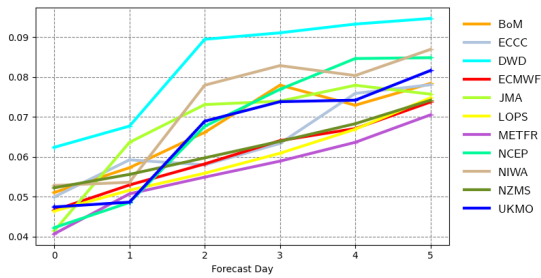


North West Pacific. Scores time-series at **day 5**. Top left panel: Forecast scatter index (standard deviation of the difference normalised by the mean of the observations). Top right panel: Forecast root mean square error (RMSE). Bottom panel: forecast mean error (bias).

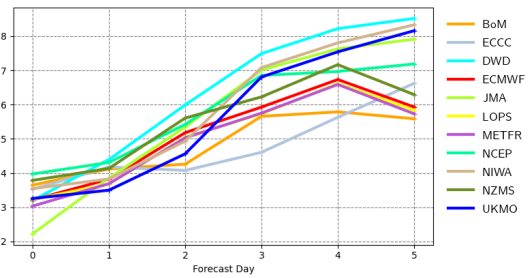
Buoys observations - from 20220301 to 20220530 - (swh)



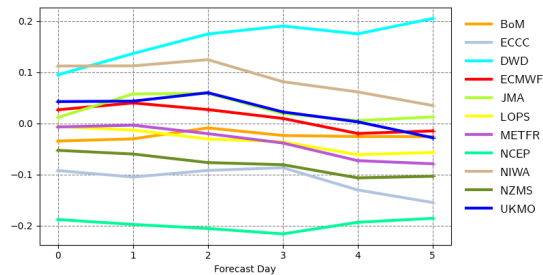
Scatter index | significant wave height | Indian Ocean
20220301 00z to 20220530 12z | waveapi lw wave prod mean_fair



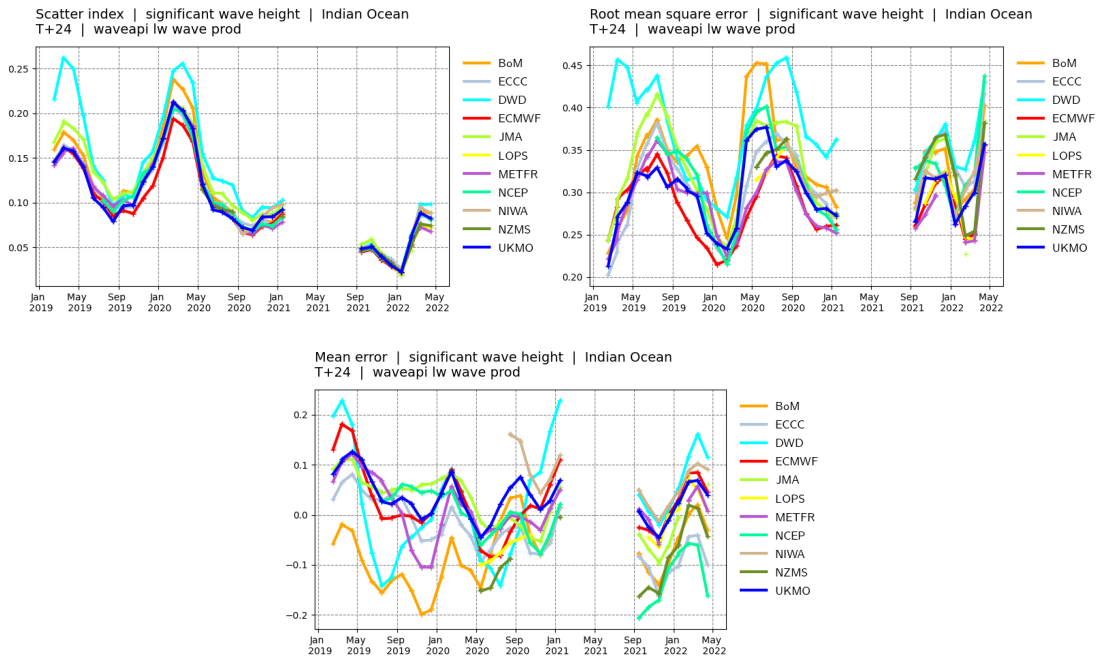
Root mean square error | significant wave height | Indian Ocean
20220301 00z to 20220530 12z | waveapi lw wave prod mean_fair



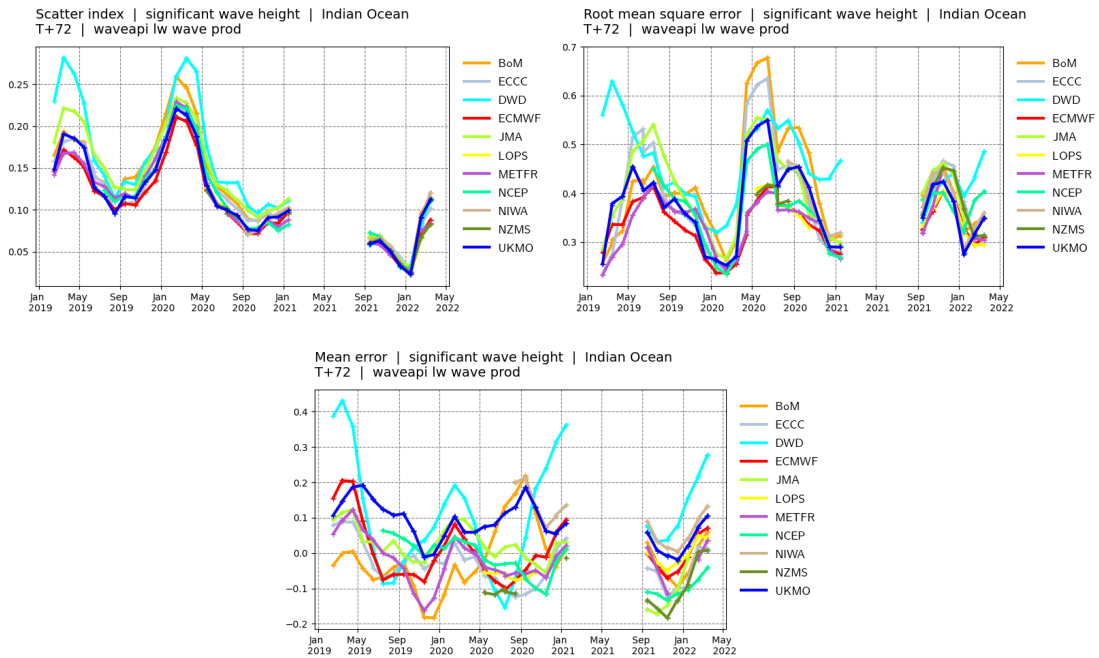
Mean error | significant wave height | Indian Ocean
20220301 00z to 20220530 12z | waveapi lw wave prod mean_fair



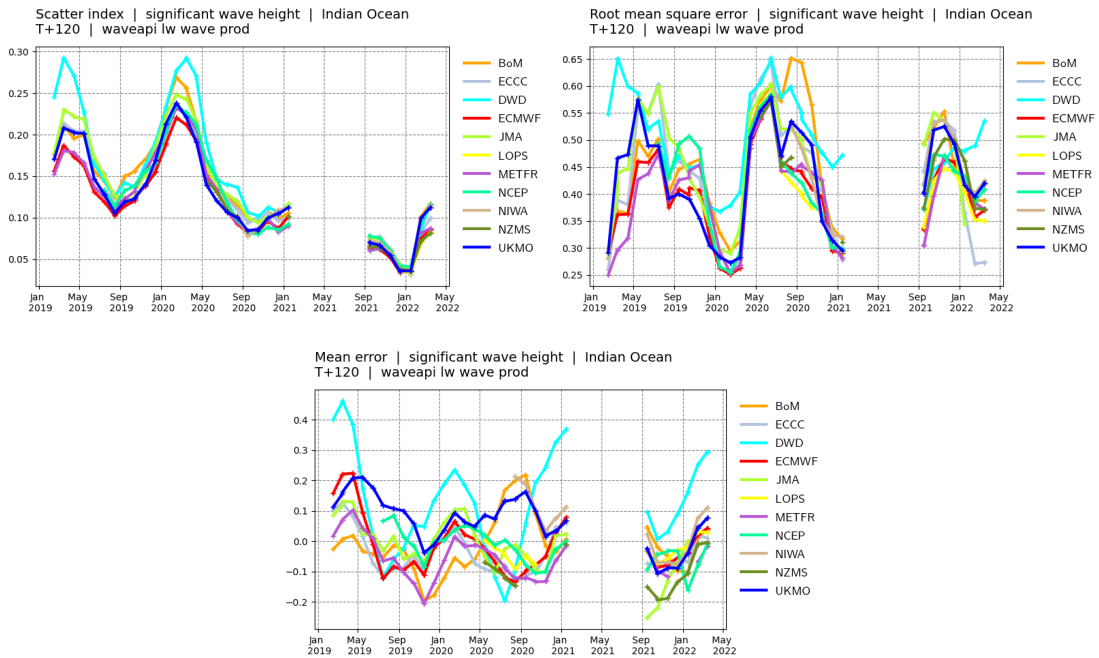
Indian Ocean. Top panel: observation distribution. Middle left panel: Forecast scatter index (standard deviation of the difference normalised by the mean of the observations). Middle right panel: Forecast root mean square error (RMSE). Bottom panel: forecast mean error (bias).



Indian Ocean. Scores time-series at **day 1**. Top left panel: Forecast scatter index (standard deviation of the difference normalised by the mean of the observations). Top right panel: Forecast root mean square error (RMSE). Bottom panel: forecast mean error (bias).

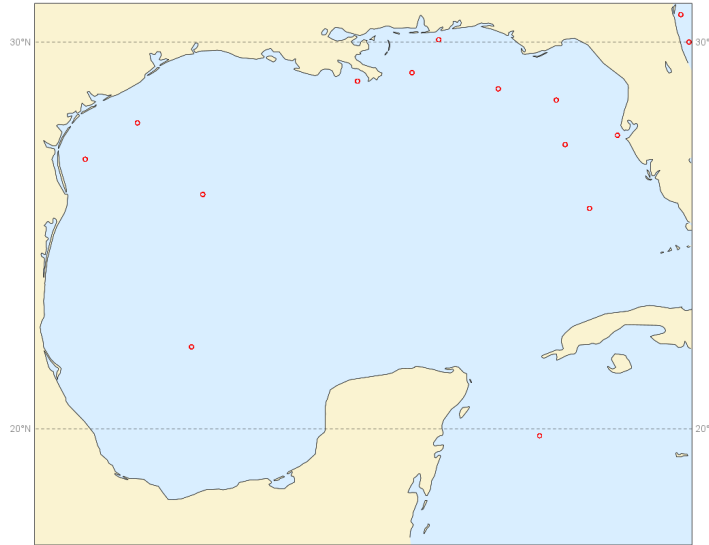


Indian Ocean. Scores time-series at **day 3**. Top left panel: Forecast scatter index (standard deviation of the difference normalised by the mean of the observations). Top right panel: Forecast root mean square error (RMSE). Bottom panel: forecast mean error (bias).

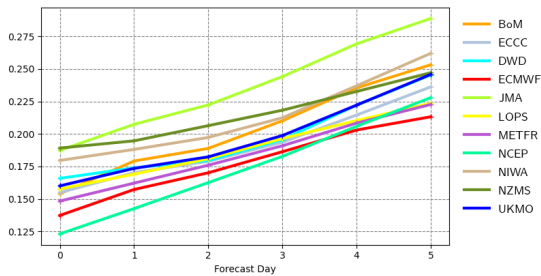


Indian Ocean. Scores time-series at **day 5**. Top left panel: Forecast scatter index (standard deviation of the difference normalised by the mean of the observations). Top right panel: Forecast root mean square error (RMSE). Bottom panel: forecast mean error (bias).

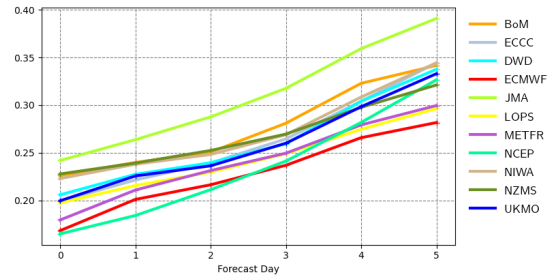
Buoys observations - from 20220301 to 20220530 - (swh)



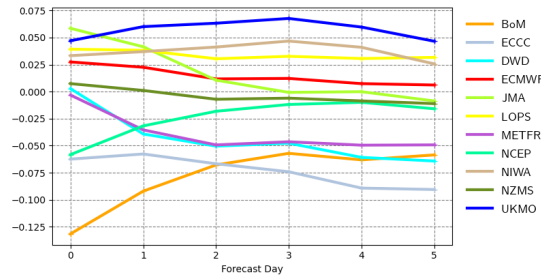
Scatter index | significant wave height | Gulf of Mexico
20220301 00z to 20220530 12z | waveapi lw wave prod mean_fair



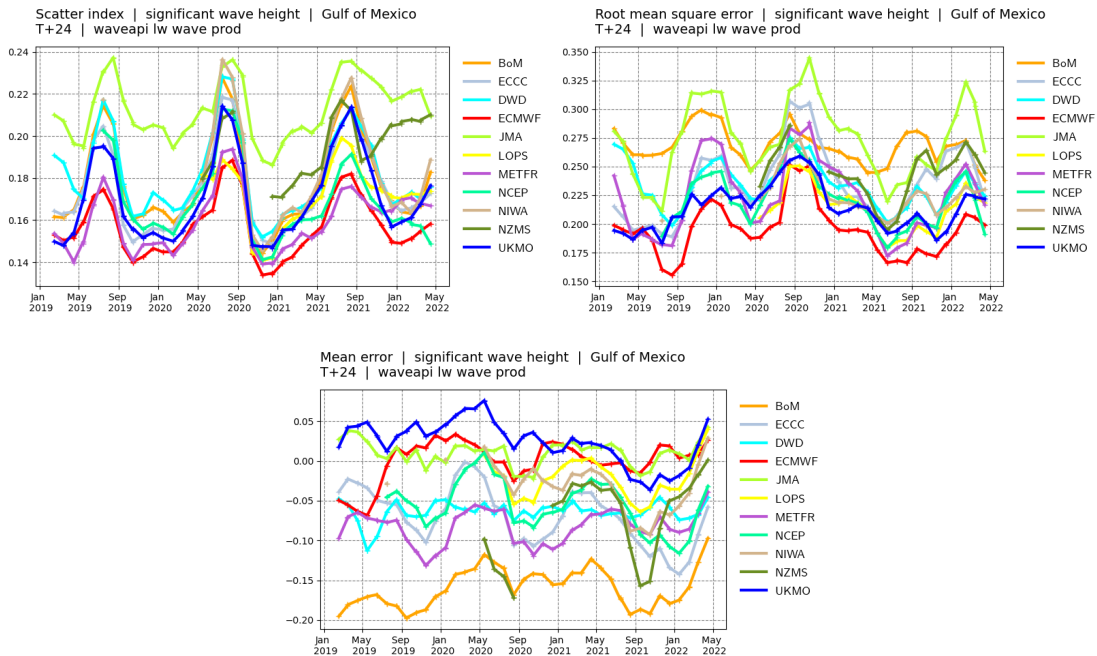
Root mean square error | significant wave height | Gulf of Mexico
20220301 00z to 20220530 12z | waveapi lw wave prod mean_fair



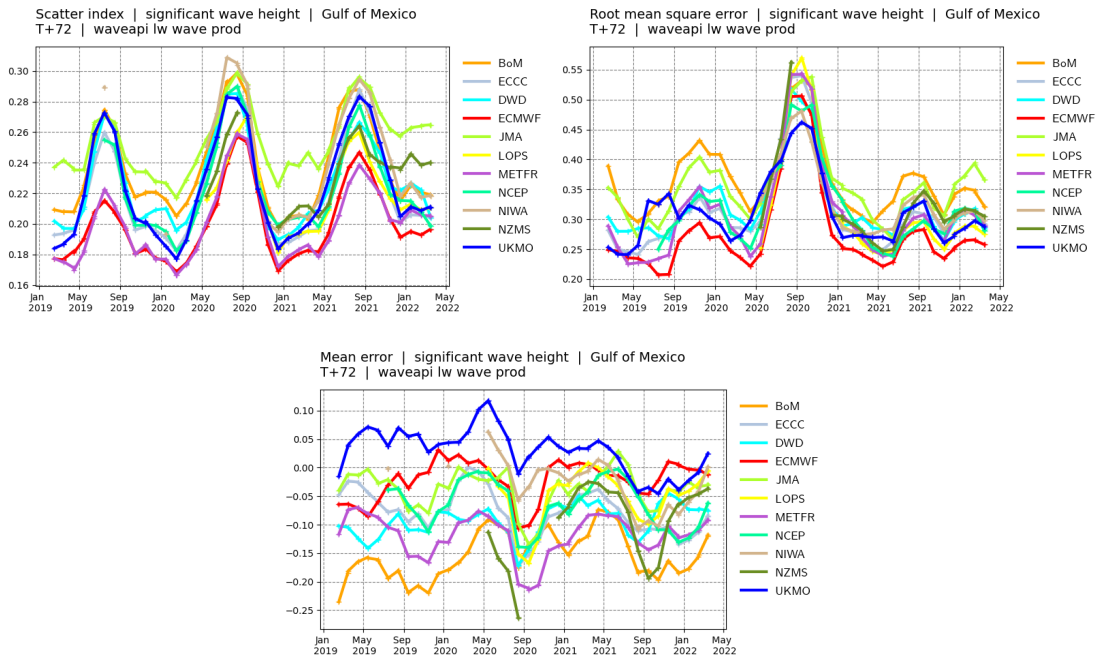
Mean error | significant wave height | Gulf of Mexico
20220301 00z to 20220530 12z | waveapi lw wave prod mean_fair



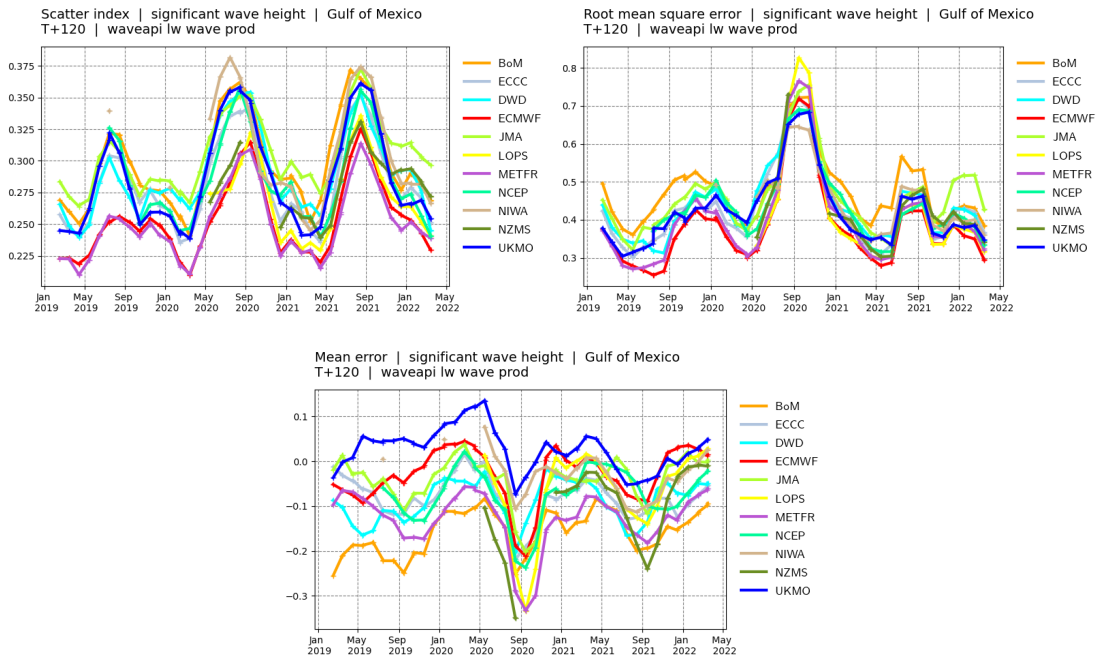
Gulf of Mexico. Top panel: observation distribution. Middle left panel: Forecast scatter index (standard deviation of the difference normalised by the mean of the observations). Middle right panel: Forecast root mean square error (RMSE). Bottom panel: forecast mean error (bias).



Gulf of Mexico. Scores time-series at **day 1**. Top left panel: Forecast scatter index (standard deviation of the difference normalised by the mean of the observations). Top right panel: Forecast root mean square error (RMSE). Bottom panel: forecast mean error (bias).

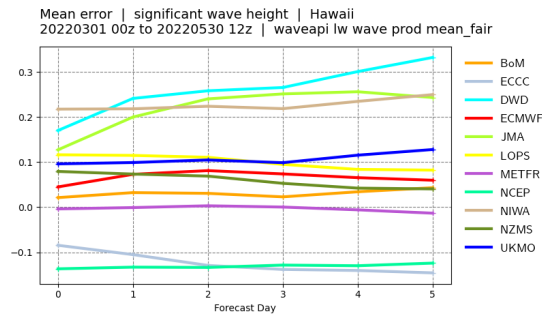
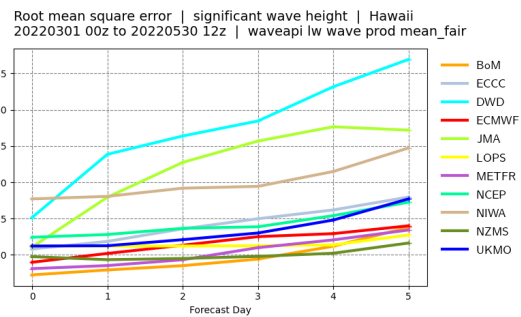
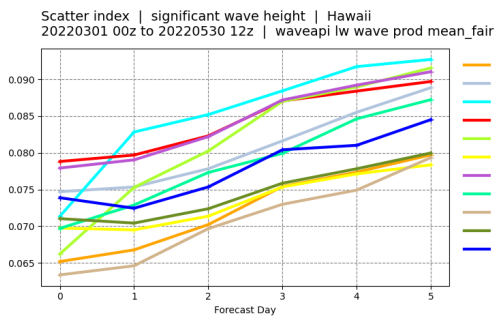
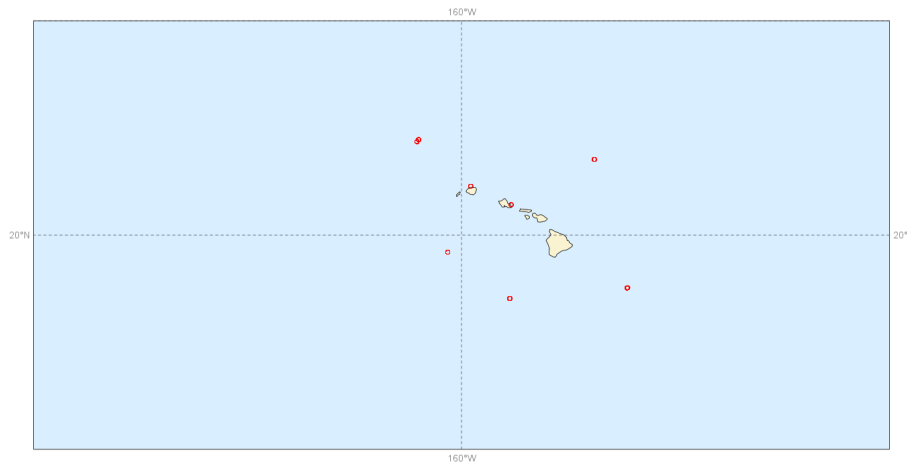


Gulf of Mexico. Scores time-series at **day 3**. Top left panel: Forecast scatter index (standard deviation of the difference normalised by the mean of the observations). Top right panel: Forecast root mean square error (RMSE). Bottom panel: forecast mean error (bias).

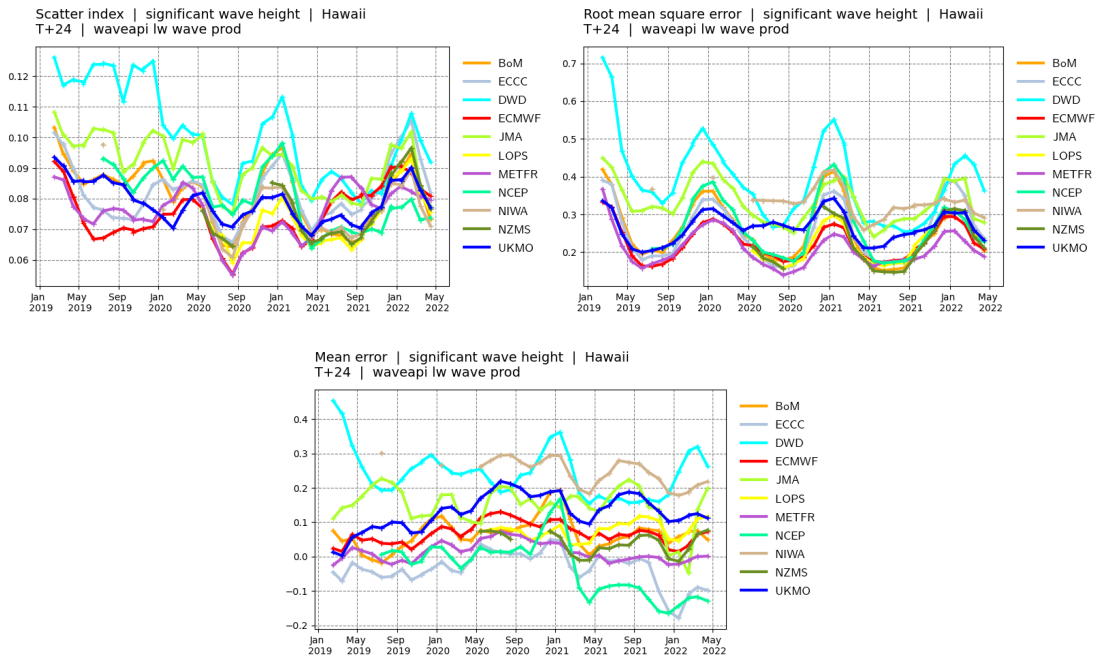


Gulf of Mexico. Scores time-series at **day 5**. Top left panel: Forecast scatter index (standard deviation of the difference normalised by the mean of the observations). Top right panel: Forecast root mean square error (RMSE). Bottom panel: forecast mean error (bias).

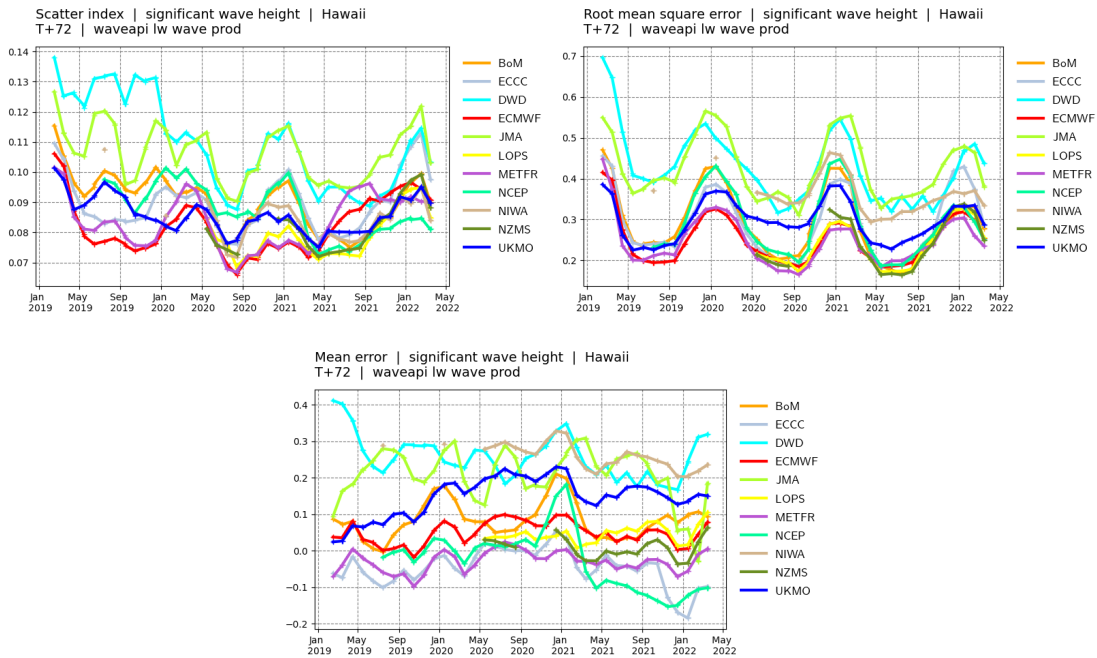
Buoys observations - from 20220301 to 20220530 - (swh)



Hawaii. Top panel: observation distribution. Middle left panel: Forecast scatter index (standard deviation of the difference normalised by the mean of the observations). Middle right panel: Forecast root mean square error (RMSE). Bottom panel: forecast mean error (bias).

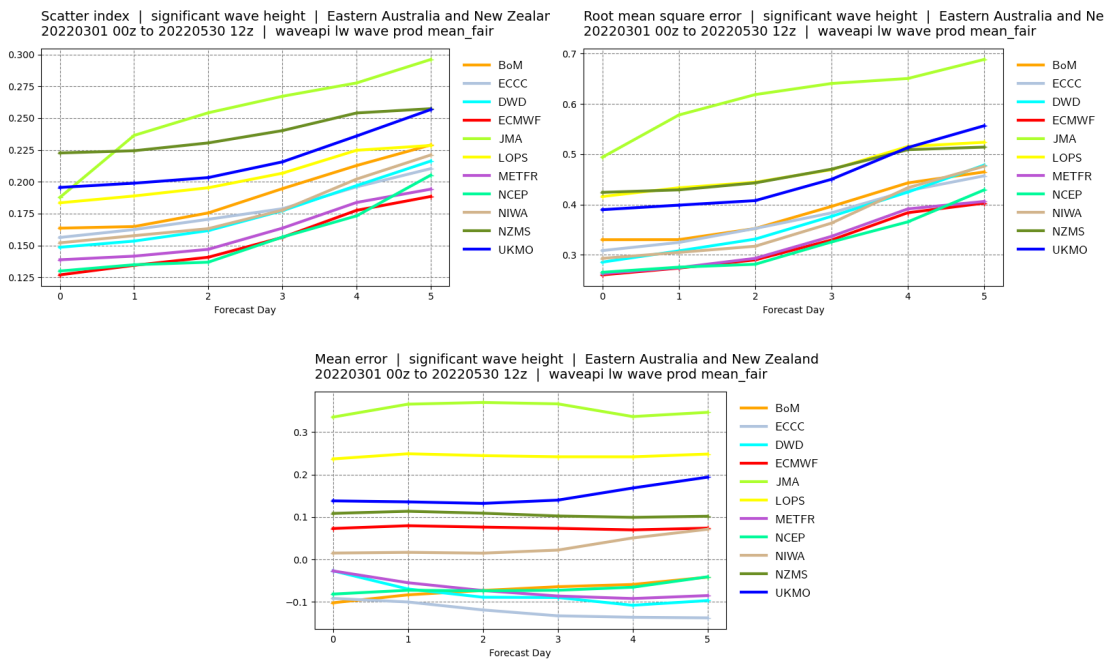
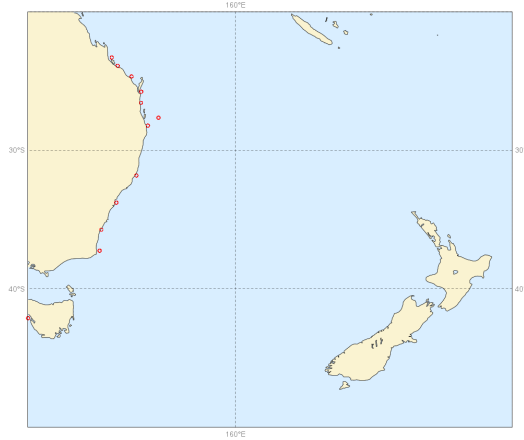


Hawaii. Scores time-series at **day 1**. Top left panel: Forecast scatter index (standard deviation of the difference normalised by the mean of the observations). Top right panel: Forecast root mean square error (RMSE). Bottom panel: forecast mean error (bias).

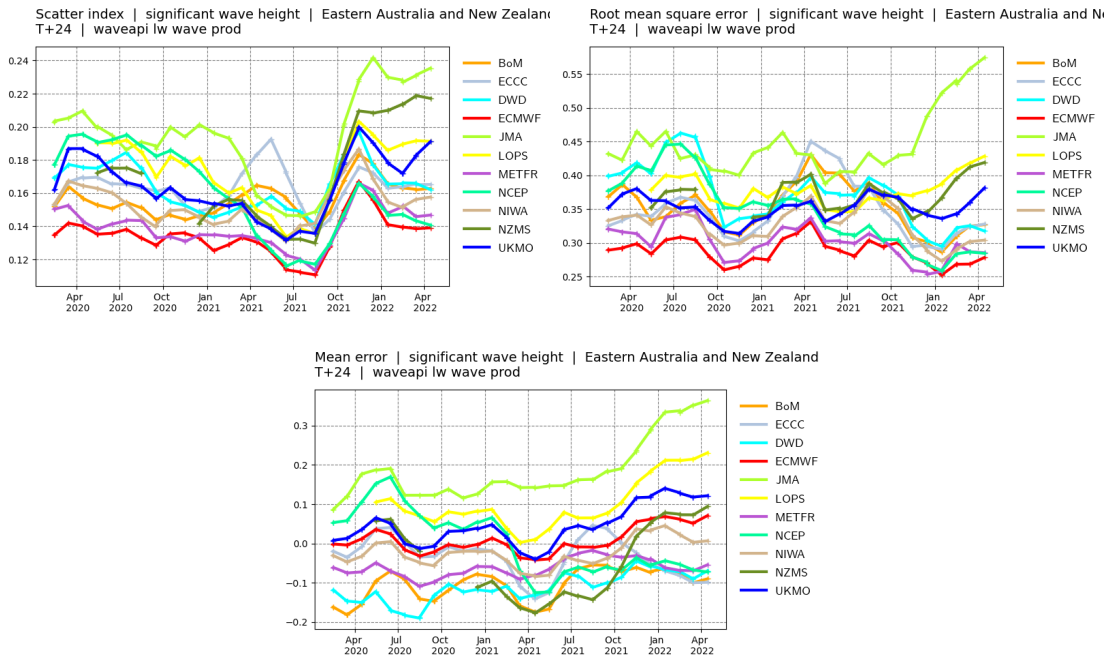


Hawaii. Scores time-series at **day 3**. Top left panel: Forecast scatter index (standard deviation of the difference normalised by the mean of the observations). Top right panel: Forecast root mean square error (RMSE). Bottom panel: forecast mean error (bias).

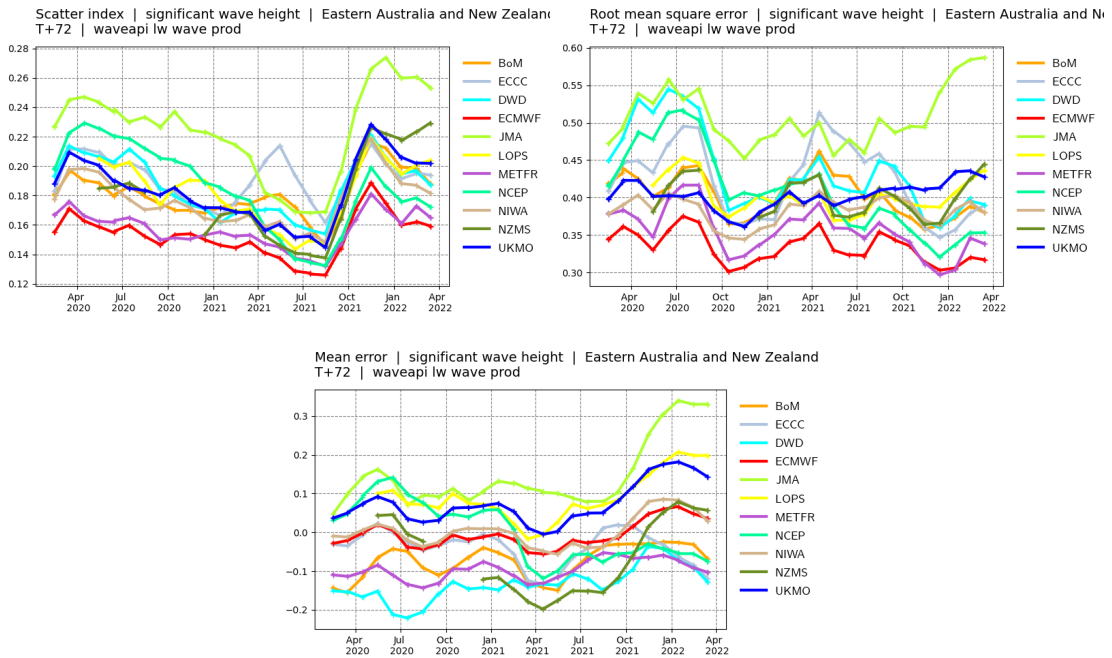
Buoys observations - from 20220301 to 20220530 - (swh)



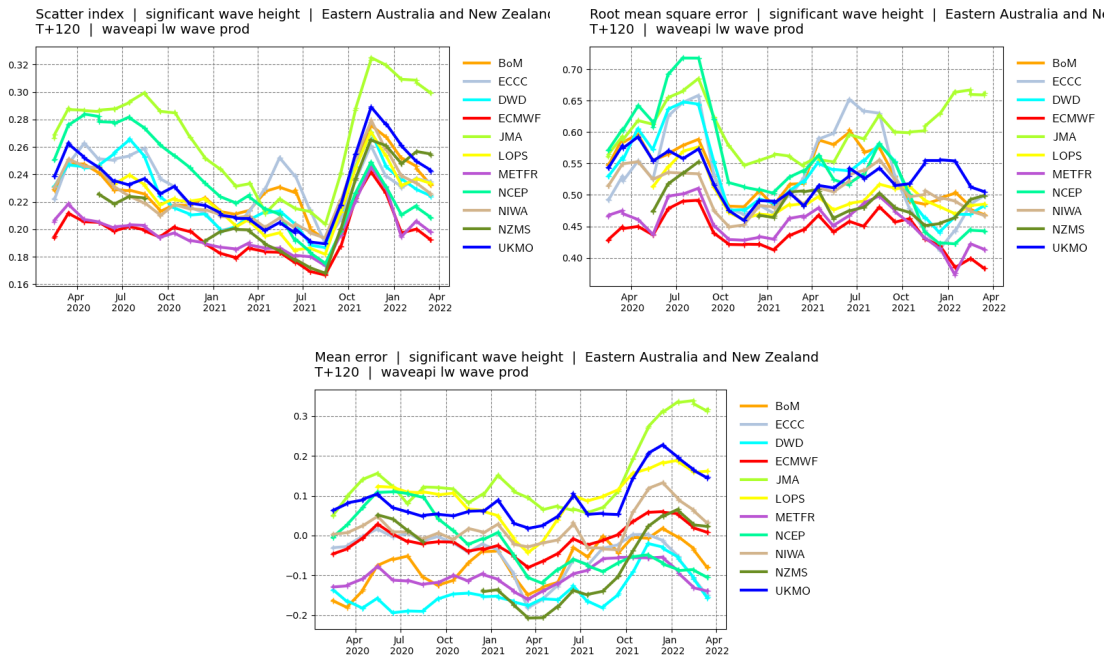
East Australia - New Zealand. Top panel: observation distribution. Middle left panel: Forecast scatter index (standard deviation of the difference normalised by the mean of the observations). Middle right panel: Forecast root mean square error (RMSE). Bottom panel: forecast mean error (bias).



East Australia - New Zealand. Scores time-series at **day 1**. Top left panel: Forecast scatter index (standard deviation of the difference normalised by the mean of the observations). Top right panel: Forecast root mean square error (RMSE). Bottom panel: forecast mean error (bias).

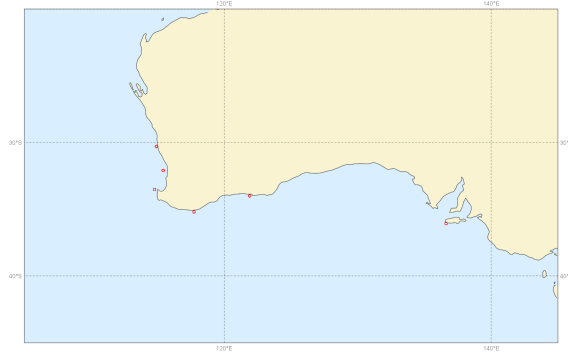


East Australia - New Zealand. Scores time-series at **day 3**. Top left panel: Forecast scatter index (standard deviation of the difference normalised by the mean of the observations). Top right panel: Forecast root mean square error (RMSE). Bottom panel: forecast mean error (bias).

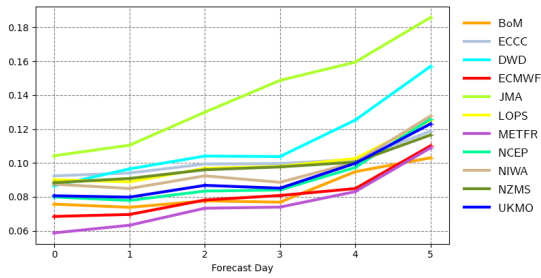


East Australia - New Zealand. Scores time-series at **day 5**. Top left panel: Forecast scatter index (standard deviation of the difference normalised by the mean of the observations). Top right panel: Forecast root mean square error (RMSE). Bottom panel: forecast mean error (bias).

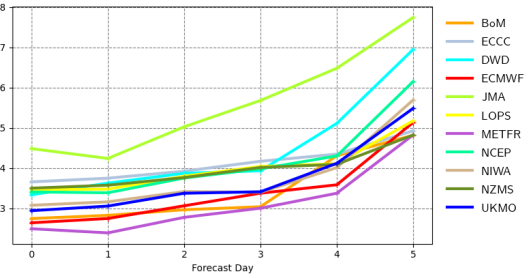
Buoys observations - from 20220301 to 20220530 - (swh)



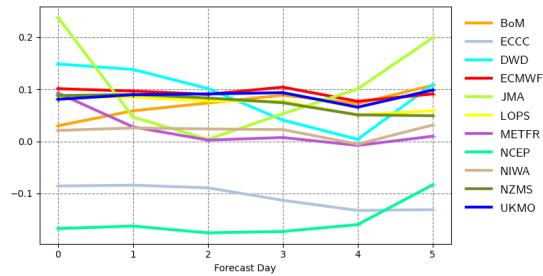
Scatter index | significant wave height | South Southwestern Australia
20220301 00z to 20220530 12z | waveapi lw wave prod mean_fair



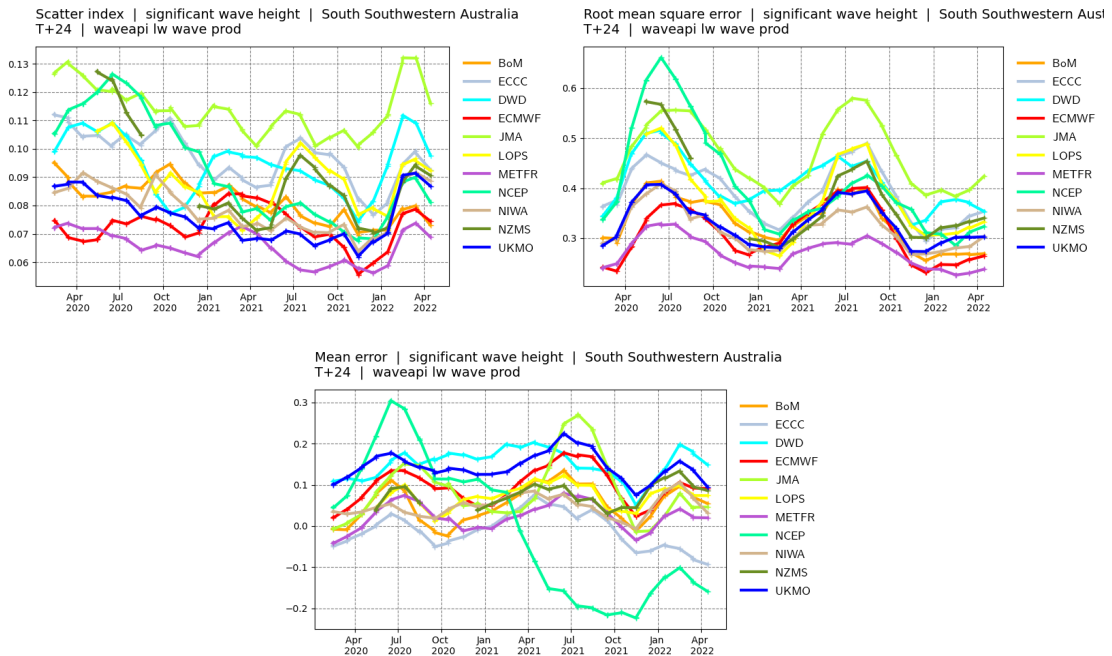
Root mean square error | significant wave height | South Southwestern Aus
20220301 00z to 20220530 12z | waveapi lw wave prod mean_fair



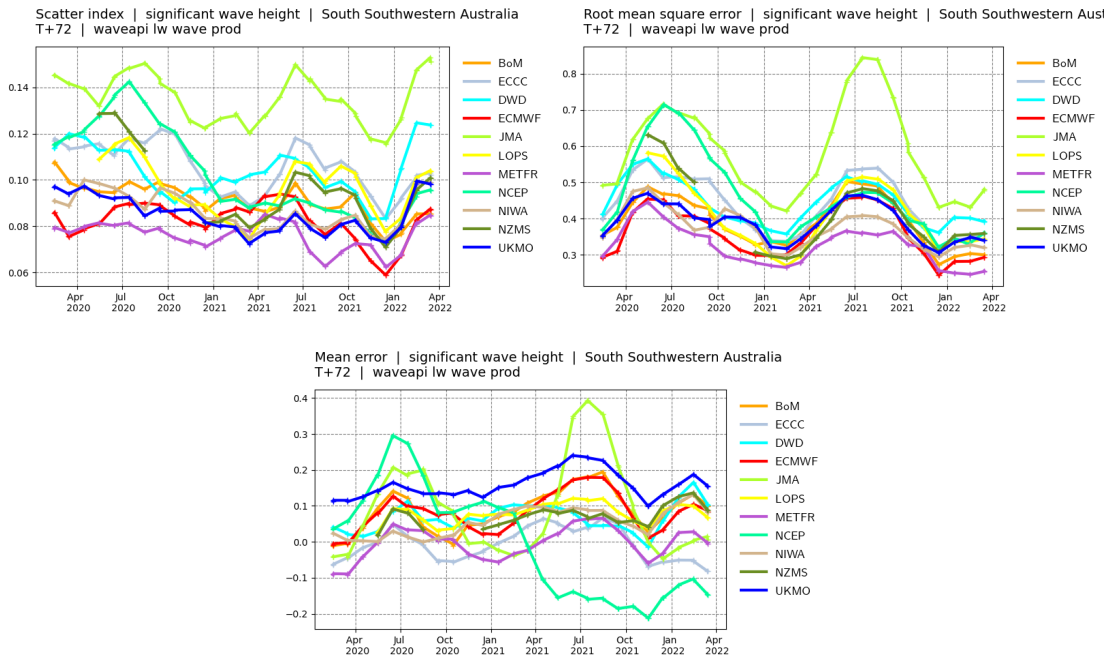
Mean error | significant wave height | South Southwestern Australia
20220301 00z to 20220530 12z | waveapi lw wave prod mean_fair



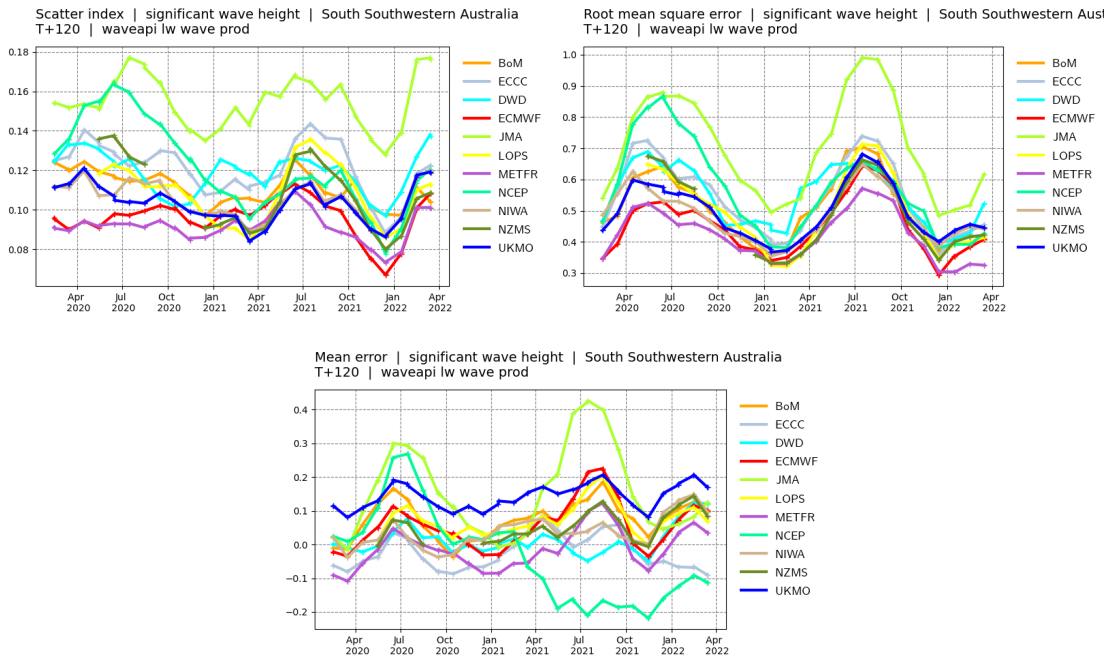
South South West Australia. Top panel: observation distribution. Middle left panel: Forecast scatter index (standard deviation of the difference normalised by the mean of the observations). Middle right panel: Forecast root mean square error (RMSE). Bottom panel: forecast mean error (bias).



South South West Australia. Scores time-series at **day 1**. Top left panel: Forecast scatter index (standard deviation of the difference normalised by the mean of the observations). Top right panel: Forecast root mean square error (RMSE). Bottom panel: forecast mean error (bias).



South South West Australia. Scores time-series at **day 3**. Top left panel: Forecast scatter index (standard deviation of the difference normalised by the mean of the observations). Top right panel: Forecast root mean square error (RMSE). Bottom panel: forecast mean error (bias).



South South West Australia. Scores time-series at **day 5**. Top left panel: Forecast scatter index (standard deviation of the difference normalised by the mean of the observations). Top right panel: Forecast root mean square error (RMSE). Bottom panel: forecast mean error (bias).